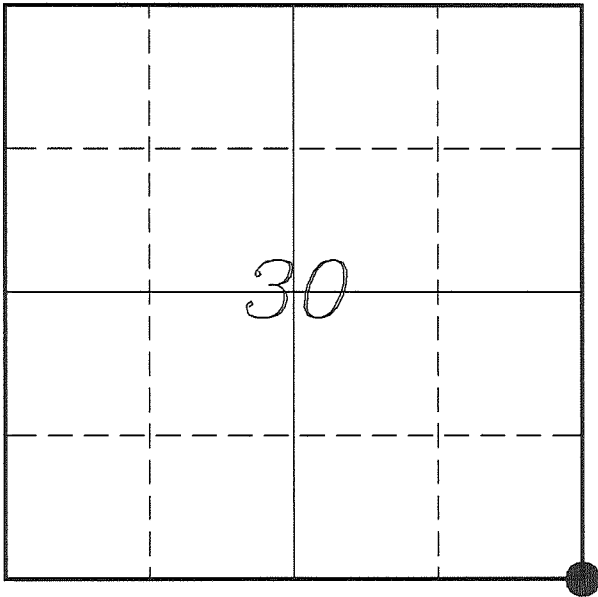


U. S. PUBLIC LAND SURVEY MONUMENT RECORD

**SECTION 30, T14N, R1E, TOWN OF HILLSBORO
VERNON COUNTY, WISCONSIN**



LOCATION OF LANDMARK

VERNON COUNTY COORDINATE SYSTEM	
Northing	184902.787
Easting	828211.230
Datum	NAD 1983 (2011)
Elevation	
Datum	
TYPE OF LANDMARK: Set Lunde Monument 4" Brass Capped Iron Pipe	
BEARINGS ARE REFERENCED TO: Vernon County Coordinates (Survey Grade)	

Witnesses: Larry Handschy
Al Hoff

Eagle Ridge Surveying
PO Box 213
Wilton, Wisconsin

Date: 19 July 2017

Describe any record evidence, monument evidence, testimonial evidence or any other material evidence you considered and whether the monument was found or restored through acceptance of an obliterated evidence location.

Found the 1" iron pipe as shown on Cornell's tie sheet and verified by his ties.

The location of the pipe is based on a long standing 3-way fence corner. Distances to other corners fit fairly well considering the terrain.

I accepted the location of the iron pipe as the best available evidence of the original government corner and replaced it with a Lunde Monument.

Describe or show any material discrepancy between the location of the restored corner and that of the corner previously restored or re-established.

John E Davidson established this corner in December 1852.

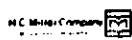
Wm Knower was at this corner, in January 1879, during a survey in Section 31. He does not indicate if he found or re-established the corner.

Terry Cornell was at this corner, in March 1997, during a survey in Sections 29 & 30. He shows he set a 1" iron pipe and prepared a tie sheet.

Richard Blakeslee was at this corner, in April 2007, during a survey in Section 32. he shows he found a 1" iron pipe.

Christopher Fechner was at this corner, in December 2015, during a survey in Sections 31 & 32. He shows that he found a county monument.

OCT 13 1997

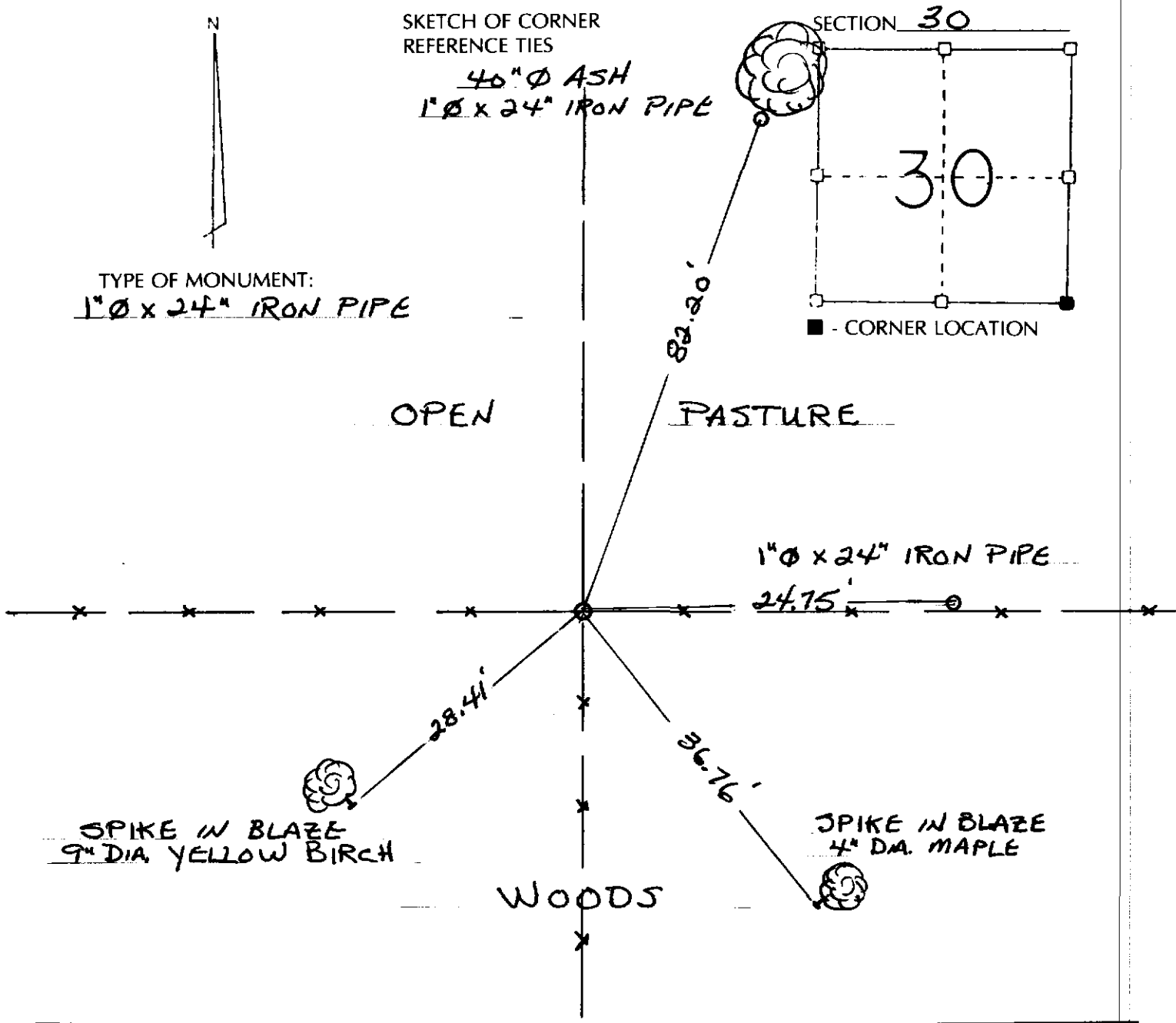


RECORD OF CORNER MONUMENTATION

Southeast CORNER SECTION 30 TOWNSHIP 14 N RANGE 1 EAST
VERNON COUNTY, WISCONSIN

STATE PLANE COORDINATES OF _____
(Y) NORTH _____ ELEVATION _____
(X) EAST _____

HORIZONTAL DATUM: WISCONSIN STATE PLANE COORDINATE SYSTEM, SOUTH ZONE



SURVEYOR'S CERTIFICATE
(STATE OF WISCONSIN)

I HEREBY CERTIFY THAT DURING THE PERFORMANCE OF A SURVEY FOR ALLAN WYNUEEN, MARCH 1997, WE DID LOCATE A "SPIKE AND WASHERS" AT THE EXISTING FENCE CORNER. WE REPLACED SAID SPIKE WITH A 1" DIAMETER x 24" IRON PIPE AND SET THE MONUMENT ABOVE FOR THE PERPETUATION OF SAID CORNER.

DATED THIS 10th DAY OF
October 1997

Terry L. Cornell
REGISTERED LAND SURVEYOR
S-1905

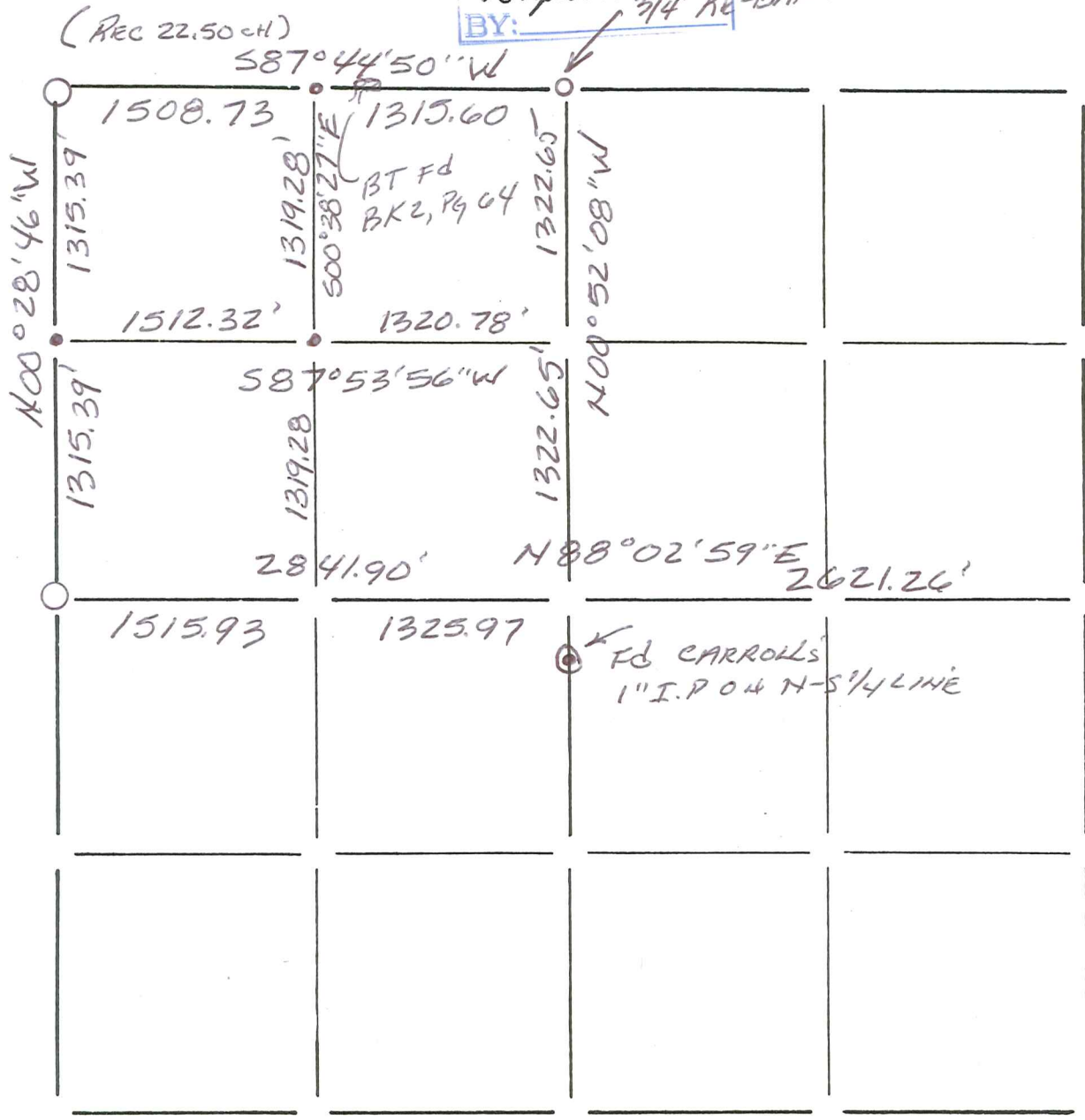


(46)

Section Summary and Index

RECEIVED
 AUG 14 2006
 S. Johnson
 BY: 3/4" RE-BAR FOR COR.

31 - 14N - 1E
 Section Town Range



LEGEND

- ⊕ - Harrison cast iron monument.
- - Stone or concrete monument.
- - Other VERNON Co. Mon.
- - 3/4" x 18" RE-BAR SET



Richard T. Blakeslee
 8-10-06