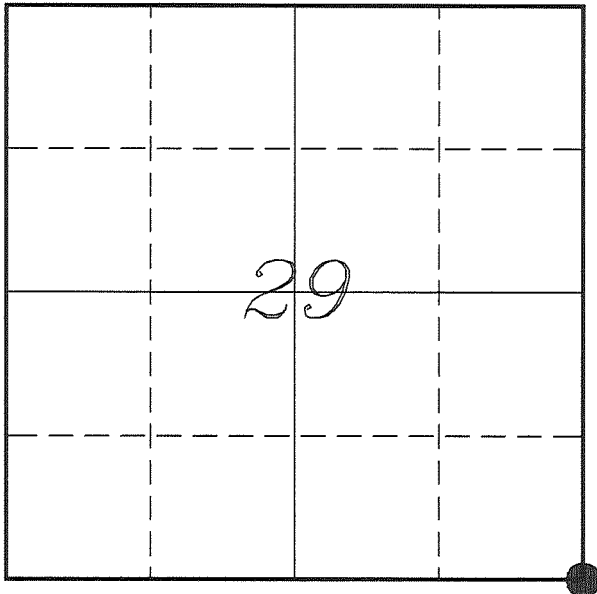


U. S. PUBLIC LAND SURVEY MONUMENT RECORD

**SECTION 29, T14N, R1E, TOWN OF HILLSBORO
VERNON COUNTY, WISCONSIN**



LOCATION OF LANDMARK

<i>VERNON COUNTY COORDINATE SYSTEM</i>	
<i>Northing</i>	<i>184947.719</i>
<i>Easting</i>	<i>833481.557</i>
<i>Datum</i>	<i>NAD 1983 (2011)</i>
<i>Elevation</i>	
<i>Datum</i>	
<i>TYPE OF LANDMARK:</i>	
<i>Set Lunde Monument</i>	
<i>4" Brass Capped</i>	
<i>Iron Pipe</i>	
<i>BEARINGS ARE REFERENCED TO:</i>	
<i>Vernon County Coordinates</i>	
<i>(Survey Grade)</i>	

Witnesses: Larry Handschy
Al Hoff

Eagle Ridge Surveying
PO Box 213
Wilton, Wisconsin

Date: 27 June 2017

Describe any record evidence, monument evidence, testimonial evidence or any other material evidence you considered and whether the monument was found or restored through acceptance of an obliterated evidence location.

Found the 1" iron pipe shown on Cornell's tie sheet. And verified by his ties.

The location of this pipe fits well with the government survey as well with Sterling's survey.

I accepted the location of the iron pipe as the best available evidence of the original government survey and replaced it with a Lunde Monument.

Describe or show any material discrepancy between the location of the restored corner and that of the corner previously restored or re-established.

John E Davidson established this corner in December 1852.

C M Sterling was at this corner, in March 1893, during a survey in Section 32. He shows this corner as a government corner.

Paul Chafer was at this corner, in October 1986, during a survey in Section 28. He shows he set a 1" iron pipe.

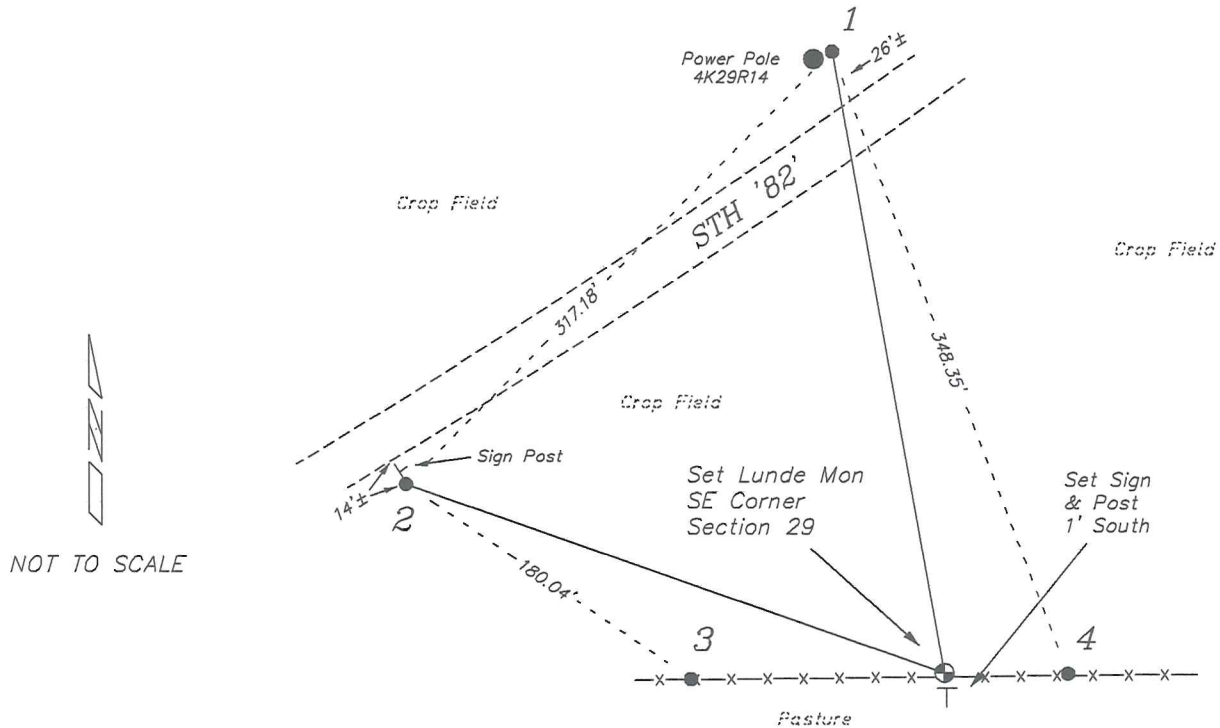
Terry Cornell was at this corner, in October 1997, during a survey in Section 29. He shows he set a 1" iron pipe and prepared a tie sheet.

This corner is shown on DOT Transportation Plat, Project No 5714-01-21, dated June 1998. No monument was labeled for this corner.

Patrick Carroll was at this corner, in August 2001 & August 2007, during surveys in Section 28. He shows he found a 1" iron pipe.

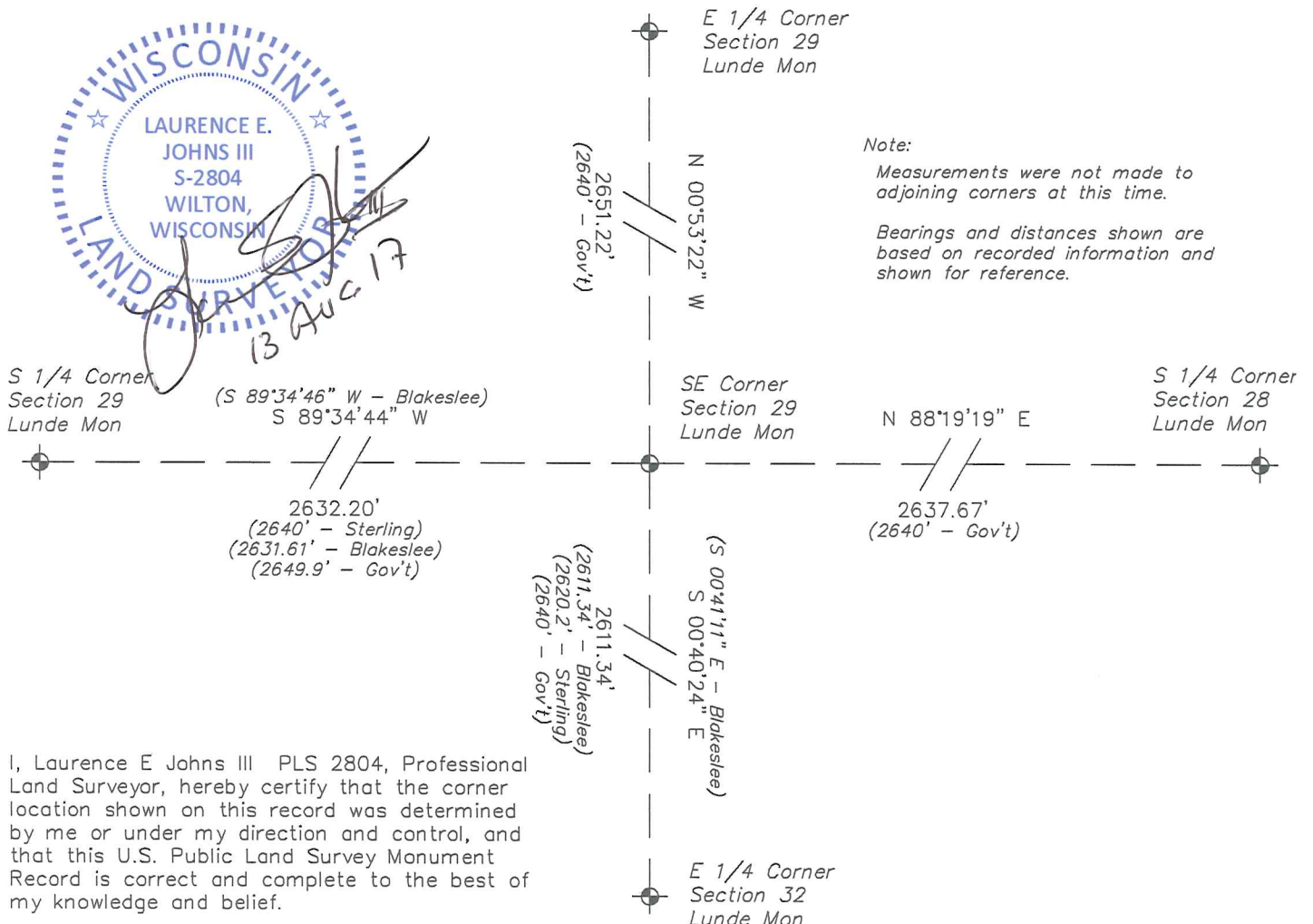
RECORD OF DURABLE WITNESS MONUMENTS

NO	DESCRIPTION	BEARING	DISTANCE
1	Set 3/4" x 18" Iron Rod 1' East of Power Pole #4K29R14	N 10°06'26" W	330.89'
2	Set 3/4" x 18" Iron Rod 1' South of Hwy 33/82 Sign Post	N 70°31'34" W	296.74'
3	Set 3/4" x 18" Iron Rod In Fence Line	S 88°29'58" W	131.72'
4	Set 3/4" x 18" Iron Rod In Fence Line	S 89°38'09" E	64.25'



PLAN VIEW DRAWING OF REFERENCE TIES

Map Showing Distance And Direction To Other Public Land Survey Corners Used For Re-Establishing The Corner



I, Laurence E Johns III PLS 2804, Professional Land Surveyor, hereby certify that the corner location shown on this record was determined by me or under my direction and control, and that this U.S. Public Land Survey Monument Record is correct and complete to the best of my knowledge and belief.

OCT 18 1997

FORM NO. 985-A

H. C. Miller Company

RECORD OF CORNER MONUMENTATION

Southeast CORNER SECTION 29 TOWNSHIP 14 N RANGE 1 EAST
VERNON COUNTY, WISCONSIN

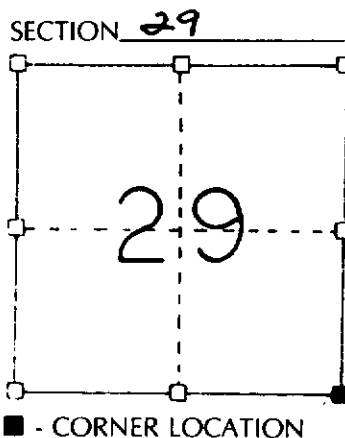
STATE PLANE COORDINATES OF _____
(Y) NORTH _____
(X) EAST _____

ELEVATION _____

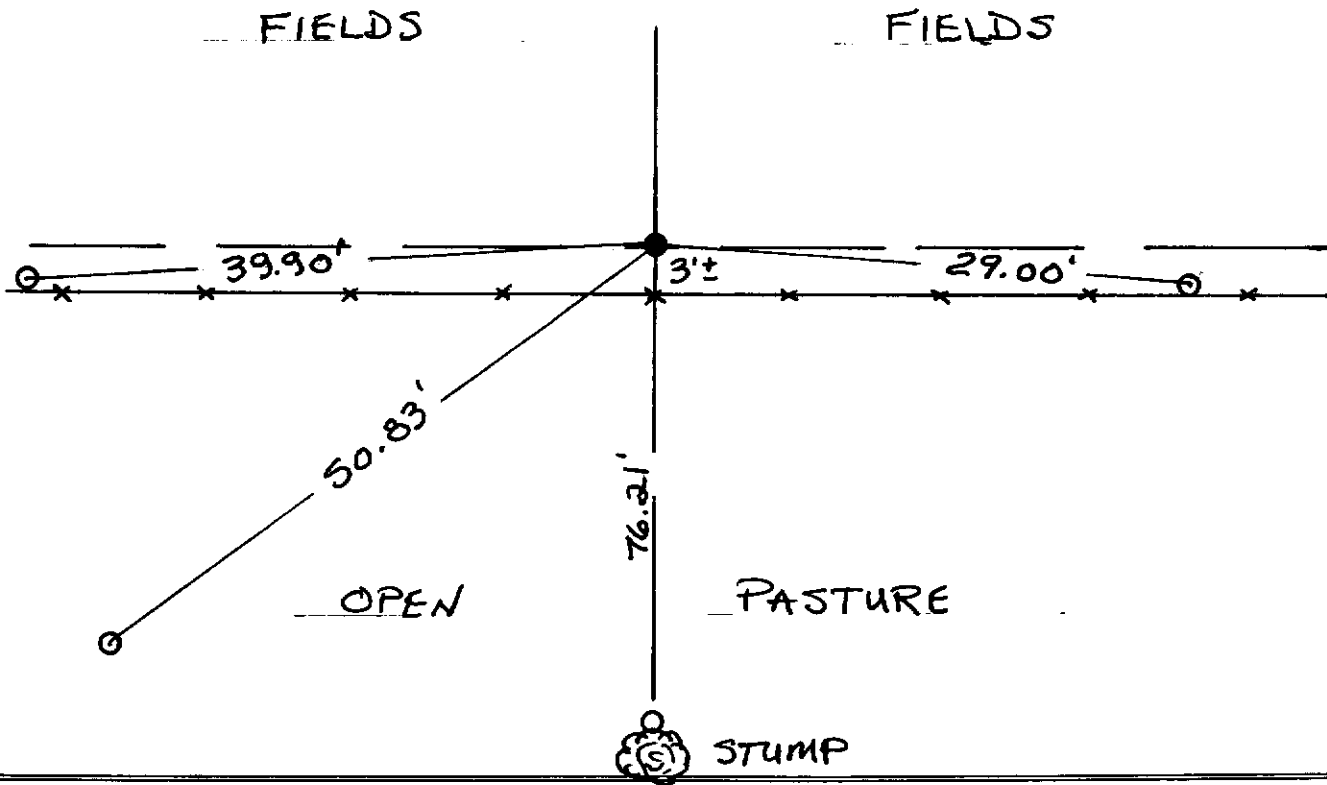
HORIZONTAL DATUM: WISCONSIN STATE PLANE COORDINATE SYSTEM, SOUTH ZONE



SKETCH OF CORNER REFERENCE TIES



TYPE OF MONUMENT:
1" Ø x 24" IRON PIPE

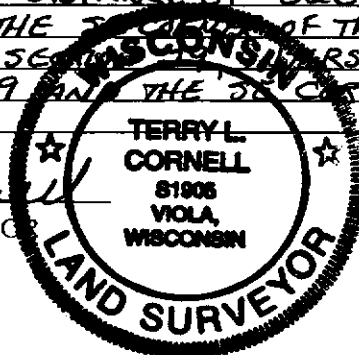


SURVEYOR'S CERTIFICATE (STATE OF WISCONSIN)

I HEREBY CERTIFY THAT A TRAVERSE PERFORMED DURING MARCH 1997, FOR ALLAN WYNNIGEN, INDICATED A DISTANCE TO THE SW CORNER OF SECTION 29 OF 5269.05 FEET COMPARED TO GOVERNMENT DISTANCE OF 5280 FEET. WE SET THIS CORNER ON LINE BETWEEN THE SW CORNER OF THE SW 1/4-SW 1/4 SECTION 28 AND THE SW CORNER OF SECTION 29 INTERSECTED BY A LINE FROM THE E 1/4 CORNER OF SECTION 29 AND THE SW CORNER OF THE NE 1/4-NE 1/4 SECTION 32.

DATED THIS 10th DAY OF
October 1997

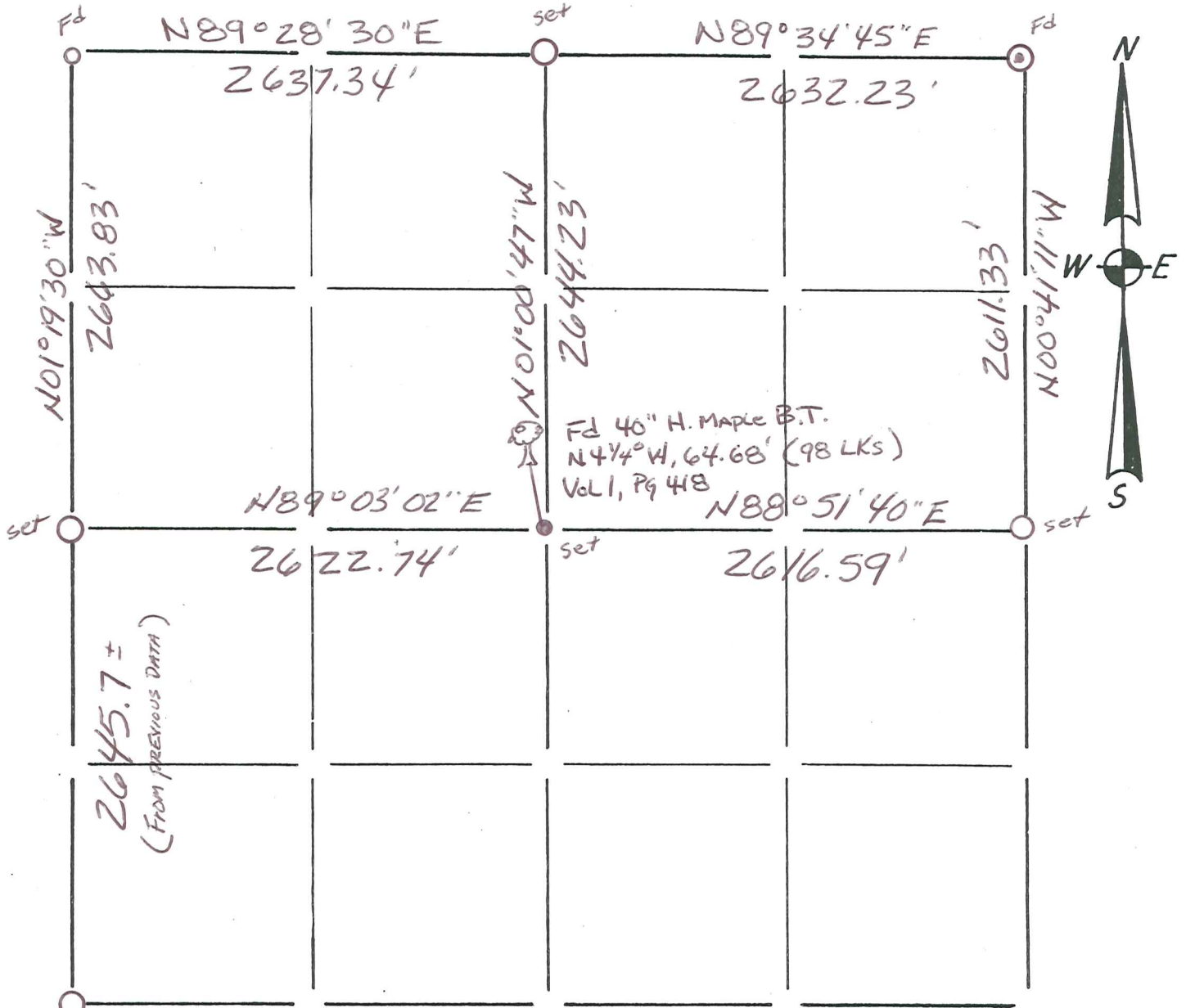
Terryl L. Cornell
REGISTERED LAND SURVEYOR
S-1905



43

Section Summary and Index

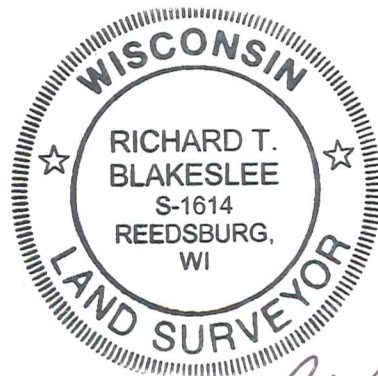
32 - 14N R1E
 Section Town Range



Fd (From original B.T.)

LEGEND

- ⊕ - Harrison cast iron monument.
- - Stone or concrete monument.
- - Other Vernon Co. Monument set
- - 1" I.P. Found.
- ⊙ - 1 1/4" I.P. Found
- - 3/4" x 18" RE-BAR Set



Richard T. Blakeslee
 4-4-07

SCANNED