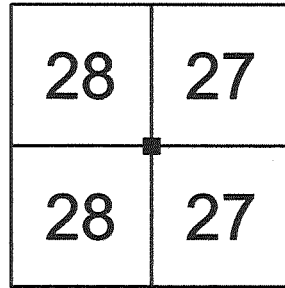


U.S. PUBLIC LAND SURVEY MONUMENT RECORD VERNON COUNTY, WISCONSIN.

IN ACCORDANCE WITH WISCONSIN ADMINISTRATIVE CODE, CHAPTER A-E 7.08 (3) (A) - (I)

LOCATION: (A) THE IDENTITY OF THE CORNER, AS REFERENCED TO THE U.S. PUBLIC LAND SURVEY SYSTEM.

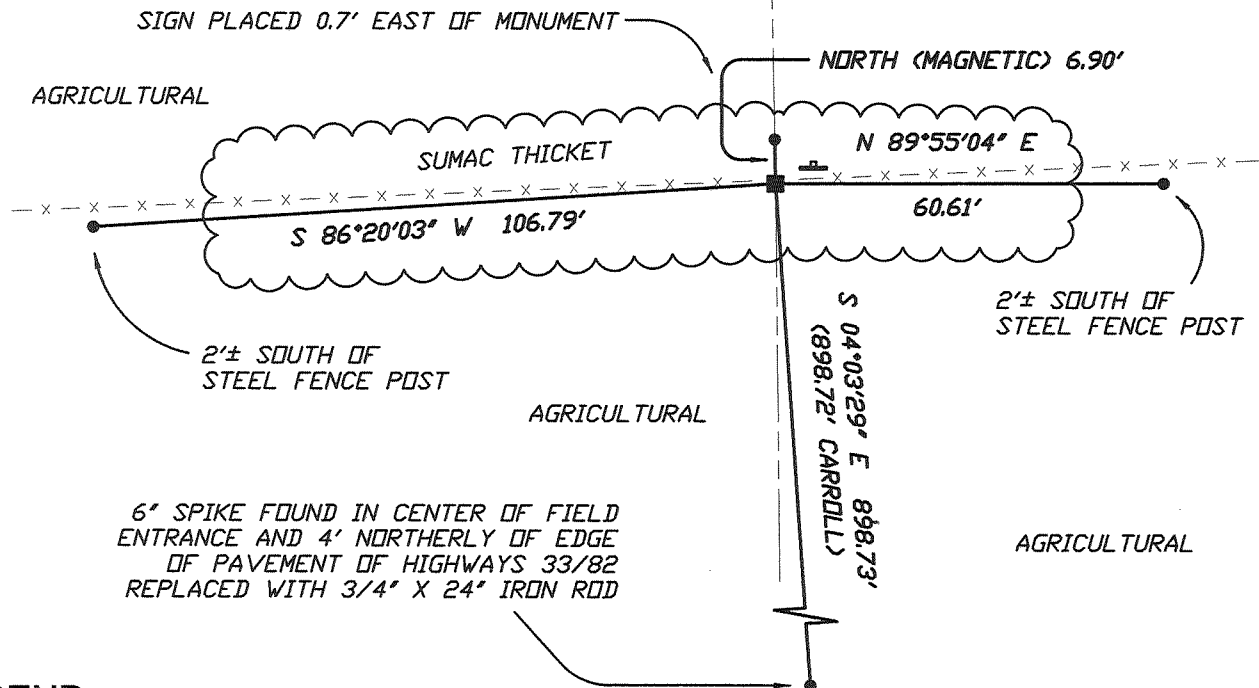
SECTION 27 - TOWN 14 N - RANGE 1 E
 TOWNSHIP OF HILLSBORO
 TYPE OF CORNER WEST ONE-QUARTER CORNER
 TYPE OF MONUMENT VERNON COUNTY LUNDE MONUMENT SET



PLAN VIEW: (C) REFERENCE TO AT LEAST 4 WITNESS MONUMENTS. WITNESS MONUMENTS SHALL BE CONCRETE, NATURAL STONE, IRON, BEARING TREES OR OTHER EQUALLY DURABLE MATERIAL, EXCEPT WOOD OTHER THAN BEARING TREES; (D) A PLAN VIEW DEPICTING THE RELEVANT MONUMENTS AND REFERENCE TIES WHICH ARE SUFFICIENT IN DETAIL TO ENABLE ACCURATE RELOCATION OF THE CORNER MONUMENT IF THE CORNER MONUMENT IS DISTURBED; (E) A DESCRIPTION OF ANY MATERIAL DISCREPANCY BETWEEN THE LOCATION OF THE CORNER AS RESTORED OR REESTABLISHED AND THE LOCATION OF THAT CORNER AS PREVIOUSLY RESTORED OR REESTABLISHED;

WEST 1/4 CORNER SECTION 27-T14N-R1E

CORNER MONUMENT IS A VERNON COUNTY LUNDE MONUMENT SET TO REPLACE AN EXISTING 7/8" X 36" IRON ROD FOUND.



LEGEND

- PUBLIC LAND SURVEYING SYSTEM CORNER MONUMENT DESCRIBED
- 0.75" x 24" RE-BAR PLACED AS REFERENCE MONUMENT
- EXISTING FERROUS PIPE FOUND (SIZE AS NOTED)
- EXISTING FERROUS ROD FOUND (SIZE AS NOTED)
- ⊥ COUNTY SURVEYOR WITNESS SIGN ON STEEL CHANNEL POST PLACED

SCALE: 1" = 30 FEET

** OTHER REFERENCES AND FEATURES ARE AS NOTED IN THE PLAN VIEW ABOVE

UNLESS NOTED, BEARINGS ARE GRID

SURVEYOR'S CERTIFICATE: CHAPTER 7.08 (3) (I)

THE UNDERSIGNED HEREBY CERTIFIES THAT THE U.S. PUBLIC LAND SURVEY MONUMENT RECORD SHOWN WAS DETERMINED BY THEM OR UNDER THEIR DIRECTION AND IS CORRECT TO THE BEST OF THEIR KNOWLEDGE AND BELIEF.



Matthew M. Filus

THE EXCELSIOR GROUP, LLC
 MATTHEW M FILUS, WISCONSIN REGISTERED LAND SURVEYOR S-2185

10/6/2011

DATE CERTIFIED

U.S. PUBLIC LAND SURVEY MONUMENT RECORD VERNON COUNTY, WISCONSIN.

IN ACCORDANCE WITH WISCONSIN ADMINISTRATIVE CODE, CHAPTER A-E 7.08 (3) (A) - (I)

RECOVERY PROCEDURES:

(B) A DESCRIPTION OF ANY RECORD EVIDENCE, MONUMENT EVIDENCE, OCCUPATIONAL EVIDENCE, TESTIMONIAL EVIDENCE OR ANY OTHER MATERIAL EVIDENCE CONSIDERED BY THE SURVEYOR, AND WHETHER THE MONUMENT WAS FOUND OR PLACED;

GOVERNMENT LAND OFFICE (GLO) ORIGINAL SURVEY
DECEMBER 1851 - JANUARY 1852, J.E. DAVIDSON, SURVEYOR

NORTH BETWEEN SECTIONS 27 & 28, VARIATION 8°40' E

40.00 SET QUARTER SECTION POST
BURR OAK 10, N 67° E, 20 LINKS (13.20')
BURR OAK 16, S 61° W, 10 LINKS (6.60')

CARROLL LAND SURVEYING, PATRICK A CARROLL, SURVEYOR

5/01/2002 - PLSS MONUMENT RECORD INDICATE A 7/8" X 26" IRON ROD SET AT THE REMNANTS OF AN OLD WOOD FENCE POST AND LOOPS OF BARBED-WIRE AT THE LOCATION OF A MICHAEL MCMILLIN LAND TIE.

THE EXCELSIOR GROUP, LLC, AUGUST, 2011, MATTHEW M FILUS, SURVEYOR

I HAVE FOUND NO EVIDENCE OR ACCESSORIES OF THE ORIGINAL GLO CORNER. IT APPEARS AS THOUGH THE AREA HAS BEEN FARMED EXTENSIVELY, AS IT IS CURRENTLY COMPLETELY CLEARED AND CROPPED.

I HAVE FOUND A 7/8" X 36" LONG IRON ROD OF RECORD AS WELL AS THE REFERENCE TIES AS SHOWN ON SHEET 1. I HAVE VERIFIED IT'S POSITION AS CORRECT BY EXISTING MONUMENTATION ALONG THE WEST LINE OF SECTION 27 AND WITNESSED AS SHOWN ON SHEET 1 AND POSITIONED AS SHOWN ON SHEETS 4 AND 5 OF THIS DOCUMENT.

(E) A DESCRIPTION OF ANY MATERIAL DISCREPANCY BETWEEN THE LOCATION OF THE CORNER AS RESTORED OR REESTABLISHED AND THE LOCATION OF THAT CORNER AS PREVIOUSLY RESTORED OR REESTABLISHED;

NONE

(F) WHETHER THE CORNER WAS RESTORED THROUGH ACCEPTANCE OF AN OBLITERATED EVIDENCE LOCATION OR A FOUND PERPETUATED LOCATION;

A FOUND PERPETUATED LOCATION

(G) WHETHER THE CORNER WAS REESTABLISHED THROUGH LOST-CORNER PROPORTIONATE METHODS;

NO

SURVEYOR'S CERTIFICATE: CHAPTER 7.08 (3) (I)

THE UNDERSIGNED HEREBY CERTIFIES THAT THE U.S. PUBLIC LAND SURVEY MONUMENT RECORD SHOWN WAS DETERMINED BY THEM OR UNDER THEIR DIRECTION AND IS CORRECT TO THE BEST OF THEIR KNOWLEDGE AND BELIEF.



THE EXCELSIOR GROUP, LLC
MATTHEW M FILUS, WISCONSIN REGISTERED LAND SURVEYOR S-2185

10/6/2011

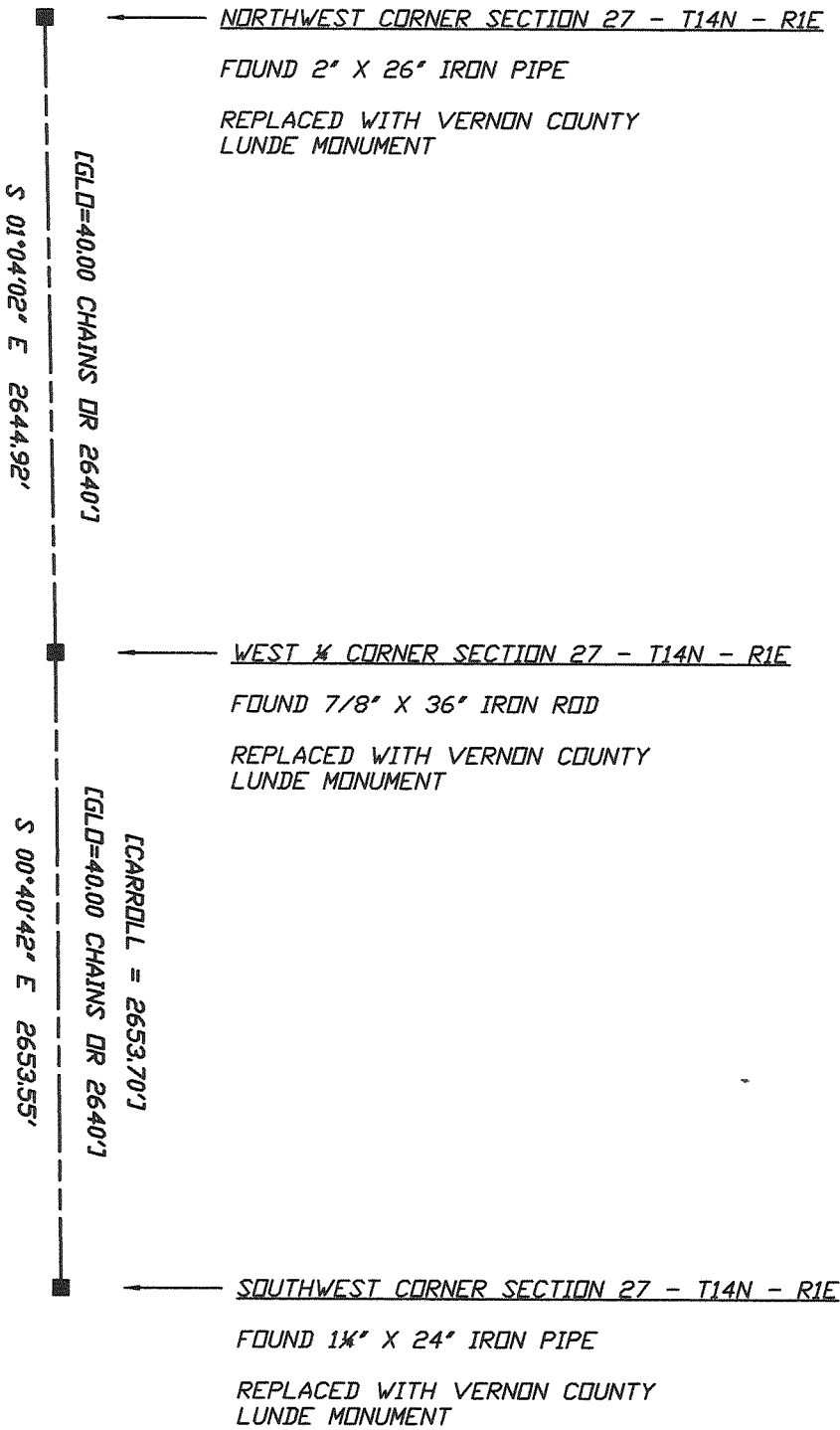
DATE CERTIFIED

U.S. PUBLIC LAND SURVEY MONUMENT RECORD VERNON COUNTY, WISCONSIN.

IN ACCORDANCE WITH WISCONSIN ADMINISTRATIVE CODE, CHAPTER A-E 7.08 (3) (A) - (I)

ADJACENT PLSS CORNER LOCATIONS:

(H) THE DIRECTIONS AND DISTANCES TO OTHER PUBLIC LAND SURVEY CORNERS WHICH WERE USED AS EVIDENCE OR USED FOR PROPORTIONING IN DETERMINING THE CORNER LOCATION;



NOT TO SCALE
UNLESS NOTED, BEARINGS ARE GRID

SURVEYOR'S CERTIFICATE: CHAPTER 7.08 (3) (I)

THE UNDERSIGNED HEREBY CERTIFIES THAT THE U.S. PUBLIC LAND SURVEY MONUMENT RECORD SHOWN WAS DETERMINED BY THEM OR UNDER THEIR DIRECTION AND IS CORRECT TO THE BEST OF THEIR KNOWLEDGE AND BELIEF.



[Handwritten Signature]

10/6/2011

THE EXCELSIOR GROUP, LLC
MATTHEW M FILUS, WISCONSIN REGISTERED LAND SURVEYOR S-2185

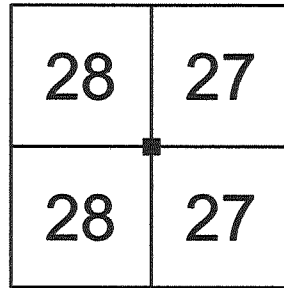
DATE CERTIFIED

VERNON COUNTY COORDINATE FORM

"AS AN ADDENDUM TO"
A CERTIFIED U.S. PUBLIC LAND SURVEY MONUMENT RECORD

LOCATION: (A) THE IDENTITY OF THE CORNER, AS REFERENCED TO THE U.S. PUBLIC LAND SURVEY SYSTEM.

SECTION 27 - TOWN 14 N - RANGE 1 E
 TOWNSHIP OF HILLSBORO
 TYPE OF CORNER WEST ONE-QUARTER CORNER
 TYPE OF MONUMENT VERNON COUNTY LUNDE MONUMENT SET



COORDINATES: (B)

GEOGRAPHIC (DEGREES, MINUTES AND DECIMAL SECONDS TO 4 PLACES)

LATITUDE 43° 39' 41.65103" N
 LONGITUDE 90° 22' 20.84309" W
 ELLIPSOID HT (M) N/A
 HORIZONTAL DATUM WISCRS - VERNON COUNTY - NAD83 (2007)
 ORTHOMETRIC HT (US FT) N/A
 VERTICAL DATUM N/A

| VERNON COUNTY COORDINATES (US FT) | COORDINATE QUALITY |
|-----------------------------------|--------------------|
| NORTHING <u>187,758.889</u> | <u>± 0.05'</u> |
| EASTING <u>838,736.238</u> | <u>± 0.05'</u> |

METHOD USED TO COMPUTE COORDINATES (CHECK AND COMPLETE AS APPLICABLE)

RTK OBSERVATIONS STATIC BASELINES OPUS SOLUTION (ATTACH COPY OF OPUS REPORT)
 COMBINATION OF CONVENTIONAL PROCEDURES WITH GPS OBSERVATIONS TO SET TEMPORARY CONTROL
 WAS A LEAST SQUARES ADJUSTMENT USED TO COMPUTE COORDINATES?

FOR NON-OPUS SOLUTIONS, LIST THE CONTROL STATIONS USED FOR COORDINATE COMPUTATIONS (A MINIMUM OF 2 DIFFERENT CONTROL STATIONS OR 2 DIFFERENT TIME COMBINATIONS FROM THE SAME CONTROL STATION ARE REQUIRED):

WHEN A DIRECT OBSERVATION OF THE CORNER IS NOT POSSIBLE, AND A COMBINATION OF DIFFERENT GPS AND/OR CONVENTIONAL PROCEDURES MUST BE USED TO DETERMINE COORDINATE VALUES, PROVIDE A BRIEF DESCRIPTION OF YOUR PROCEDURES ON THE BACK OF THIS FORM.

** THIS CORNER MONUMENT WAS POSITIONED THROUGH A NETWORK OF BOTH GPS AND CONVENTIONAL OBSERVATIONS REFER TO SHEET 5 OF 5 FOR THE CONSTRAINED CONTROL STATIONS, OBSERVATION TIMES AND ADJUSTMENT RESULTS

REASON FOR SUBMITTAL: (C) (CHECK ONE)

BEING FILED WITH A NEW US PLSS MONUMENT RECORD
 TO CORRECT THE COORDINATES LISTED ON A PREVIOUSLY FILED PLSS MONUMENT RECORD
 TO PROVIDE COORDINATES FOR A PREVIOUSLY FILED PLSS MONUMENT RECORD WITHOUT COORDINATES
 TO PROVIDE SUPPLEMENTAL COORDINATES FOR A PREVIOUSLY FILED PLSS MONUMENT RECORD

RLS AND DATE OF PLSS MONUMENT RECORD _____

SURVEYOR'S CERTIFICATE: (D) AGENT(S) PERFORMING GPS OBSERVATION & COORDINATE COMPUTATION

I, MATTHEW M FILUS, WISCONSIN REGISTERED LAND SURVEYOR NUMBER 2185, HEREBY CERTIFY THAT THE COORDINATES PROVIDED ON THIS RECORD WERE DETERMINED BY ME OR UNDER MY DIRECTION AND CONTROL AND THAT THIS COORDINATE SUBMISSION FORM IS CORRECT AND COMPLETE TO THE BEST OF MY KNOWLEDGE AND BELIEF.



Matthew M. Filus
 THE EXCELSIOR GROUP, LLC

10/6/2011

MATTHEW M FILUS, WISCONSIN REGISTERED LAND SURVEYOR S-2185 DATE CERTIFIED

VERNON COUNTY COORDINATE FORM

"AS AN ADDENDUM TO"
A CERTIFIED U.S. PUBLIC LAND SURVEY MONUMENT RECORD

CONTROL STATIONS, OBSERVATION TIMES & ADJUSTMENT RESULTS:

HORIZONTAL ADJUSTMENT REPORT

Unadjusted Observations

Control Coordinates:

| Sta. | N: | E: | StErr N: | StErr E: | |
|-----------|------------|------------|----------|----------|--------------------------------------|
| 22 | 187758.889 | 838736.238 | 0.050 | 0.050 | RESECTION REPORT BELOW |
| 1018 | 187738.842 | 838712.921 | 0.033 | 0.028 | GPS OBSERVATION 9/8/2011 13:01-13:18 |
| 1019 | 187740.156 | 838737.308 | 0.033 | 0.028 | GPS OBSERVATION 9/8/2011 12:43-13:00 |
| 1020 | 187738.031 | 838758.685 | 0.033 | 0.028 | GPS OBSERVATION 9/8/2011 13:19-13:36 |
| DILLY | 182094.130 | 817853.323 | 0.000 | 0.000 | |
| GREENWOOD | 180380.777 | 842706.521 | 0.000 | 0.000 | |
| HILLS | 195721.217 | 837995.861 | 0.000 | 0.000 | |
| WONEWOC | 194112.130 | 861156.707 | 0.000 | 0.000 | |

Resection Report

Reference Points

| Northing | Easting |
|------------|------------|
| 187738.842 | 838712.921 |
| 187740.156 | 838737.308 |
| 187738.031 | 838758.685 |

Measurements

| Distance |
|----------|
| 30.770 |
| 18.750 |
| 30.660 |

Residuals

| Northing | Easting |
|------------------------------|---------|
| 0.012 | 0.037 |
| 0.016 | 0.039 |
| 0.028 | 0.002 |
| Avg Easting Residual: 0.026 | |
| Avg Northing Residual: 0.019 | |

Calculated Resection Point

| Northing | Easting |
|------------|------------|
| 187758.889 | 838736.238 |

Relative 1:20,00 Error and Specification Tolerances

| Sta. | Sta. | Dist. | Actual Semi Major | Allowable Semi Major | Ratio Actual/Allowable | Semi Minor | Max. Err. Az. |
|------|-----------|----------|----------------------|-------------------------|---------------------------|------------|---------------|
| 22 | DILLY | 21637.60 | 0.05 | 1.08 | 0.05 | 0.04 | N 41-42'43"E |
| 22 | GREENWOOD | 8378.53 | 0.05 | 0.42 | 0.12 | 0.04 | N 41-42'43"E |
| 22 | HILLS | 7996.68 | 0.05 | 0.40 | 0.13 | 0.04 | N 41-42'43"E |
| 22 | WONEWOC | 23303.24 | 0.05 | 1.17 | 0.04 | 0.04 | N 41-42'43"E |

SURVEYOR'S CERTIFICATE: (D) AGENT(S) PERFORMING GPS OBSERVATION & COORDINATE COMPUTATION

I, MATTHEW M FILUS, WISCONSIN REGISTERED LAND SURVEYOR NUMBER 2185, HEREBY CERTIFY THAT THE COORDINATES PROVIDED ON THIS RECORD WERE DETERMINED BY ME OR UNDER MY DIRECTION AND CONTROL AND THAT THIS COORDINATE SUBMISSION FORM IS CORRECT AND COMPLETE TO THE BEST OF MY KNOWLEDGE AND BELIEF.



Matthew M. Filus
THE EXCELSIOR GROUP, LLC

10/16/2011

MATTHEW M FILUS, WISCONSIN REGISTERED LAND SURVEYOR S-2185

DATE CERTIFIED

RECEIVED

JUN 6 2002

BY: m.m

VERNON COUNTY CERTIFIED U.S. PUBLIC LAND SURVEY MONUMENT RECORD

INSTRUCTIONS: THIS RECORD SHALL SHOW THE LOCATION OF THE CORNER AND SHALL INCLUDE ALL OF THE FOLLOWING ELEMENTS (A-I)

(A) IDENTIFY THE CORNER BY REFERENCE TO THE U.S. PUBLIC LAND SURVEY SYSTEM

■ = CORNER MONUMENT RESTORED

WITNESSES TO CORNER LOCATION:

- 1) JAMES CARROLL
- 2) DAN CARROLL
- 3) TIM CARROLL

STATE PLANE COORDINATES (WISCONSIN SOUTH ZONE)

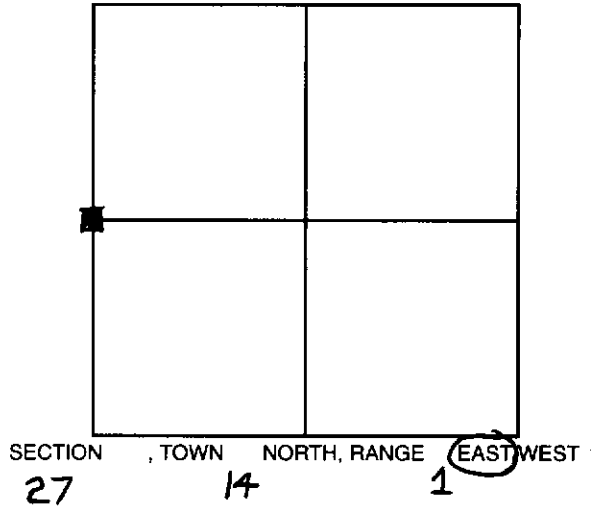
NORTHING:

EASTING:

VERNON COUNTY COORDINATES

NORTHING:

EASTING:

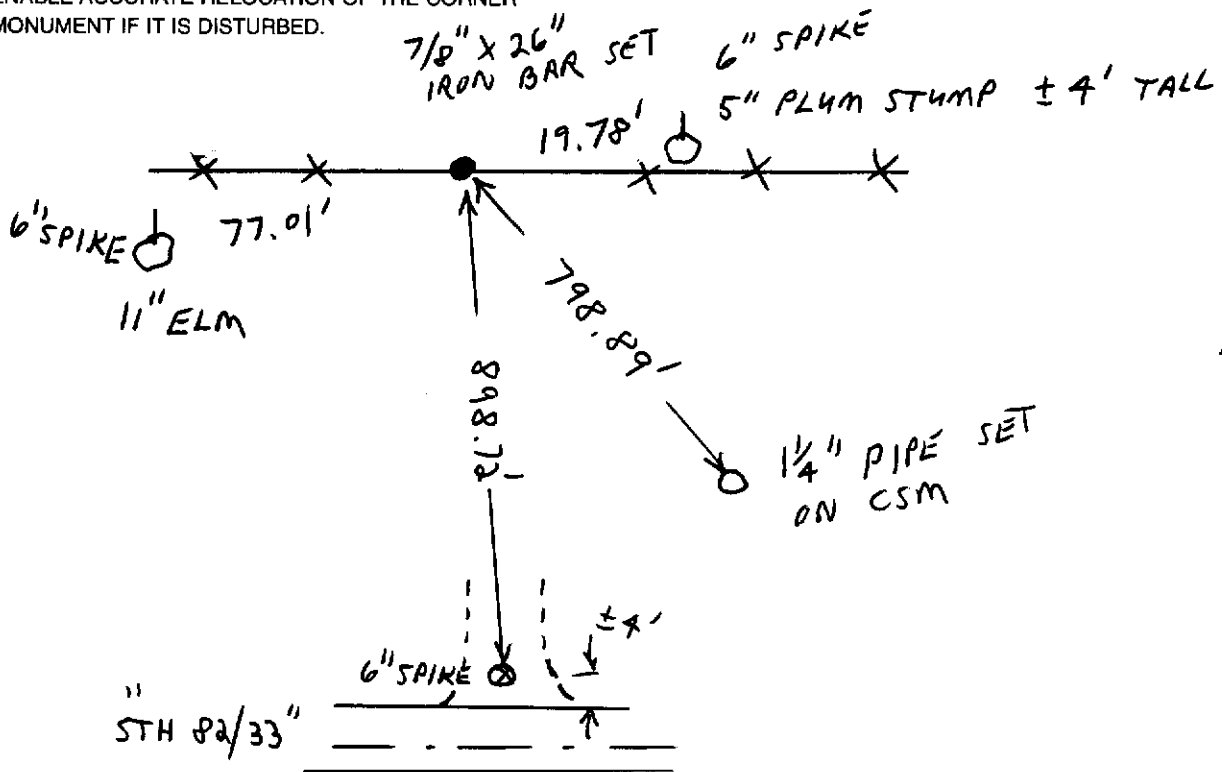


(B) DESCRIBE ANY RECORD EVIDENCE, MONUMENT EVIDENCE, OCCUPATIONAL EVIDENCE, TESTIMONIAL EVIDENCE OR ANY OTHER MATERIAL EVIDENCE YOU CONSIDERED, AND WHETHER THE MONUMENT WAS FOUND OR PLACED.

Per Plat of Survey on file by Surveyor McMillin, we retraced his survey to find remnants of old post & wire fence loops to reestablish the W 1/4 corner at this location.

(C) IN THE PLAN VIEW DRAWING BELOW, PROVIDE REFERENCE TIES TO AT LEAST 4 WITNESS MONUMENTS OR, IF THE LOCATION IS WITHIN A MUNICIPALITY, TO AT LEAST 2 WITNESS MONUMENTS. (WITNESS MONUMENTS SHALL BE MADE OF CONCRETE, NATURAL STONE, IRON, OR OTHER EQUALLY DURABLE MATERIAL.) DESCRIBE WITNESS MONUMENTS.

(D) SHOW A PLAN VIEW DRAWING, DEPICTING THE RELEVANT MONUMENTS AND REFERENCE TIES, WHICH IS SUFFICIENTLY DETAILED TO ENABLE ACCURATE RELOCATION OF THE CORNER MONUMENT IF IT IS DISTURBED.



(E) DESCRIBE ANY MATERIAL DISCREPANCY BETWEEN THE LOCATION OF THE CORNER AS RESTORED OR REESTABLISHED AND THE LOCATION OF THAT CORNER AS PREVIOUSLY RESTORED OR REESTABLISHED BY DISTANCE AND DIRECTION. SHOW THE DISCREPANCY ON THE PLAN VIEW DRAWING UNDER (D), ABOVE. SHOW THE DISTANCES BETWEEN THE CORNER AS PREVIOUSLY RESTORED OR REESTABLISHED AND (1) THE CORNER AS RESTORED OR REESTABLISHED, AND (2) TO AT LEAST 2 OF THE WITNESS MONUMENTS AS SHOWN ON THE DRAWING IN (D), ABOVE.

NONE

(F) WAS THE CORNER RESTORED THROUGH ACCEPTANCE OF (1) AN OBLITERATED EVIDENCE LOCATION, OR (2) A FOUND PERPETUATED LOCATION?

FOUND PERPETUATED LOCATION

(G & H) WAS THE CORNER REESTABLISHED THROUGH LOST CORNER PROPORTIONATE METHODS? IF SO SHOW THE METHOD, INCLUDING THE DIRECTION AND DISTANCES TO OTHER PUBLIC LAND SURVEY CORNERS USED AS EVIDENCE OR USED FOR PROPORTIONING IN DETERMINING THE CORNER LOCATION.

NIA

AFFIX LAND SURVEYOR SEAL

(I) I, Patrick A Carroll CERTIFY THAT THE LOCATION SHOWN ON THIS RECORD WAS DETERMINED BY ME OR UNDER MY DIRECTION AND CONTROL AND THAT THIS U.S. PUBLIC LAND SURVEY MONUMENT RECORD IS CORRECT AND COMPLETE TO THE BEST OF MY KNOWLEDGE AND BELIEF.

Patrick A. Carroll

SIGNATURE

5/1/02

DATE

