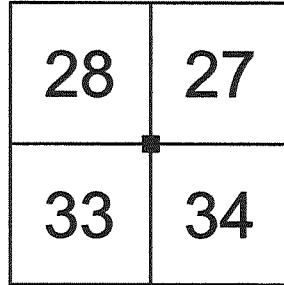


U.S. PUBLIC LAND SURVEY MONUMENT RECORD VERNON COUNTY, WISCONSIN.

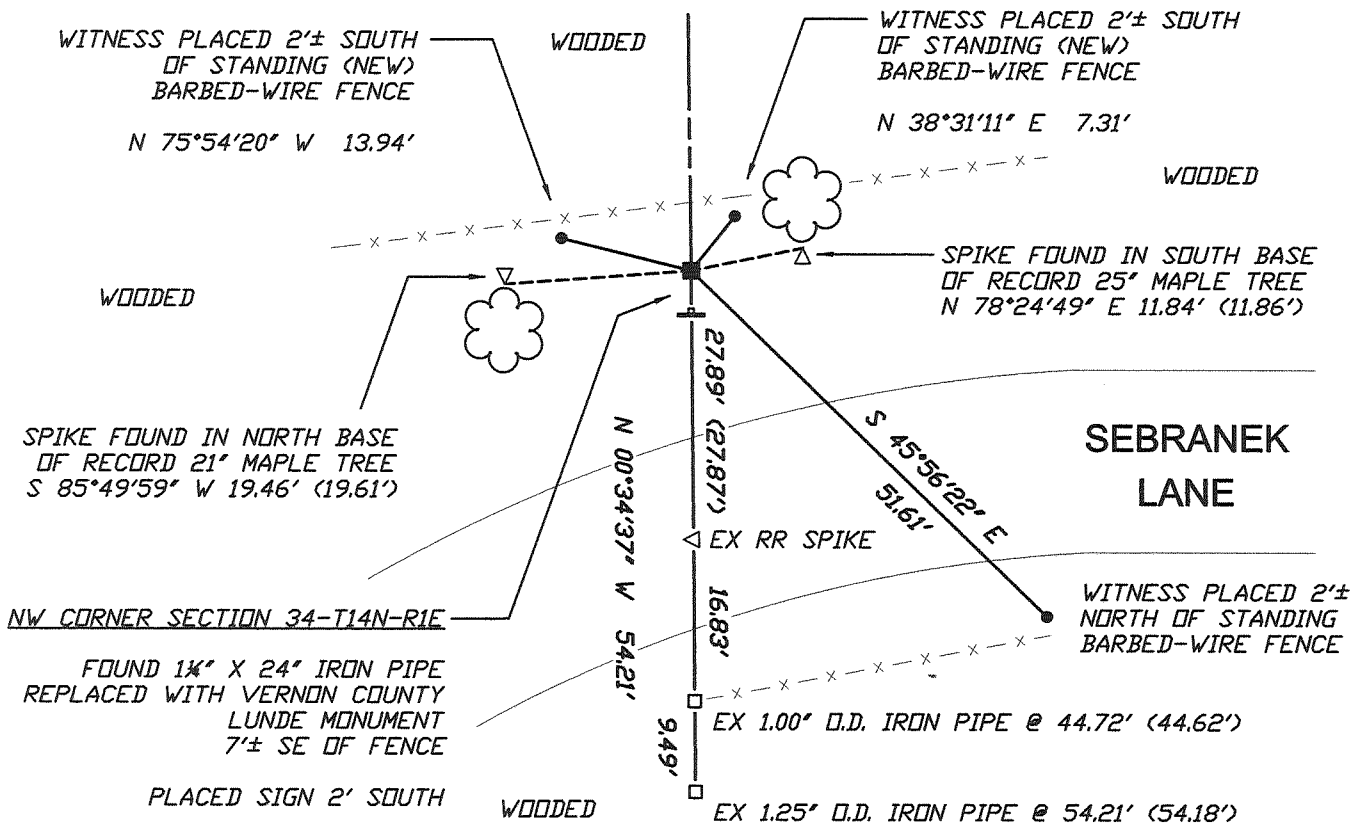
IN ACCORDANCE WITH WISCONSIN ADMINISTRATIVE CODE, CHAPTER A-E 7.08 (3) (A) - (I)

LOCATION: (A) THE IDENTITY OF THE CORNER, AS REFERENCED TO THE U.S. PUBLIC LAND SURVEY SYSTEM.

SECTION 34 - TOWN 14 N - RANGE 1 E
 TOWNSHIP OF HILLSBORO
 TYPE OF CORNER NORTHWEST CORNER
 TYPE OF MONUMENT VERNON COUNTY LUNDE MONUMENT SET



PLAN VIEW: (C) REFERENCE TO AT LEAST 4 WITNESS MONUMENTS. WITNESS MONUMENTS SHALL BE CONCRETE, NATURAL STONE, IRON, BEARING TREES OR OTHER EQUALLY DURABLE MATERIAL, EXCEPT WOOD OTHER THAN BEARING TREES; (D) A PLAN VIEW DEPICTING THE RELEVANT MONUMENTS AND REFERENCE TIES WHICH ARE SUFFICIENT IN DETAIL TO ENABLE ACCURATE RELOCATION OF THE CORNER MONUMENT IF THE CORNER MONUMENT IS DISTURBED; (E) A DESCRIPTION OF ANY MATERIAL DISCREPANCY BETWEEN THE LOCATION OF THE CORNER AS RESTORED OR REESTABLISHED AND THE LOCATION OF THAT CORNER AS PREVIOUSLY RESTORED OR REESTABLISHED;



LEGEND

- PUBLIC LAND SURVEYING SYSTEM CORNER MONUMENT DESCRIBED
- 0.75" x 24" RE-BAR PLACED AS REFERENCE MONUMENT
- EXISTING FERROUS PIPE FOUND (SIZE AS NOTED)
- EXISTING FERROUS ROD FOUND (SIZE AS NOTED)
- ‡ COUNTY SURVEYOR WITNESS SIGN ON STEEL CHANNEL POST PLACED

WOODED

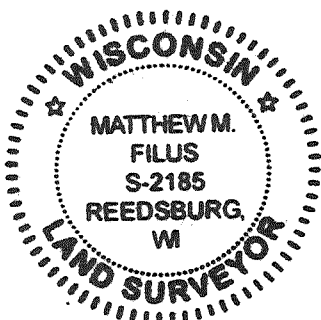
SCALE: 1" = 20 FEET

** OTHER REFERENCES AND FEATURES ARE AS NOTED IN THE PLAN VIEW ABOVE

UNLESS NOTED, BEARINGS ARE GRID

SURVEYOR'S CERTIFICATE: CHAPTER 7.08 (3) (I)

THE UNDERSIGNED HEREBY CERTIFIES THAT THE U.S. PUBLIC LAND SURVEY MONUMENT RECORD SHOWN WAS DETERMINED BY THEM OR UNDER THEIR DIRECTION AND IS CORRECT TO THE BEST OF THEIR KNOWLEDGE AND BELIEF.



Matthew M. Filus
 THE EXCELSIOR GROUP, LLC

10/6/2011

MATTHEW M FILUS, WISCONSIN REGISTERED LAND SURVEYOR S-2185

DATE CERTIFIED

U.S. PUBLIC LAND SURVEY MONUMENT RECORD VERNON COUNTY, WISCONSIN.

IN ACCORDANCE WITH WISCONSIN ADMINISTRATIVE CODE, CHAPTER A-E 7.08 (3) (A) - (I)

RECOVERY PROCEDURES:

(B) A DESCRIPTION OF ANY RECORD EVIDENCE, MONUMENT EVIDENCE, OCCUPATIONAL EVIDENCE, TESTIMONIAL EVIDENCE OR ANY OTHER MATERIAL EVIDENCE CONSIDERED BY THE SURVEYOR, AND WHETHER THE MONUMENT WAS FOUND OR PLACED;

GOVERNMENT LAND OFFICE (GLO) ORIGINAL SURVEY
DECEMBER 1851 - JANUARY 1852, J.E. DAVIDSON, SURVEYOR

NORTH BETWEEN SECTIONS 33 & 34, VARIATION 9°15' E

80.00 SET POST CORNER SECTIONS 27, 28, 33 & 34
MAPLE 18, N 59° E, 42 LINKS (27.72')
WHITE OAK 24, S 51° W, 32 LINKS (21.12')

VOLUME 1 - PAGE 356 SURVEYOR RECORDS, DECEMBER 16TH-21ST, 1889, W.H. KNOWER COUNTY SURVEYOR

IN THIS RECORD, W.H. KNOWER SUBDIVIDES SECTION 34, ESTABLISHING THIS CORNER, BUT NOT STATING A MONUMENT TYPE. A BEARING TREE IS NOTED AS A CHERRY 7½" IN DIAMETER BEARING N 88° E, 51½ LINKS (33.99').

CARROLL LAND SURVEYING, PATRICK A CARROLL, SURVEYOR

VERNON COUNTY US PUBLIC LAND SURVEY MONUMENT RECORD DATED 5/1/2002 INDICATING A 1" IRON PIPE FOUND IN PLACE ACCEPTED AS THE CORNER.

THE EXCELSIOR GROUP, LLC, AUGUST, 2011, MATTHEW M FILUS, SURVEYOR

I HAVE FOUND CARROLL'S 1¼" X 24" PIPE AND VERIFIED IT'S LOCATION CORRECT AS COMPARED TO CARROLLS'S REFERENCE TIES AS WELL AS NUMEROUS OTHER SURVEYS THAT REFERENCE THE PIPE AS THE CORNER, AS WELL AS COMPARING IT'S LOCATION TO ADJACENT SECTION CORNERS.

I HAVE REPLACED THE 1¼" X 24" PIPE WITH A VERNON COUNTY LUNDE MONUMENT, WITNESSED AS SHOWN ON SHEET 1 AND POSITIONED AS SHOWN ON SHEETS 4 AND 5 OF THIS DOCUMENT.

(E) A DESCRIPTION OF ANY MATERIAL DISCREPANCY BETWEEN THE LOCATION OF THE CORNER AS RESTORED OR REESTABLISHED AND THE LOCATION OF THAT CORNER AS PREVIOUSLY RESTORED OR REESTABLISHED;

NONE

(F) WHETHER THE CORNER WAS RESTORED THROUGH ACCEPTANCE OF AN OBLITERATED EVIDENCE LOCATION OR A FOUND PERPETUATED LOCATION;

A FOUND PERPETUATED LOCATION

(G) WHETHER THE CORNER WAS REESTABLISHED THROUGH LOST-CORNER PROPORTIONATE METHODS;

NO

SURVEYOR'S CERTIFICATE: CHAPTER 7.08 (3) (I)

THE UNDERSIGNED HEREBY CERTIFIES THAT THE U.S. PUBLIC LAND SURVEY MONUMENT RECORD SHOWN WAS DETERMINED BY THEM OR UNDER THEIR DIRECTION AND IS CORRECT TO THE BEST OF THEIR KNOWLEDGE AND BELIEF.



THE EXCELSIOR GROUP, LLC
MATTHEW M FILUS, WISCONSIN REGISTERED LAND SURVEYOR S-2185

10/6/2011

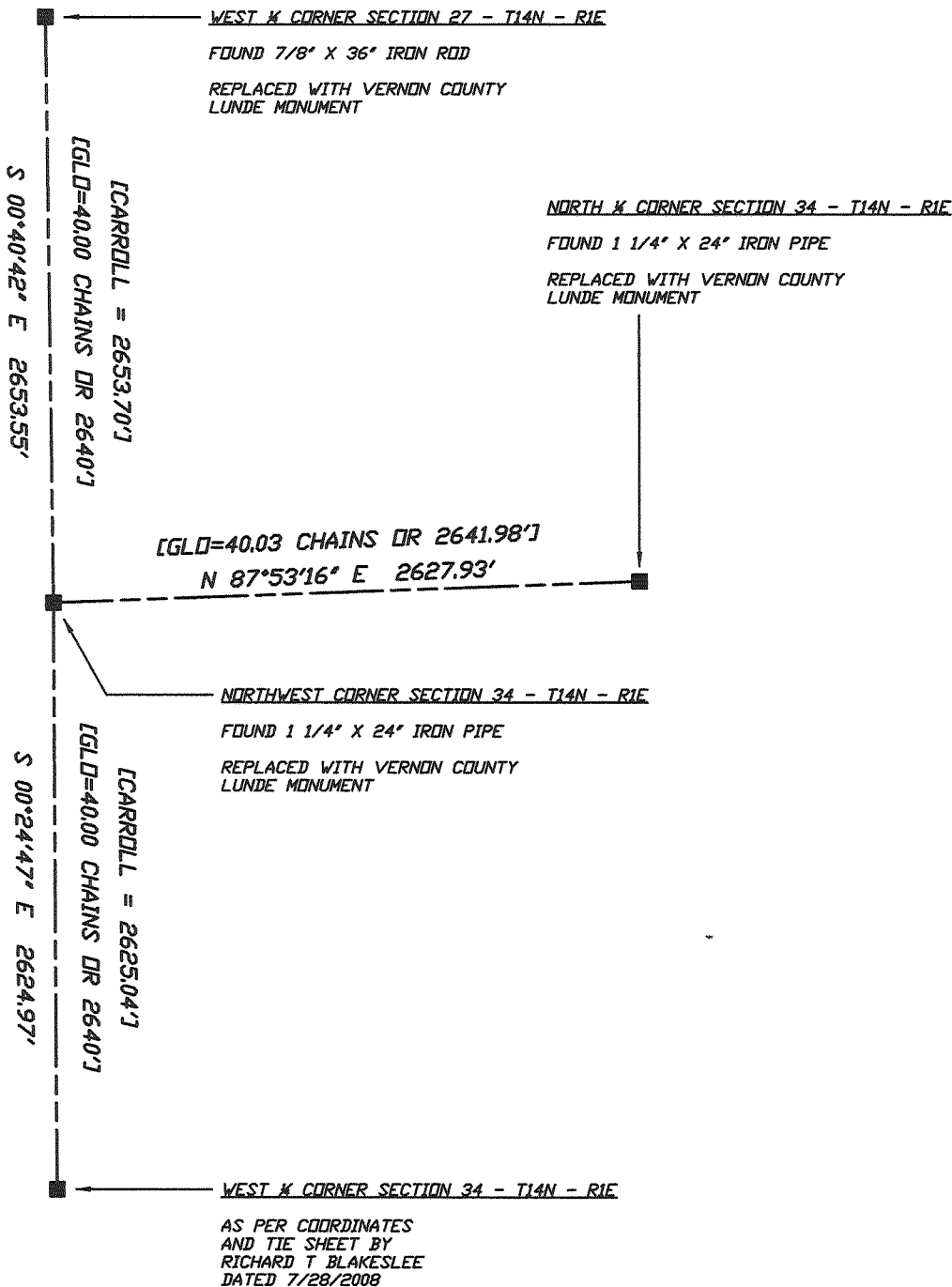
DATE CERTIFIED

U.S. PUBLIC LAND SURVEY MONUMENT RECORD VERNON COUNTY, WISCONSIN.

IN ACCORDANCE WITH WISCONSIN ADMINISTRATIVE CODE, CHAPTER A-E 7.08 (3) (A) - (I)

ADJACENT PLSS CORNER LOCATIONS:

(H) THE DIRECTIONS AND DISTANCES TO OTHER PUBLIC LAND SURVEY CORNERS WHICH WERE USED AS EVIDENCE OR USED FOR PROPORTIONING IN DETERMINING THE CORNER LOCATION;



SURVEYOR'S CERTIFICATE: CHAPTER 7.08 (3) (I)

THE UNDERSIGNED HEREBY CERTIFIES THAT THE U.S. PUBLIC LAND SURVEY MONUMENT RECORD SHOWN WAS DETERMINED BY THEM OR UNDER THEIR DIRECTION AND IS CORRECT TO THE BEST OF THEIR KNOWLEDGE AND BELIEF.



Matthew M. Filus

10/6/2011

THE EXCELSIOR GROUP, LLC
 MATTHEW M FILUS, WISCONSIN REGISTERED LAND SURVEYOR S-2185

DATE CERTIFIED

VERNON COUNTY COORDINATE FORM

"AS AN ADDENDUM TO"

A CERTIFIED U.S. PUBLIC LAND SURVEY MONUMENT RECORD

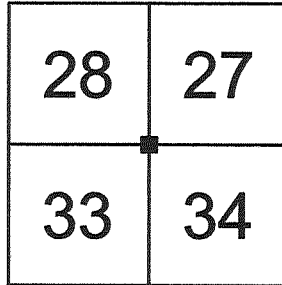
LOCATION: (A) THE IDENTITY OF THE CORNER, AS REFERENCED TO THE U.S. PUBLIC LAND SURVEY SYSTEM.

SECTION 34 - TOWN 14 N - RANGE 1 E

TOWNSHIP OF HILLSBORO

TYPE OF CORNER NORTHWEST CORNER

TYPE OF MONUMENT VERNON COUNTY LUNDE MONUMENT SET



COORDINATES: (B)

GEOGRAPHIC (DEGREES, MINUTES AND DECIMAL SECONDS TO 4 PLACES)

LATITUDE 43° 39' 15.44626" N

LONGITUDE 90° 22' 20.59421" W

ELLIPSOID HT (M) N/A

HORIZONTAL DATUM WISCRS - VERNON COUNTY - NAD83 (2007)

ORTHOMETRIC HT (US FT) N/A

VERTICAL DATUM N/A

VERNON COUNTY COORDINATES (US FT)	COORDINATE QUALITY
NORTHING <u>185,105.530</u>	<u>± 0.04'</u>
EASTING <u>838,767.652</u>	<u>± 0.06'</u>

METHOD USED TO COMPUTE COORDINATES (CHECK AND COMPLETE AS APPLICABLE)

RTK OBSERVATIONS STATIC BASELINES OPUS SOLUTION (ATTACH COPY OF OPUS REPORT)

COMBINATION OF CONVENTIONAL PROCEDURES WITH GPS OBSERVATIONS TO SET TEMPORARY CONTROL

WAS A LEAST SQUARES ADJUSTMENT USED TO COMPUTE COORDINATES?

FOR NON-OPUS SOLUTIONS, LIST THE CONTROL STATIONS USED FOR COORDINATE COMPUTATIONS (A MINIMUM OF 2 DIFFERENT CONTROL STATIONS OR 2 DIFFERENT TIME COMBINATIONS FROM THE SAME CONTROL STATION ARE REQUIRED):

WHEN A DIRECT OBSERVATION OF THE CORNER IS NOT POSSIBLE, AND A COMBINATION OF DIFFERENT GPS AND/OR CONVENTIONAL PROCEDURES MUST BE USED TO DETERMINE COORDINATE VALUES, PROVIDE A BRIEF DESCRIPTION OF YOUR PROCEDURES ON THE BACK OF THIS FORM.

** THIS CORNER MONUMENT WAS POSITIONED THROUGH A NETWORK OF BOTH GPS AND CONVENTIONAL OBSERVATIONS REFER TO SHEET 5 OF 5 FOR THE CONSTRAINED CONTROL STATIONS, OBSERVATION TIMES AND ADJUSTMENT RESULTS

REASON FOR SUBMITTAL: (C) (CHECK ONE)

BEING FILED WITH A NEW US PLSS MONUMENT RECORD

TO CORRECT THE COORDINATES LISTED ON A PREVIOUSLY FILED PLSS MONUMENT RECORD

TO PROVIDE COORDINATES FOR A PREVIOUSLY FILED PLSS MONUMENT RECORD WITHOUT COORDINATES

TO PROVIDE SUPPLEMENTAL COORDINATES FOR A PREVIOUSLY FILED PLSS MONUMENT RECORD

RLS AND DATE OF PLSS MONUMENT RECORD _____

SURVEYOR'S CERTIFICATE: (D) AGENT(S) PERFORMING GPS OBSERVATION & COORDINATE COMPUTATION

I, MATTHEW M FILUS, WISCONSIN REGISTERED LAND SURVEYOR NUMBER 2185, HEREBY CERTIFY THAT THE COORDINATES PROVIDED ON THIS RECORD WERE DETERMINED BY ME OR UNDER MY DIRECTION AND CONTROL AND THAT THIS COORDINATE SUBMISSION FORM IS CORRECT AND COMPLETE TO THE BEST OF MY KNOWLEDGE AND BELIEF.



THE EXCELSIOR GROUP, LLC
MATTHEW M FILUS, WISCONSIN REGISTERED LAND SURVEYOR S-2185

10/6/2011

DATE CERTIFIED

VERNON COUNTY COORDINATE FORM

"AS AN ADDENDUM TO"

A CERTIFIED U.S. PUBLIC LAND SURVEY MONUMENT RECORD

CONTROL STATIONS, OBSERVATION TIMES & ADJUSTMENT RESULTS:

HORIZONTAL ADJUSTMENT REPORT

Unadjusted Observations

Control Coordinates:	6 Observed Points,	0 Fixed Points,	0 Approx. Points
Sta.	N:	E:	StErr N: StErr E:
1006	184925.247	838628.458	0.036 0.032
1007	184721.580	838577.094	0.029 0.026
DILLY	182094.130	817853.323	0.000 0.000
GREENWOOD	180380.777	842706.521	0.000 0.000
HILLS	195721.217	837995.861	0.000 0.000
WONEWOC	194112.130	861156.707	0.000 0.000

Distances:			
From Sta.	To Sta.	Dist.	StErr
1006	1007	210.00	0.02
1006	BNTY2	227.79	0.01

Angles:			
BS Sta.	Occ. Sta.	FS Sta.	Angle StErr (Sec.)
1007	1006	BNTY2	203-30'48" 19

Adjusted Coordinates

Adjusted Local Coordinates			
Sta.	N:	E:	StErr N: StErr E:
1006	184925.223	838628.453	0.023 0.029
1007	184721.595	838577.097	0.022 0.024
DILLY	182094.130	817853.323	0.000 0.000
GREENWOOD	180380.777	842706.521	0.000 0.000
HILLS	195721.217	837995.861	0.000 0.000
WONEWOC	194112.130	861156.707	0.000 0.000
BNTY2	185105.530	838767.652	0.041 0.061

Adjusted Coordinates Error Ellipses, 50% CI			
Sta.	Semi Major Axis	Semi Minor Axis	Max. Error Az.
1006	0.051	0.038	S 72-12'28"E
1007	0.042	0.037	S 66-29'40"E
DILLY	0.000	0.000	N 00-00'00"E
GREENWOOD	0.000	0.000	N 00-00'00"E
HILLS	0.000	0.000	N 00-00'00"E
WONEWOC	0.000	0.000	N 00-00'00"E
BNTY2	0.119	0.044	S 59-22'00"E

Relative 1:20,000 Error and Specification Tolerances

Alta Tolerance Report ,Specific Connections, 50% Confidence Interval							
Sta.	Sta.	Dist.	Actual Semi Major	Allowable Semi Major	Ratio Actual/Allowable	Semi Minor	Max. Err. Az.
BNTY2	DILLY	21130.02	0.12	1.06	0.11	0.04	S 59-22'00"E
BNTY2	GREENWOOD	6151.26	0.12	0.31	0.39	0.04	S 59-22'00"E
BNTY2	HILLS	10643.71	0.12	0.53	0.22	0.04	S 59-22'00"E
BNTY2	WONEWOC	24132.73	0.12	1.21	0.10	0.04	S 59-22'00"E

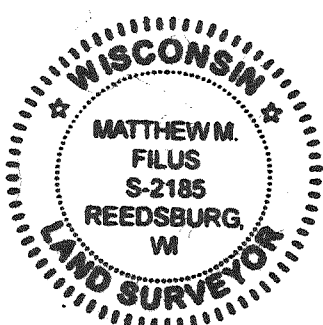
Adjusted Observations

Adjusted Distances			
From Sta.	To Sta.	Distance	Residual StdRes. StdDev
1006	1007	210.00	0.00 0.3 0.01
1006	BNTY2	227.79	-0.00 0.0 0.01
Root Mean Square (RMS)			0.00

Adjusted Angles			
BS Sta.	Occ. Sta.	FS Sta.	Angle Residual StdRes StdDev (Sec.)
1007	1006	BNTY2	203-30'48" -00 0.0 18
Root Mean Square (RMS)			00

SURVEYOR'S CERTIFICATE: (D) AGENT(S) PERFORMING GPS OBSERVATION & COORDINATE COMPUTATION

I, MATTHEW M FILUS, WISCONSIN REGISTERED LAND SURVEYOR NUMBER 2185, HEREBY CERTIFY THAT THE COORDINATES PROVIDED ON THIS RECORD WERE DETERMINED BY ME OR UNDER MY DIRECTION AND CONTROL AND THAT THIS COORDINATE SUBMISSION FORM IS CORRECT AND COMPLETE TO THE BEST OF MY KNOWLEDGE AND BELIEF.



(Handwritten Signature)

10/6/2011

THE EXCELSIOR GROUP, LLC
MATTHEW M FILUS, WISCONSIN REGISTERED LAND SURVEYOR S-2185

DATE CERTIFIED

RECEIVED

JUN 6 2002

BY: m.m.

VERNON COUNTY CERTIFIED U.S. PUBLIC LAND SURVEY MONUMENT RECORD

INSTRUCTIONS: THIS RECORD SHALL SHOW THE LOCATION OF THE CORNER AND SHALL INCLUDE ALL OF THE FOLLOWING ELEMENTS (A-I)

(A) IDENTIFY THE CORNER BY REFERENCE TO THE U.S. PUBLIC LAND SURVEY SYSTEM

■ = CORNER MONUMENT RESTORED

WITNESSES TO CORNER LOCATION:

- 1) JAMES CARROLL
- 2) DAN CARROLL
- 3)

STATE PLANE COORDINATES (WISCONSIN SOUTH ZONE)

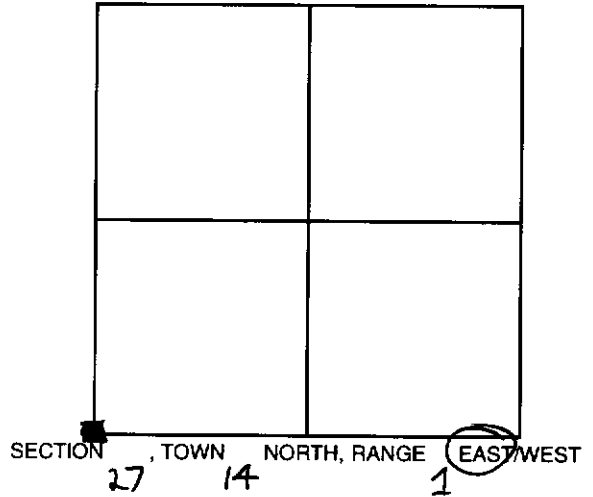
NORTHING:

EASTING:

VERNON COUNTY COORDINATES

NORTHING:

EASTING:

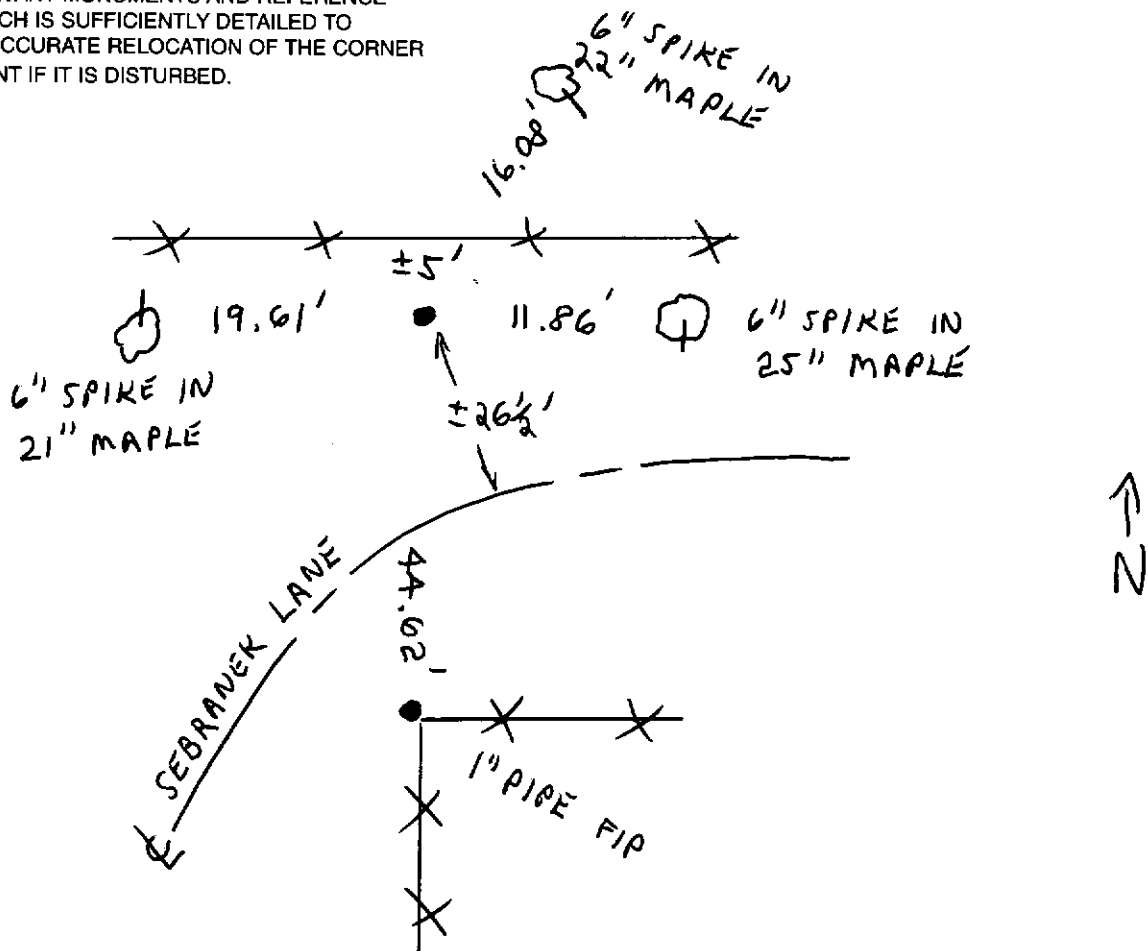


(B) DESCRIBE ANY RECORD EVIDENCE, MONUMENT EVIDENCE, OCCUPATIONAL EVIDENCE, TESTIMONIAL EVIDENCE OR ANY OTHER MATERIAL EVIDENCE YOU CONSIDERED, AND WHETHER THE MONUMENT WAS FOUND OR PLACED.

ACCEPTED 1" IRON PIPE FIP AS THE BEST EVIDENCE OF THE SW corner.

(C) IN THE PLAN VIEW DRAWING BELOW, PROVIDE REFERENCE TIES TO AT LEAST 4 WITNESS MONUMENTS OR, IF THE LOCATION IS WITHIN A MUNICIPALITY, TO AT LEAST 2 WITNESS MONUMENTS. (WITNESS MONUMENTS SHALL BE MADE OF CONCRETE, NATURAL STONE, IRON, OR OTHER EQUALLY DURABLE MATERIAL.) DESCRIBE WITNESS MONUMENTS.

(D) SHOW A PLAN VIEW DRAWING, DEPICTING THE RELEVANT MONUMENTS AND REFERENCE TIES, WHICH IS SUFFICIENTLY DETAILED TO ENABLE ACCURATE RELOCATION OF THE CORNER MONUMENT IF IT IS DISTURBED.



(E) DESCRIBE ANY MATERIAL DISCREPANCY BETWEEN THE LOCATION OF THE CORNER AS RESTORED OR REESTABLISHED AND THE LOCATION OF THAT CORNER AS PREVIOUSLY RESTORED OR REESTABLISHED BY DISTANCE AND DIRECTION. SHOW THE DISCREPANCY ON THE PLAN VIEW DRAWING UNDER (D), ABOVE. SHOW THE DISTANCES BETWEEN THE CORNER AS PREVIOUSLY RESTORED OR REESTABLISHED AND (1) THE CORNER AS RESTORED OR REESTABLISHED, AND (2) TO AT LEAST 2 OF THE WITNESS MONUMENTS AS SHOWN ON THE DRAWING IN (D), ABOVE.

NONE

(F) WAS THE CORNER RESTORED THROUGH ACCEPTANCE OF (1) AN OBLITERATED EVIDENCE LOCATION, OR (2) A FOUND PERPETUATED LOCATION?

FOUND PERPETUATED LOCATION

(G & H) WAS THE CORNER REESTABLISHED THROUGH LOST CORNER PROPORTIONATE METHODS? IF SO SHOW THE METHOD, INCLUDING THE DIRECTION AND DISTANCES TO OTHER PUBLIC LAND SURVEY CORNERS USED AS EVIDENCE OR USED FOR PROPORTIONING IN DETERMINING THE CORNER LOCATION.

N/A

AFFIX LAND SURVEYOR SEAL

(I) I, PATRICK A CARROLL CERTIFY THAT THE LOCATION SHOWN ON THIS RECORD WAS DETERMINED BY ME OR UNDER MY DIRECTION AND CONTROL AND THAT THIS U.S. PUBLIC LAND SURVEY MONUMENT RECORD IS CORRECT AND COMPLETE TO THE BEST OF MY KNOWLEDGE AND BELIEF.

Patrick A. Carroll 5/01/02
SIGNATURE DATE

