

VERNON COUNTY CERTIFIED U.S. PUBLIC LAND SURVEY MONUMENT RECORD

INSTRUCTIONS: THIS RECORD SHALL SHOW THE LOCATION OF THE CORNER AND SHALL INCLUDE ALL OF THE FOLLOWING ELEMENTS (A-I)

(A) IDENTIFY THE CORNER BY REFERENCE TO THE U.S. PUBLIC LAND SURVEY SYSTEM

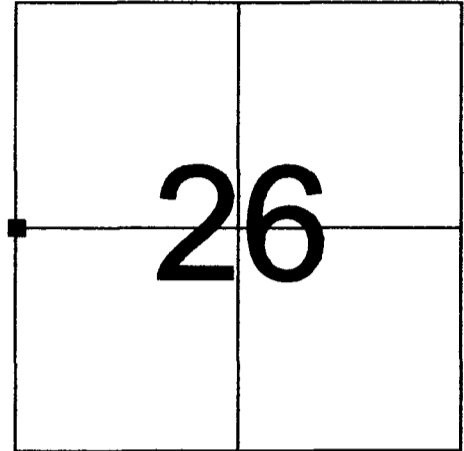
■ = CORNER MONUMENT RESTORED

WITNESSES TO CORNER LOCATION:

- 1) RICHARD BLAKESLEE
- 2) JOSH MURPHY

VERNON COUNTY COORDINATES

NORTHING: 187939.835
EASTING: 844003.328



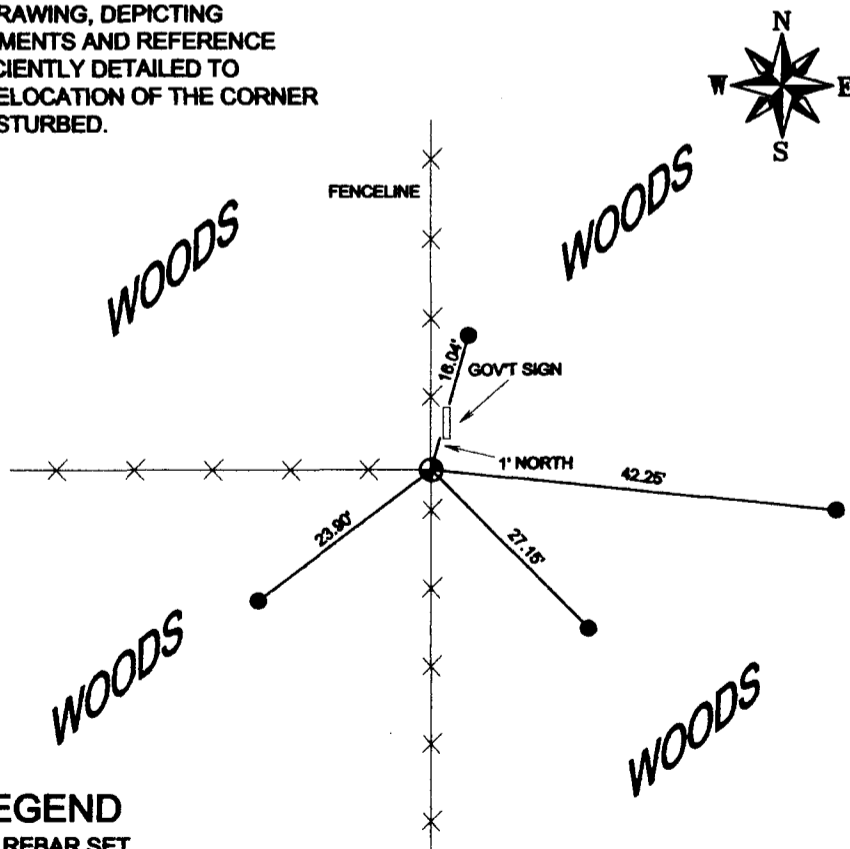
SECTION 26, TOWN 14 NORTH, RANGE 1 EAST

(B) DESCRIBE ANY RECORD EVIDENCE, MONUMENT EVIDENCE, OCCUPATIONAL EVIDENCE, TESTIMONIAL EVIDENCE OR ANY OTHER MATERIAL EVIDENCE YOU CONSIDERED, AND WHETHER THE MONUMENT WAS FOUND OR PLACED.

RESEARCHED ALL VERNON COUNTY SURVEY RECORDS REGARDING THIS CORNER, FOUND NO RECORD'S OF ANY SURVEY'S DONE IN SECTIONS 26 AND 27 IN VOL.'S 1 AND 2 OF VERNON COUNTY SURVEY RECORDS. FOUND THAT THE ORIGINAL CORNER WAS SET IN 1852 PER GOVERNMENT NOTES. WE DID NOT FIND ANY EVIDENCE OF ANY OF THE ORIGINAL BEARING TREES. WE FOUND A 3/4" IRON PIPE FROM A PREVIOUS SURVEY AT A GOOD STANDING THREE WAY FENCE. NUMEROUS OTHER SURVEYORS HAVE ACCEPTED THIS POSITION TO BE CORRECT. WE REPLACED THE 1" IRON PIPE WITH A VERNON COUNTY MONUMENT.

(C) IN THE PLAN VIEW DRAWING BELOW, PROVIDE REFERENCE TIES TO AT LEAST 4 WITNESS MONUMENTS OR, IF THE LOCATION IS WITHIN A MUNICIPALITY, TO AT LEAST 2 WITNESS MONUMENTS. (WITNESS MONUMENTS SHALL BE MADE OF CONCRETE, NATURAL STONE, IRON, OR OTHER EQUALLY DURABLE MATERIAL.) DESCRIBE WITNESS MONUMENTS.

(D) SHOW A PLAN VIEW DRAWING, DEPICTING THE RELEVANT MONUMENTS AND REFERENCE TIES, WHICH IS SUFFICIENTLY DETAILED TO ENABLE ACCURATE RELOCATION OF THE CORNER MONUMENT IF IT IS DISTURBED.



LEGEND

- 3/4" X 24" REBAR SET
WEIGHING 1.50 LBS./LIN. FT.
- ⊕ VERNON COUNTY MONUMENT W/
BRASS CAP SET

SCANNED

(E) DESCRIBE ANY MATERIAL DISCREPANCY BETWEEN THE LOCATION OF THE CORNER AS RESTORED OR REESTABLISHED AND THE LOCATION OF THAT CORNER AS PREVIOUSLY RESTORED OR REESTABLISHED BY DISTANCE AND DIRECTION. SHOW THE DISCREPANCY ON THE PLAN VIEW DRAWING UNDER (D), ABOVE. SHOW THE DISTANCES BETWEEN THE CORNER AS PREVIOUSLY RESTORED OR REESTABLISHED AND (1) THE CORNER AS RESTORED OR REESTABLISHED, AND (2) TO AT LEAST 2 OF THE WITNESS MONUMENTS AS SHOWN ON THE DRAWING IN (D), ABOVE.

RECORDED DISTANCE ON C.S.M. NO. 407 BETWEEN NW CORNER AND W1/4 CORNER IS 2650.81'. OUR DISTANCE IS 2652.17'

(F) WAS THE CORNER RESTORED THROUGH ACCEPTANCE OF (1) AN OBLITERATED EVIDENCE LOCATION, OR (2) A FOUND PERPETUATED LOCATION?

OLD FENCE CORNER ASSUMED TO PERPETUATE ORIGINAL CORNER'S LOCATION

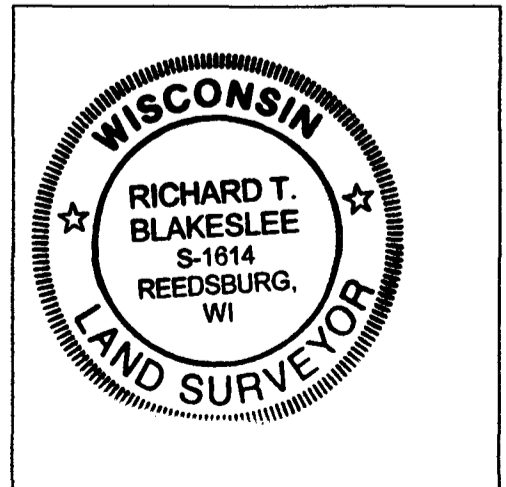
(G & H) WAS THE CORNER REESTABLISHED THROUGH LOST CORNER PROPORTIONATE METHODS? IF SO SHOW THE METHOD, INCLUDING THE DIRECTIONS AND DISTANCES TO OTHER PUBLIC LAND SURVEY CORNERS USED AS EVIDENCE OR USED FOR PROPORTIONING IN DETERMINING THE CORNER LOCATION.

NO

(I) I, RICHARD T. BLAKESLEE CERTIFY THAT THE LOCATION SHOWN ON THIS RECORD WAS DETERMINED BY ME OR UNDER MY DIRECTION AND CONTROL AND THAT THIS U.S. PUBLIC LAND SURVEY MONUMENT RECORD IS CORRECT AND COMPLETE TO THE BEST OF MY KNOWLEDGE AND BELIEF.

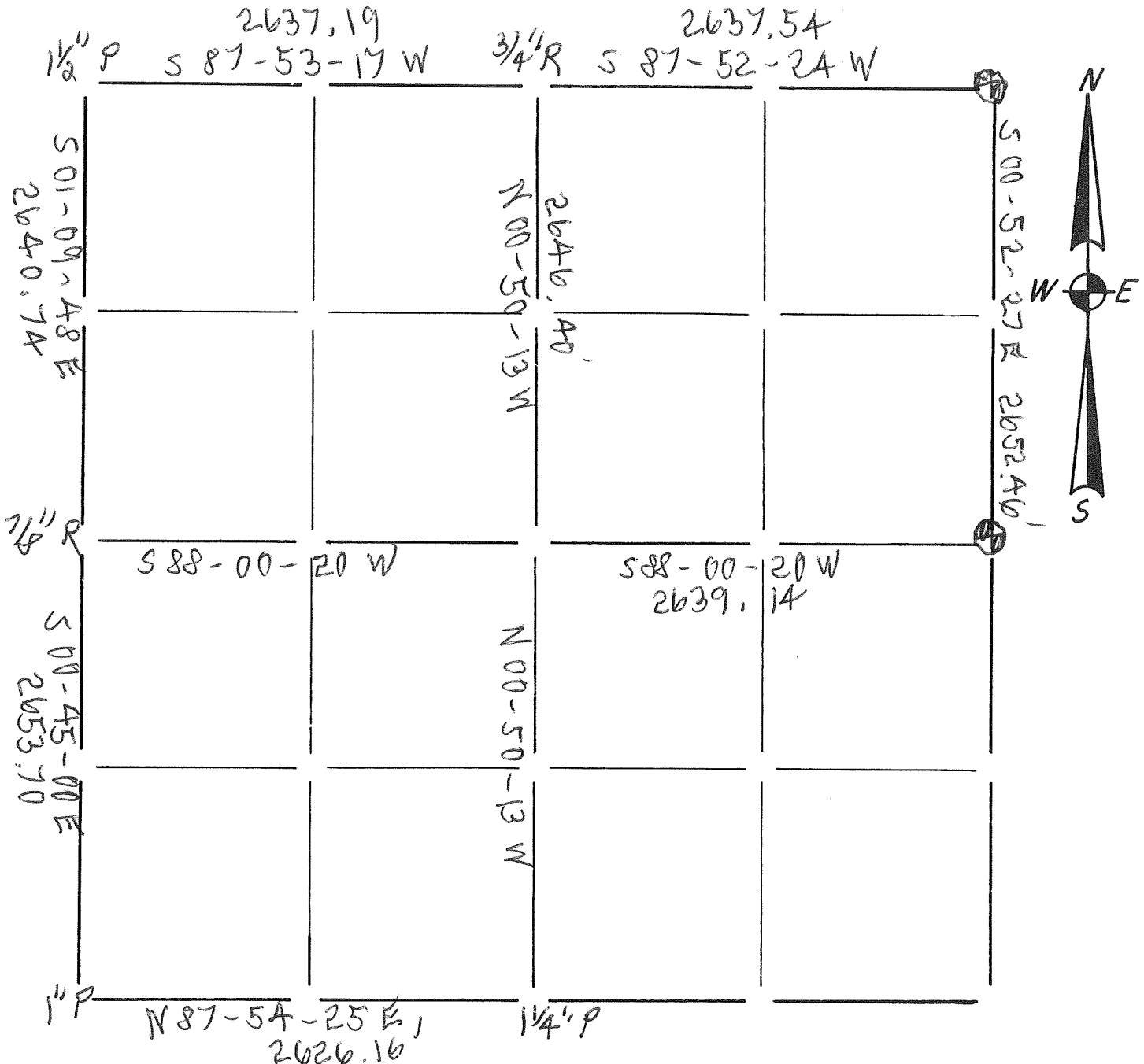
Richard T. Blakeslee 4-17-07
SIGNATURE DATE

AFFIX LAND SURVEYOR SEAL



Section Summary and Index

27 - 14N - 1E
 Section Town Range
 TN HILLSBORO VERNON CO



LEGEND

- - Harrison cast iron monument. 4" ALUM VERNON CO, MON.
- - Stone or concrete monument.
- - Other _____

Paul A. [Signature]
 5/15/15