

DEC 17 1997

CERTIFIED LAND CORNER

STATE OF WISCONSIN )  
COUNTY OF VERNON ) S.S.

CERTIFICATE

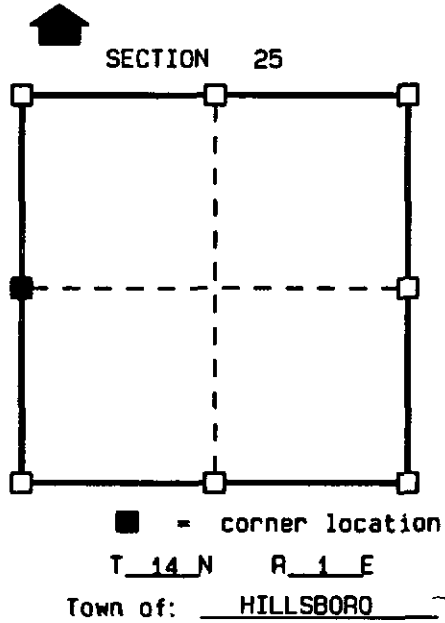
I, F. CURTIS CROOK, do hereby certify that on the 10th day of OCTOBER 1997, I found (evidence) ~~(no evidence)~~ of the W 1/4 corner of SECTION 25, T. 14 N. R. 1 E. Fourth Principal Meridian, and I re-established said corner according to the Wisconsin Statutes as shown and described hereon.

Dated this 15th day of Dec 1997

F. CURTIS CROOK R.L.S. S-1292



Seal



History of original corner establishment:

ORIGINAL CORNER ESTABLISHED BY JAMES M. MARSH IN 1845.  
JOHN L. BREY SET A 1" IRON BAR AT THE CORNER (C.S.M. VOL. 1, PAGE 65).

Description of corner evidence found:

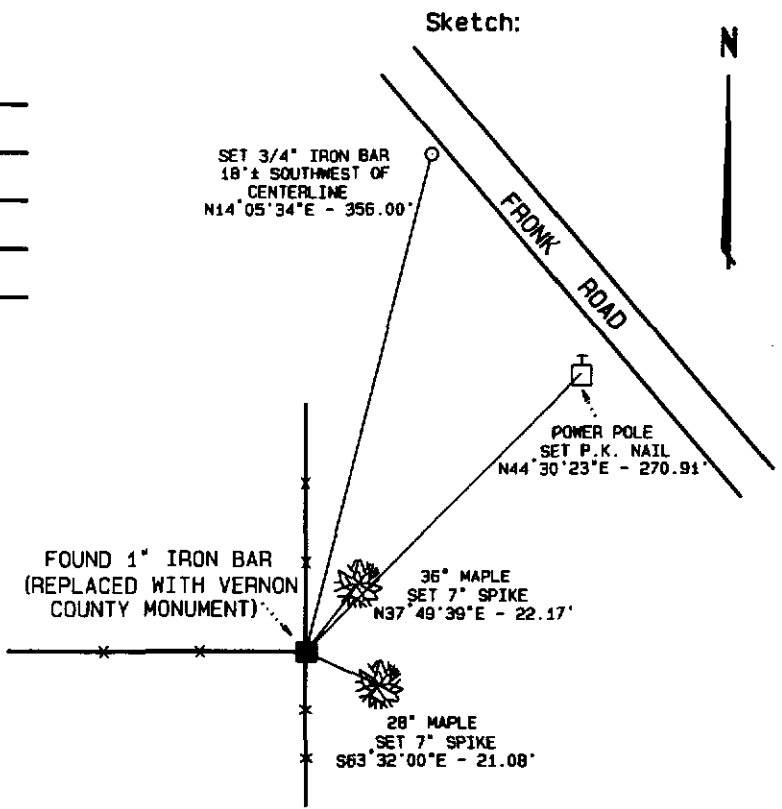
FOUND JOHN BREY'S 1" IRON BAR AND ACCEPTED LOCATION.  
REPLACED THE BAR WITH A VERNON COUNTY MONUMENT AND MADE TIES AS SHOWN BELOW.

Description of corner and witness monuments, references and accessories used to perpetuate the original or re-established location of this corner:

Witnesses to corner location:

CHAD CROOK  
WADE CROOK  
MIKE EWING

NOTES:  
DRAWING IS NOT TO SCALE.  
BEARINGS ARE REFERENCED TO PROJECT.  
VERNON COUNTY MONUMENTS ARE LUNDE MONUMENTS.  
SET SURVEY MARKER SIGN NEAR MONUMENT.



(THIS CORNER SET AS PART OF VERNON COUNTY'S 1997 REMONUMENTATION PROJECT.)

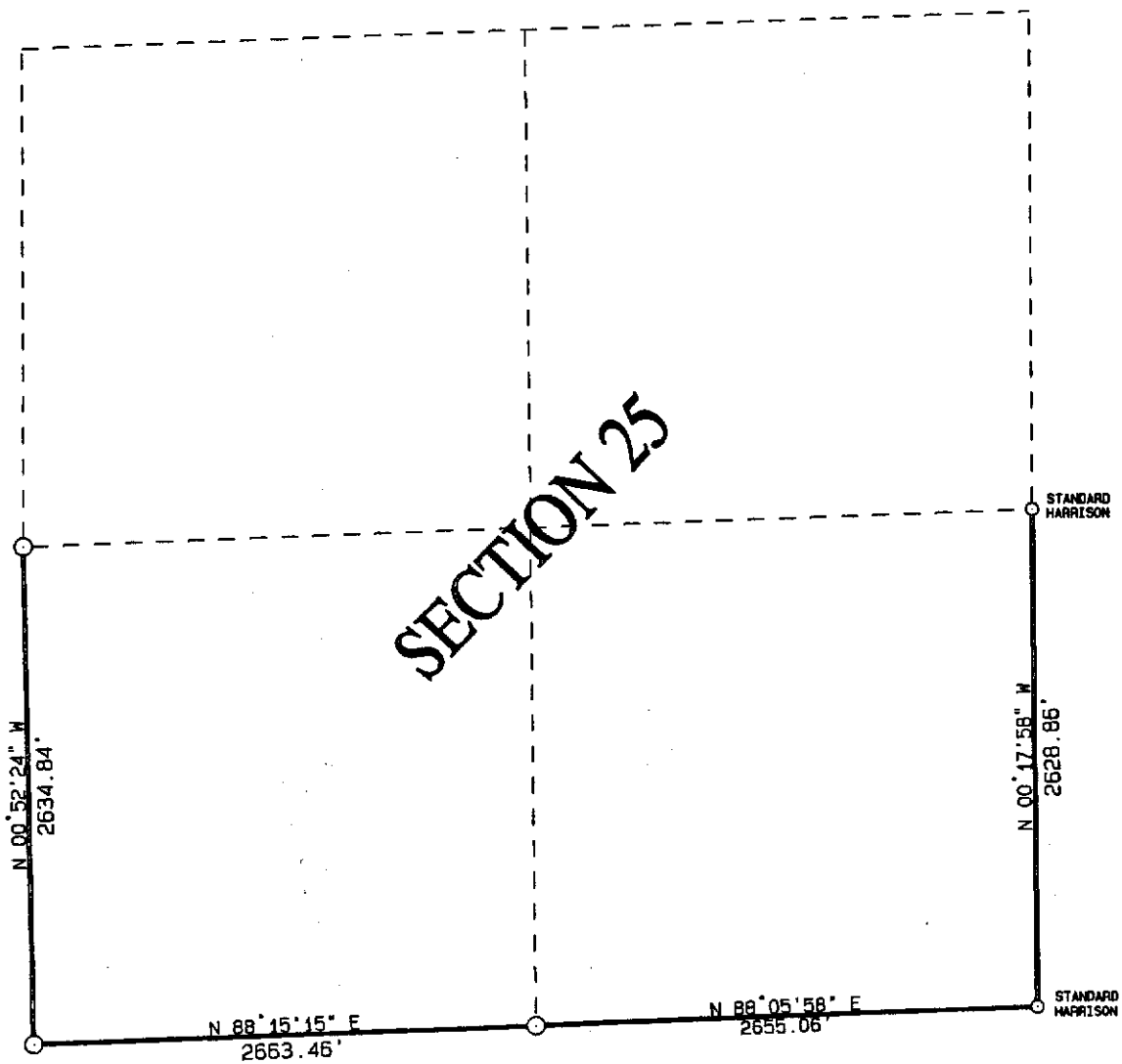
VERNON COUNTY COORDINATES

North (Y)	East (X)
188095.470	849240.006

42

DATA SHEET

SECTION 25, T14N, R1E  
TOWN OF HILLSBORO, VERNON COUNTY



NOTE: ALL CORNERS (WITH EXCEPTION OF THOSE NOTED)  
ARE VERNON COUNTY MONUMENTS.

THIS DATA SHEET PREPARED AS PART OF  
VERNON COUNTY'S 1997 REMONUMENTATION PROJECT.