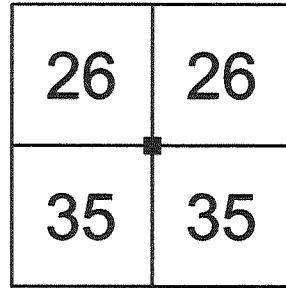


U.S. PUBLIC LAND SURVEY MONUMENT RECORD VERNON COUNTY, WISCONSIN.

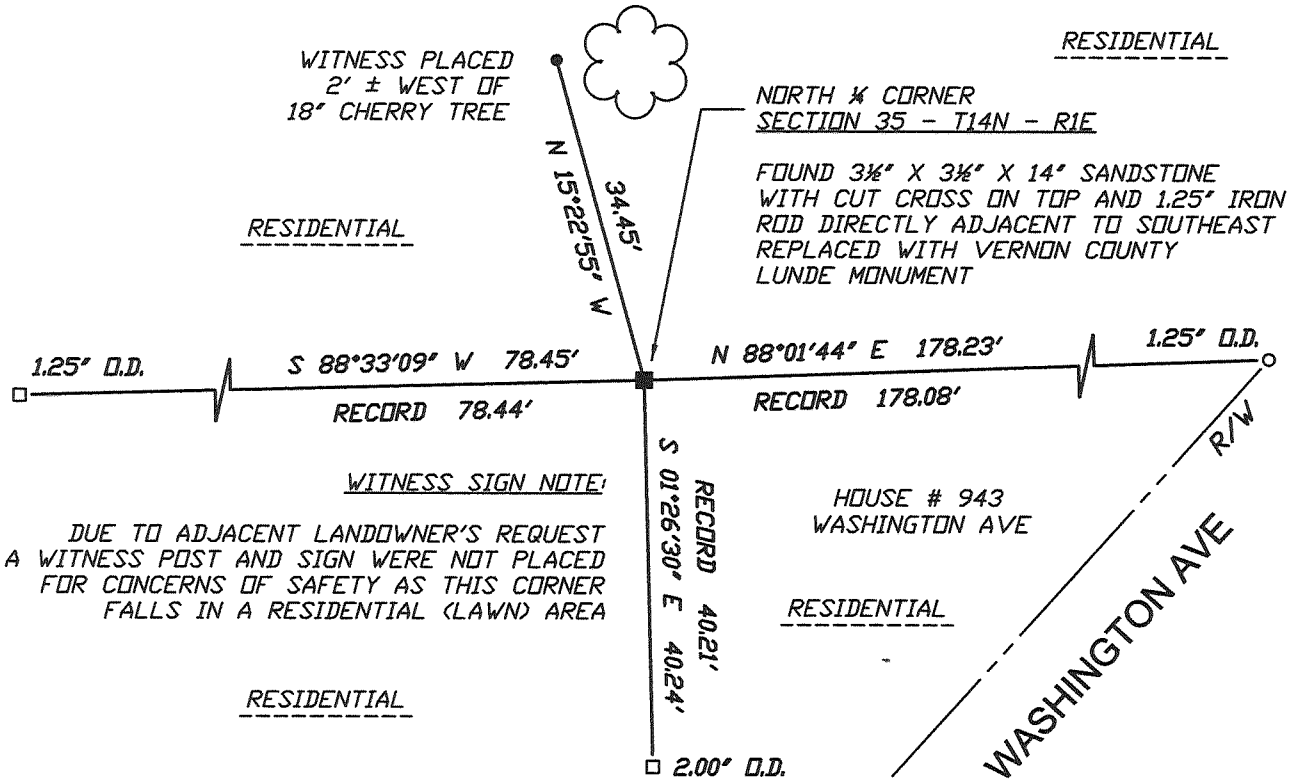
IN ACCORDANCE WITH WISCONSIN ADMINISTRATIVE CODE, CHAPTER A-E 7.08 (3) (A) - (I)

LOCATION: (A) THE IDENTITY OF THE CORNER, AS REFERENCED TO THE U.S. PUBLIC LAND SURVEY SYSTEM.

SECTION 35 - TOWN 14 N - RANGE 1 E
 TOWNSHIP OF HILLSBORO (CITY)
 TYPE OF CORNER NORTH ONE-QUARTER CORNER
 TYPE OF MONUMENT VERNON COUNTY LUNDE MONUMENT SET



PLAN VIEW: (C) REFERENCE TO AT LEAST 4 WITNESS MONUMENTS. WITNESS MONUMENTS SHALL BE CONCRETE, OTHER THAN BEARING TREES; (D) A PLAN VIEW DEPICTING THE RELEVANT MONUMENTS AND REFERENCE TIES WHICH ARE SUFFICIENT IN DETAIL TO ENABLE ACCURATE RELOCATION OF THE CORNER MONUMENT IF THE CORNER MONUMENT IS DISTURBED; (E) A DESCRIPTION OF ANY MATERIAL DISCREPANCY BETWEEN THE LOCATION OF THE CORNER AS RESTORED OR REESTABLISHED AND THE LOCATION OF THAT CORNER AS PREVIOUSLY RESTORED OR REESTABLISHED;



LEGEND

- PUBLIC LAND SURVEYING SYSTEM CORNER MONUMENT DESCRIBED
- 0.75" x 24" RE-BAR PLACED AS REFERENCE MONUMENT
- EXISTING FERROUS PIPE FOUND (SIZE AS NOTED)
- EXISTING FERROUS ROD FOUND (SIZE AS NOTED)
- ‡ COUNTY SURVEYOR WITNESS SIGN ON STEEL CHANNEL POST PLACED

SCALE: 1" = 20 FEET

** OTHER REFERENCES AND FEATURES ARE AS NOTED IN THE PLAN VIEW ABOVE

UNLESS NOTED, BEARINGS ARE GRID

SURVEYOR'S CERTIFICATE: CHAPTER 7.08 (3) (I)

THE UNDERSIGNED HEREBY CERTIFIES THAT THE U.S. PUBLIC LAND SURVEY MONUMENT RECORD SHOWN WAS DETERMINED BY THEM OR UNDER THEIR DIRECTION AND IS CORRECT TO THE BEST OF THEIR KNOWLEDGE AND BELIEF.



Matthew M. Filus
 THE EXCELSIOR GROUP, LLC

9/1/2011

MATTHEW M FILUS, WISCONSIN REGISTERED LAND SURVEYOR S-2185

DATE CERTIFIED

U.S. PUBLIC LAND SURVEY MONUMENT RECORD VERNON COUNTY, WISCONSIN.

IN ACCORDANCE WITH WISCONSIN ADMINISTRATIVE CODE, CHAPTER A-E 7.08 (3) (A) - (I)

RECOVERY PROCEDURES:

(B) A DESCRIPTION OF ANY RECORD EVIDENCE, MONUMENT EVIDENCE, OCCUPATIONAL EVIDENCE, TESTIMONIAL EVIDENCE OR ANY OTHER MATERIAL EVIDENCE CONSIDERED BY THE SURVEYOR, AND WHETHER THE MONUMENT WAS FOUND OR PLACED;

GOVERNMENT LAND OFFICE (GLO) ORIGINAL SURVEY
DECEMBER 1851 - JANUARY 1852, J.E. DAVIDSON, SURVEYOR

WEST CORRECTED BETWEEN SECTIONS 26 & 35, VARIATION 10°15' E

7.60 CREEK 20 LINKS WIDE RUNS NE

39.80 SET QUARTER SECTION POST
BURR OAK 16, N 52° E, 17 LINKS (11.22')
ASPEN 12, S 13° W, 10 LINKS (6.60')

79.60 SECTION CORNER

SUBDIVISION PLATS

ORIGINAL PLAT, VILLAGE OF HILLSBOROUGH, AUGUST 7TH, 1856, JAMES H DANIELS, SURVEYOR

BOUNDARY DESCRIPTION STATES "...QUARTER POST ON THE NORTH SIDE OF SAID SECTION (35) FROM WHICH A CHERRY TEN INCHES IN DIAMETER BEARS SOUTH 28½ DEGREES EAST DISTANT SIXTY AND A HALF LINKS (39.93') AND A BR (BURR) OAK FOUR INCHES DIAMETER BEARS SOUTH 68½ DEGREES WEST DISTANT FOURTEEN LINKS (9.24')..."

THE FIELD ADDITION TO THE VILLAGE OF HILLSBORO, JANUARY 20TH, 1900, C.J. LIND, SURVEYOR

"¼ POST" INDICATED ON THE FACE OF THE PLAT WHERE THE "N-S ¼ LINE OF SECTION 35" INTERSECTS THE "E & W SECTION LINE BETWEEN SECTIONS NUMBERS 26 & 35".

FIELD'S 2ND ADDITION TO HILLSBORO, OCTOBER 13TH, 1911, H.D. BLAKE, SURVEYOR

BOUNDARY DESCRIPTION STATES "BEGINNING AT AN IRON STAKE AT THE ¼ CORNER ON THE NORTH SIDE OF SECTION 35..."

E WATSON'S ADDITION TO THE VILLAGE OF HILLSBORO, MARCH 11TH, 1915, HENRY LUETH, SURVEYOR

"STONE NORTH ¼ POST OF SECTION 35, T14N, R1E" INDICATED ON THE FACE OF THE PLAT

MODERN-ERA SURVEYS, 1973 THRU 2008

SURVEYORS HERMAN HOVELSRUD, JAMES CARROLL, JOHN BRENNEMAN, RONALD HAYDEN AND PATRICK CARROLL HAVE FILED SURVEYS REFERENCING THE CORNER AS A STONE MONUMENT WITH CROSS ON TOP, JAMES CARROLL INDICATING A 1¼" ROD ADJACENT TO THE STONE IN 1985.

THE EXCELSIOR GROUP, LLC, AUGUST, 2011, MATTHEW M FILUS, SURVEYOR

I HAVE FOUND THE STONE MONUMENT OF RECORD AND VERIFIED IT'S POSITION BY REFERENCE TIES TO ADJACENT PROPERTY CORNERS AS SHOWN ON SHEET 1 OF THIS DOCUMENT. REPLACED THE STONE MONUMENT WITH A VERNON COUNTY LUNDE MONUMENT, WITNESSED AS SHOWN ON SHEET 1 AND POSITIONED AS SHOWN ON SHEETS 4 AND 5 OF THIS DOCUMENT.

(E) A DESCRIPTION OF ANY MATERIAL DISCREPANCY BETWEEN THE LOCATION OF THE CORNER AS RESTORED OR REESTABLISHED AND THE LOCATION OF THAT CORNER AS PREVIOUSLY RESTORED OR REESTABLISHED;

NONE

(F) WHETHER THE CORNER WAS RESTORED THROUGH ACCEPTANCE OF AN OBLITERATED EVIDENCE LOCATION OR A FOUND PERPETUATED LOCATION;

A FOUND PERPETUATED LOCATION

(G) WHETHER THE CORNER WAS REESTABLISHED THROUGH LOST-CORNER PROPORTIONATE METHODS;

NO

SURVEYOR'S CERTIFICATE: CHAPTER 7.08 (3) (I)

THE UNDERSIGNED HEREBY CERTIFIES THAT THE U.S. PUBLIC LAND SURVEY MONUMENT RECORD SHOWN WAS DETERMINED BY THEM OR UNDER THEIR DIRECTION AND IS CORRECT TO THE BEST OF THEIR KNOWLEDGE AND BELIEF.



A handwritten signature in black ink, appearing to read "Matthew M. Filus".

THE EXCELSIOR GROUP, LLC
MATTHEW M FILUS, WISCONSIN REGISTERED LAND SURVEYOR S-2185

A handwritten date "9/1/2011" in black ink.

DATE CERTIFIED

U.S. PUBLIC LAND SURVEY MONUMENT RECORD VERNON COUNTY, WISCONSIN.

IN ACCORDANCE WITH WISCONSIN ADMINISTRATIVE CODE, CHAPTER A-E 7.08 (3) (A) - (I)

ADJACENT PLSS CORNER LOCATIONS:

(H) THE DIRECTIONS AND DISTANCES TO OTHER PUBLIC LAND SURVEY CORNERS WHICH WERE USED AS EVIDENCE OR USED FOR PROPORTIONING IN DETERMINING THE CORNER LOCATION;

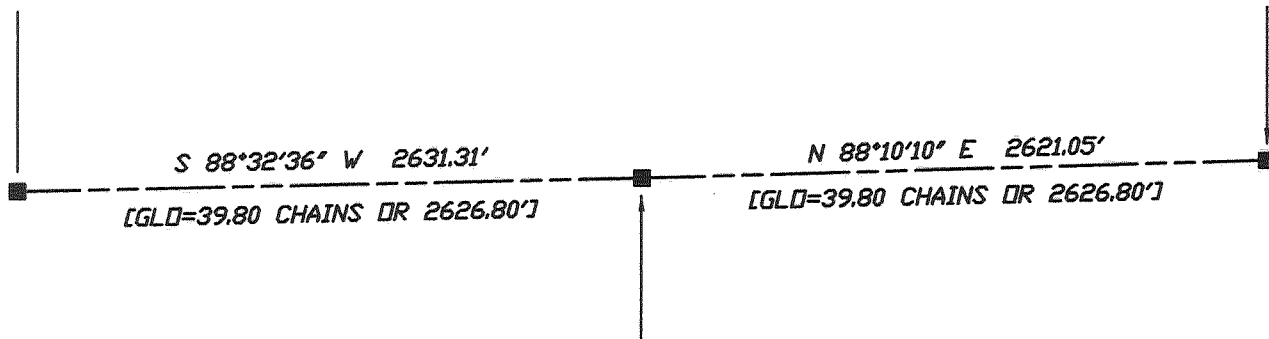
NORTHWEST CORNER SECTION 35 - T14N - R1E

NORTHEAST CORNER SECTION 35 - T14N - R1E

COMPUTED LOCATION IN HILLSBORO HIGH SCHOOL
ATHLETIC FIELD (FOOTBALL FIELD)

AS PER COORDINATES
AND TIE SHEET
BY F CURTIS CROOK
DATED 12/15/1997

SEE DOSSIER BY THIS SURVEYOR



NORTH $\frac{1}{4}$ CORNER SECTION 35 - T14N - R1E

FOUND $3\frac{1}{2}$ " X $3\frac{1}{2}$ " X 14" SANDSTONE
WITH CUT CROSS ON TOP AND 1.25" IRON ROD
DIRECTLY ADJACENT TO SOUTHEAST

REPLACED WITH VERNON COUNTY
LUNDE MONUMENT



NOT TO SCALE
UNLESS NOTED, BEARINGS ARE GRID

SURVEYOR'S CERTIFICATE: CHAPTER 7.08 (3) (I)

THE UNDERSIGNED HEREBY CERTIFIES THAT THE U.S. PUBLIC LAND SURVEY MONUMENT RECORD SHOWN WAS DETERMINED BY THEM OR UNDER THEIR DIRECTION AND IS CORRECT TO THE BEST OF THEIR KNOWLEDGE AND BELIEF.



Matthew M. Filus

9/1/2011

THE EXCELSIOR GROUP, LLC
MATTHEW M FILUS, WISCONSIN REGISTERED LAND SURVEYOR S-2185

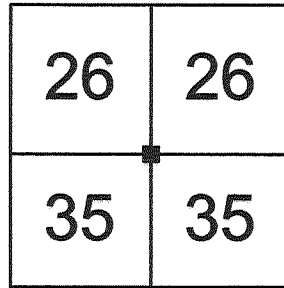
DATE CERTIFIED

VERNON COUNTY COORDINATE FORM

"AS AN ADDENDUM TO"
A CERTIFIED U.S. PUBLIC LAND SURVEY MONUMENT RECORD

LOCATION: (A) THE IDENTITY OF THE CORNER, AS REFERENCED TO THE U.S. PUBLIC LAND SURVEY SYSTEM.

SECTION 35 - TOWN 14 N - RANGE 1 E
 TOWNSHIP OF HILLSBORO (CITY)
 TYPE OF CORNER NORTH ONE-QUARTER CORNER
 TYPE OF MONUMENT VERNON COUNTY LUNDE MONUMENT SET



COORDINATES: (B)

GEOGRAPHIC (DEGREES, MINUTES AND DECIMAL SECONDS TO 4 PLACES)

LATITUDE 43° 39' 17.73000" N
 LONGITUDE 90° 20' 33.22252" W
 ELLIPSOID HT (M) N/A
 HORIZONTAL DATUM WISCRS - VERNON COUNTY - NAD83 (2007)
 ORTHOMETRIC HT (US FT) N/A
 VERTICAL DATUM N/A

VERNON COUNTY COORDINATES (US FT)	COORDINATE QUALITY
NORTHING <u>185,377.222</u>	<u>± 0.06'</u>
EASTING <u>846,660.447</u>	<u>± 0.04'</u>

METHOD USED TO COMPUTE COORDINATES (CHECK AND COMPLETE AS APPLICABLE)

RTK OBSERVATIONS STATIC BASELINES OPUS SOLUTION (ATTACH COPY OF OPUS REPORT)
 COMBINATION OF CONVENTIONAL PROCEDURES WITH GPS OBSERVATIONS TO SET TEMPORARY CONTROL

WAS A LEAST SQUARES ADJUSTMENT USED TO COMPUTE COORDINATES?

FOR NON-OPUS SOLUTIONS, LIST THE CONTROL STATIONS USED FOR COORDINATE COMPUTATIONS (A MINIMUM OF 2 DIFFERENT CONTROL STATIONS OR 2 DIFFERENT TIME COMBINATIONS FROM THE SAME CONTROL STATION ARE REQUIRED):

WHEN A DIRECT OBSERVATION OF THE CORNER IS NOT POSSIBLE, AND A COMBINATION OF DIFFERENT GPS AND/OR CONVENTIONAL PROCEDURES MUST BE USED TO DETERMINE COORDINATE VALUES, PROVIDE A BRIEF DESCRIPTION OF YOUR PROCEDURES ON THE BACK OF THIS FORM.

** THIS CORNER MONUMENT WAS POSITIONED THROUGH A NETWORK OF BOTH GPS AND CONVENTIONAL OBSERVATIONS REFER TO SHEET 5 OF 5 FOR THE CONSTRAINED CONTROL STATIONS, OBSERVATION TIMES AND ADJUSTMENT RESULTS

REASON FOR SUBMITTAL: (C) (CHECK ONE)

BEING FILED WITH A NEW US PLSS MONUMENT RECORD
 TO CORRECT THE COORDINATES LISTED ON A PREVIOUSLY FILED PLSS MONUMENT RECORD
 TO PROVIDE COORDINATES FOR A PREVIOUSLY FILED PLSS MONUMENT RECORD WITHOUT COORDINATES
 TO PROVIDE SUPPLEMENTAL COORDINATES FOR A PREVIOUSLY FILED PLSS MONUMENT RECORD

PLSS AND DATE OF PLSS MONUMENT RECORD _____

SURVEYOR'S CERTIFICATE: (D) AGENT(S) PERFORMING GPS OBSERVATION & COORDINATE COMPUTATION

I, MATTHEW M FILUS, WISCONSIN REGISTERED LAND SURVEYOR NUMBER 2185, HEREBY CERTIFY THAT THE COORDINATES PROVIDED ON THIS RECORD WERE DETERMINED BY ME OR UNDER MY DIRECTION AND CONTROL AND THAT THIS COORDINATE SUBMISSION FORM IS CORRECT AND COMPLETE TO THE BEST OF MY KNOWLEDGE AND BELIEF.



Matthew M. Filus

9/1/2011

THE EXCELSIOR GROUP, LLC
 MATTHEW M FILUS, WISCONSIN REGISTERED LAND SURVEYOR S-2185

DATE CERTIFIED

VERNON COUNTY COORDINATE FORM

"AS AN ADDENDUM TO"

A CERTIFIED U.S. PUBLIC LAND SURVEY MONUMENT RECORD

CONTROL STATIONS, OBSERVATION TIMES & ADJUSTMENT RESULTS:

HORIZONTAL ADJUSTMENT REPORT

Unadjusted Observations

Control Coordinates:	6 Observed Points,	0 Fixed Points,	0 Approx. Points	
Sta.	N:	E:	StErr N:	StErr E:
1002	185360.510	846667.329	0.036	0.027
1003	185370.040	846825.043	0.037	0.030
DILLY	182094.130	817853.323	0.000	0.000
GREENWOOD	180380.777	842706.521	0.000	0.000
HILLS	195721.217	837995.861	0.000	0.000
WONEWOC	194112.130	861156.707	0.000	0.000

Distances:			
From Sta.	To Sta.	Dist.	StErr
1002	11SET	18.07	0.02

Angles:				
BS Sta.	Occ. Sta.	FS Sta.	Angle	StErr (Sec.)
1003	1002	11SET	251-09'08"	143

Adjusted Coordinates

Adjusted Local Coordinates				
Sta.	N:	E:	StErr N:	StErr E:
1002	185360.507	846667.305	0.052	0.030
1003	185370.043	846825.073	0.053	0.031
DILLY	182094.130	817853.323	0.000	0.000
GREENWOOD	180380.777	842706.521	0.000	0.000
HILLS	195721.217	837995.861	0.000	0.000
WONEWOC	194112.130	861156.707	0.000	0.000
11SET	185377.222	846660.447	0.058	0.036

Adjusted Coordinates Error Ellipses, 50% CI			
Sta.	Semi Major Axis	Semi Minor Axis	Max. Error Az.
1002	0.089	0.052	S 02-04'34"E
1003	0.092	0.053	S 02-32'54"E
DILLY	0.000	0.000	N 00-00'00"E
GREENWOOD	0.000	0.000	N 00-00'00"E
HILLS	0.000	0.000	N 00-00'00"E
WONEWOC	0.000	0.000	N 00-00'00"E
11SET	0.101	0.062	N 04-32'17"E

Relative 1:20,000 Error and Specification Tolerances

Sta.	Sta.	Dist.	Actual Semi Major	Allowable Semi Major	Ratio Actual/Allowable	Semi Minor	Max. Err. Az.
11SET	DILLY	28993.60	0.10	1.45	0.07	0.06	N 04-32'17"E
11SET	GREENWOOD	6371.66	0.10	0.32	0.32	0.06	N 04-32'17"E
11SET	HILLS	13493.45	0.10	0.67	0.15	0.06	N 04-32'17"E
11SET	WONEWOC	16924.54	0.10	0.85	0.12	0.06	N 04-32'17"E

Adjusted Observations

Adjusted Distances					
From Sta.	To Sta.	Distance	Residual	StdRes.	StdDev
1002	11SET	18.07	0.00	0.0	0.02
	Root Mean Square (RMS)		0.00		

Adjusted Angles						
BS Sta.	Occ. Sta.	FS Sta.	Angle	Residual	StdRes	StdDev (Sec.)
1003	1002	11SET	251-09'08"	00	0.0	204
	Root Mean Square (RMS)			00		

SURVEYOR'S CERTIFICATE: (D) AGENT(S) PERFORMING GPS OBSERVATION & COORDINATE COMPUTATION

I, MATTHEW M FILUS, WISCONSIN REGISTERED LAND SURVEYOR NUMBER 2185, HEREBY CERTIFY THAT THE COORDINATES PROVIDED ON THIS RECORD WERE DETERMINED BY ME OR UNDER MY DIRECTION AND CONTROL AND THAT THIS COORDINATE SUBMISSION FORM IS CORRECT AND COMPLETE TO THE BEST OF MY KNOWLEDGE AND BELIEF.



[Handwritten Signature]

9/1/2011

THE EXCELSIOR GROUP, LLC
 MATTHEW M FILUS, WISCONSIN REGISTERED LAND SURVEYOR S-2185

DATE CERTIFIED