

## VERNON COUNTY CERTIFIED U.S. PUBLIC LAND SURVEY MONUMENT RECORD

INSTRUCTIONS: THIS RECORD SHALL SHOW THE LOCATION OF THE CORNER AND SHALL INCLUDE ALL OF THE FOLLOWING ELEMENTS (A-I)

*FOUND BRASS VERNON Co. LUNDE MONUMENT AT SECTION CORNER*

(A) IDENTIFY THE CORNER BY REFERENCE TO THE U.S. PUBLIC LAND SURVEY SYSTEM

*BRASS MONUMENT IS FIXED ATOP A 5' LONG 2" DIA. PIPE AND LIES ± 1.5' ABOVE GRADE OF CATTAIL MARSH.*

■ = CORNER MONUMENT RESTORED

WITNESSES TO CORNER LOCATION:

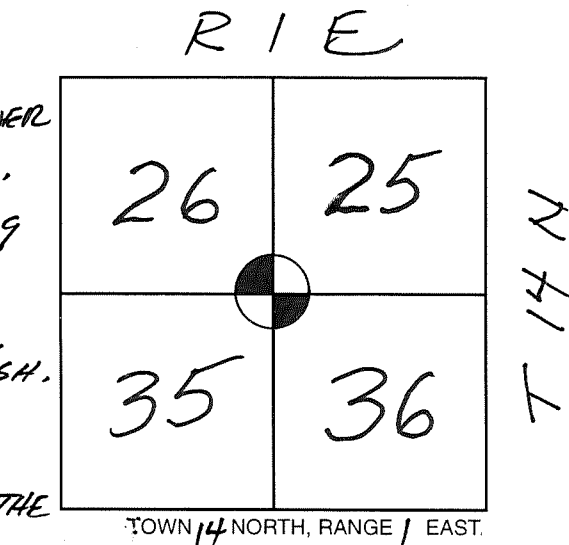
- 1)
- 2)
- 3)

STATE PLANE COORDINATES (WISCONSIN SOUTH ZONE)

NORTHING: *THESE COORDINATES COMPLY WITH THE SURVEY GRADE SPEC.*  
EASTING: *"*

VERNON COUNTY COORDINATES *N 185461.02*

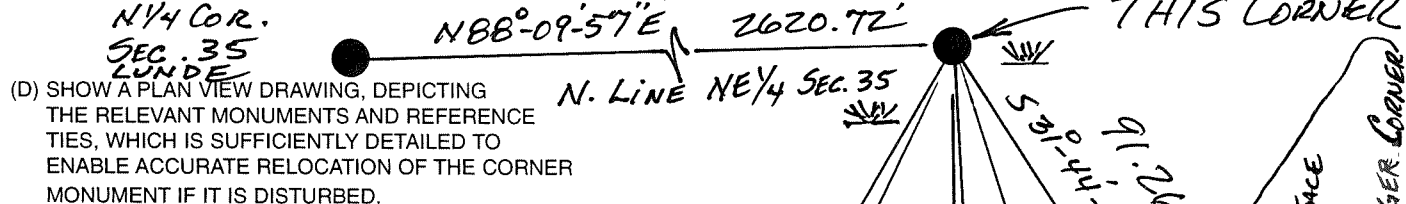
NORTHING: *E 849279.86*  
EASTING: *"*



(B) DESCRIBE ANY RECORD EVIDENCE, MONUMENT EVIDENCE, OCCUPATIONAL EVIDENCE, TESTIMONIAL EVIDENCE OR ANY OTHER MATERIAL EVIDENCE YOU CONSIDERED, AND WHETHER THE MONUMENT WAS FOUND OR PLACED.

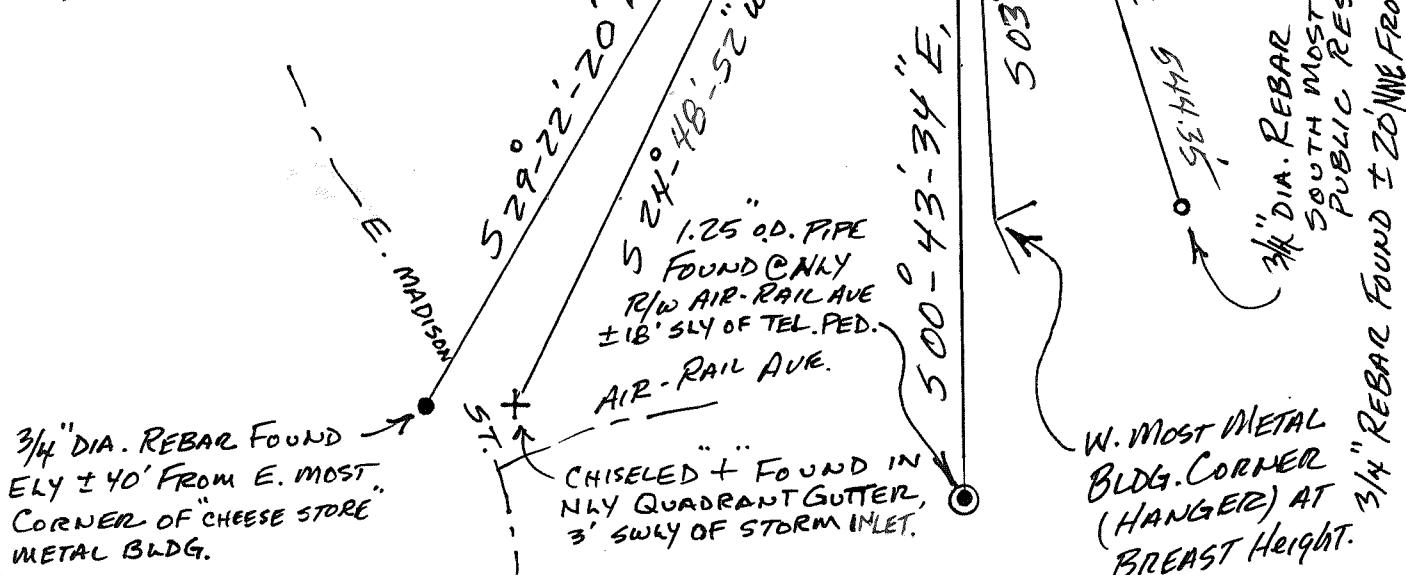
*HONORED EXISTING FOUND CORNER MONUMENT & TIE SHEET BY E. CURTIS CROOK DATED 12-15-97.*

(C) IN THE PLAN VIEW DRAWING BELOW, PROVIDE REFERENCE TIES TO AT LEAST 4 WITNESS MONUMENTS OR, IF THE LOCATION IS WITHIN A MUNICIPALITY, TO AT LEAST 2 WITNESS MONUMENTS. (WITNESS MONUMENTS SHALL BE MADE OF CONCRETE, NATURAL STONE, IRON, OR OTHER EQUALLY DURABLE MATERIAL.) DESCRIBE WITNESS MONUMENTS.



ALL BEARINGS WICRS VERNON Co.  
NAD 83 (2011)

*GOVT. SIGN SET S20°E, ± 53' FROM CORNER AND IT'S 5' TALL, 2" O.D. GUARD PIPE.*



(E) DESCRIBE ANY MATERIAL DISCREPANCY BETWEEN THE LOCATION OF THE CORNER AS RESTORED OR REESTABLISHED AND THE LOCATION OF THAT CORNER AS PREVIOUSLY RESTORED OR REESTABLISHED BY DISTANCE AND DIRECTION. SHOW THE DISCREPANCY ON THE PLAN VIEW DRAWING UNDER (D), ABOVE. SHOW THE DISTANCES BETWEEN THE CORNER AS PREVIOUSLY RESTORED OR REESTABLISHED AND (1) THE CORNER AS RESTORED OR REESTABLISHED, AND (2) TO AT LEAST 2 OF THE WITNESS MONUMENTS AS SHOWN ON THE DRAWING IN (D), ABOVE.

*NONE.*

(F) WAS THE CORNER RESTORED THROUGH ACCEPTANCE OF (1) AN OBLITERATED EVIDENCE LOCATION, OR (2) A FOUND PERPETUATED LOCATION?

*(2)*

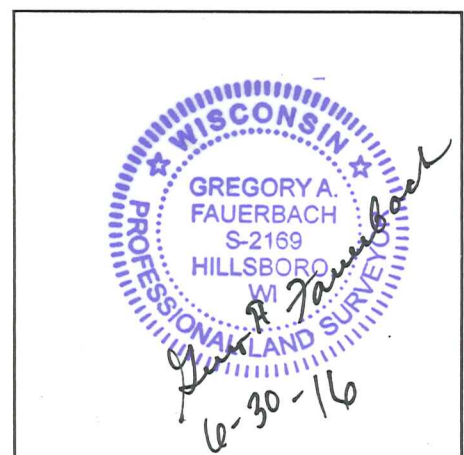
(G & H) WAS THE CORNER REESTABLISHED THROUGH LOST CORNER PROPORTIONATE METHODS? IF SO SHOW THE METHOD, INCLUDING THE DIRECTION AND DISTANCES TO OTHER PUBLIC LAND SURVEY CORNERS USED AS EVIDENCE OR USED FOR PROPORTIONING IN DETERMINING THE CORNER LOCATION.

*No.*

(I) I, *GREG FAUERBACH* CERTIFY THAT THE LOCATION SHOWN ON THIS RECORD WAS DETERMINED BY ME OR UNDER MY DIRECTION AND CONTROL AND THAT THIS U.S. PUBLIC LAND SURVEY MONUMENT RECORD IS CORRECT AND COMPLETE TO THE BEST OF MY KNOWLEDGE AND BELIEF.

*6-30-16* *Greg A. Fauebach*  
SIGNATURE DATE

AFFIX LAND SURVEYOR SEAL



52516

DEC 17 1997

CERTIFIED LAND CORNER

STATE OF WISCONSIN )  
COUNTY OF VERNON ) S.S.

CERTIFICATE

I, F. CURTIS CROOK, do hereby certify that on the 11th day of DECEMBER 1997, I found (evidence) (~~no evidence~~) of the NW corner of SECTION 36, T 14 N, R 1 E, Fourth Principal Meridian, and I re-established said corner according to the Wisconsin Statutes as shown and described hereon.

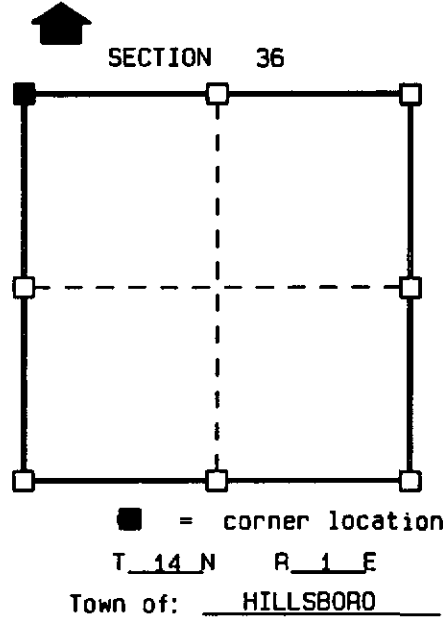
Dated this 15th day of Dec 1997

F. CURTIS CROOK R.L.S. S-1292

Title



Seal



History of original corner establishment:

ORIGINAL CORNER ESTABLISHED BY JAMES M. MARSH IN 1845.  
JOHN A BRENEMAN SET A 1-1/4" IRON BAR AT THE CORNER IN 1978. (C.S.M. V.1, P.65)  
BRENEMAN ALSO PREPARED A TIE SHEET FOR THE BAR SET.  
NUMEROUS SURVEYS OF RECORD ARE TIED TO BRENEMAN'S 1-1/4" IRON BAR.

Description of corner evidence found:

FOUND AND ACCEPTED LOCATION OF BRENEMAN'S 1-1/4" IRON BAR.  
REPLACED SAID IRON BAR WITH A 1-1/2" (2" o.d.) X 5' IRON PIPE FITTED WITH THE BRASS CAP FROM A VERNON COUNTY -LUNDE- MONUMENT.  
RELOCATED EXISTING & MADE NEW TIES - SEE SKETCH BELOW.

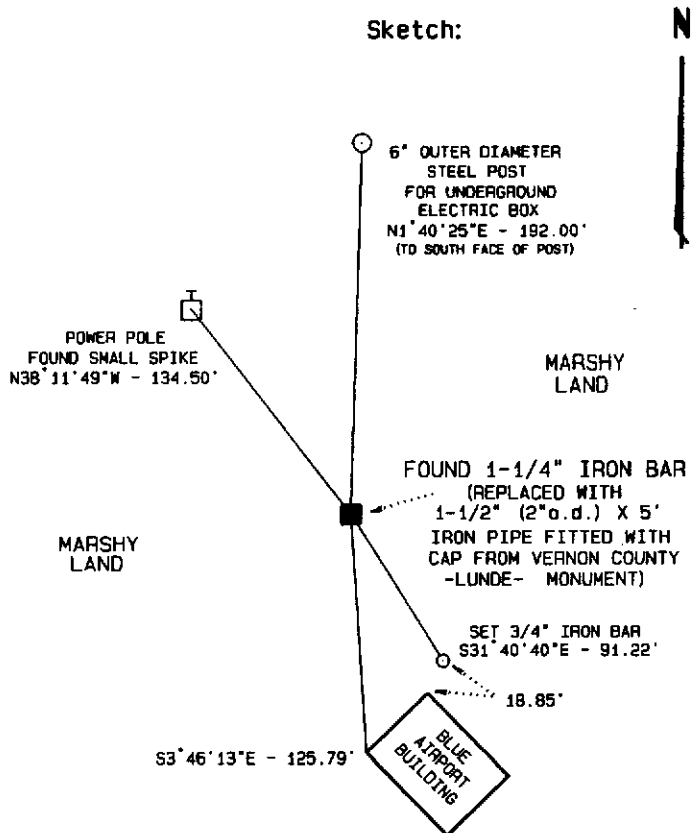
Description of corner and witness monuments, references and accessories used to perpetuate the original or re-established location of this corner:

Witnesses to corner location:

F. CURTIS CROOK  
CHAD CROOK  
MIKE EWING

NOTES:  
DRAWING IS NOT TO SCALE.  
BEARINGS ARE REFERENCED TO PROJECT.  
SET SURVEY MARKER SIGN NEAR MONUMENT.

(THIS CORNER SET AS PART OF  
VERNON COUNTY'S 1997  
REMONUMENTATION PROJECT.)

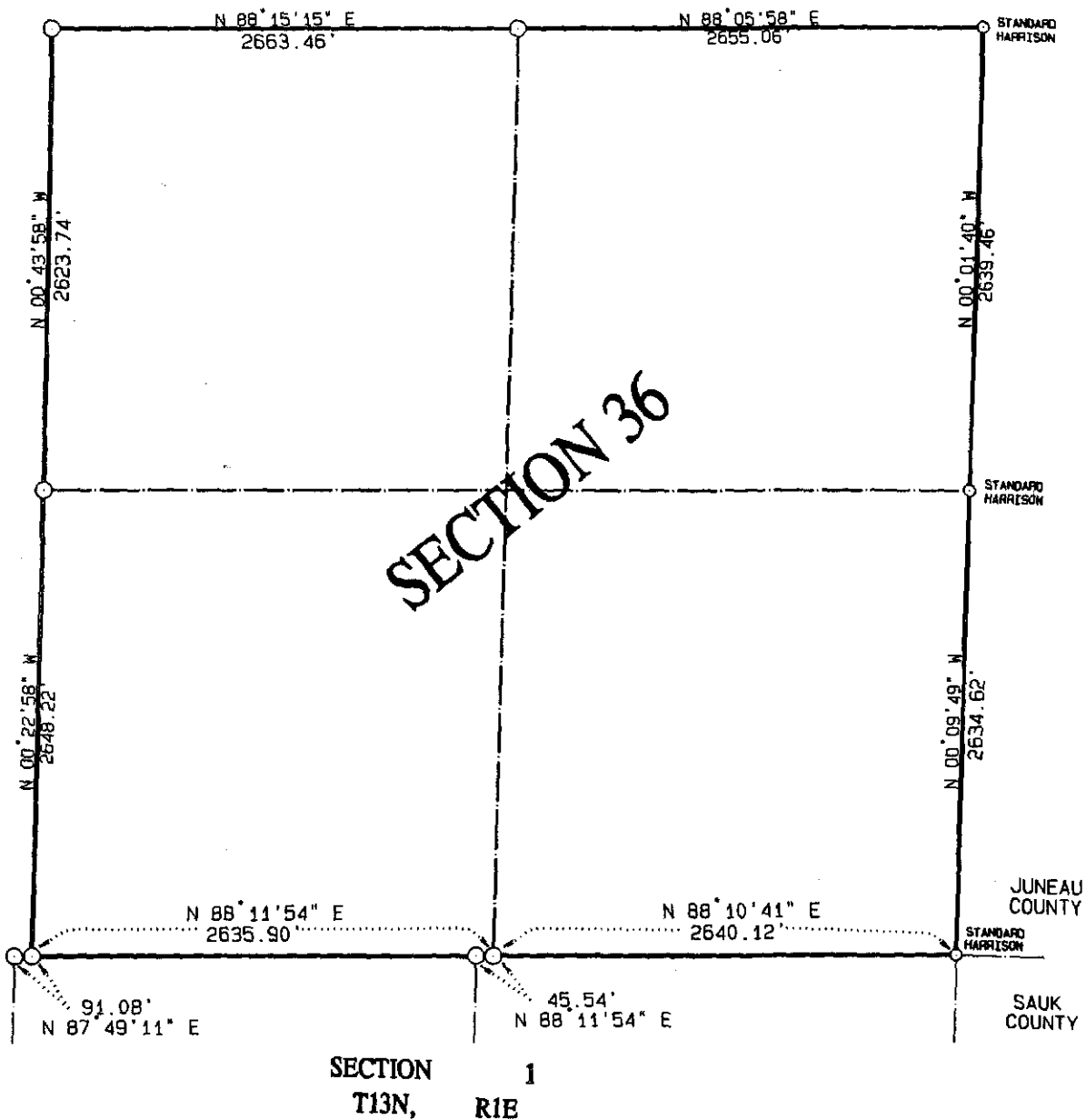


VERNON COUNTY COORDINATES

North (Y)	East (X)
185460.944	849280.161

DATA SHEET

SECTION 36, T14N, R1E  
TOWN OF HILLSBORO, VERNON COUNTY



NOTE: ALL CORNERS (WITH EXCEPTION OF THOSE NOTED)  
ARE VERNON COUNTY MONUMENTS.

THIS DATA SHEET PREPARED AS PART OF  
VERNON COUNTY'S 1997 REMONUMENTATION PROJECT.