

JUNEAU COUNTY SURVEY MONUMENT RECORD

CORNER NO. 94
SECTION 30
TOWN 14N.
RANGE 2E.

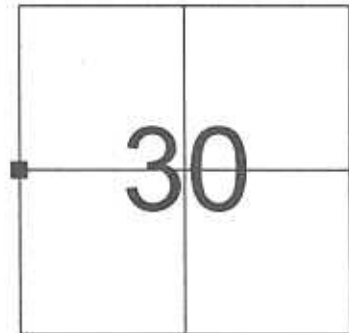
TYPE OF MONUMENT: STANDARD HARRISON MONUMENT

JUNEAU COUNTY COORDINATES
NORTHING: 108,070.56
EASTING: 400,281.04

■ = CORNER MONUMENT RESTORED

BASIS FOR MONUMENT LOCATION
(USE REVERSE SIDE IF NECESSARY)

SHOW INFO SUCH AS: HISTORY OF CORNER, WITH REFERENCE TO VOLUME AND PAGE DATES, SURVEYOR; EXACT DESCRIPTION OF MONUMENT PLACED OR FOUND, IF LOCATION COMPUTED, BY TAPED OR EDM TRAVERSE; LANDOWNER REMARKS, ETC.

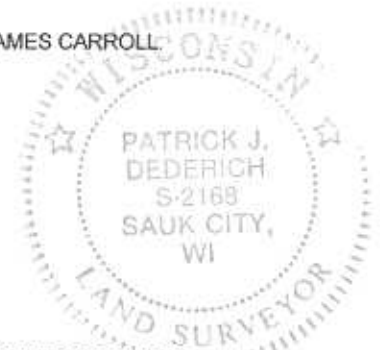


LOCATION

STANDARD HARRISON MONUMENT FOUND AS PER TIE SHEET DATED 2/16/1988 BY JAMES CARROLL

LEGEND

- = HARRISON MONUMENT FOUND
- = 3/4" X 24" IRON ROD SET
- () = PREVIOUSLY RECORDED AS

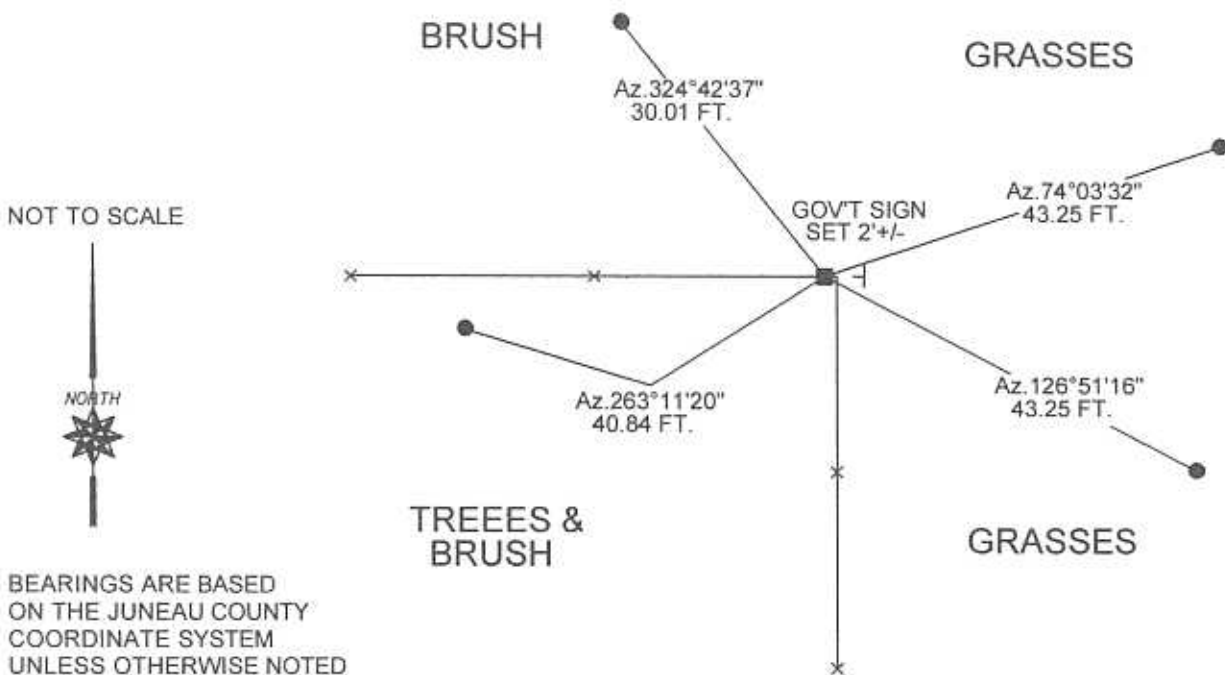


CERTIFIED CORRECT

Patrick J. Dederich
REGISTERED LAND SURVEYOR

DATE 6/18/2004

TIE SKETCH
(SHOW AT LEAST FOUR TIES)



DEC 17 1997

CERTIFICATE OF SECTION CORNER MAINTENANCE

EAST 1/4 CORNER OF SECTION 25

T 14 N, R 1 E

I, F. Curtis Crook, do hereby certify that during the 1st quarter of 1997 I visited the above listed section corner for which there is a tie sheet on file at the Juneau County Court House (copy attached hereto) and that I found the monument as shown on said tie sheet to be existing and in good condition with existing ties as shown on said tie sheet.

Monument Type = Standard Harrison

I further certify that, as part of Vernon County's 1997 remonumentation project along the East county line, I have established the following Vernon County Coordinates on said section corner monument.

VERNON COUNTY COORDINATES (in survey feet)

North - 188258.967

East - 854582.245



41

JUNEAU COUNTY

Survey Monument Record

TYPE OF MONUMENT: HARRISON

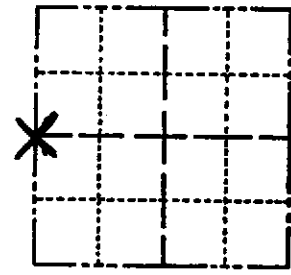
STATE PLANE COORDINATES: N _____
E _____

ELEVATION — M.S.L. DATUM: _____

THETA ANGLE: _____

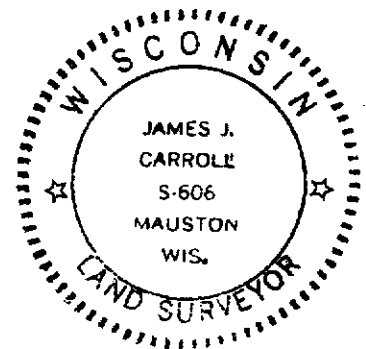
FIELD BOOK: _____ PAGE _____

CORNER NO. 94
SECTION 30
TOWN 14 N.
RANGE 2 E.



LOCATION
(Indicated by 'X')

SEAL:



BASIS FOR MONUMENT LOCATION

(Use reverse side if necessary)

Show info such as: History of corner, with reference to Vol. and pg, dates, surveyor; exact description of monument replaced; if location computed, by taped or EDM traverse; landowner remarks, etc.

REPLACED SPIKE @ FENCE
CORNER

Accepted as the true
location for this corner

CERTIFIED CORRECT:

James J. Carroll
Registered Land Surveyor
DATE: 2/16/1988

TIE SKETCH

(Show at least four ties)

