

DEC 17 1997

CERTIFIED LAND CORNER

STATE OF WISCONSIN )  
COUNTY OF VERNON ) S.S.

CERTIFICATE

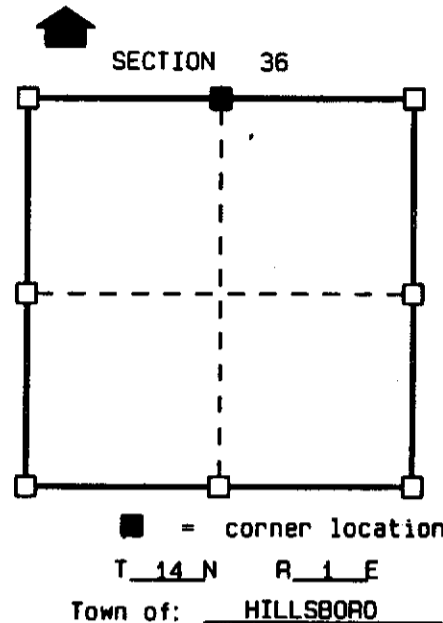
I, F. CURTIS CROOK, do hereby certify that on the 22nd day of NOVEMBER 1997, I found (evidence) ~~(no evidence)~~ of the N 1/4 corner of SECTION 36, T 14 N, R 1 E, Fourth Principal Meridian, and I re-established said corner according to the Wisconsin Statutes as shown and described hereon.

Dated this 15th day of Dec 1997

F. CURTIS CROOK R.L.S. S-1292



Seal



History of original corner establishment:

ORIGINAL CORNER ESTABLISHED BY JAMES M. MARSH IN 1845. IN 1894, C.M. STERLING MADE ONE NEW TIE FOR THE CORNER & MADE REFERENCE TO A WITNESS POST. JAMES M. CARROLL REFERS TO A SPIKE NAIL FOUND AT CORNER ON C.S.M. V.1, P.208.

Description of corner evidence found:

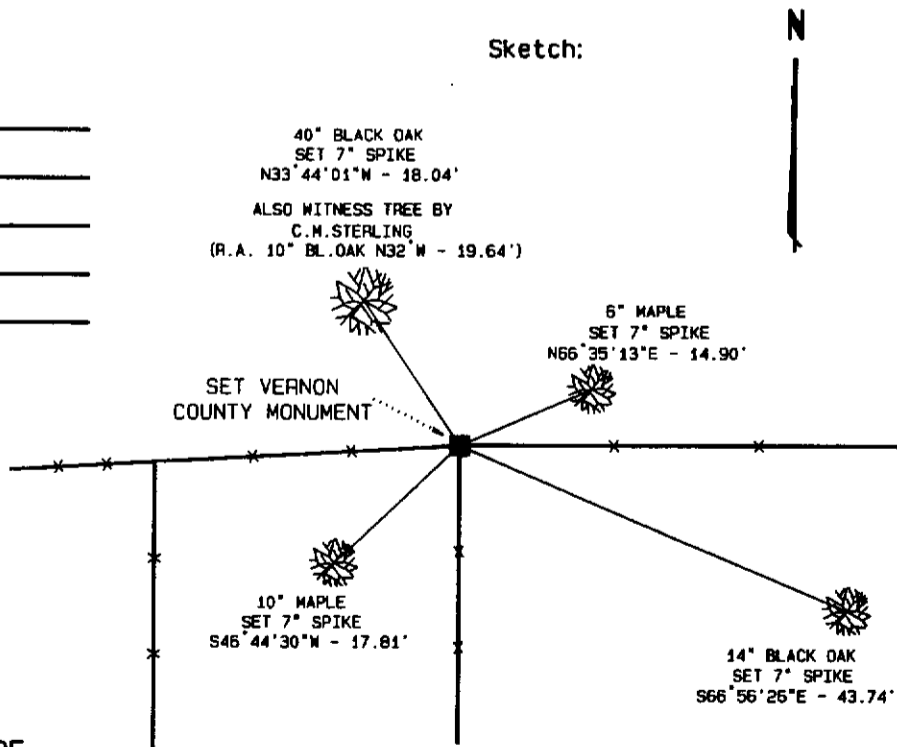
FOUND STERLING'S TIE (R.A. 10" BLACK OAK) WHICH IS NOW A 40" BLACK OAK. DID NOT FIND SPIKE NAIL MENTIONED ABOVE. DETERMINED CORNER LOCATION USING THE BLACK OAK. SAID LOCATION MATCHED THE OCCUPIED CORNER. THE DISTANCE FROM THE NW CORNER OF SECTION 36 TO THE N 1/4 CORNER AS DETERMINED ABOVE MATCHES THAT MEASURED BY STERLING WITHIN 0.3'±. SET VERNON COUNTY MONUMENT AND MADE TIES AS SHOWN BELOW.

Description of corner and witness monuments, references and accessories used to perpetuate the original or re-established location of this corner:

Witnesses to corner location:

F. CURTIS CROOK  
CHAD CROOK  
WADE CROOK

Sketch:



NOTES:  
DRAWING IS NOT TO SCALE.  
BEARINGS ARE REFERENCED TO PROJECT.  
VERNON COUNTY MONUMENTS ARE LUNDE MONUMENTS.  
SET SURVEY MARKER SIGN NEAR MONUMENT.

(THIS CORNER SET AS PART OF VERNON COUNTY'S 1997 REMONUMENTATION PROJECT.)

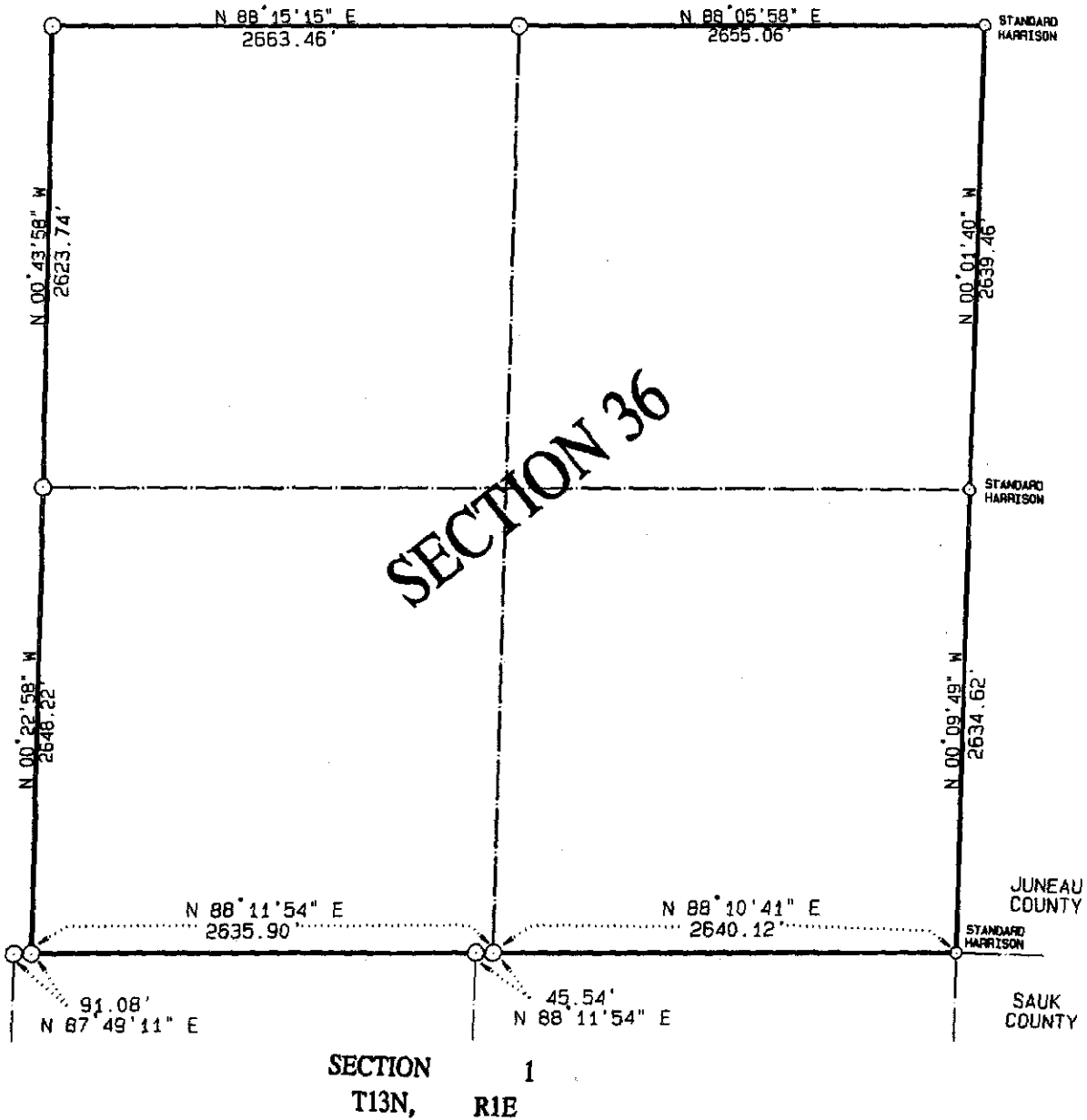
VERNON COUNTY COORDINATES

North (Y)	East (X)
185542.086	851942.390

49

DATA SHEET

SECTION 36, T14N, R1E  
TOWN OF HILLSBORO, VERNON COUNTY



NOTE: ALL CORNERS (WITH EXCEPTION OF THOSE NOTED)  
ARE VERNON COUNTY MONUMENTS.

THIS DATA SHEET PREPARED AS PART OF  
VERNON COUNTY'S 1997 REMONUMENTATION PROJECT.