

JUNEAU COUNTY SURVEY MONUMENT RECORD

CORNER NO. 101
SECTION 31
TOWN 14N.
RANGE 2E.

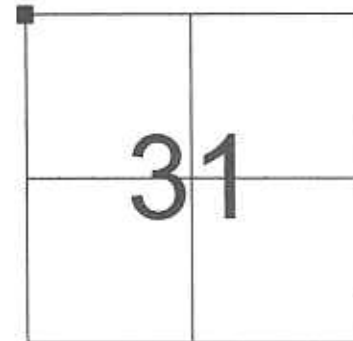
TYPE OF MONUMENT: STANDARD HARRISON MONUMENT

JUNEAU COUNTY COORDINATES
NORTHING: 105,441.46
EASTING: 400,269.91

■ = CORNER MONUMENT RESTORED

BASIS FOR MONUMENT LOCATION
(USE REVERSE SIDE IF NECESSARY)

SHOW INFO SUCH AS: HISTORY OF CORNER, WITH REFERENCE TO VOLUME AND PAGE DATES, SURVEYOR; EXACT DESCRIPTION OF MONUMENT PLACED OR FOUND, IF LOCATION COMPUTED, BY TAPED OR EDM TRAVERSE; LANDOWNER REMARKS, ETC.

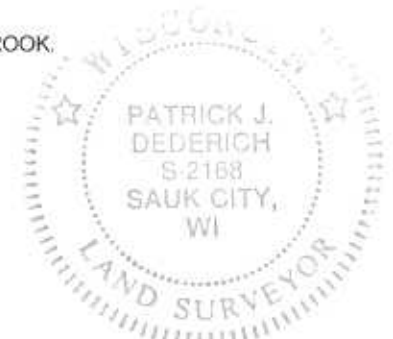


LOCATION

HARRISON MONUMENT FOUND AS PER TIE SHEET DATED 12/15/1997 BY F. CURTIS CROOK.

LEGEND

- = HARRISON MONUMENT FOUND 16" DEEP
- = 3/4" X 24" IRON ROD SET
- = 3/4" DIAMETER IRON ROD FOUND
- () = PREVIOUSLY RECORDED AS

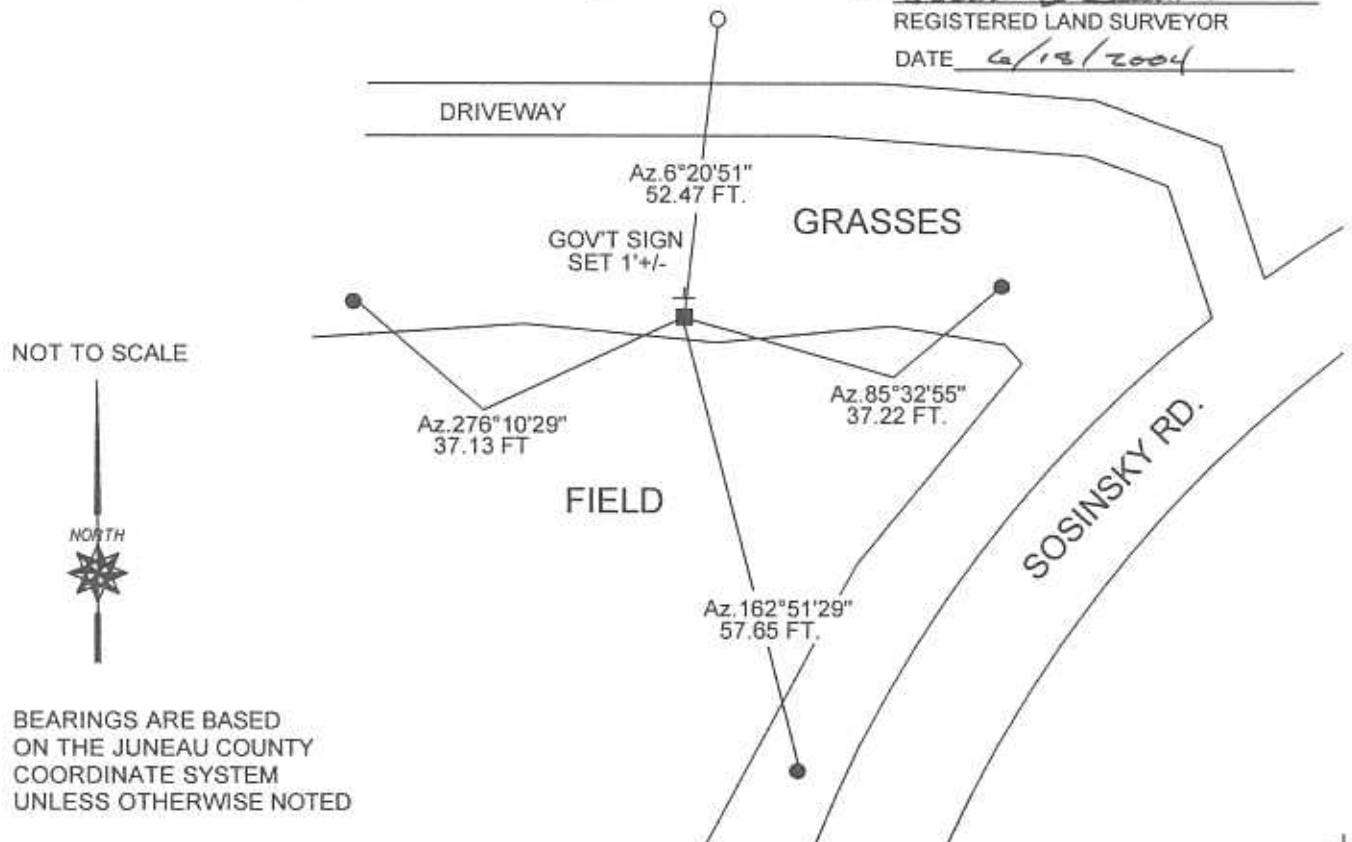


CERTIFIED CORRECT

Patrick J. Dederich
REGISTERED LAND SURVEYOR

DATE 6/13/2004

TIE SKETCH
(SHOW AT LEAST FOUR TIES)

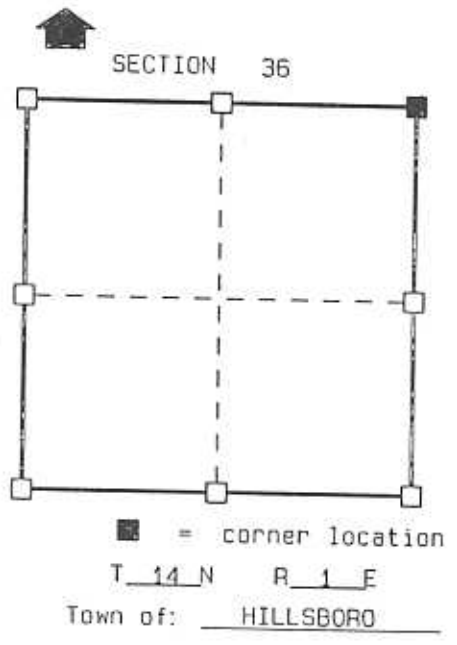


CERTIFIED LAND CORNER

STATE OF WISCONSIN)
COUNTY OF VERNON) S.S.

CERTIFICATE

I, F. CURTIS CROOK, do hereby certify
that on the 17th day of NOVEMBER 1997,
I found (evidence) (~~no evidence~~) of the NE
corner of SECTION 36, T 14 N, R 1 E,
Fourth Principal Meridian, and I re-established
said corner according to the Wisconsin Statutes
as shown and described hereon.
Dated this 15th day of Dec 1997
F. CURTIS CROOK R.L.S. S-1292



Seal

History of original corner establishment:

ORIGINAL CORNER ESTABLISHED BY J.E. WHITCHER IN 1845.
CORNER VISITED BY JOHN T. PATTERSON IN 1911 - JUNEAU COUNTY SURVEY RECORDS.

Description of corner evidence found:

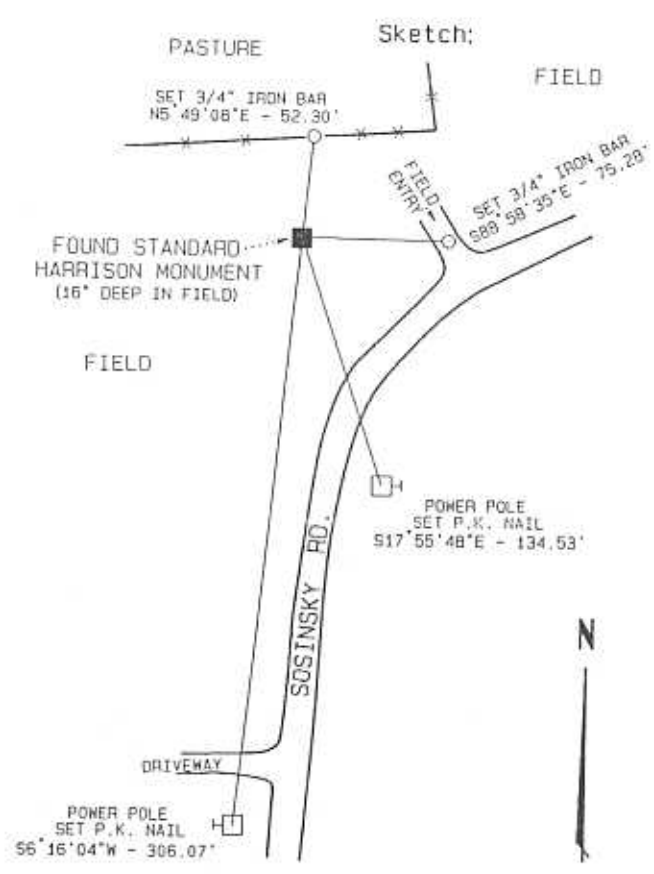
DURING INITIAL TRAVERSE AND COLLECTION OF INFORMATION IN SECTIONS 25 & 36, NO EVIDENCE OF THIS CORNER WAS FOUND. AFTER REVIEWING INFORMATION COLLECTED DURING THE INITIAL TRAVERSE, A RETURN TRIP WAS MADE TO SEARCH A MORE NARROWED AREA. THE SECOND SEARCH OF THIS AREA UNCOVERED A STANDARD HARRISON MONUMENT 16" BELOW THE SURFACE AS SHOWN BELOW. ALTHOUGH NO RECORD OF THIS MONUMENT EXISTED, ITS POSITION DID MATCH WELL WITH ORIGINAL GOVERNMENT SURVEY DISTANCES. ACCEPTED LOCATION OF MONUMENT AND MADE TIES AS SHOWN BELOW.

Description of corner and witness monuments, references and accessories used to perpetuate the original or re-established location of this corner:

Witnesses to corner location:

CHAD CROOK
BRENT EWING

NOTES:
DRAWING IS NOT TO SCALE.
BEARINGS ARE REFERENCED TO PROJECT.
SET SURVEY MARKER SIGN IN AREA.



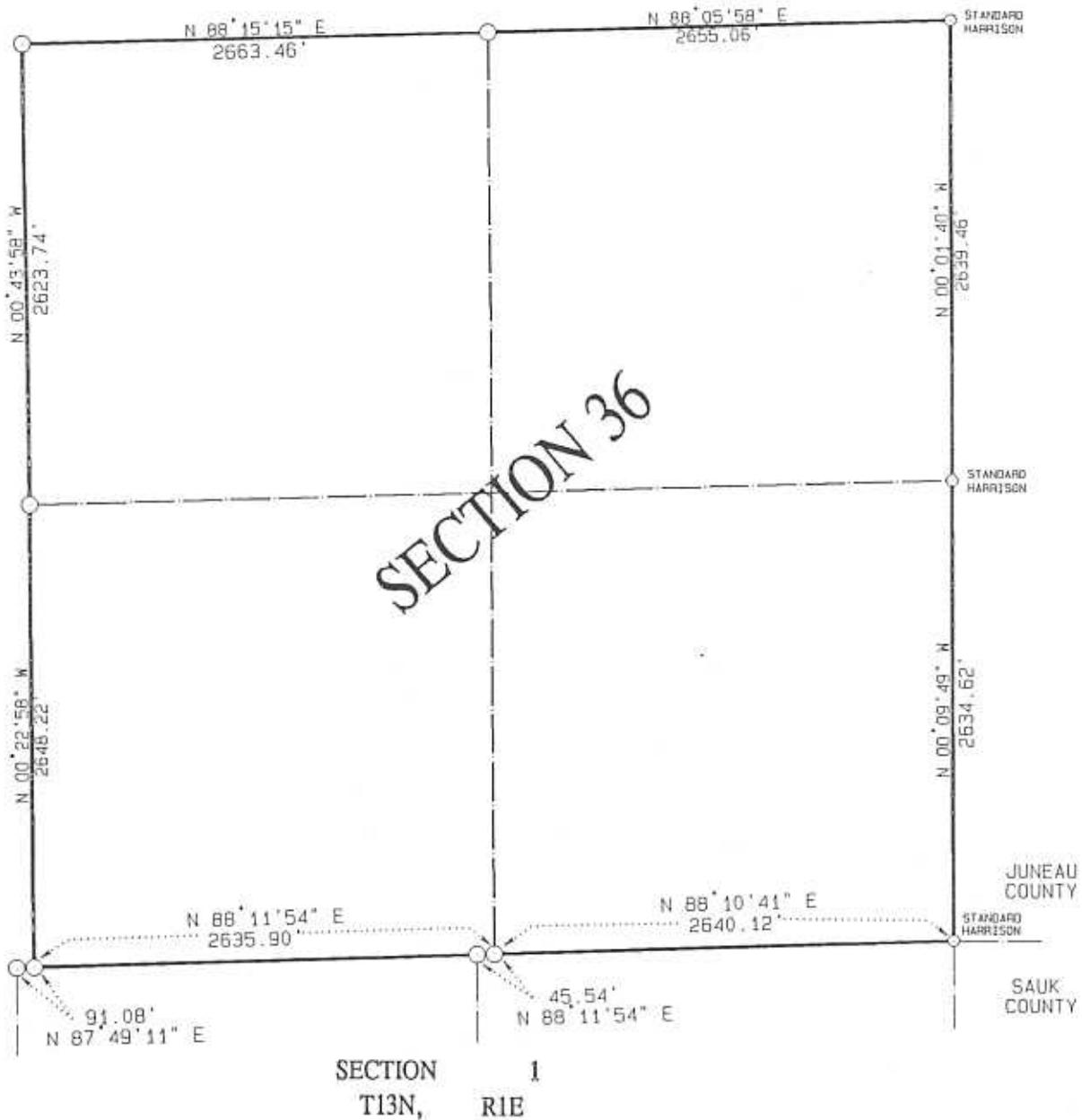
(THIS CORNER TIED AS PART OF
VERNON COUNTY'S 1997
REMONUMENTATION PROJECT.)

VERNON COUNTY COORDINATES

North (Y)	East (X)
185630.138	854595.987

DATA SHEET

SECTION 36, T14N, R1E
TOWN OF HILLSBORO, VERNON COUNTY



NOTE: ALL CORNERS (WITH EXCEPTION OF THOSE NOTED)
ARE VERNON COUNTY MONUMENTS.

THIS DATA SHEET PREPARED AS PART OF
VERNON COUNTY'S 1997 REMONUMENTATION PROJECT.