

FOR VERNON COUNTY, WISCONSIN

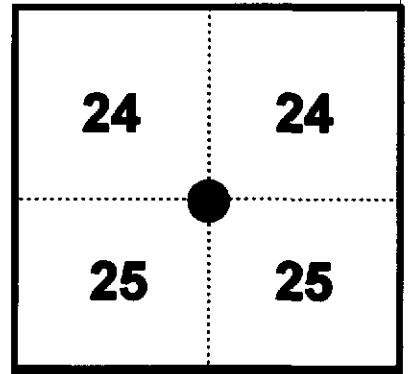
Note: This form is intended and designed to fulfill all requirements of Wisconsin Administrative Code, Chapter AE-7.08, U.S. Public Land Survey Monument Record (3)(a)(b)(c)(d)(e)(f)(g)(h)(i). Use additional sheets if necessary.

(a) The One Quarter corner common to Sections 24,25

Township(s) 14 North, Range(s) 1 East.

Vernon County Coordinates: N 190821.602

Datum: _____ E 851908.018

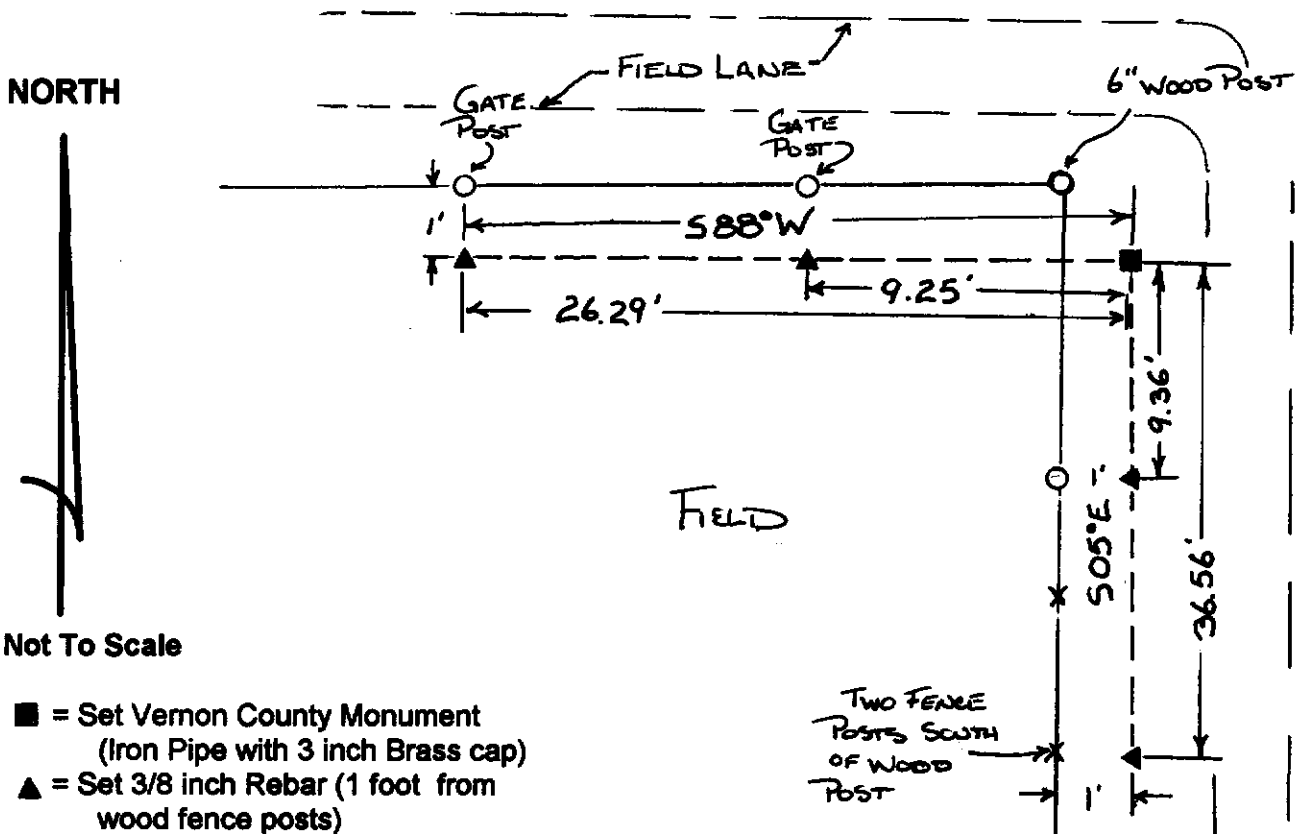


(b)(f)(h) Description of monument found at this corner and if it was accepted, state all evidence (material, testimonial, occupational, plats records, other monuments) used as a basis for accepting. If not accepted or nothing was found, state evidence used as basis for establishing location and what was set. If re-established through lost corner proportionate methods, indicate all monuments, distances and directions used.

12-25-1851- Original corner established by J. E. Davidson 40.45 chains East of Southwest corner of Section 24

11-06-98 Found 1" Iron Pipe set by James J. Carol (as per landowner report) Held as corner location. Set Vernon County Monument and Witness monuments as shown.

(c)(d)(e) Plan view of corner with ties to at least four (4) witness monuments. If in disagreement with previously established corner, show the distances between the two corners and also indicate ties to disputed corner.



Not To Scale

- = Set Vernon County Monument (Iron Pipe with 3 inch Brass cap)
- ▲ = Set 3/8 inch Rebar (1 foot from wood fence posts)

TWO FENCE POSTS SOUTH OF WOOD POST

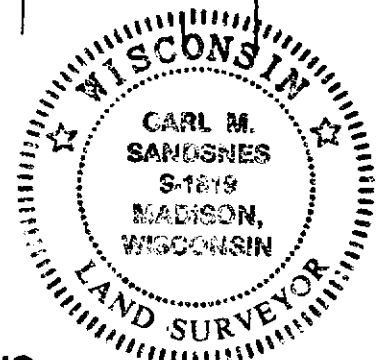
(i) Certify that the corner location on this record was determined by me or under my direction and control and that this U.S. Public Land survey Monument Record is correct and complete to the best of my knowledge and belief.

[Handwritten Signature]

 Signature

12/22/98

 Date



Filed for record in Vernon County Surveyor's Office on _____ INDEX NO. _____