

VERNON COUNTY CERTIFIED U.S. PUBLIC LAND SURVEY MONUMENT RECORD

INSTRUCTIONS: THIS RECORD SHALL SHOW THE LOCATION OF THE CORNER AND SHALL INCLUDE ALL OF THE FOLLOWING ELEMENTS (A-I)

(A) IDENTIFY THE CORNER BY REFERENCE TO THE U.S. PUBLIC LAND SURVEY SYSTEM

■ = CORNER MONUMENT RESTORED

WITNESSES TO CORNER LOCATION:

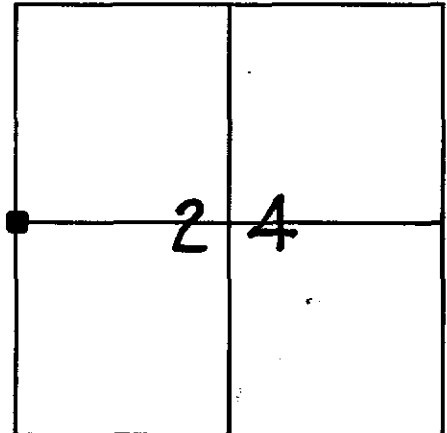
- 1) MARK C. CARLSON
- 2)
- 3)

STATE PLANE COORDINATES (WISCONSIN SOUTH ZONE)

NORTHING:
EASTING:

VERNON COUNTY COORDINATES

NORTHING: 193359.666
EASTING: 849258.304



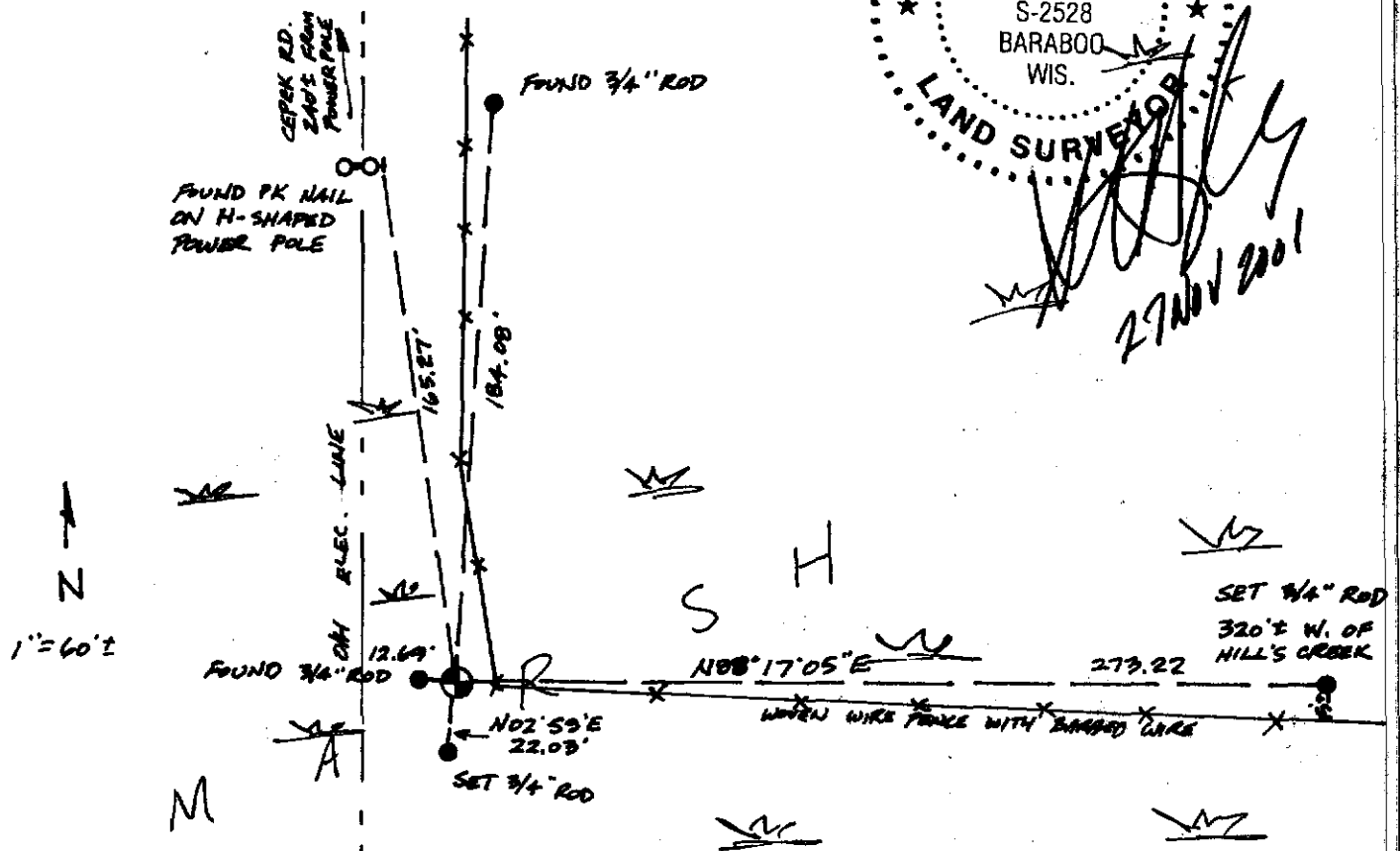
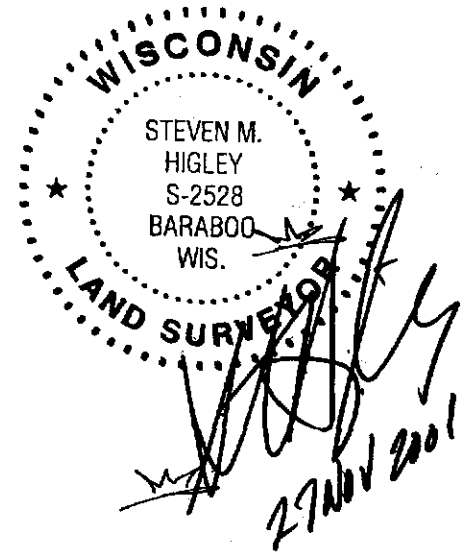
SECTION 24, TOWN 14 NORTH, RANGE 1 EAST/WEST
(24-14-1E)

(B) DESCRIBE ANY RECORD EVIDENCE, MONUMENT EVIDENCE, OCCUPATIONAL EVIDENCE, TESTIMONIAL EVIDENCE OR ANY OTHER MATERIAL EVIDENCE YOU CONSIDERED, AND WHETHER THE MONUMENT WAS FOUND OR PLACED.

- 1845 - COR. EST. BY J.M. MARSH
- 1997 - F.C. CROOK SET LUNDE MON. ON BASIS OF OCCUPATION AND FIT WITH NW COR. OF SEC. 24 & "40" LINE TO SOUTH OF THIS COR.
- 1998 - C.M. SANDNES CALLS FOR 2" PIPE & CLAIMS TO HAVE REPLACED WITH LUNDE MON., HOWEVER HIS TIE SHEET BEARS NO RESEMBLANCE TO THIS LOCATION
- 2001 - G.A. FAURBACH CALLS FOR ALUMINUM MON. (CSM #245)
- 2001 - FD. & ACCEPTED MON.; MADE NEW TIE SIGN

(C) IN THE PLAN VIEW DRAWING BELOW, PROVIDE REFERENCE TIES TO AT LEAST 4 WITNESS MONUMENTS OR, IF THE LOCATION IS WITHIN A MUNICIPALITY, TO AT LEAST 2 WITNESS MONUMENTS. (WITNESS MONUMENTS SHALL BE MADE OF CONCRETE, NATURAL STONE, IRON, OR OTHER EQUALLY DURABLE MATERIAL.) DESCRIBE WITNESS MONUMENTS.

(D) SHOW A PLAN VIEW DRAWING, DEPICTING THE RELEVANT MONUMENTS AND REFERENCE TIES, WHICH IS SUFFICIENTLY DETAILED TO ENABLE ACCURATE RELOCATION OF THE CORNER MONUMENT IF IT IS DISTURBED.



(E) DESCRIBE ANY MATERIAL DISCREPANCY BETWEEN THE LOCATION OF THE CORNER AS RESTORED OR REESTABLISHED AND THE LOCATION OF THAT CORNER AS PREVIOUSLY RESTORED OR REESTABLISHED BY DISTANCE AND DIRECTION. SHOW THE DISCREPANCY ON THE PLAN VIEW DRAWING UNDER (D), ABOVE. SHOW THE DISTANCES BETWEEN THE CORNER AS PREVIOUSLY RESTORED OR REESTABLISHED AND (1) THE CORNER AS RESTORED OR REESTABLISHED, AND (2) TO AT LEAST 2 OF THE WITNESS MONUMENTS AS SHOWN ON THE DRAWING IN (D), ABOVE.

N/A

(F) WAS THE CORNER RESTORED THROUGH ACCEPTANCE OF (1) AN OBLITERATED EVIDENCE LOCATION, OR (2) A FOUND PERPETUATED LOCATION?

N/A

(G & H) WAS THE CORNER REESTABLISHED THROUGH LOST CORNER PROPORTIONATE METHODS? IF SO SHOW THE METHOD, INCLUDING THE DIRECTION AND DISTANCES TO OTHER PUBLIC LAND SURVEY CORNERS USED AS EVIDENCE OR USED FOR PROPORTIONING IN DETERMINING THE CORNER LOCATION.

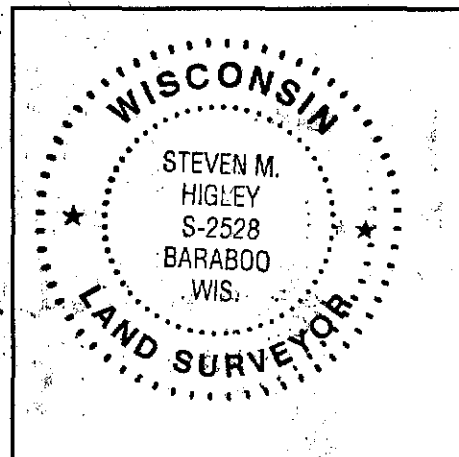
N/A

AFFIX LAND SURVEYOR SEAL

(I) I, STEVEN M. HIGLEY CERTIFY THAT THE LOCATION SHOWN ON THIS RECORD WAS DETERMINED BY ME OR UNDER MY DIRECTION AND CONTROL AND THAT THIS U.S. PUBLIC LAND SURVEY MONUMENT RECORD IS CORRECT AND COMPLETE TO THE BEST OF MY KNOWLEDGE AND BELIEF.

SIGNATURE

DATE



FOR VERNON COUNTY, WISCONSIN

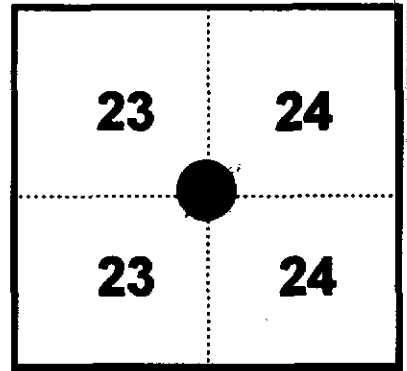
Note: This form is intended and designed to fulfill all requirements of Wisconsin Administrative Code, Chapter AE-7.08, U.S. Public Land Survey Monument Record (3)(a)(b)(c)(d)(e)(f)(g)(h)(i). Use additional sheets if necessary.

(a) The One Quarter corner common to Sections 23,24

Township(s) 14 North, Range(s) 1 East.

Vernon County Coordinates: N 193359.658

Datum: _____ E 849258.372

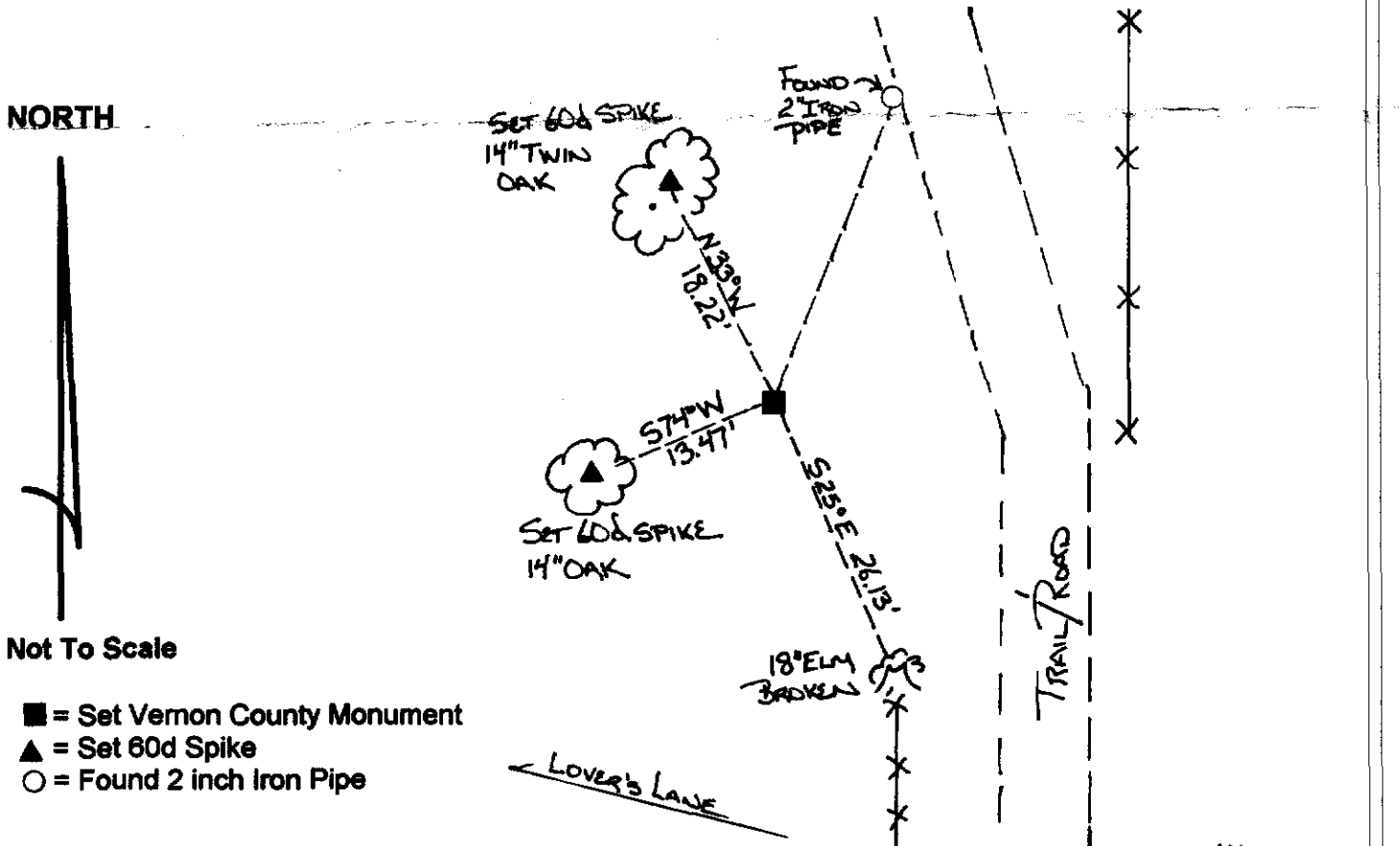


(b)(f)(h) Description of monument found at this corner and if it was accepted, state all evidence (material, testimonial, occupational, plats records, other monuments) used as a basis for accepting. If not accepted or nothing was found, state evidence used as basis for establishing location and what was set. If re-established through lost corner proportionate methods, indicate all monuments, distances and directions used.

1845 - J. E. Davidson established original corner location 40.00 chains from the Southwest corner of Sec. 12 (equal distant split)

11-11-98- Found 2 inch Iron Pipe - Set Vernon County Monument and Witness Monuments as shown. Corner matches occupation lines, North, South, East and West.

(c)(d)(e) Plan view of corner with ties to at least four (4) witness monuments. If in disagreement with previously established corner, show the distances between the two corners and also indicate ties to disputed corner.



(I) Certify that the corner location on this record was determined by me or under my direction and control and that this U.S. Public Land survey Monument Record is correct and complete to the best of my knowledge and belief.

[Handwritten Signature]

 Signature

12/22/98

 Date



Filed for record in Vernon County Surveyor's Office on _____ INDEX NO. _____

(2) See next pg. also

1997 10 27

CERTIFIED LAND CORNER

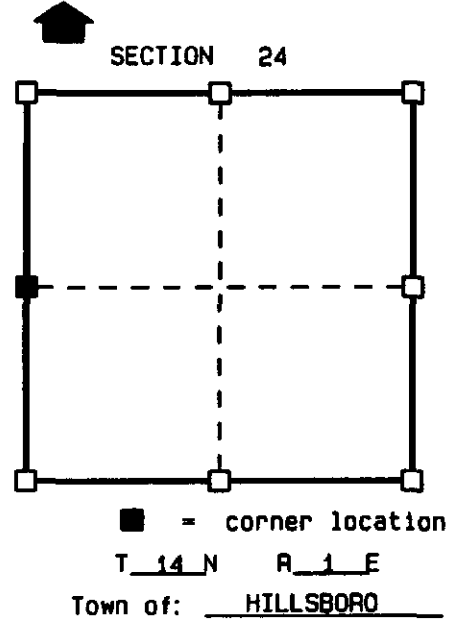
STATE OF WISCONSIN)
COUNTY OF VERNON) S.S.

CERTIFICATE

I, F. CURTIS CROOK do hereby certify
that on the 27th day of OCTOBER 1997,
I found ~~no evidence~~ (no evidence) of the W 1/4
corner of SECTION 24, T 14 N, R 1 E,
Fourth Principal Meridian, and I re-established
said corner according to the Wisconsin Statutes
as shown and described hereon.

Dated this 15th day of Dec 1997

F. CURTIS CROOK R.L.S. S-1292



Seal

History of original corner establishment:

ORIGINAL CORNER ESTABLISHED BY JAMES M. MARSH IN 1845.

FOUND NO OTHER RECORD OF SURVEYS TO ASSIST IN THE LOCATION OF THIS CORNER.

Description of corner evidence found:

ACCEPTED OCCUPATIONAL EVIDENCE AT THIS CORNER AREA. SAID LOCATION AGREED
WITH THE LOCATIONS OF THE FORTY LINE TO THE SOUTH OF THIS CORNER AND THE
NW CORNER OF SECTION 24.

SET VERNON COUNTY MONUMENT AND MADE TIES AS SHOWN BELOW.

Description of corner and witness monuments, references and accessories used to
perpetuate the original or re-established location of this corner:

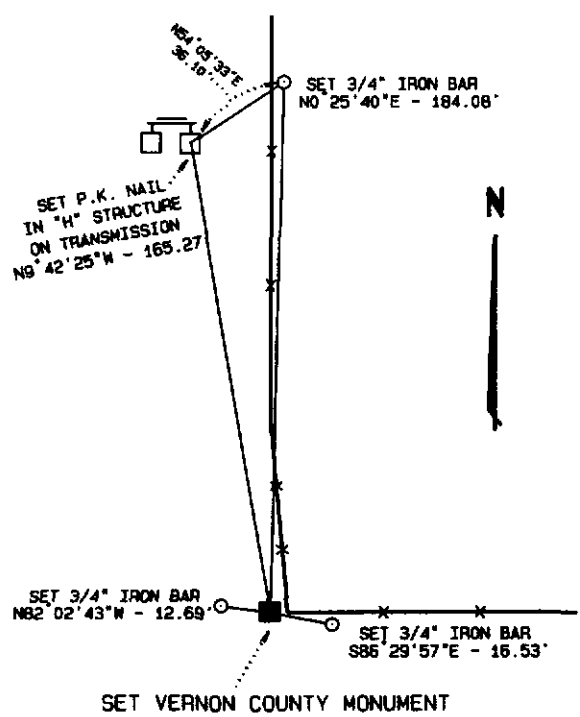
Witnesses to corner location:

- CHAD CROOK
- WADE CROOK
- MIKE EWING

NOTES:

- DRAWING IS NOT TO SCALE.
- BEARINGS ARE REFERENCED TO PROJECT.
- VERNON COUNTY MONUMENTS ARE LUNDE MONUMENTS.
- SET SURVEY MARKER SIGN NEAR MONUMENT.

Sketch:



(THIS CORNER SET AS PART OF
VERNON COUNTY'S 1997
REMONUMENTATION PROJECT.)

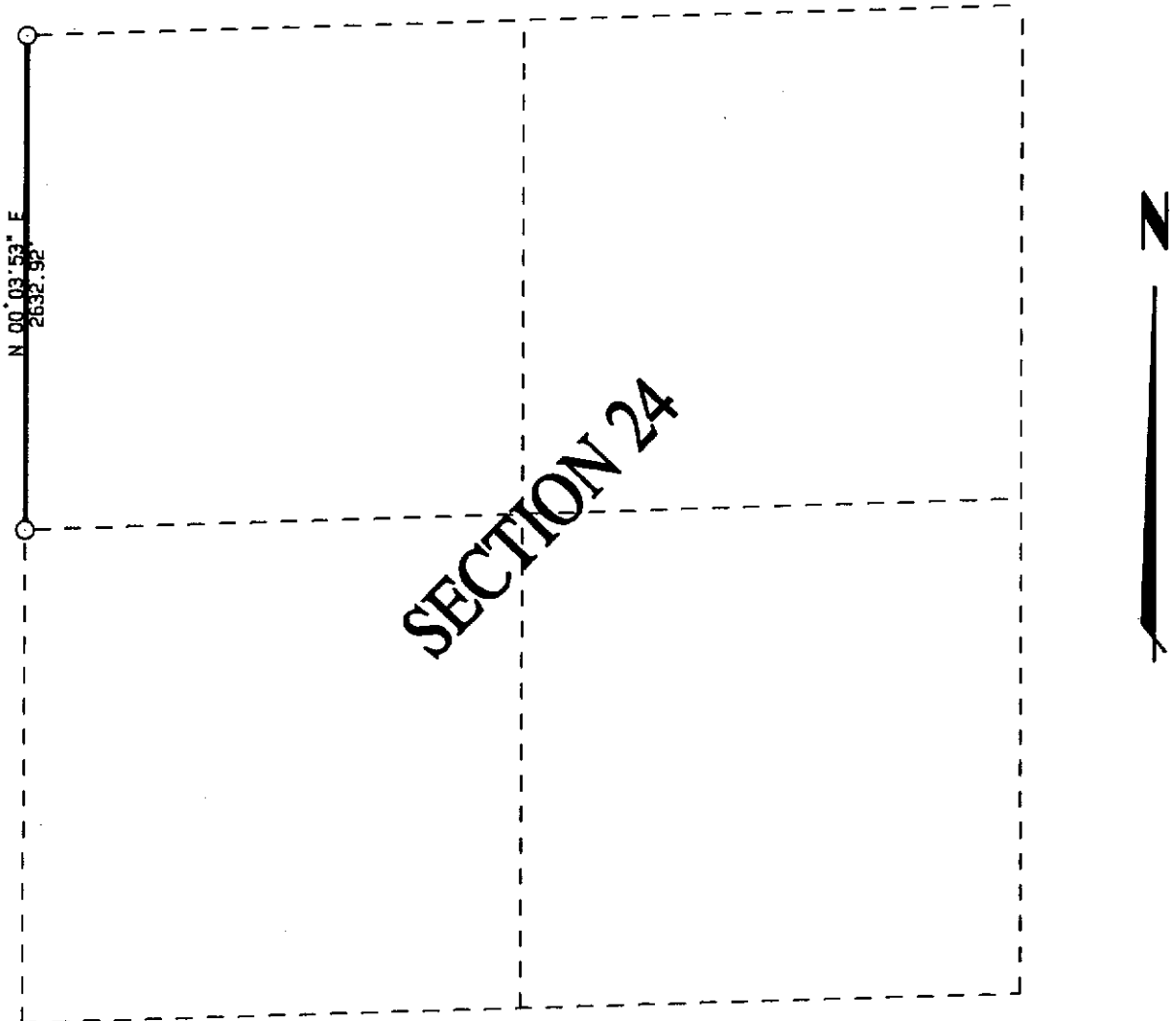
VERNON COUNTY COORDINATES

North (Y)	East (X)
193359.666	849258.384

2A

DATA SHEET

SECTION 24, T14N, R1E
TOWN OF HILLSBORO, VERNON COUNTY



NOTE: BOTH CORNERS ARE VERNON COUNTY MONUMENTS.

THIS DATA SHEET PREPARED AS PART OF
VERNON COUNTY'S 1997 REMONUMENTATION PROJECT.