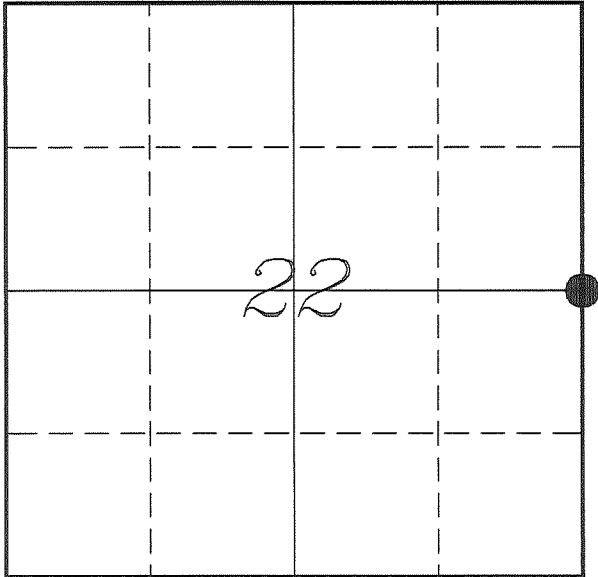


U. S. PUBLIC LAND SURVEY MONUMENT RECORD

**SECTION 22, T14N, R1E, TOWN OF HILLSBORO
VERNON COUNTY, WISCONSIN**



LOCATION OF LANDMARK

<i>VERNON COUNTY COORDINATE SYSTEM</i>	
<i>Northing</i>	<i>193235.613</i>
<i>Easting</i>	<i>843928.470</i>
<i>Datum</i>	<i>NAD 1983 (2011)</i>
<i>Elevation</i>	
<i>Datum</i>	
<i>TYPE OF LANDMARK:</i>	
<i>Set Lunde Monument 4" Brass Capped Iron Pipe</i>	
<i>BEARINGS ARE REFERENCED TO:</i>	
<i>Vernon County Coordinates (Survey Grade)</i>	

Witnesses: Larry Handschy
Al Hoff

Date: 21 June 2017

*Eagle Ridge Surveying
PO Box 213
Wilton, Wisconsin*

Describe any record evidence, monument evidence, testimonial evidence or any other material evidence you considered and whether the monument was found or restored through acceptance of an obliterated evidence location.

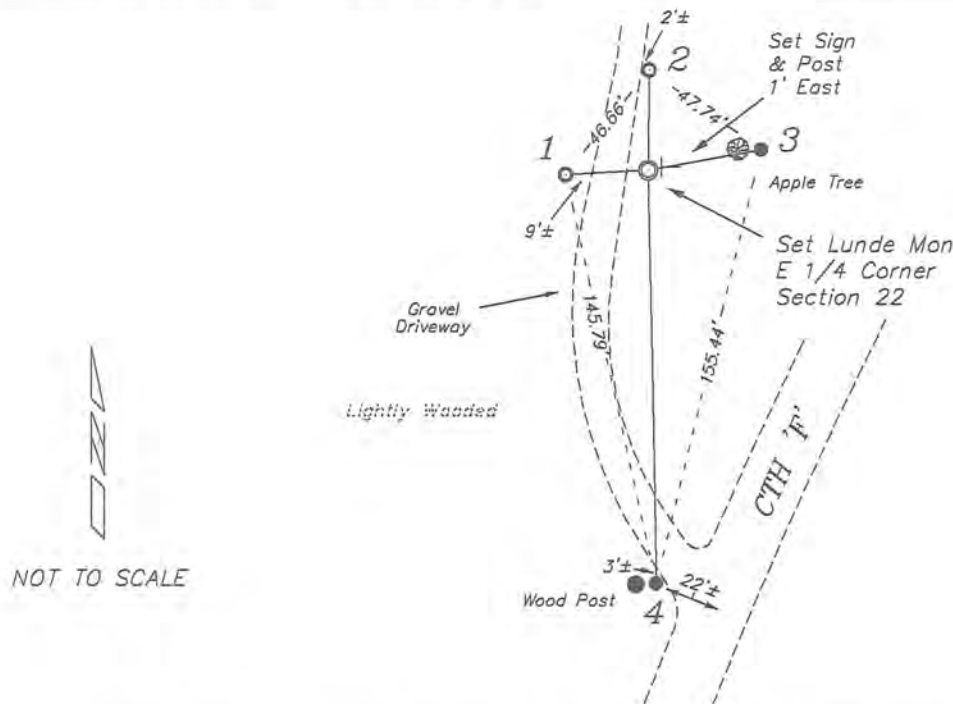
I found the 2" iron pipe set by Fauerbach along with the 1" iron pipes set by Cornell and Fauerbach. Due to the conflicting history of this corner, I felt it best to accept the location of the 2" iron pipe as the best available evidence of the original corner.
Replaced the 2 1/2" iron pipe with a Lunde Monument.

Describe or show any material discrepancy between the location of the restored corner and that of the corner previously restored or re-established.

John E Davidson established this corner in December 1852.
Terry Cornell was at this corner, in May 1998 during a survey in Section 23. He shows that he re-established and set a 1" iron pipe and prepared a tie sheet.
Craig Keach was at this corner, in June 1999, during a survey in Section 22. He shows that he found a 1" iron pipe.
Gregory Fauerbach was at this corner, in September 1999, during a survey in Section 23. He shows that he re-established this corner 46.9 feet Southwest of Cornell's 1" iron pipe. He prepared a tie sheet for this new corner.
Terry Cornell was at this corner again, in December 2000, during a survey in Section 23. He shows using a 1" iron pipe. It is uncertain which 1" iron pipe he used.
Gregory Fauerbach was at this corner again, in August 2001, during a survey in Section 23. He shows that he determined a compromise location for this corner from a corner he had earlier established and the corner that Cornell had established. He prepared a new tie sheet.
Terry Cornell was at this corner, from October 2001 thru November 2006, during several surveys in Section 23. He shows using the 2" iron pipe.
Dwayne Hefner was at this corner, in August 2004, during a survey in Section 23. He shows using a 1" - 1.5" iron pipe.
Scott Warner was at this corner, in April 2010, during a survey in Section 23. He shows using the 2" iron pipe.
Laurence Johns was at this corner, in July 2016, during a survey in Sections 14 & 23. He shows using the 2" iron pipe.

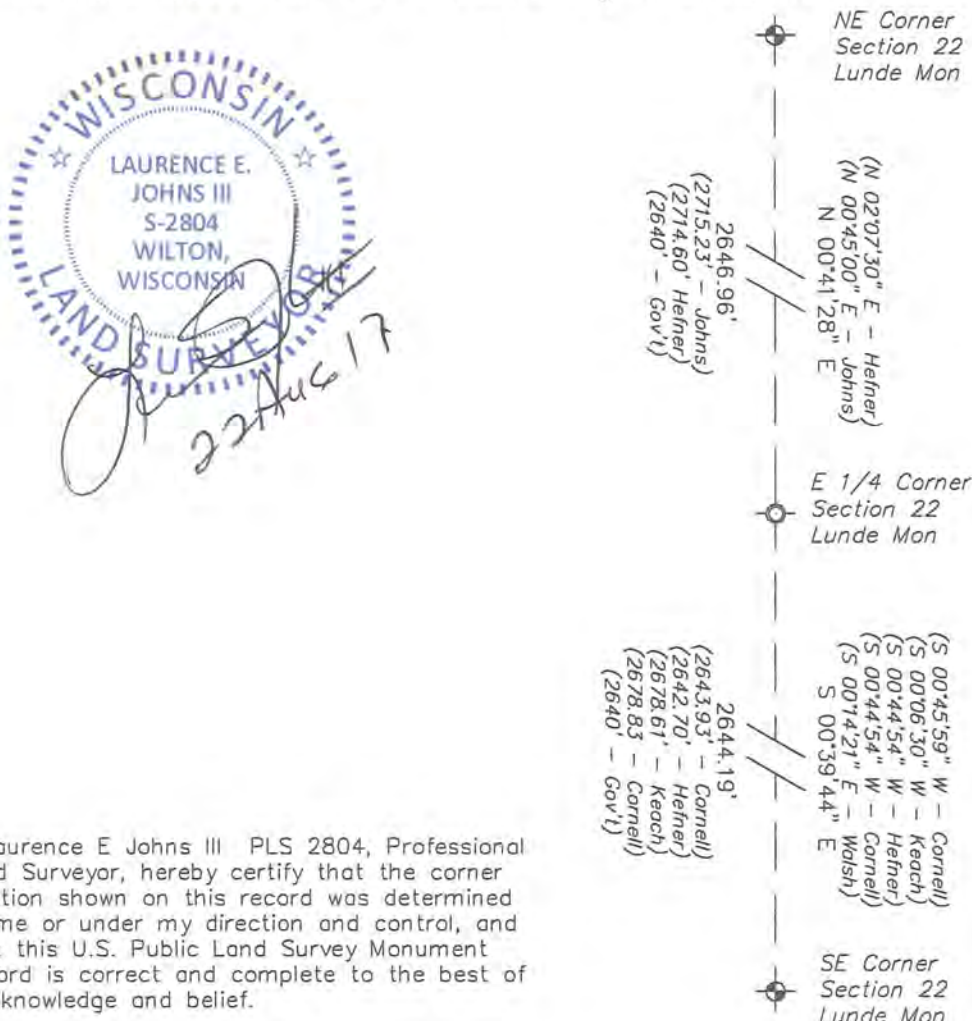
RECORD OF DURABLE WITNESS MONUMENTS

NO	DESCRIPTION	BEARING	DISTANCE
1	Existing 1" Iron Pipe Shown on Fauerbach Tie Sheet	S 86°52'21" W	28.66'
2	Existing 1" Iron Pipe Shown on Fauerbach Tie Sheet	N 00°41'11" E	34.96' (35.04')
3	Set 3/4" x 18" Iron Rod 2' East of a Apple Tree	N 79°43'28" E	39.83'
4	Set 3/4" x 18" Iron Rod 6" East of Wood Fence Post	S 01°02'16" E	143.99'



PLAN VIEW DRAWING OF REFERENCE TIES

Map Showing Distance And Direction To Other Public Land Survey Corners Used For Re-Establishing The Corner



Note:
Measurements were not made to this corner at this time.
Bearings and distances shown are based on recorded information and shown for reference.

I, Laurence E Johns III PLS 2804, Professional Land Surveyor, hereby certify that the corner location shown on this record was determined by me or under my direction and control, and that this U.S. Public Land Survey Monument Record is correct and complete to the best of my knowledge and belief.

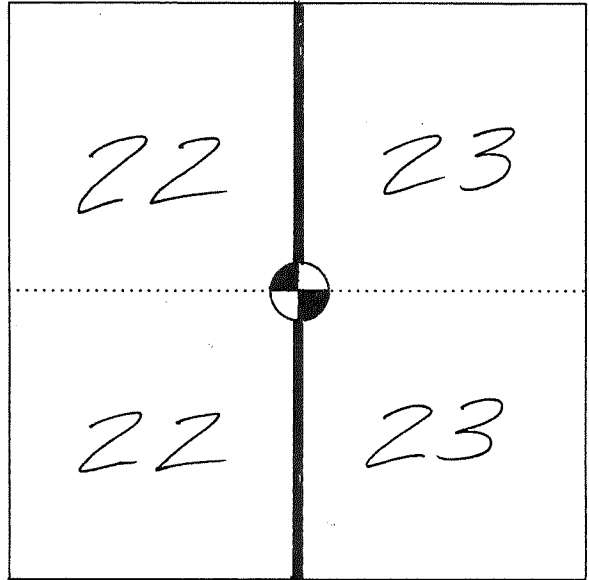
VERNON COUNTY CERTIFIED U. S. PUBLIC LAND SURVEY MONUMENT RECORD

INSTRUCTIONS: THIS RECORD SHALL SHOW THE LOCATION OF THE CORNER AND SHALL INCLUDE ALL OF THE FOLLOWING NINE ELEMENTS (A THROUGH I)

(A) IDENTIFY THE CORNER BY REFERENCE TO THE U. S. PUBLIC LAND SURVEY SYSTEM

■ = CORNER MONUMENT RESTORED

2" I.D. x 30"
GALVANIZED IRON PIPE
SET IN EASTERLY
FORESLOPE OF GRAVEL
DRIVE (15' EAST OF ♀).
T-POST GUARD ALSO SET.



SECTION _____ T 14 N, R 1 E #

STATE PLANE COORDINATES (WISCONSIN SOUTH ZONE)

NORTHING:

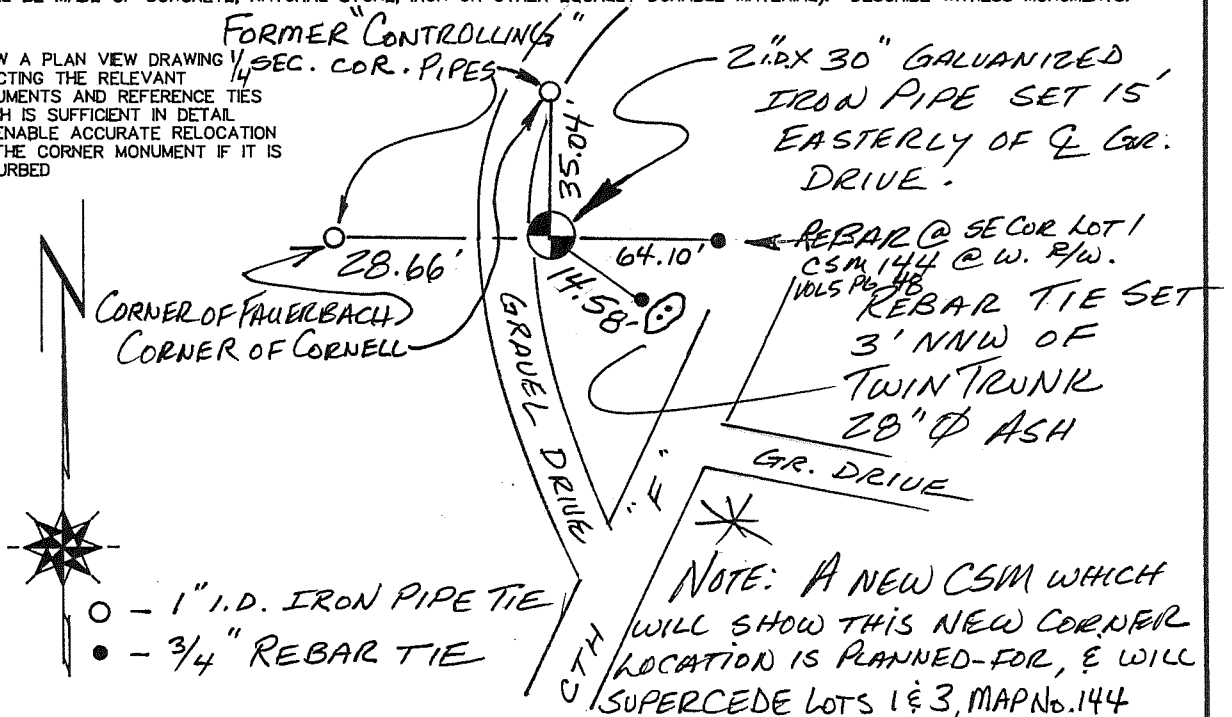
EASTING:

(B) DESCRIBE ANY RECORD EVIDENCE, MONUMENT EVIDENCE, OCCUPATIONAL EVIDENCE, TESTIMONIAL EVIDENCE OR ANY OTHER MATERIAL EVIDENCE YOU CONSIDERED, AND WHETHER THE MONUMENT WAS FOUND OR PLACED

THE CONSENSUS LOCATION FOR THE CORNER IS CONTROLLED IN THE EAST-WEST DIRECTION BY THE FINDINGS OF SURVEYOR CORNELL AS STATED IN HIS PREVIOUS TIE SHEET. THE LOCATION OF THE CORNER IN A NORTH-SOUTH DIRECTION IS CONTROLLED BY SURVEYOR FAUERBACH'S FINDINGS.

(C) IN THE PLAN VIEW DRAWING BELOW, PROVIDE REFERENCE TIES TO AT LEAST 4 WITNESS MONUMENTS, OR, IF THE LOCATION IS WITHIN A MUNICIPALITY, TO AT LEAST 2 WITNESS MONUMENTS, (WITNESS MONUMENTS SHALL BE MADE OF CONCRETE, NATURAL STONE, IRON OR OTHER EQUALLY DURABLE MATERIAL). DESCRIBE WITNESS MONUMENTS.

(D) SHOW A PLAN VIEW DRAWING DEPICTING THE RELEVANT MONUMENTS AND REFERENCE TIES WHICH IS SUFFICIENT IN DETAIL TO ENABLE ACCURATE RELOCATION OF THE CORNER MONUMENT IF IT IS DISTURBED



NOTE: A NEW CSM WHICH WILL SHOW THIS NEW CORNER LOCATION IS PLANNED-FOR, & WILL SUPERCEDE LOTS 1 & 3, MAP No. 144

VOL. 5 PG. 4B

- (E) DESCRIBE ANY MATERIAL DISCREPANCY BETWEEN THE LOCATION OF THE CORNER AS RESTORED OR REESTABLISHED AND THE LOCATION OF THAT CORNER AS PREVIOUSLY RESTORED OR REESTABLISHED BY DISTANCE AND DIRECTION. SHOW THE DISCREPANCY ON THE PLAN VIEW DRAWING UNDER (D), ABOVE. SHOW THE DISTANCES BETWEEN THE CORNER AS PREVIOUSLY RESTORED OR RE-ESTABLISHED AND (1) THE CORNER AS RESTORED OR REESTABLISHED, AND (2) TO AT LEAST 2 OF THE WITNESS MONUMENTS SHOWN ON THE DRAWING IN (D), ABOVE.

VERBAL TESTIMONY OF A NEIGHBORHOOD RESIDENT
WAS RELIED UPON TO SET MY PREVIOUS
CORNER. I NOW FIND THE TESTIMONY WAS
INADEQUATE, A "COMPROMISE" LOCATION IS NOW USED.

- (F) WAS THE CORNER RESTORED THROUGH ACCEPTANCE OF (1) AN OBLITERATED EVIDENCE LOCATION, OR, (2) A FOUND PERPETUATED LOCATION?

- (G & H) WAS THE CORNER REESTABLISHED THROUGH LOST CORNER PROPORTIONATE METHODS? IF SO SHOW THE METHOD, INCLUDING THE DIRECTIONS AND DISTANCES TO OTHER PUBLIC LAND SURVEY CORNERS USED AS EVIDENCE OR USED FOR PROPORTIONING IN DETERMINING THE CORNER LOCATION.

(I) I, Gregory A. Fauerbach

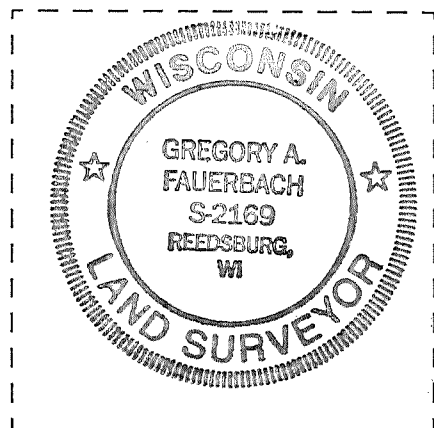
CERTIFY THAT THE CORNER LOCATION SHOWN ON THIS RECORD WAS DETERMINED BY ME OR UNDER MY DIRECTION AND CONTROL AND THAT THIS U. S. PUBLIC LAND SURVEY MONUMENT RECORD IS CORRECT AND COMPLETE TO THE BEST OF MY KNOWLEDGE AND BELIEF.

Gregory A. Fauerbach 8-14-01

SIGNATURE

DATE

AFFIX LAND SURVEYOR SEAL



VERNON COUNTY CERTIFIED U. S. PUBLIC LAND SURVEY MONUMENT RECORD

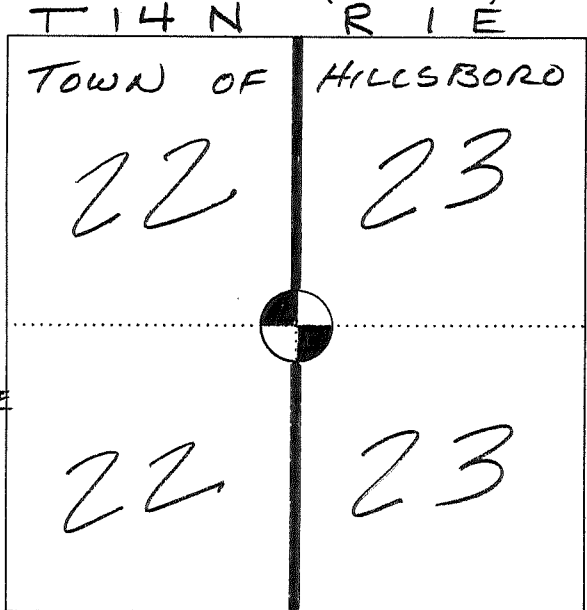
INSTRUCTIONS: THIS RECORD SHALL SHOW THE LOCATION OF THE CORNER AND SHALL INCLUDE ALL OF THE FOLLOWING NINE ELEMENTS (A THROUGH I)

(A) IDENTIFY THE CORNER BY REFERENCE TO THE U. S. PUBLIC LAND SURVEY SYSTEM

■ = CORNER MONUMENT RESTORED

FOUND 1" I.P. ON
DOWN N-S F.L.

MANY DEEDS IN THIS LOCACE
ARE BASED ON THIS POINT
AND THE 40 COR TO THE
EAST. THE HOVELSRUD P.O.S.
SURVEY FOR ATTY R.D. ENDICOTT
DATED 8-29-72 HAD 40 LINE



SECTION _____ T 14 N, R 1 E ■
BEARINGS REVERSED - SHOULD BE S 86°-10' W.
STATE PLANE COORDINATES (WISCONSIN SOUTH ZONE)

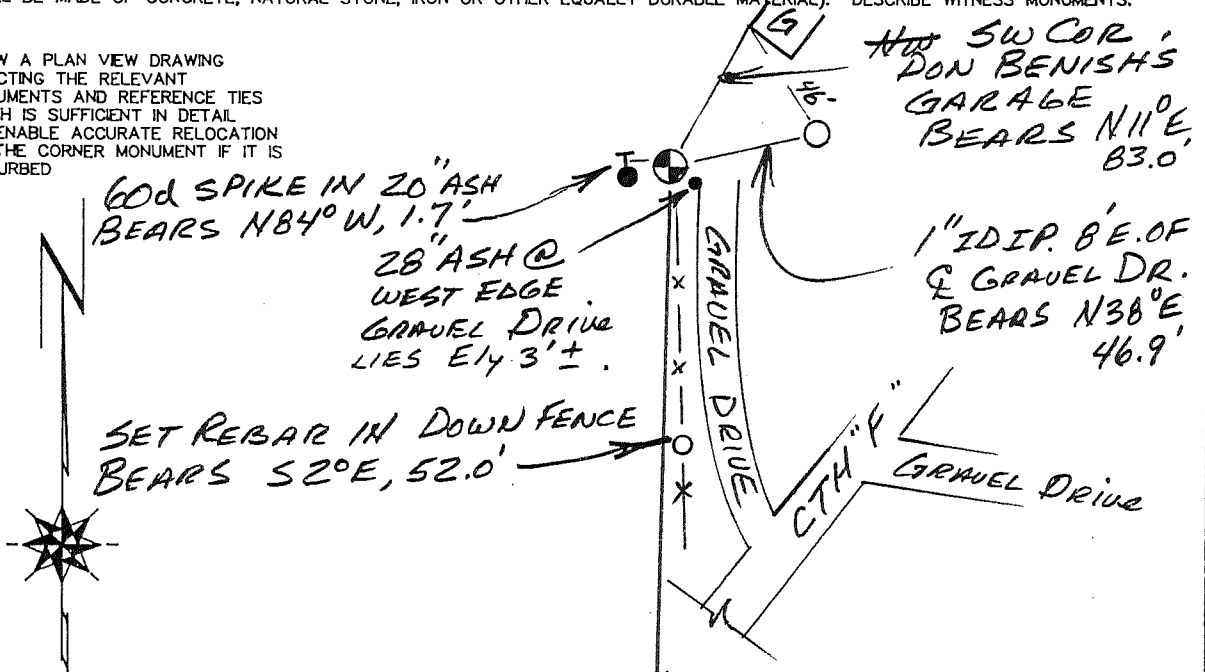
NORTHING:
EASTING:

(B) DESCRIBE ANY RECORD EVIDENCE, MONUMENT EVIDENCE, OCCUPATIONAL EVIDENCE, TESTIMONIAL EVIDENCE OR ANY OTHER MATERIAL EVIDENCE YOU CONSIDERED, AND WHETHER THE MONUMENT WAS FOUND OR PLACED

ACCEPTED AS TRUE LOCATION ALONG DOWN N-S F.L.
NEIGHBOR TO NE - DON BENISH TESTIFIED TO ITS RELEVANCE.
FITS PERFECT W/ STRONG F.L. EASTERLY (APPROX N 86° E WHICH
MANY DEEDS & SURVEYS PLOT AS S 86° E.) FITS PERFECT
ON PROJECTED LINE FROM HOVELSRUD SECOR SW 1/4 - NW 1/4 - THRU
A FOUND #4 REBAR 430' FROM & APPROX S 86° W FROM THE 40 COR.

(C) IN THE PLAN VIEW DRAWING BELOW, PROVIDE REFERENCE TIES TO AT LEAST 4 WITNESS MONUMENTS, OR, IF THE LOCATION IS WITHIN A MUNICIPALITY, TO AT LEAST 2 WITNESS MONUMENTS, (WITNESS MONUMENTS SHALL BE MADE OF CONCRETE, NATURAL STONE, IRON OR OTHER EQUALLY DURABLE MATERIAL). DESCRIBE WITNESS MONUMENTS.

(D) SHOW A PLAN VIEW DRAWING DEPICTING THE RELEVANT MONUMENTS AND REFERENCE TIES WHICH IS SUFFICIENT IN DETAIL TO ENABLE ACCURATE RELOCATION OF THE CORNER MONUMENT IF IT IS DISTURBED



RR SPIKE IN & CTH "F" BEARS S 55°-30' E, 1326.2'
73' WEST
NW COR DON HUBBARD'S METAL SHED.
SH
(44) See next pg. also!
See 44A & B

(E) DESCRIBE ANY MATERIAL DISCREPANCY BETWEEN THE LOCATION OF THE CORNER AS RESTORED OR REESTABLISHED AND THE LOCATION OF THAT CORNER AS PREVIOUSLY RESTORED OR REESTABLISHED BY DISTANCE AND DIRECTION. SHOW THE DISCREPANCY ON THE PLAN VIEW DRAWING UNDER (D), ABOVE. SHOW THE DISTANCES BETWEEN THE CORNER AS PREVIOUSLY RESTORED OR RE-ESTABLISHED AND (1) THE CORNER AS RESTORED OR REESTABLISHED, AND (2) TO AT LEAST 2 OF THE WITNESS MONUMENTS SHOWN ON THE DRAWING IN (D), ABOVE.

(F) WAS THE CORNER RESTORED THROUGH ACCEPTANCE OF (1) AN OBLITERATED EVIDENCE LOCATION, OR, (2) A FOUND PERPETUATED LOCATION?

FOUND
PERPETUATED CORNER w/ 1" PIPE OF COMMON REPORT.

(G & H) WAS THE CORNER REESTABLISHED THROUGH LOST CORNER PROPORTIONATE METHODS? IF SO SHOW THE METHOD, INCLUDING THE DIRECTIONS AND DISTANCES TO OTHER PUBLIC LAND SURVEY CORNERS USED AS EVIDENCE OR USED FOR PROPORTIONING IN DETERMINING THE CORNER LOCATION.

(I) GREGORY FAUERBACH

CERTIFY THAT THE CORNER LOCATION SHOWN ON THIS RECORD WAS DETERMINED BY ME OR UNDER MY DIRECTION AND CONTROL AND THAT THIS U. S. PUBLIC LAND SURVEY MONUMENT RECORD IS CORRECT AND COMPLETE TO THE BEST OF MY KNOWLEDGE AND BELIEF.

Gregory A. Fauerbach

SIGNATURE

DATE

9/15/99

AFFIX LAND SURVEYOR SEAL



MAY 29 1998

RECORD OF CORNER MONUMENTATION

WEST QUARTER CORNER SECTION 23 TOWNSHIP 14 N RANGE 1 EAST
VERNON COUNTY, WISCONSIN

STATE PLANE COORDINATES OF _____
(Y) NORTH _____
(X) EAST _____

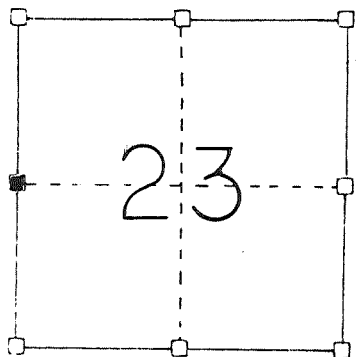
ELEVATION _____

HORIZONTAL DATUM: WISCONSIN STATE PLANE COORDINATE SYSTEM, SOUTH ZONE



SKETCH OF CORNER REFERENCE TIES

SECTION TWENTY-THREE

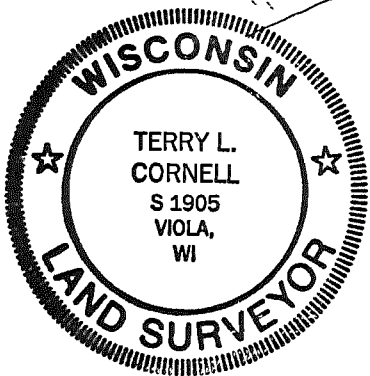
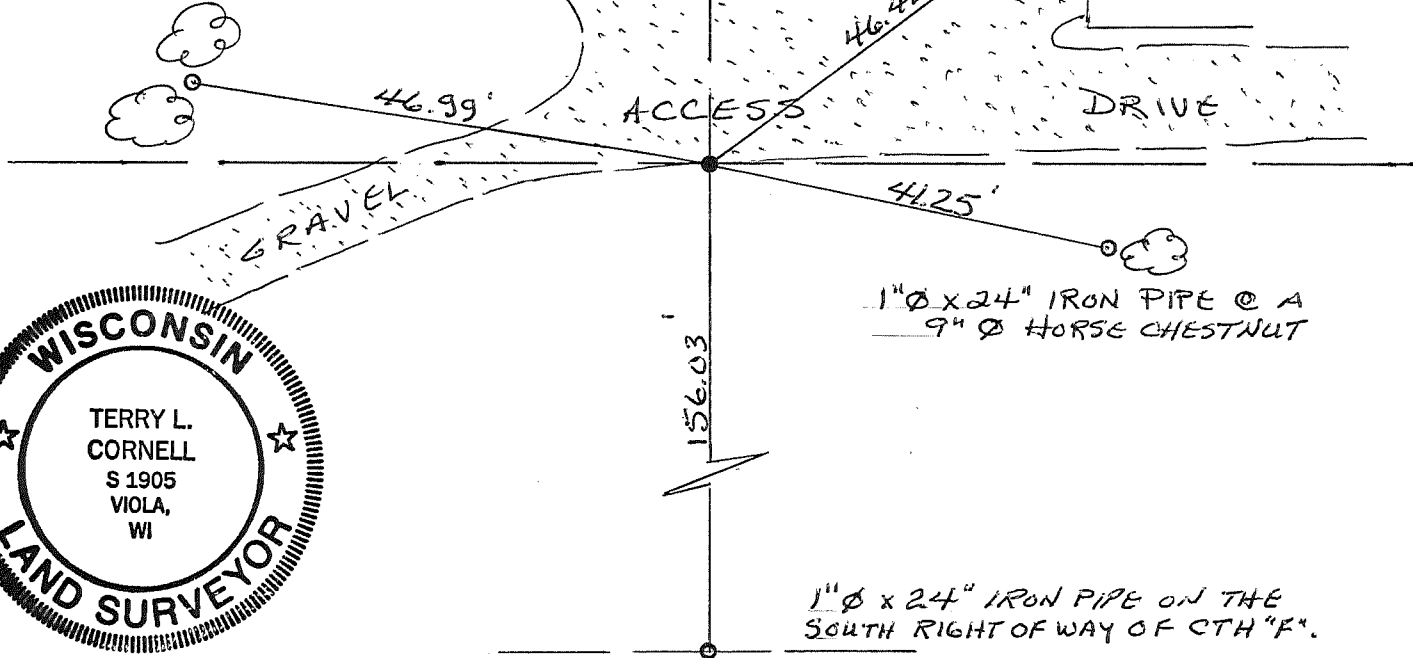


TYPE OF MONUMENT:

1" Ø x 24" IRON PIPE

1" Ø x 24" IRON PIPE BETWEEN A 10" Ø AND 16" Ø ASH

1" Ø x 24" IRON PIPE



SURVEYOR'S CERTIFICATE
(STATE OF WISCONSIN)

I HEREBY CERTIFY THAT A TRAVERSE OF SAID SECTION 23 WAS PERFORMED ON MAY 5, 1998. A LINE WAS CONSTRUCTED FROM THE EAST QUARTER (E¹/₄) CORNER TO THE MIDPOINT OF THE WEST LINE, THIS LINE WAS EXTENDED AND INTERSECTED BY A LINE FROM THE NORTHWEST CORNER THROUGH AN IRON PIPE LOCATED 1419.02 FEET SOUTH THEREOF. THIS PRODUCED DISTANCES OF 2679.94 FEET (NORTH) AND 2678.85 FEET (SOUTH). THIS POINT WAS ACCEPTED AS THE CORNER AND THE TIES SHOWN WERE PLACED TO PERPETUATE THIS LOCATION.

DATED THIS 28th DAY OF
MAY, 1998.

Terry L. Cornell
REGISTERED LAND SURVEYOR
S-1905

BB

44A

See 44B

✓