

VERNON COUNTY CERTIFIED U.S. PUBLIC LAND SURVEY MONUMENT RECORD

INSTRUCTIONS: THIS RECORD SHALL SHOW THE LOCATION OF THE CORNER AND SHALL INCLUDE ALL OF THE FOLLOWING ELEMENTS (A-I)

(A) IDENTIFY THE CORNER BY REFERENCE TO THE U.S. PUBLIC LAND SURVEY SYSTEM

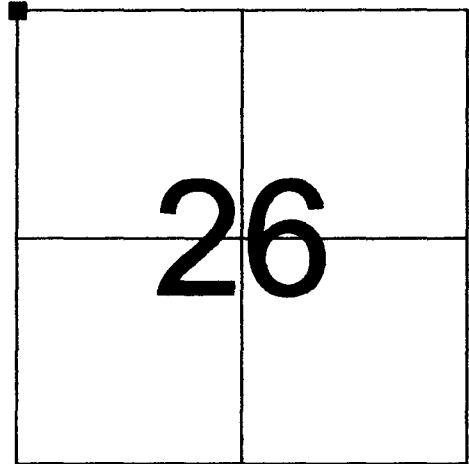
■ = CORNER MONUMENT RESTORED

WITNESSES TO CORNER LOCATION:

- 1) RICHARD BLAKESLEE
- 2) JOSH MURPHY

VERNON COUNTY COORDINATES

NORTHING: 1991.631
EASTING: 843958.988



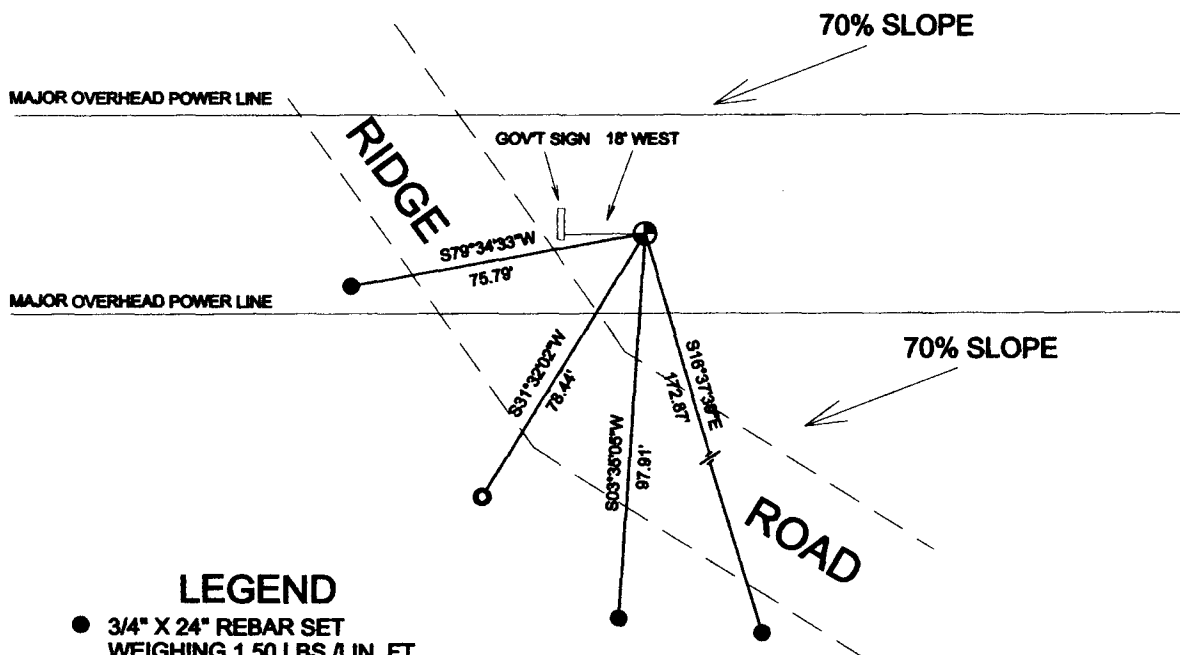
SECTION 26, TOWN 14 NORTH, RANGE 1 EAST

(B) DESCRIBE ANY RECORD EVIDENCE, MONUMENT EVIDENCE, OCCUPATIONAL EVIDENCE, TESTIMONIAL EVIDENCE OR ANY OTHER MATERIAL EVIDENCE YOU CONSIDERED, AND WHETHER THE MONUMENT WAS FOUND OR PLACED.

RESEARCHED ALL VERNON COUNTY SURVEY RECORDS REGARDING THIS CORNER. FOUND THAT THE ORIGINAL CORNER WAS SET IN 1852 PER GOVERNMENT NOTES. WE DID NOT FIND ANY EVIDENCE OF ANY OF THE ORIGINAL BEARING TREES. WE FOUND A 3/4" REBAR FROM A PREVIOUS SURVEY ON THE FACE OF A STEEP SIDE HILL. NUMEROUS OTHER SURVEYORS HAVE ACCEPTED THIS POSITION TO BE CORRECT. WE REPLACED THE 3/4" REBAR WITH A VERNON COUNTY MONUMENT.

(C) IN THE PLAN VIEW DRAWING BELOW, PROVIDE REFERENCE TIES TO AT LEAST 4 WITNESS MONUMENTS OR, IF THE LOCATION IS WITHIN A MUNICIPALITY, TO AT LEAST 2 WITNESS MONUMENTS. (WITNESS MONUMENTS SHALL BE MADE OF CONCRETE, NATURAL STONE, IRON, OR OTHER EQUALLY DURABLE MATERIAL.) DESCRIBE WITNESS MONUMENTS.

(D) SHOW A PLAN VIEW DRAWING, DEPICTING THE RELEVANT MONUMENTS AND REFERENCE TIES, WHICH IS SUFFICIENTLY DETAILED TO ENABLE ACCURATE RELOCATION OF THE CORNER MONUMENT IF IT IS DISTURBED.



LEGEND

- 3/4" X 24" REBAR SET WEIGHING 1.50 LBS./LIN. FT.
- ⊕ VERNON COUNTY MONUMENT W/ BRASS CAP SET
- 1" IRON PIPE FOUND

(E) DESCRIBE ANY MATERIAL DISCREPANCY BETWEEN THE LOCATION OF THE CORNER AS RESTORED OR REESTABLISHED AND THE LOCATION OF THAT CORNER AS PREVIOUSLY RESTORED OR REESTABLISHED BY DISTANCE AND DIRECTION. SHOW THE DISCREPANCY ON THE PLAN VIEW DRAWING UNDER (D), ABOVE. SHOW THE DISTANCES BETWEEN THE CORNER AS PREVIOUSLY RESTORED OR REESTABLISHED AND (1) THE CORNER AS RESTORED OR REESTABLISHED, AND (2) TO AT LEAST 2 OF THE WITNESS MONUMENTS AS SHOWN ON THE DRAWING IN (D), ABOVE.

Recorded distance between $W\frac{1}{4}$ and NW per CSM No. 409 is 2650.81. Recorded distances between the NW and $N\frac{1}{4}$ are 2664.91 and 2658.27.

See Section Summary in records for our data.

(F) WAS THE CORNER RESTORED THROUGH ACCEPTANCE OF (1) AN OBLITERATED EVIDENCE LOCATION, OR (2) A FOUND PERPETUATED LOCATION?

OLD FENCE CORNER ASSUMED TO PERPETUATE ORIGINAL CORNER'S LOCATION

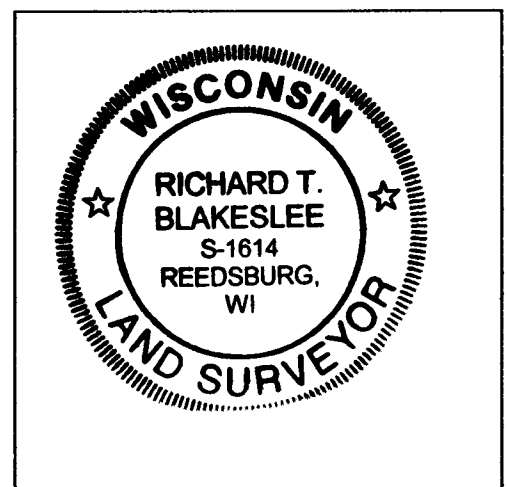
(G & H) WAS THE CORNER REESTABLISHED THROUGH LOST CORNER PROPORTIONATE METHODS? IF SO SHOW THE METHOD, INCLUDING THE DIRECTIONS AND DISTANCES TO OTHER PUBLIC LAND SURVEY CORNERS USED AS EVIDENCE OR USED FOR PROPORTIONING IN DETERMINING THE CORNER LOCATION.

NO

AFFIX LAND SURVEYOR SEAL

(I) I, RICHARD T. BLAKESLEE CERTIFY THAT THE LOCATION SHOWN ON THIS RECORD WAS DETERMINED BY ME OR UNDER MY DIRECTION AND CONTROL AND THAT THIS U.S. PUBLIC LAND SURVEY MONUMENT RECORD IS CORRECT AND COMPLETE TO THE BEST OF MY KNOWLEDGE AND BELIEF.

Richard T. Blakeslee 4-17-07
SIGNATURE DATE

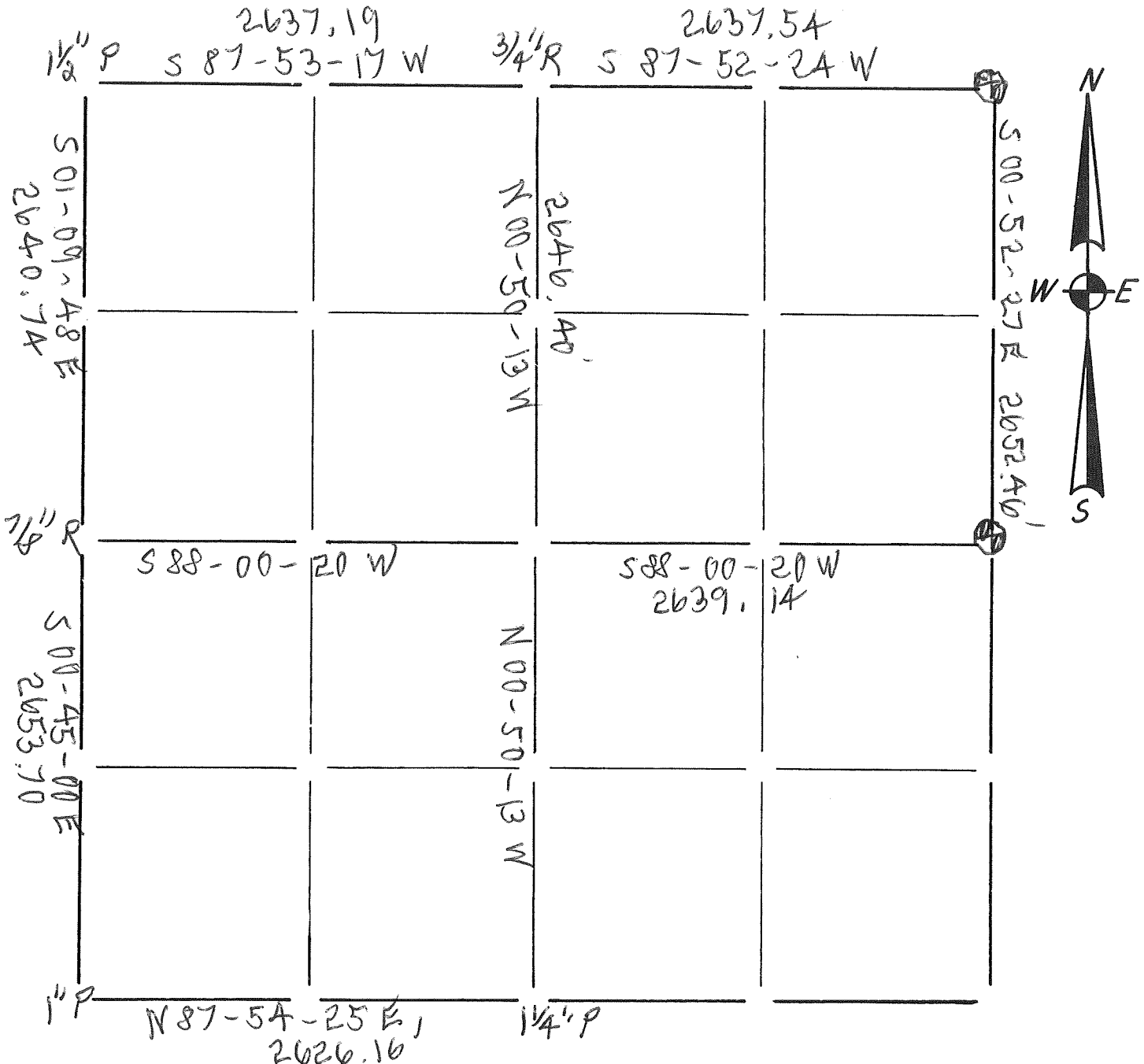


Coordinate Comparisons - Blakelsee - Excelsior 092711

Corner Designation	Corner Description	Northing	Easting	Description	Comments
D – Excelsior Group	NW 26-T14N-R1E	190591.600	843959.030	Lunde Found	WISCRS 83 (2007) – Multiple RTK Locations
Blakeslee		190591.631	843958.988	Lunde Set	Assumed to be WISCRS 83 (1997)
Difference		-0.031	0.042		Differing Adjustments – Acceptable Delta – On Steep Slope
E – Excelsior Group	S 33-T14N-R1E	179777.271	836164.655	Lunde Found	WISCRS 83 (2007) – Static w/ OPUS Check
Blakeslee		179775.745	836155.972	Lunde Set	
Difference		1.526	8.683		
G – Excelsior Group	N 3-T13N-R1E	179945.230	841398.180	Lunde Found	WISCRS 83 (2007) – Static O/S (3) w/ OPUS & RTK Checks
Blakeslee		179951.020	841395.920	Lunde Set	** Note: Monument is 0.90' north of town line **
Difference		-5.790	2.260		

Section Summary and Index

27 - 14N - 1E
 Section Town Range
 TN HILLSBORO VERNON CO



LEGEND

- - Harrison cast iron monument. 4" ALUM VERNON CO, MON.
- - Stone or concrete monument.
- - Other _____

Paul A. [Signature]
 5/15/15