

U.S. PUBLIC LAND SURVEY MONUMENT RECORD VERNON COUNTY, WISCONSIN.

IN ACCORDANCE WITH WISCONSIN ADMINISTRATIVE CODE, CHAPTER A-E 7.08 (3) (A) - (I)

RECOVERY PROCEDURES:

(B) A DESCRIPTION OF ANY RECORD EVIDENCE, MONUMENT EVIDENCE, OCCUPATIONAL EVIDENCE, TESTIMONIAL EVIDENCE OR ANY OTHER MATERIAL EVIDENCE CONSIDERED BY THE SURVEYOR, AND WHETHER THE MONUMENT WAS FOUND OR PLACED;

GOVERNMENT LAND OFFICE (GLO) ORIGINAL SURVEY
DECEMBER 1851 - JANUARY 1852, J.E. DAVIDSON, SURVEYOR

NORTH BETWEEN SECTIONS 27 & 28, VARIATION 8°40' E

80.00 SET POST CORNER TO SECTIONS 21, 22, 27 & 28
WHITE OAK 16, N 35° E, 30 LINKS (19.80')
ASPEN 14, S 31° W, 17 LINKS (11.22')

THE EXCELSIOR GROUP, LLC, AUGUST, 2011, MATTHEW M FILUS, SURVEYOR

I HAVE FOUND NO EVIDENCE OR ACCESSORIES OF THE ORIGINAL GLO CORNER. IT APPEARS AS THOUGH THE AREA HAS BEEN FARMED EXTENSIVELY, AS IT IS CURRENTLY COMPLETELY CLEARED, CROPPED AND PASTURED. ADDITIONALLY, A MAJOR ELECTRICAL TRANSMISSION LINE RUNS IN AN EAST-WEST DIRECTION DIRECTLY OVER THIS CORNER.

I HAVE FOUND A 2" X 26" LONG IRON PIPE AT THE SOUTHEAST CORNER OF A RAILROAD TIE FENCE CORNER POST AS SHOWN ON SHEET 1. THIS PIPE HAS BEEN REFERENCED UPON NUMEROUS SURVEYS BETWEEN 1986 AND 2005. I HAVE VERIFIED IT'S POSITION AS CORRECT BY EXISTING MONUMENTATION ALONG THE WEST AND NORTH LINES OF SECTION 27 AND WITNESSED AS SHOWN ON SHEET 1 AND POSITIONED AS SHOWN ON SHEETS 4 AND 5 OF THIS DOCUMENT.

(E) A DESCRIPTION OF ANY MATERIAL DISCREPANCY BETWEEN THE LOCATION OF THE CORNER AS RESTORED OR REESTABLISHED AND THE LOCATION OF THAT CORNER AS PREVIOUSLY RESTORED OR REESTABLISHED;

NONE

(F) WHETHER THE CORNER WAS RESTORED THROUGH ACCEPTANCE OF AN OBLITERATED EVIDENCE LOCATION OR A FOUND PERPETUATED LOCATION;

A FOUND PERPETUATED LOCATION

(G) WHETHER THE CORNER WAS REESTABLISHED THROUGH LOST-CORNER PROPORTIONATE METHODS;

NO

SURVEYOR'S CERTIFICATE: CHAPTER 7.08 (3) (I)

THE UNDERSIGNED HEREBY CERTIFIES THAT THE U.S. PUBLIC LAND SURVEY MONUMENT RECORD SHOWN WAS DETERMINED BY THEM OR UNDER THEIR DIRECTION AND IS CORRECT TO THE BEST OF THEIR KNOWLEDGE AND BELIEF.



THE EXCELSIOR GROUP, LLC
MATTHEW M FILUS, WISCONSIN REGISTERED LAND SURVEYOR S-2185

10/6/2011

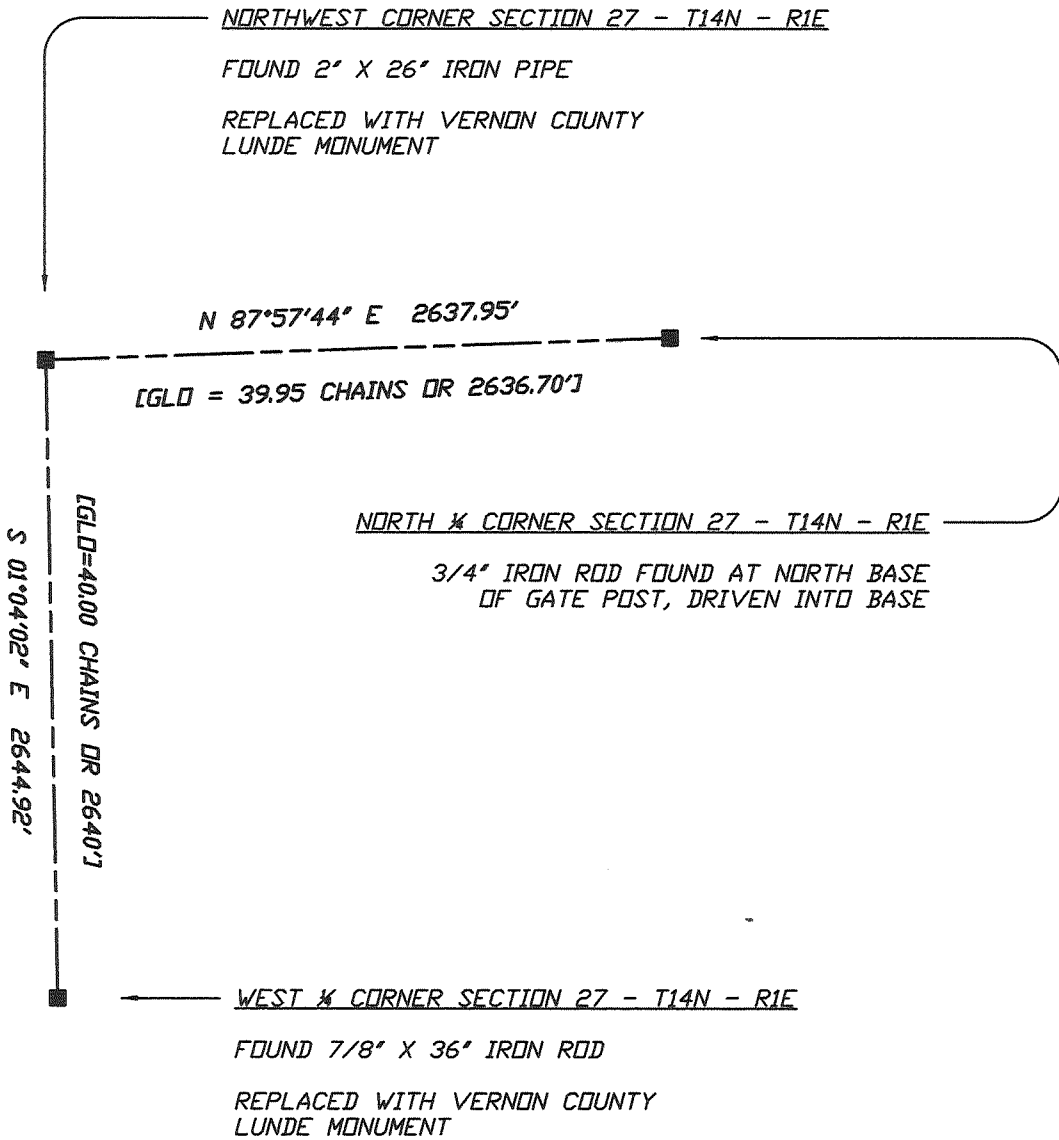
DATE CERTIFIED

U.S. PUBLIC LAND SURVEY MONUMENT RECORD VERNON COUNTY, WISCONSIN.

IN ACCORDANCE WITH WISCONSIN ADMINISTRATIVE CODE, CHAPTER A-E 7.08 (3) (A) - (I)

ADJACENT PLSS CORNER LOCATIONS:

(H) THE DIRECTIONS AND DISTANCES TO OTHER PUBLIC LAND SURVEY CORNERS WHICH WERE USED AS EVIDENCE OR USED FOR PROPORTIONING IN DETERMINING THE CORNER LOCATION;



NOT TO SCALE
UNLESS NOTED, BEARINGS ARE GRID

SURVEYOR'S CERTIFICATE: CHAPTER 7.08 (3) (I)

THE UNDERSIGNED HEREBY CERTIFIES THAT THE U.S. PUBLIC LAND SURVEY MONUMENT RECORD SHOWN WAS DETERMINED BY THEM OR UNDER THEIR DIRECTION AND IS CORRECT TO THE BEST OF THEIR KNOWLEDGE AND BELIEF.



[Handwritten Signature]

10/6/2011

THE EXCELSIOR GROUP, LLC
 MATTHEW M FILUS, WISCONSIN REGISTERED LAND SURVEYOR S-2185

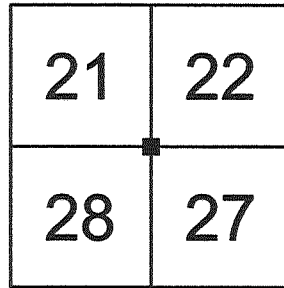
DATE CERTIFIED

VERNON COUNTY COORDINATE FORM

"AS AN ADDENDUM TO"
A CERTIFIED U.S. PUBLIC LAND SURVEY MONUMENT RECORD

LOCATION: (A) THE IDENTITY OF THE CORNER, AS REFERENCED TO THE U.S. PUBLIC LAND SURVEY SYSTEM.

SECTION 27 - TOWN 14 N - RANGE 1 E
 TOWNSHIP OF HILLSBORO
 TYPE OF CORNER NORTHWEST CORNER
 TYPE OF MONUMENT VERNON COUNTY LUNDE MONUMENT SET



COORDINATES: (B)

GEOGRAPHIC (DEGREES, MINUTES AND DECIMAL SECONDS TO 4 PLACES)

LATITUDE 43° 40' 07.76879" N
 LONGITUDE 90° 22' 21.33548" W
 ELLIPSOID HT (M) N/A
 HORIZONTAL DATUM WISCRS - VERNON COUNTY - NAD83 (2007)
 ORTHOMETRIC HT (US FT) N/A
 VERTICAL DATUM N/A

VERNON COUNTY COORDINATES (US FT)	COORDINATE QUALITY
NORTHING <u>190,403.353</u>	<u>± 0.03'</u>
EASTING <u>838,686.973</u>	<u>± 0.03'</u>

METHOD USED TO COMPUTE COORDINATES (CHECK AND COMPLETE AS APPLICABLE)

RTK OBSERVATIONS STATIC BASELINES OPUS SOLUTION (ATTACH COPY OF OPUS REPORT)
 COMBINATION OF CONVENTIONAL PROCEDURES WITH GPS OBSERVATIONS TO SET TEMPORARY CONTROL
 WAS A LEAST SQUARES ADJUSTMENT USED TO COMPUTE COORDINATES?

FOR NON-OPUS SOLUTIONS, LIST THE CONTROL STATIONS USED FOR COORDINATE COMPUTATIONS (A MINIMUM OF 2 DIFFERENT CONTROL STATIONS OR 2 DIFFERENT TIME COMBINATIONS FROM THE SAME CONTROL STATION ARE REQUIRED):

WHEN A DIRECT OBSERVATION OF THE CORNER IS NOT POSSIBLE, AND A COMBINATION OF DIFFERENT GPS AND/OR CONVENTIONAL PROCEDURES MUST BE USED TO DETERMINE COORDINATE VALUES, PROVIDE A BRIEF DESCRIPTION OF YOUR PROCEDURES ON THE BACK OF THIS FORM.

** THIS CORNER MONUMENT WAS POSITIONED THROUGH A NETWORK OF BOTH GPS AND CONVENTIONAL OBSERVATIONS REFER TO SHEET 5 OF 5 FOR THE CONSTRAINED CONTROL STATIONS, OBSERVATION TIMES AND ADJUSTMENT RESULTS

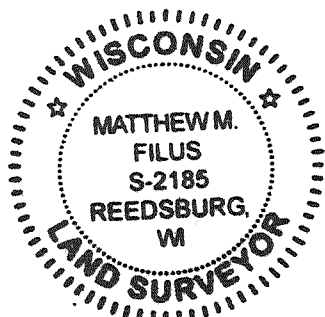
REASON FOR SUBMITTAL: (C) (CHECK ONE)

BEING FILED WITH A NEW US PLSS MONUMENT RECORD
 TO CORRECT THE COORDINATES LISTED ON A PREVIOUSLY FILED PLSS MONUMENT RECORD
 TO PROVIDE COORDINATES FOR A PREVIOUSLY FILED PLSS MONUMENT RECORD WITHOUT COORDINATES
 TO PROVIDE SUPPLEMENTAL COORDINATES FOR A PREVIOUSLY FILED PLSS MONUMENT RECORD

RLS AND DATE OF PLSS MONUMENT RECORD _____

SURVEYOR'S CERTIFICATE: (D) AGENT(S) PERFORMING GPS OBSERVATION & COORDINATE COMPUTATION

I, MATTHEW M FILUS, WISCONSIN REGISTERED LAND SURVEYOR NUMBER 2185, HEREBY CERTIFY THAT THE COORDINATES PROVIDED ON THIS RECORD WERE DETERMINED BY ME OR UNDER MY DIRECTION AND CONTROL AND THAT THIS COORDINATE SUBMISSION FORM IS CORRECT AND COMPLETE TO THE BEST OF MY KNOWLEDGE AND BELIEF.



(Handwritten Signature)

10/6/2011

THE EXCELSIOR GROUP, LLC
 MATTHEW M FILUS, WISCONSIN REGISTERED LAND SURVEYOR S-2185

DATE CERTIFIED

VERNON COUNTY COORDINATE FORM
"AS AN ADDENDUM TO"
A CERTIFIED U.S. PUBLIC LAND SURVEY MONUMENT RECORD

CONTROL STATIONS, OBSERVATION TIMES & ADJUSTMENT RESULTS:

HORIZONTAL ADJUSTMENT REPORT

Unadjusted Observations

Control Coordinates:

Sta.	N:	E:	StErr N:	StErr E:	
BNTY1	190403.353	838686.973	0.024	0.024	GPS OBSERVATION 9/8/2011 09:45-10:15
DILLY	182094.130	817853.323	0.000	0.000	
GREENWOOD	180380.777	842706.521	0.000	0.000	
HILLS	195721.217	837995.861	0.000	0.000	
WONEWOC	194112.130	861156.707	0.000	0.000	

Relative 1:20,00 Error and Specification Tolerances

Sta.	Sta.	Dist.	Actual Semi Major	Allowable Semi Major	Ratio Actual/Allowable	Semi Minor	Max. Err. Az.
BNTY1	DILLY	22429.57	0.03	1.12	0.03	0.03	N 41-42'43"E
BNTY1	GREENWOOD	10798.56	0.03	0.54	0.06	0.03	N 41-42'43"E
BNTY1	HILLS	5362.58	0.03	0.27	0.11	0.03	N 41-42'43"E
BNTY1	WONEWOC	22773.76	0.03	1.14	0.03	0.03	N 41-42'43"E

SURVEYOR'S CERTIFICATE: (D) AGENT(S) PERFORMING GPS OBSERVATION & COORDINATE COMPUTATION

I, MATTHEW M FILUS, WISCONSIN REGISTERED LAND SURVEYOR NUMBER 2185, HEREBY CERTIFY THAT THE COORDINATES PROVIDED ON THIS RECORD WERE DETERMINED BY ME OR UNDER MY DIRECTION AND CONTROL AND THAT THIS COORDINATE SUBMISSION FORM IS CORRECT AND COMPLETE TO THE BEST OF MY KNOWLEDGE AND BELIEF.



Matthew M. Filus

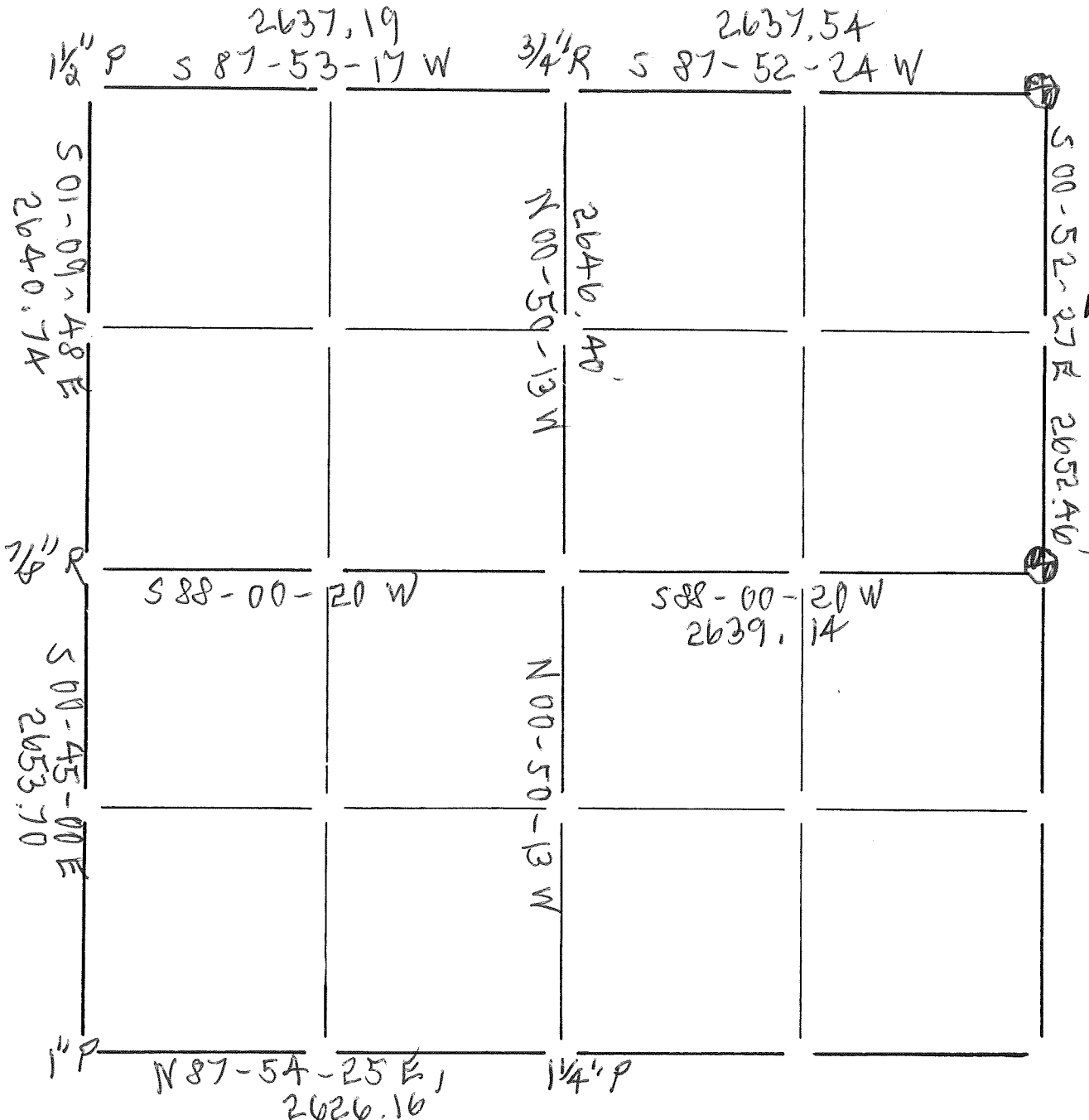
THE EXCELSIOR GROUP, LLC
 MATTHEW M FILUS, WISCONSIN REGISTERED LAND SURVEYOR S-2185

10/6/2011

DATE CERTIFIED

Section Summary and Index

27 - 14N - 2E
 Section Town Range
 TN HILLSBORO VERNON CO



LEGEND

- - Harrison-cast iron monument. 4" ALUM VERNON CO, MON.
- - Stone or concrete monument.
- - Other _____

Paul A. [Signature]
 5/15/15