

RECEIVED
 AUG 14 2006
 BY: *S. Jacobson*

VERNON COUNTY
 CERTIFIED U.S. PUBLIC LAND SURVEY MONUMENT RECORD

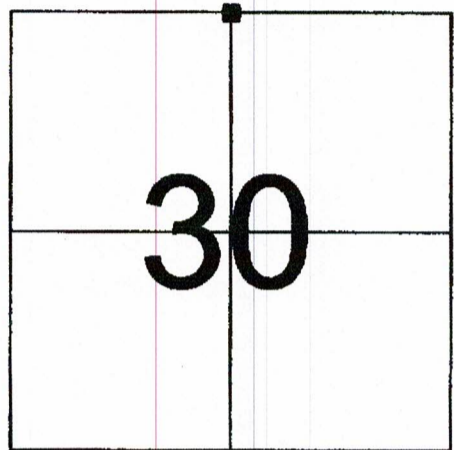
INSTRUCTIONS: THIS RECORD SHALL SHOW THE LOCATION OF THE CORNER AND SHALL INCLUDE ALL OF THE FOLLOWING ELEMENTS (A-I)

(A) IDENTIFY THE CORNER BY REFERENCE TO THE U.S. PUBLIC LAND SURVEY SYSTEM

■ = CORNER MONUMENT RESTORED

WITNESSES TO CORNER LOCATION:

- 1) RICHARD BLAKESLEE
- 2) JOSH MURPHY



VERNON COUNTY COORDINATES Revised 03/23/21 (2011)
 NORTHING: 190,083.325 190084.02
 EASTING: 825,487.770 825488.37

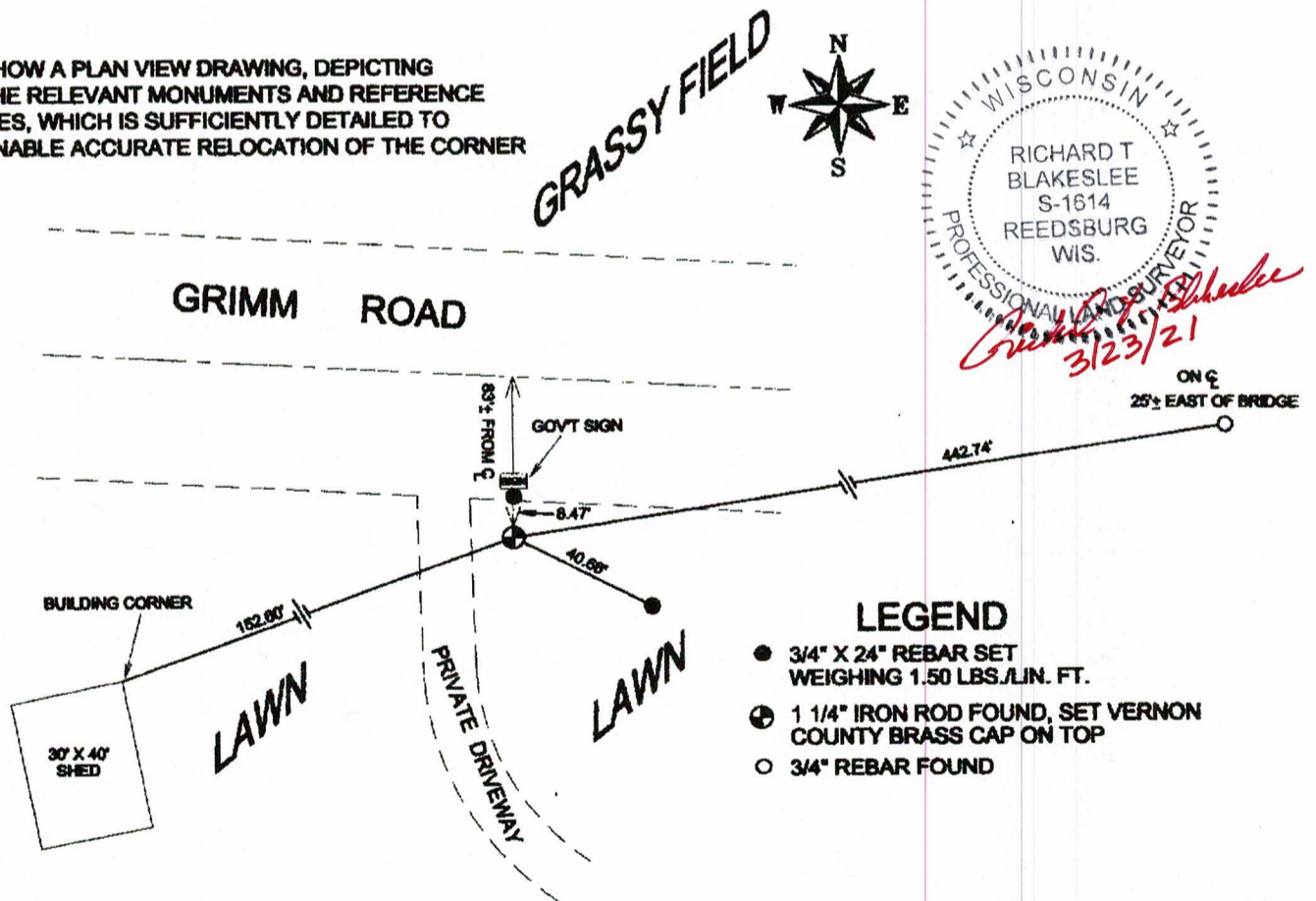
SECTION 30, TOWN 14 NORTH, RANGE 1 EAST

(B) DESCRIBE ANY RECORD EVIDENCE, MONUMENT EVIDENCE, OCCUPATIONAL EVIDENCE, TESTIMONIAL EVIDENCE OR ANY OTHER MATERIAL EVIDENCE YOU CONSIDERED, AND WHETHER THE MONUMENT WAS FOUND OR PLACED.

RESEARCHED ALL VERNON COUNTY SURVEY RECORDS REGARDING THIS CORNER. FOUND THAT THE ORIGINAL CORNER WAS SET IN 1839 PER GOVERNMENT NOTES. WE FOUND THAT COUNTY SURVEYOR E. OLDEN USED THIS CORNER TO SUBDIVIDE SECTION 30 IN 1904. AFTER A THOROUGH SEARCH OF THE AREA WE COULD NOT FIND ANY EVIDENCE OF THE BEARING TREES MADE AS THE ENTIRE AREA ADJACENT TO THIS CORNER HAS BEEN DISTURBED DUE TO THE CONSTRUCTION OF A ROAD AND A DWELLING. WE ACCEPTED THIS FOUND MONUMENT AS THE BEST AVAILABLE EVIDENCE OF THE ORIGINAL CORNER'S POSITION. WE ATTACHED A VERNON COUNTY BRASS CAP TO THE IRON ROD AND ESTABLISHED COUNTY COORDINATES ON IT.

(C) IN THE PLAN VIEW DRAWING BELOW, PROVIDE REFERENCE TIES TO AT LEAST 4 WITNESS MONUMENTS OR, IF THE LOCATION IS WITHIN A MUNICIPALITY, TO AT LEAST 2 WITNESS MONUMENTS. (WITNESS MONUMENTS SHALL BE MADE OF CONCRETE, NATURAL STONE, IRON, OR OTHER EQUALLY DURABLE MATERIAL.) DESCRIBE WITNESS MONUMENTS.

(D) SHOW A PLAN VIEW DRAWING, DEPICTING THE RELEVANT MONUMENTS AND REFERENCE TIES, WHICH IS SUFFICIENTLY DETAILED TO ENABLE ACCURATE RELOCATION OF THE CORNER



RECEIVED
 AUG 14 2006
 BY: *E. Jacobson*

VERNON COUNTY CERTIFIED U.S. PUBLIC LAND SURVEY MONUMENT RECORD

INSTRUCTIONS: THIS RECORD SHALL SHOW THE LOCATION OF THE CORNER AND SHALL INCLUDE ALL OF THE FOLLOWING ELEMENTS (A-I)

(A) IDENTIFY THE CORNER BY REFERENCE TO THE U.S. PUBLIC LAND SURVEY SYSTEM

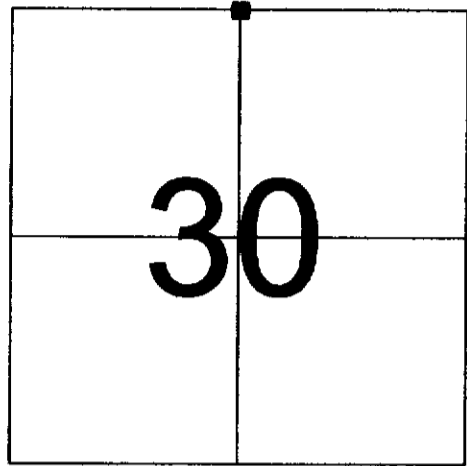
■ = CORNER MONUMENT RESTORED

WITNESSES TO CORNER LOCATION:

- 1) RICHARD BLAKESLEE
- 2) JOSH MURPHY

VERNON COUNTY COORDINATES

NORTHING: 190,083.325
 EASTING: 825,487.770



SECTION 30, TOWN 14 NORTH, RANGE 1 EAST

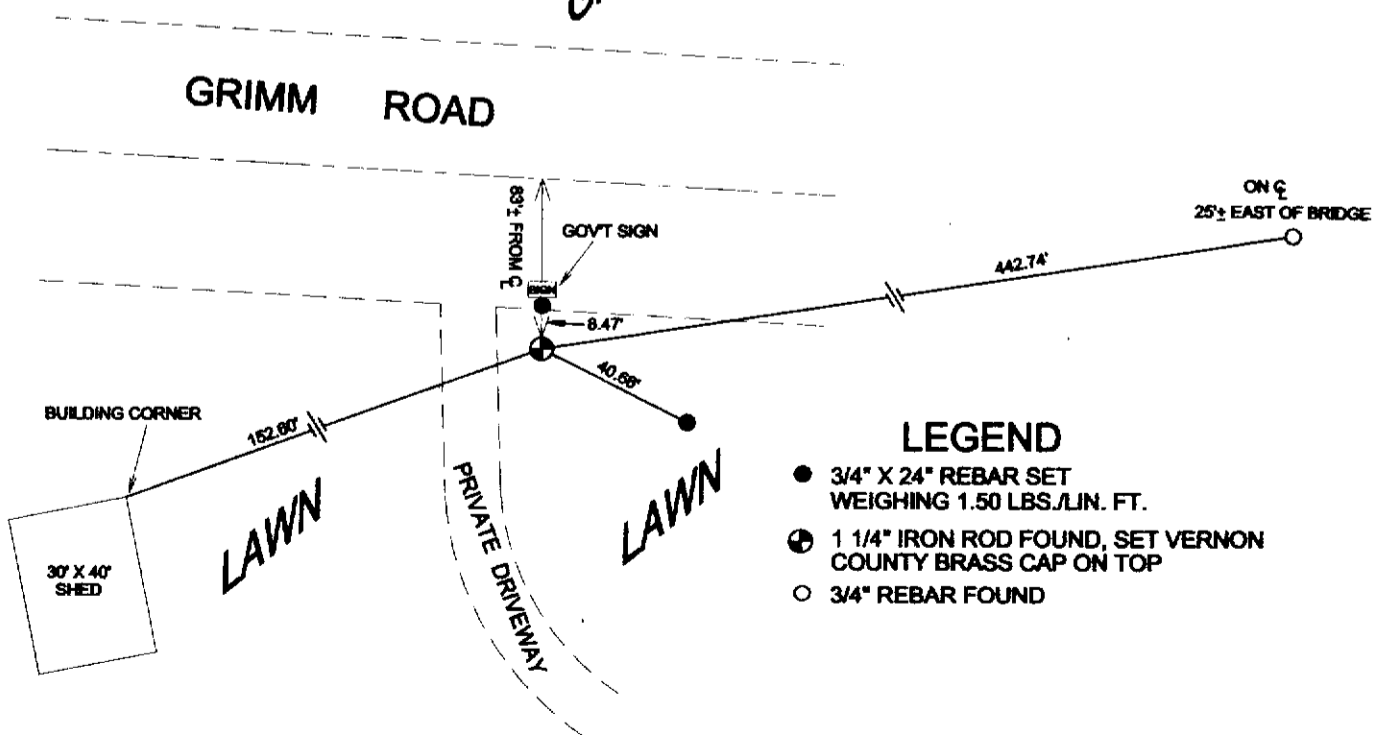
(B) DESCRIBE ANY RECORD EVIDENCE, MONUMENT EVIDENCE, OCCUPATIONAL EVIDENCE, TESTIMONIAL EVIDENCE OR ANY OTHER MATERIAL EVIDENCE YOU CONSIDERED, AND WHETHER THE MONUMENT WAS FOUND OR PLACED.

RESEARCHED ALL VERNON COUNTY SURVEY RECORDS REGARDING THIS CORNER. FOUND THAT THE ORIGINAL CORNER WAS SET IN 1839 PER GOVERNMENT NOTES. WE FOUND THAT COUNTY SURVEYOR E. OLDED USED THIS CORNER TO SUBDIVIDE SECTION 30 IN 1904. AFTER A THOROUGH SEARCH OF THE AREA WE COULD NOT FIND ANY EVIDENCE OF THE BEARING TREES MADE AS THE ENTIRE AREA ADJACENT TO THIS CORNER HAS BEEN DISTURBED DUE TO THE CONSTRUCTION OF A ROAD AND A DWELLING. WE ACCEPTED THIS FOUND MONUMENT AS THE BEST AVAILABLE EVIDENCE OF THE ORIGINAL CORNER'S POSITION. WE ATTACHED A VERNON COUNTY BRASS CAP TO THE IRON ROD AND ESTABLISHED COUNTY COORDINATES ON IT.

(C) IN THE PLAN VIEW DRAWING BELOW, PROVIDE REFERENCE TIES TO AT LEAST 4 WITNESS MONUMENTS OR, IF THE LOCATION IS WITHIN A MUNICIPALITY, TO AT LEAST 2 WITNESS MONUMENTS. (WITNESS MONUMENTS SHALL BE MADE OF CONCRETE, NATURAL STONE, IRON, OR OTHER EQUALLY DURABLE MATERIAL.) DESCRIBE WITNESS MONUMENTS.

(D) SHOW A PLAN VIEW DRAWING, DEPICTING THE RELEVANT MONUMENTS AND REFERENCE TIES, WHICH IS SUFFICIENTLY DETAILED TO ENABLE ACCURATE RELOCATION OF THE CORNER

GRASSY FIELD



LEGEND

- 3/4" X 24" REBAR SET WEIGHING 1.50 LBS./LIN. FT.
- ⊙ 1 1/4" IRON ROD FOUND, SET VERNON COUNTY BRASS CAP ON TOP
- 3/4" REBAR FOUND

(E) DESCRIBE ANY MATERIAL DISCREPANCY BETWEEN THE LOCATION OF THE CORNER AS RESTORED OR REESTABLISHED AND THE LOCATION OF THAT CORNER AS PREVIOUSLY RESTORED OR REESTABLISHED BY DISTANCE AND DIRECTION. SHOW THE DISCREPANCY ON THE PLAN VIEW DRAWING UNDER (D), ABOVE. SHOW THE DISTANCES BETWEEN THE CORNER AS PREVIOUSLY RESTORED OR REESTABLISHED AND (1) THE CORNER AS RESTORED OR REESTABLISHED, AND (2) TO AT LEAST 2 OF THE WITNESS MONUMENTS AS SHOWN ON THE DRAWING IN (D), ABOVE.

By prorating this corner's location the corner would fall 20'±, East of it's current location. We found that the existing fence corners located adjacent to the corner fit best using the found monumented location.

(F) WAS THE CORNER RESTORED THROUGH ACCEPTANCE OF (1) AN OBLITERATED EVIDENCE LOCATION, OR (2) A FOUND PERPETUATED LOCATION?

(G & H) WAS THE CORNER REESTABLISHED THROUGH LOST CORNER PROPORTIONATE METHODS? IF SO SHOW THE METHOD, INCLUDING THE DIRECTIONS AND DISTANCES TO OTHER PUBLIC LAND SURVEY CORNERS USED AS EVIDENCE OR USED FOR PROPORTIONING IN DETERMINING THE CORNER LOCATION.

AFFIX LAND SURVEYOR SEAL

(I) I, RICHARD T. BLAKESLEE CERTIFY THAT THE LOCATION SHOWN ON THIS RECORD WAS DETERMINED BY ME OR UNDER MY DIRECTION AND CONTROL AND THAT THIS U.S. PUBLIC LAND SURVEY MONUMENT RECORD IS CORRECT AND COMPLETE TO THE BEST OF MY KNOWLEDGE AND BELIEF.

Richard T. Blakeslee 8-10-06
SIGNATURE DATE

