

VERNON COUNTY CERTIFIED U.S. PUBLIC LAND SURVEY MONUMENT RECORD

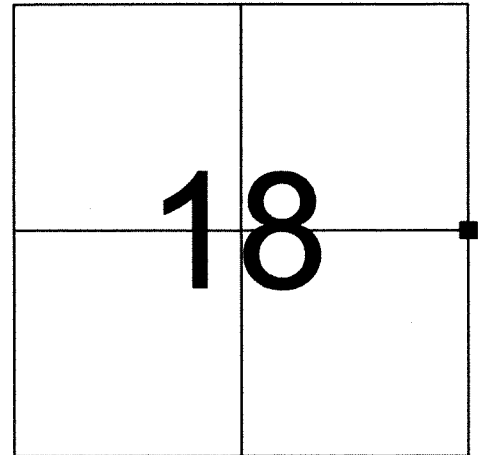
INSTRUCTIONS: THIS RECORD SHALL SHOW THE LOCATION OF THE CORNER AND SHALL INCLUDE ALL OF THE FOLLOWING ELEMENTS (A-I)

(A) IDENTIFY THE CORNER BY REFERENCE TO THE U.S. PUBLIC LAND SURVEY SYSTEM

■ = CORNER MONUMENT RESTORED

WITNESSES TO CORNER LOCATION:
1) RICHARD BLAKESLEE
2) JOSH MURPHY

VERNON COUNTY COORDINATES
NORTHING: 198118.49
EASTING: 828110.72



SECTION 18, TOWN 14 NORTH, RANGE 1 EAST

(B) DESCRIBE ANY RECORD EVIDENCE, MONUMENT EVIDENCE, OCCUPATIONAL EVIDENCE, TESTIMONIAL EVIDENCE OR ANY OTHER MATERIAL EVIDENCE YOU CONSIDERED, AND WHETHER THE MONUMENT WAS FOUND OR PLACED.

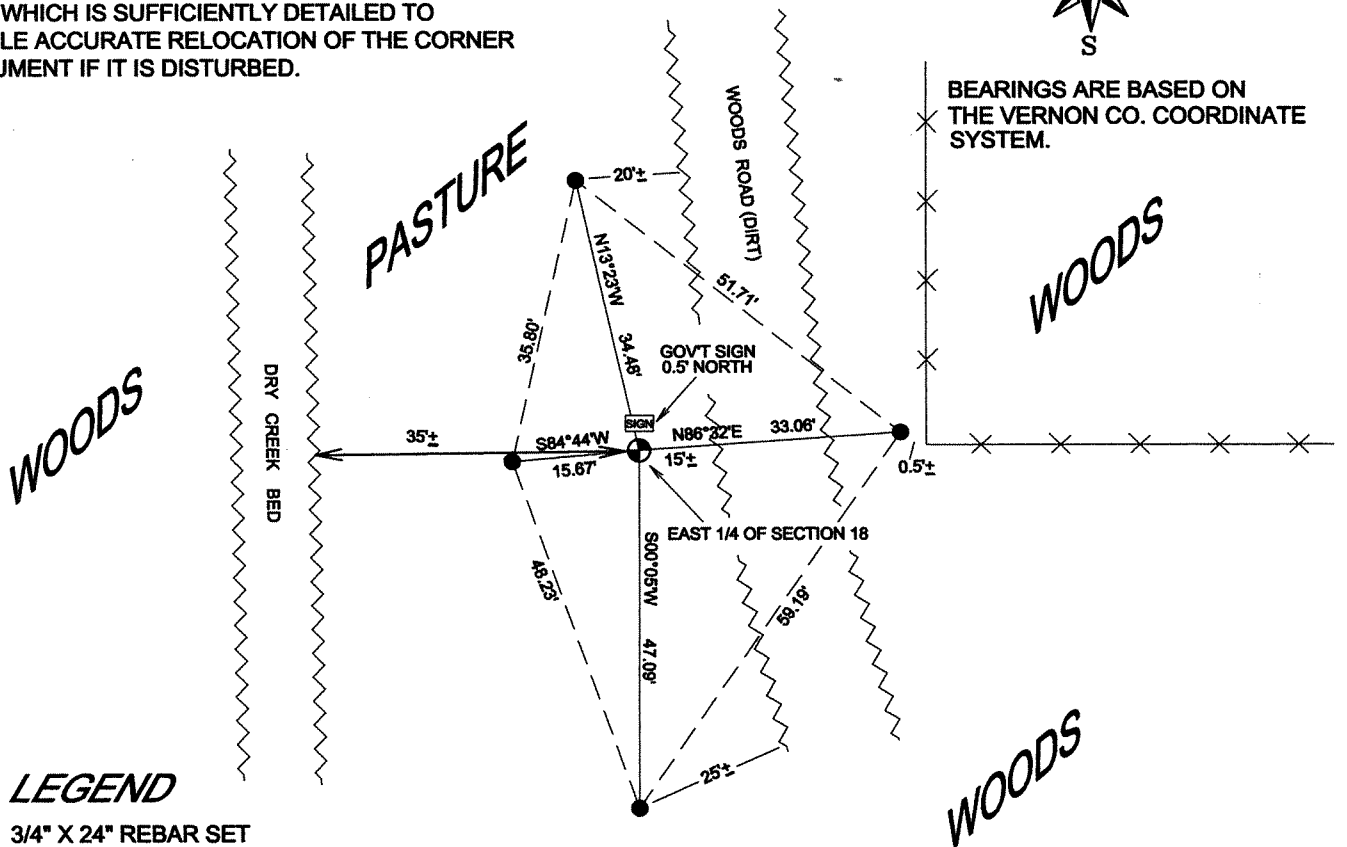
ORIGINAL GOVERNMENT CORNER SET IN 1845. COUNTY SURVEYOR KNOWER USED THIS CORNER IN 1886 (SEE VERNON COUNTY SURVEY RECORDS VOL. 1 ON PAGE 284) WHILE SUBDIVIDING SECTION 18, T14N, R1E. AT THAT TIME HE RECORDED MAKING TWO NEW BEARING TREES. WE WERE UNABLE TO FIND ANY EVIDENCE OF THE BEARING TREES. WE WERE TAKEN TO THIS CORNERS LOCATION BY LONG TIME RESIDENT STUART WALKER WHO SHOWED US THE LOCATION OF THE OLD FENCE CORNER WHICH WAS SHOWN TO HIM BY HIS FATHER 50 YEARS AGO. WE FOUND OLD WIRE BURIED IN THE GROUND AT THE OLD FENCE CORNERS LOCATION. WE MONUMENTED THIS POSITION WITH A VERNON COUNTY LUNDE MONUMENT.

(C) IN THE PLAN VIEW DRAWING BELOW, PROVIDE REFERENCE TIES TO AT LEAST 4 WITNESS MONUMENTS OR, IF THE LOCATION IS WITHIN A MUNICIPALITY, TO AT LEAST 2 WITNESS MONUMENTS. (WITNESS MONUMENTS SHALL BE MADE OF CONCRETE, NATURAL STONE, IRON, OR OTHER EQUALLY DURABLE MATERIAL.) DESCRIBE WITNESS MONUMENTS.

(D) SHOW A PLAN VIEW DRAWING, DEPICTING THE RELEVANT MONUMENTS AND REFERENCE TIES, WHICH IS SUFFICIENTLY DETAILED TO ENABLE ACCURATE RELOCATION OF THE CORNER MONUMENT IF IT IS DISTURBED.



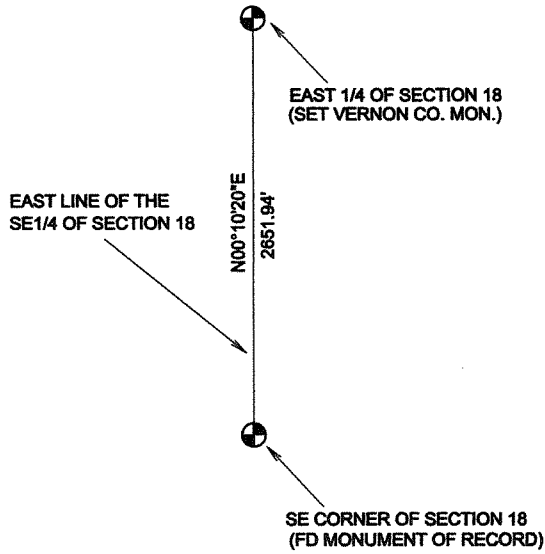
BEARINGS ARE BASED ON THE VERNON CO. COORDINATE SYSTEM.



LEGEND

- 3/4" X 24" REBAR SET WEIGHING 1.50 LBS./LIN. FT.
- ⊕ LUNDE MONUMENT SET

(E) DESCRIBE ANY MATERIAL DISCREPANCY BETWEEN THE LOCATION OF THE CORNER AS RESTORED OR REESTABLISHED AND THE LOCATION OF THAT CORNER AS PREVIOUSLY RESTORED OR REESTABLISHED BY DISTANCE AND DIRECTION. SHOW THE DISCREPANCY ON THE PLAN VIEW DRAWING UNDER (D), ABOVE. SHOW THE DISTANCES BETWEEN THE CORNER AS PREVIOUSLY RESTORED OR REESTABLISHED AND (1) THE CORNER AS RESTORED OR REESTABLISHED, AND (2) TO AT LEAST 2 OF THE WITNESS MONUMENTS AS SHOWN ON THE DRAWING IN (D), ABOVE.



(F) WAS THE CORNER RESTORED THROUGH ACCEPTANCE OF (1) AN OBLITERATED EVIDENCE LOCATION, OR (2) A FOUND PERPETUATED LOCATION?

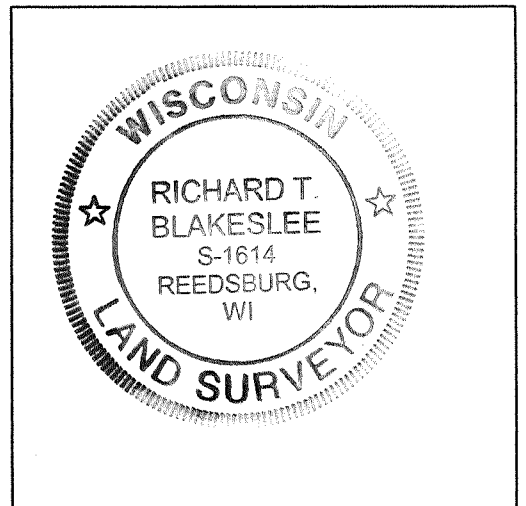
THIS CORNER WAS RE-ESTABLISHED BY USING WITNESS TESTIMONY AND VERIFIED BY FINDING EVIDENCE OF THE OLD FENCE CORNER AS SHOWN TO US BY STUART WALKER. MR. WALKER IS 70 YEARS OLD AND HAS LIVED ON THIS FARM HIS WHOLE LIFE.

(G & H) WAS THE CORNER REESTABLISHED THROUGH LOST CORNER PROPORTIONATE METHODS? IF SO SHOW THE METHOD, INCLUDING THE DIRECTIONS AND DISTANCES TO OTHER PUBLIC LAND SURVEY CORNERS USED AS EVIDENCE OR USED FOR PROPORTIONING IN DETERMINING THE CORNER LOCATION.

NO

(I) I, RICHARD T. BLAKESLEE CERTIFY THAT THE LOCATION SHOWN ON THIS RECORD WAS DETERMINED BY ME OR UNDER MY DIRECTION AND CONTROL AND THAT THIS U.S. PUBLIC LAND SURVEY MONUMENT RECORD IS CORRECT AND COMPLETE TO THE BEST OF MY KNOWLEDGE AND BELIEF.

AFFIX LAND SURVEYOR SEAL



Richard T. Blakeslee 8-9-11
 SIGNATURE DATE

VERNON COUNTY COORDINATE FORM

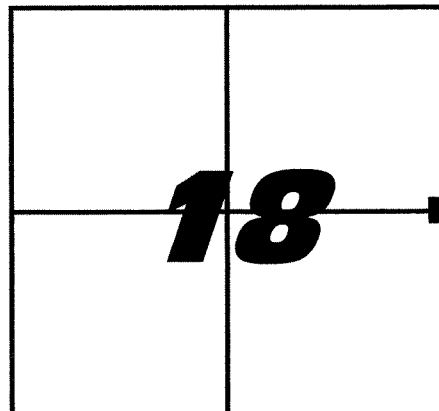
"As An Addendum To"

A CERTIFIED U.S. PUBLIC LAND SURVEY MONUMENT RECORD

INSTRUCTIONS: THIS RECORD FORM SHOULD BE USED WHEN COORDINATES ARE PROVIDED FOR A PUBLIC LAND SURVEY CORNER AND SHALL INCLUDE ALL OF THE FOLLOWING ELEMENTS (A-D)

(A) IDENTIFY THE CORNER BY REFERENCE TO THE U.S. PUBLIC LAND SURVEY SYSTEM IN DIAGRAM AT RIGHT

■ = CORNER MONUMENT



(B) COORDINATES:

GEOGRAPHIC (Degrees Minutes Decimal Seconds to 4 places):

LATITUDE: 43°41'24.4505"N

LONGITUDE: 90°24'44.7529"W

VERNON COUNTY (U.S. FEET)

Coord. Quality (+/-)

NORTHING (Y): 198118.49

0.05'

EASTING (X): 828110.72

0.05'

METHOD USED TO COMPUTE COORDINATES (check and complete as applicable):

RTK Observations Static Baselines OPUS Solution (attach copy of OPUS report)

Combination of conventional procedures with GPS observations to set temporary control

Was a Least Squares Adjustment Used to Compute Coordinate? Yes

For Non-OPUS Based Solutions, List the Control Stations Used for Coordinate Computations (a minimum of 2 different control stations or 2 different time combinations from the same control station are required):

Control Station Name	Station Coordinates (Lat/Long)	Date	Time
Hillsboro C GPS	43°41'00.31878"N 90°22'30.38246"W	06-27-2011	8a.m.-12p.m.

Forest N GPS	43°42'21.9903"N 90°28'39.30900"W	06-27-2011	8a.m.-12p.m.
--------------	----------------------------------	------------	--------------

* Please List Additional Control Stations Used on Back of Form

When a direct observation of the corner is not possible, and a combination of different GPS and/or conventional procedures must be used to determine coordinate values, provide a brief description of your procedures on the back of form.

(C) REASON FOR COORDINATE SUBMITTAL (check one):

Being Filed With a New U.S. PLS Monument Record

To Correct the Coordinates Listed on a Previously Filed PLS Monument Record

To Provide Coordinates for a Previously Filed PLS Monument Record without Coordinates

To Provide Supplemental Coordinates for a Previously Filed PLS Monument Record

R.L.S. & DATE OF PLS MONUMENT RECORD: _____

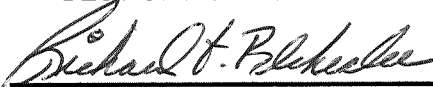
(D) AGENT(S) PERFORMING GPS OBSERVATIONS & COORDINATE COMPUTATION

1) Richard T. Blakelsee

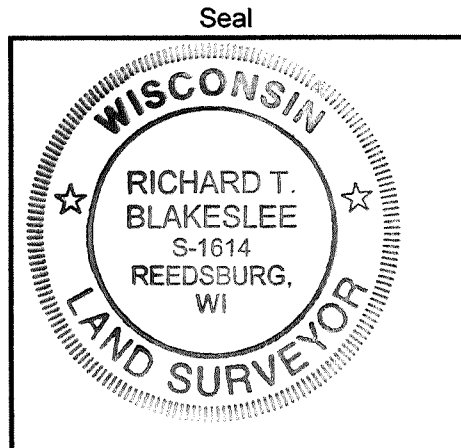
2) Josh Murphy

I, Richard T. Blakelsee

CERTIFY THAT THE COORDINATES PROVIDED ON THIS RECORD WERE DETERMINED BY ME OR UNDER MY DIRECTION AND CONTROL AND THAT THIS COORDINATE SUBMISSION FORM IS CORRECT AND COMPLETE TO THE BEST OF MY KNOWLEDGE AND BELIEF.


SIGNATURE

(Revised)
August 09, 2011
DATE



* Please Provide Any Additional Notes/Information on Back of Form

E 1/4 - 18 - 14 - 1E

