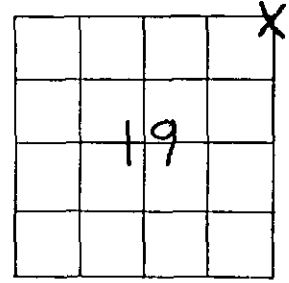


Government Land Corner Certificate

TYPE OF MONUMENT: 2" X 30" IRON PIPE ELEVATION — M.S.L. DATUM: _____
 STATE PLANE COORDINATES: N _____ THETA ANGLE: _____
 Wis. South Zone E _____ FIELD BOOK: _____ PAGE _____

Basis for Monument Location

(Use reverse side if necessary.
 Show info such as: History of corner, with reference to Vol. and page, dates, surveyor; exact description of monument found; if location computed, by taped or EDM traverse; landowner remarks, witnesses, etc.)



LOCATION
 (Indicated by 'X')

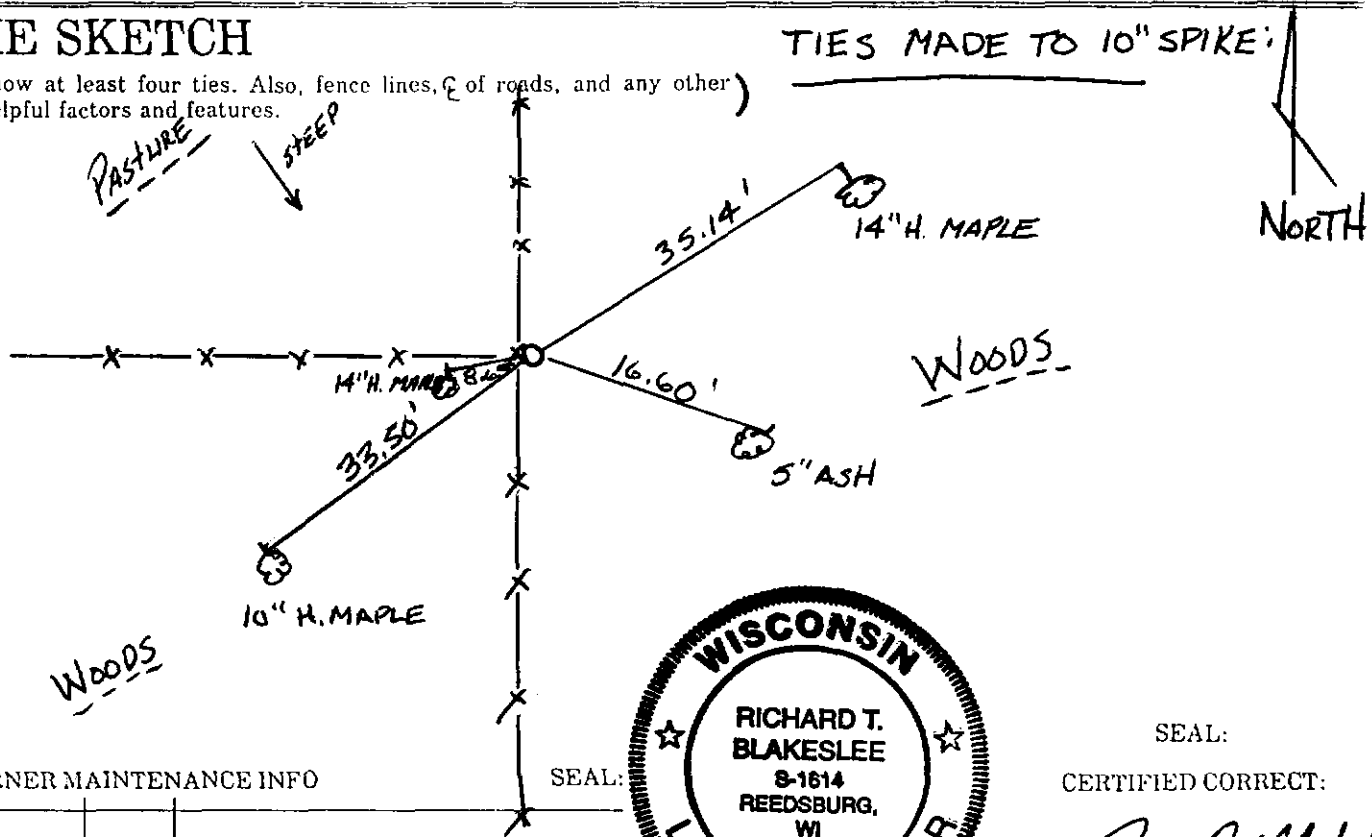
CITY, VILLAGE or TOWN HILLSBORO
 SECTION 19
 TOWN TIAN
 RANGE RIE
 DRAFTED BY BLAKESLEE
 FIELD CREW "

Researched Original Field Notes and all Vernon County Survey Records regarding this corner. We could not find any information of record which could aid us in establishing this corner's perpetuated location. At the occupied corner we found a well maintained fence corner. We accepted the position of the occupied fence corner as the best evidence of this corner's original position.

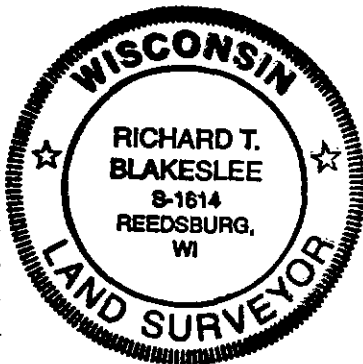
We also looked for any evidence of the new bearing trees as made by County Surveyor Knower in 1888, as recorded in Survey records on Page 284. We could not find any evidence of Knower's new bearing trees.

TIE SKETCH

(Show at least four ties. Also, fence lines, \angle of roads, and any other helpful factors and features.)



CORNER MAINTENANCE INFO



SEAL:
 CERTIFIED CORRECT:
Richard T. Blakeslee
 Registered Land Surveyor
 DATE: 4-29-96

36

For Co. Surveyor Filing Use → CORNER NO. _____

VERNON COUNTY COORDINATE FORM

"As An Addendum To"

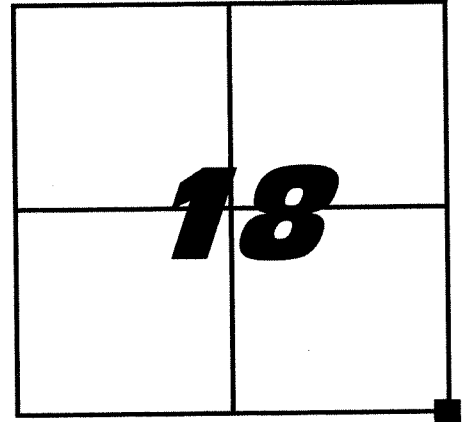
A CERTIFIED U.S. PUBLIC LAND SURVEY MONUMENT RECORD

INSTRUCTIONS: THIS RECORD FORM SHOULD BE USED WHEN COORDINATES ARE PROVIDED FOR A PUBLIC LAND SURVEY CORNER AND SHALL INCLUDE ALL OF THE FOLLOWING ELEMENTS (A-D)

(A) IDENTIFY THE CORNER BY REFERENCE TO THE U.S. PUBLIC LAND SURVEY SYSTEM IN DIAGRAM AT RIGHT

■ = CORNER MONUMENT

LATITUDE 43°40'58.2618"N
LONGITUDE 90°24'45.0225"W



VERNON COUNTY (U.S. FEET)

Coord. Quality (+/-)

NORTHING (Y): 195466.56

0.05

EASTING (X): 828102.74

0.05'

METHOD USED TO COMPUTE COORDINATES (check and complete as applicable):

RTK Observations Static Baselines OPUS Solution (attach copy of OPUS report)

Combination of conventional procedures with GPS observations to set temporary control

Was a Least Squares Adjustment Used to Compute Coordinate? Yes

For Non-OPUS Based Solutions, List the Control Stations Used for Coordinate Computations (a minimum of 2 different control stations or 2 different time combinations from the same control station are required):

Control Station Name	Station Coordinates (Lat/Long)	Date	Time
Hillsboro C GPS	43°41'00.31878"N 90°22'30.38246"W	06-27-2011	8a.m.-12p.m.

Forest N GPS	43°42'21.9903"N 90°28'39.30900"W	06-27-2011	8a.m.-12p.m.
--------------	----------------------------------	------------	--------------

* Please List Additional Control Stations Used on Back of Form

When a direct observation of the corner is not possible, and a combination of different GPS and/or conventional procedures must be used to determine coordinate values, provide a brief description of your procedures on the back of form.

(C) REASON FOR COORDINATE SUBMITTAL (check one):

Being Filed With a New U.S. PLS Monument Record

To Correct the Coordinates Listed on a Previously Filed PLS Monument Record

To Provide Coordinates for a Previously Filed PLS Monument Record without Coordinates

To Provide Supplemental Coordinates for a Previously Filed PLS Monument Record

R.L.S. & DATE OF PLS MONUMENT RECORD: _____

(D) AGENT(S) PERFORMING GPS OBSERVATIONS & COORDINATE COMPUTATION

1) Richard T. Blakelsee

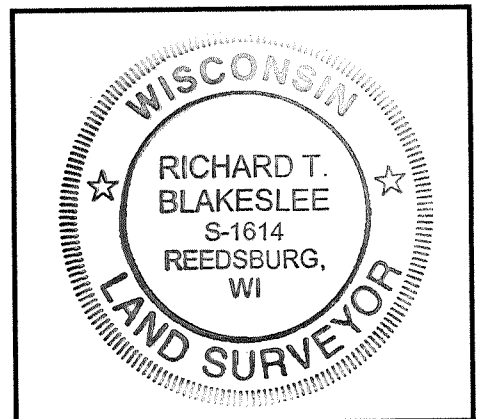
2) Josh Murphy

I, Richard T. Blakelsee
CERTIFY THAT THE COORDINATES PROVIDED ON THIS RECORD WERE DETERMINED BY ME OR UNDER MY DIRECTION AND CONTROL AND THAT THIS COORDINATE SUBMISSION FORM IS CORRECT AND COMPLETE TO THE BEST OF MY KNOWLEDGE AND BELIEF.


SIGNATURE

July 20, 2011
DATE

Seal



* Please Provide Any Additional Notes/Information on Back of Form

196601.55
828136.18

G.P.S.
c.p.

1035.327'

195581.48
827959.06

G.P.S.
c.p.

118°48'13"

183.99'

SE COR 18-14-1E

