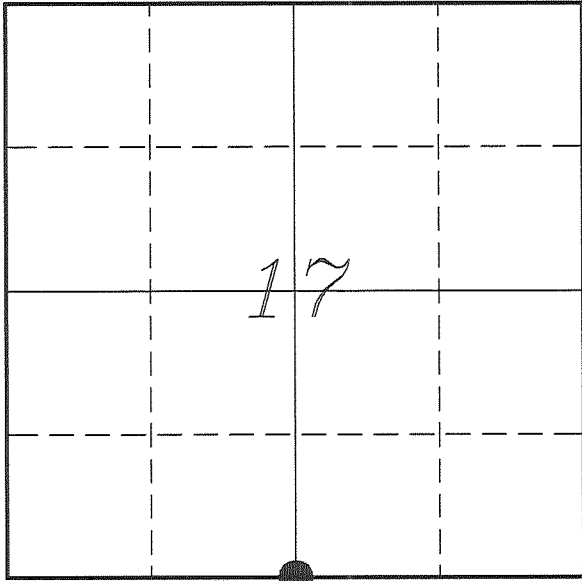


**U. S. PUBLIC LAND SURVEY MONUMENT RECORD**

**SECTION 17, T14N, R1E, TOWN OF HILLSBORO  
VERNON COUNTY, WISCONSIN**



**LOCATION OF LANDMARK**

<i>VERNON COUNTY COORDINATE SYSTEM</i>	
<i>Northing</i>	<i>195528.923</i>
<i>Easting</i>	<i>830790.318</i>
<i>Datum</i>	<i>NAD 1983 (2011)</i>
<i>Elevation</i>	
<i>Datum</i>	
<i>TYPE OF LANDMARK:</i>	
<i>Set Lunde Monument</i>	
<i>4" Brass Capped</i>	
<i>Iron Pipe</i>	
<i>BEARINGS ARE REFERENCED TO:</i>	
<i>Vernon County Coordinates</i>	
<i>(Survey Grade)</i>	

*Witnesses:* Larry Handschy  
Al Hoff

*Eagle Ridge Surveying*  
PO Box 213  
Wilton, Wisconsin

*Date:* 29 June 2017

*Describe any record evidence, monument evidence, testimonial evidence or any other material evidence you considered and whether the monument was found or restored through acceptance of an obliterated evidence location.*

No bearing trees of record were located.

Found the 1" iron pipe set by Cornell and used by others.

This monument is located 27 feet East and 2' North of the mid-point between section corners.

This location fits well with occupation along the quarter lines to the North and South very well and along the section line to the East.

I accepted the location of the 1" iron pipe as the best available evidence of the original government corner and replaced it with a Lunde Monument.

*Describe or show any material discrepancy between the location of the restored corner and that of the corner previously restored or re-established.*

John E Davidson established this corner in December 1852.

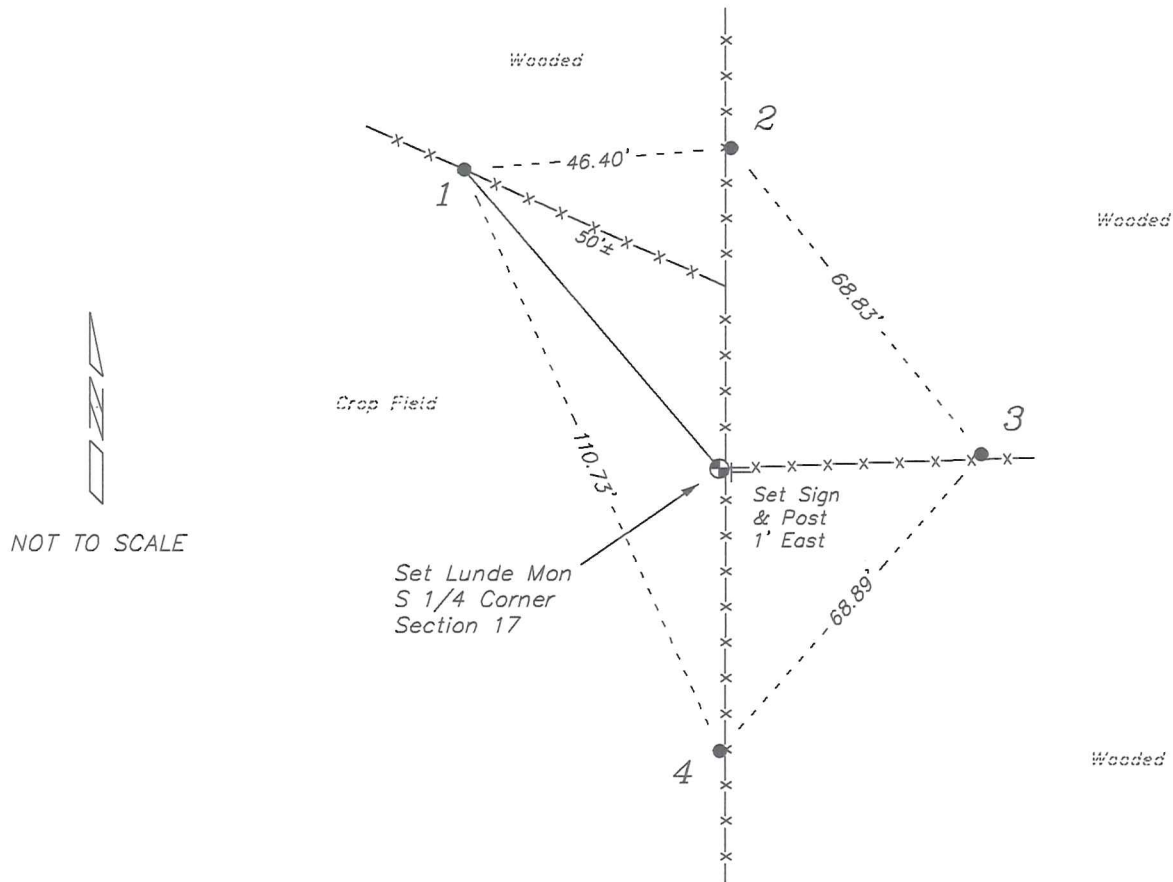
Terry Cornell was at this corner, in August 1993, during a survey in Sections 17 & 20. He shows that he set a 1" iron pipe.

Todd Rummier was at this corner, in January 2002, during survey in Section 17. He shows that he found a 1" iron pipe and prepared a tie sheet.

Patrick Carroll was at this corner, in April 2002, during a survey in Section 17. He shows he found a 1" iron pipe.

## RECORD OF DURABLE WITNESS MONUMENTS

NO	DESCRIPTION	BEARING	DISTANCE
1	Set 3/4" x 18" Iron Rod In Pasture Fence	N 40°13'54" W	68.35'
2	Set 3/4" x 18" Iron Rod In Fence Line	N 02°08'32" E	56.03'
3	Set 3/4" x 18" Iron Rod In Fence Line	N 86°48'52" E	45.51'
4	Set 3/4" x 18" Iron Rod In Fence Line	S 00°06'18" E	49.33'



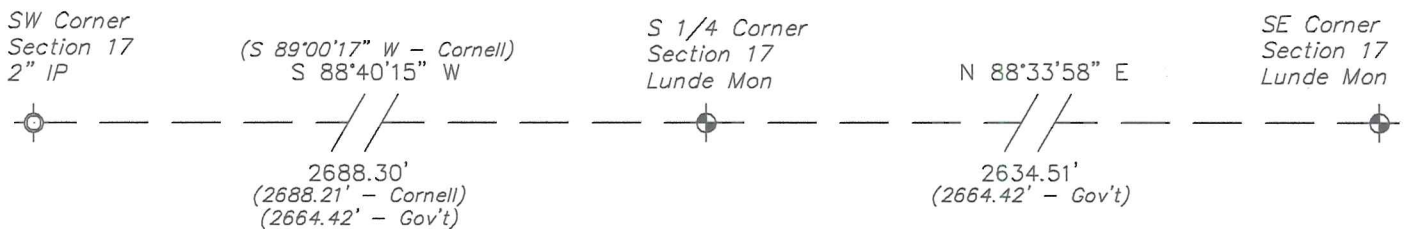
### PLAN VIEW DRAWING OF REFERENCE TIES

Map Showing Distance And Direction To Other Public Land Survey  
Corners Used For Re-Establishing The Corner

**Note:**

Measurements were not made to  
this corner at this time.

Bearings and distances shown are  
based on recorded information and  
shown for reference.



I, Laurence E Johns III PLS 2804, Professional  
Land Surveyor, hereby certify that the corner  
location shown on this record was determined  
by me or under my direction and control, and  
that this U.S. Public Land Survey Monument  
Record is correct and complete to the best of  
my knowledge and belief.



JAN 21 2002

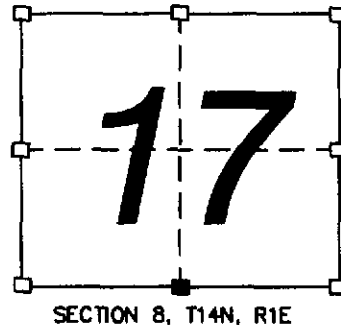
# VERNON COUNTY CERTIFIED U.S. PUBLIC LAND SURVEY MONUMENT RECORD

INSTRUCTIONS: THIS RECORD SHALL SHOW THE LOCATION OF THE CORNER AND SHALL INCLUDE ALL OF THE FOLLOWING NINE ELEMENTS (A THROUGH I)

- (A) IDENTIFY THE CORNER BY REFERENCE TO THE U.S. PUBLIC LAND SURVEY SYSTEM
- = CORNER MONUMENT RESTORED

WITNESSES TO CORNER LOCATION:  
 DAN J. QUINN  
 MICHAEL J. KAST

STATE PLANE COORDINATES (WISCONSIN SOUTH ZONE)  
 NORTHING:  
 EASTING:



- (B) DESCRIBE ANY RECORD EVIDENCE, MONUMENT EVIDENCE, OCCUPATIONAL EVIDENCE, TESTIMONIAL EVIDENCE, OR ANY OTHER MATERIAL EVIDENCE YOU CONSIDERED, AND WHETHER THE MONUMENT WAS FOUND OR PLACED.

THIS CORNER WAS SET BY TERRY CORNELL AND SHOWN ON A SURVEY DATED APRIL 11, 1993. I DID NOT FIND A TIE SHEET FOR THIS CORNER IN THE VERNON COUNTY RECORDS. I ACCEPTED THE 1" IRON PIPE, AS SET BY CORNELL.

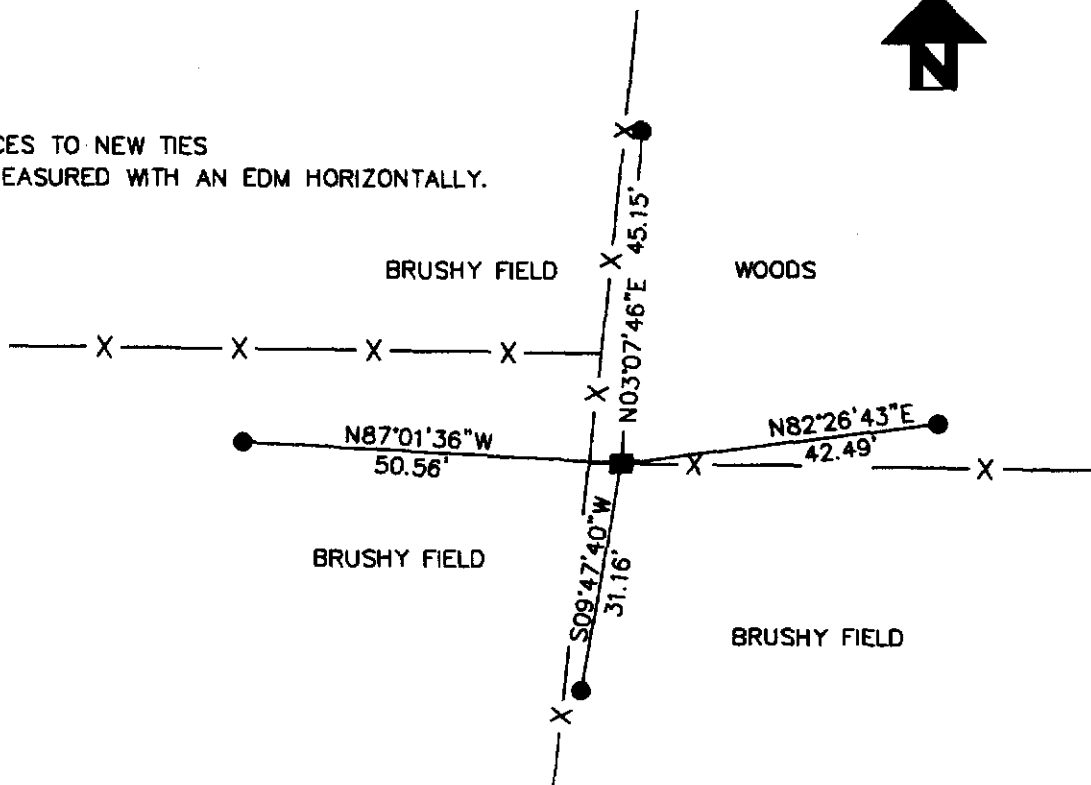
- (C) IN THE PLAN VIEW DRAWING BELOW, PROVIDE REFERENCE TIES TO AT LEAST 4 WITNESS MONUMENTS, OR, IF

- (D) SHOW A PLAN VIEW DRAWING DEPICTING THE RELEVANT MONUMENTS AND

### LEGEND

- 1" IRON PIPE FOUND
- 3/4" X 24" IRON ROD SET AS TIE

DISTANCES TO NEW TIES WERE MEASURED WITH AN EDM HORIZONTALLY.



(E) DESCRIBE ANY MATERIAL DISCREPANCY BETWEEN THE LOCATION OF THE CORNER AS RESTORED OR REESTABLISHED AND THE LOCATION OF THAT CORNER AS PREVIOUSLY RESTORED OR REESTABLISHED BY DISTANCE AND DIRECTION. SHOW THE DISCREPANCY ON THE PLAN VIEW DRAWING UNDER (D), ABOVE. SHOW THE DISTANCES BETWEEN THE CORNER AS PREVIOUSLY RESTORED OR REESTABLISHED AND (1) THE CORNER AS RESTORED OR REESTABLISHED, AND (2) TO AT LEAST 2 OF THE WITNESS MONUMENTS SHOWN ON THE DRAWING IN (D) ABOVE.

NONE

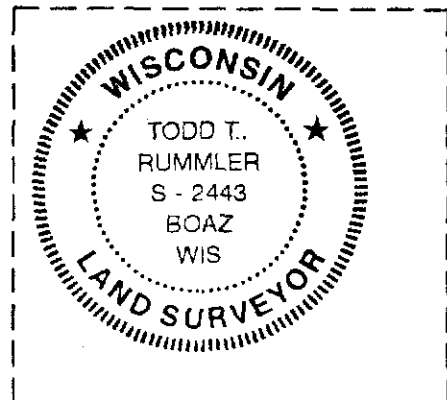
(F) WAS THE CORNER RESTORED THROUGH ACCEPTANCE OF (1) AN OBLITERATED EVIDENCE LOCATION, OR, (2) A FOUND PERPETUATED LOCATION?

(2) A FOUND PERPETUATED LOCATION

(G&H) WAS THE CORNER REESTABLISHED THROUGH LOST CORNER PROPORTIONATE METHODS? IF SO, SHOW THE METHOD, INCLUDING THE DIRECTIONS AND DISTANCES TO OTHER PUBLIC LAND SURVEY CORNERS USED AS EVIDENCE OR USED FOR PROPORTIONING IN DETERMINING THE CORNER LOCATION.

NO.

AFFIX LAND SURVEYOR SEAL



(I) I, TODD T. RUMMLER, R.L.S. - 2443

CERTIFY THAT THE CORNER LOCATION SHOWN ON THIS RECORD WAS DETERMINED BY ME OR UNDER MY DIRECTION AND CONTROL AND THAT THIS U.S. PUBLIC LAND SURVEY MONUMENT RECORD IS CORRECT AND COMPLETE TO THE BEST OF MY KNOWLEDGE AND BELIEF.

Todd T. Rummeler  
SIGNATURE

1/8/02  
DATE