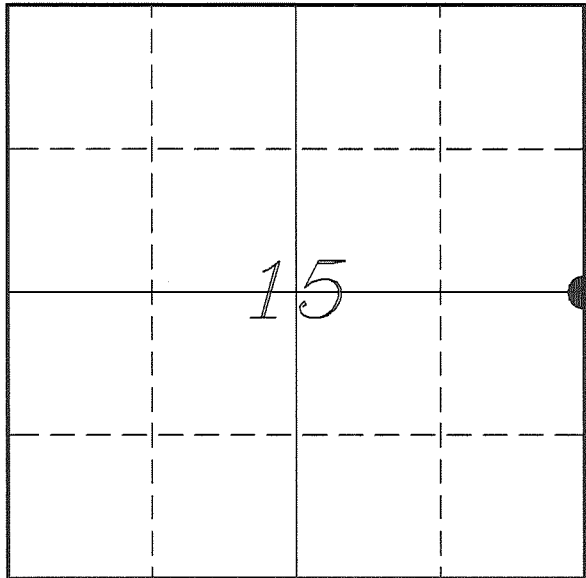


U. S. PUBLIC LAND SURVEY MONUMENT RECORD

**SECTION 15, T14N, R1E, TOWN OF HILLSBORO
VERNON COUNTY, WISCONSIN**



LOCATION OF LANDMARK

<i>VERNON COUNTY COORDINATE SYSTEM</i>	
<i>Northing</i>	<i>198480.508</i>
<i>Easting</i>	<i>843966.753</i>
<i>Datum</i>	<i>NAD 1983 (2011)</i>
<i>Elevation</i>	
<i>Datum</i>	
<i>TYPE OF LANDMARK:</i>	
<i>Set Lunde Monument</i>	
<i>4" Brass Capped</i>	
<i>Iron Pipe</i>	
<i>BEARINGS ARE REFERENCED TO:</i>	
<i>Vernon County Coordinates</i>	
<i>(Survey Grade)</i>	

Witnesses: Larry Handschy
Al Hoff

Eagle Ridge Surveying
PO Box 213
Wilton, Wisconsin

Date: 7 June 2017

Describe any record evidence, monument evidence, testimonial evidence or any other material evidence you considered and whether the monument was found or restored through acceptance of an obliterated evidence location.

Found the 1 1/4" iron rod set by Blakeslee in the field.

My previous survey in 2016, I inadvertently used the wrong monument for this corner. I had used a tie and not the corner.

Blakeslee tie sheet shows extensive measurements and using other monumentation in the section to determine this corner.

I accepted his corner as the best available evidence of the original government corner and replaced it with a Lunde Monument. Due to the field being used for farming, I placed the monument 18" below the surface.

Describe or show any material discrepancy between the location of the restored corner and that of the corner previously restored or re-established.

John E Davidson established this corner in December 1852.

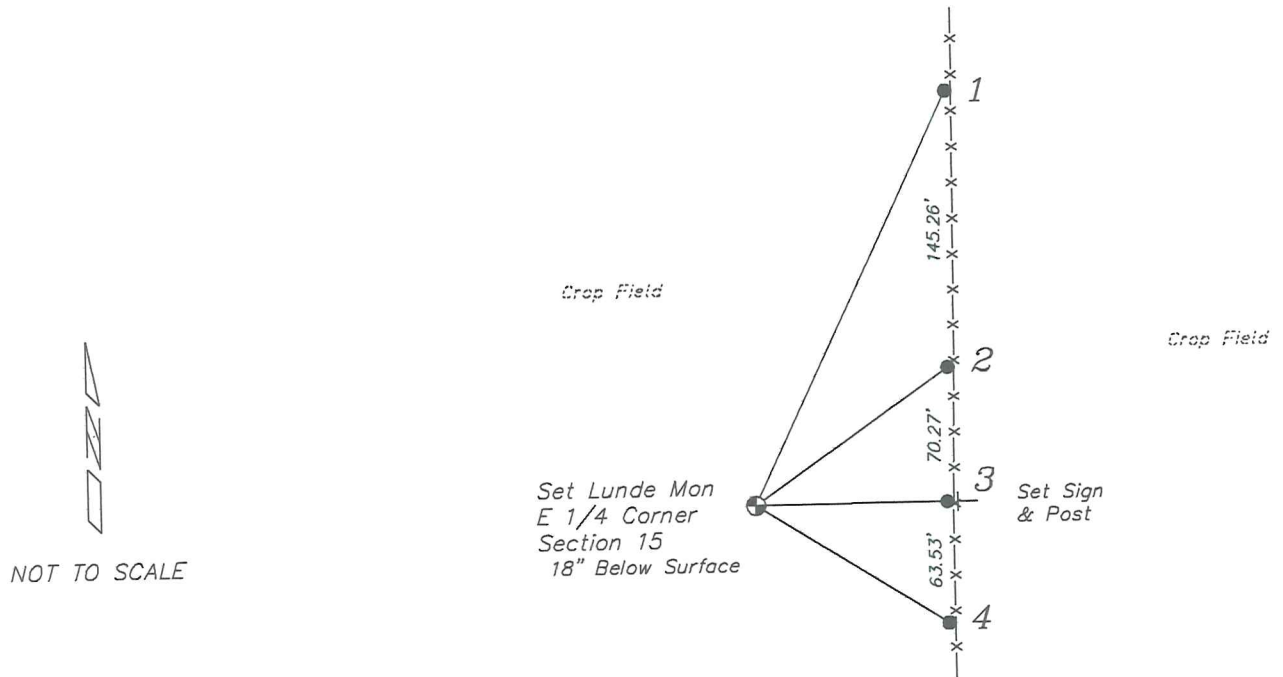
Richard Blakeslee was at this corner, in March 2003, during a survey in Section 14. He shows he set an 1 1/4" iron bar and prepared a tie sheet.

Gregory Fauerbach was at this corner, in August 2009, during a survey in Section 15. He shows finding a 1 1/4" iron rod.

Laurence Johns was at this corner, in July 2016, during a survey in Sections 14 & 23. He shows that he found a 3/4" iron rod.

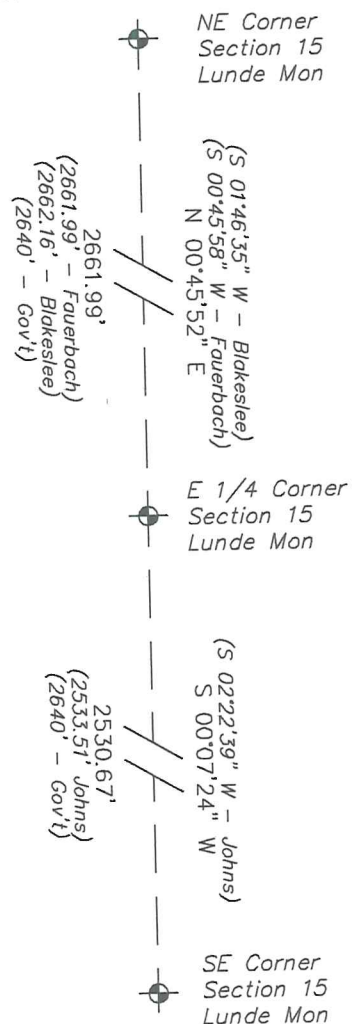
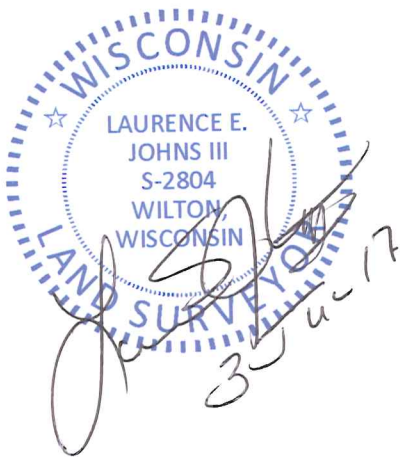
RECORD OF DURABLE WITNESS MONUMENTS

NO	DESCRIPTION	BEARING	DISTANCE
1	Existing 3/4" Iron Rod From Blakeslee Tie Sheet	N 25°19'59" E	238.90'
2	Set 3/4" x 18" Iron Rod In Fence Line	N 54°59'57" E	123.21'
3	Existing 3/4" Iron Rod From Blakeslee Tie Sheet	N 89°45'38" E	99.53'
4	Set 3/4" x 18" Iron Rod In Fence Line	S 57°35'01" E	117.73'



PLAN VIEW DRAWING OF REFERENCE TIES

Map Showing Distance And Direction To Other Public Land Survey Corners Used For Re-Establishing The Corner



I, Laurence E Johns III PLS 2804, Professional Land Surveyor, hereby certify that the corner location shown on this record was determined by me or under my direction and control, and that this U.S. Public Land Survey Monument Record is correct and complete to the best of my knowledge and belief.

VERNON COUNTY CERTIFIED U.S. PUBLIC LAND SURVEY MONUMENT RECORD

INSTRUCTIONS: THIS RECORD SHALL SHOW THE LOCATION OF THE CORNER AND SHALL INCLUDE ALL OF THE FOLLOWING ELEMENTS (A-I)

(A) IDENTIFY THE CORNER BY REFERENCE TO THE U.S. PUBLIC LAND SURVEY SYSTEM

W $\frac{1}{4}$ corner of Section 14 T14N, R1E
 ■ = CORNER MONUMENT RESTORED

1 $\frac{1}{4}$ " x 24" Re-Bar set

WITNESSES TO CORNER LOCATION:

- 1) Richard Blakeslee
- 2) Josh Murphy
- 3)

STATE PLANE COORDINATES (WISCONSIN SOUTH ZONE)

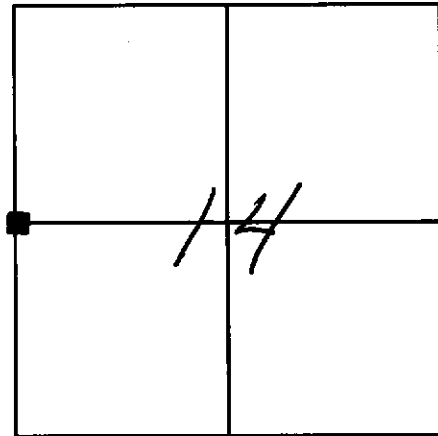
NORTHING:

EASTING:

VERNON COUNTY COORDINATES

NORTHING:

EASTING:



SECTION 14 TOWN 14 NORTH, RANGE 1 EAST ~~WEST~~

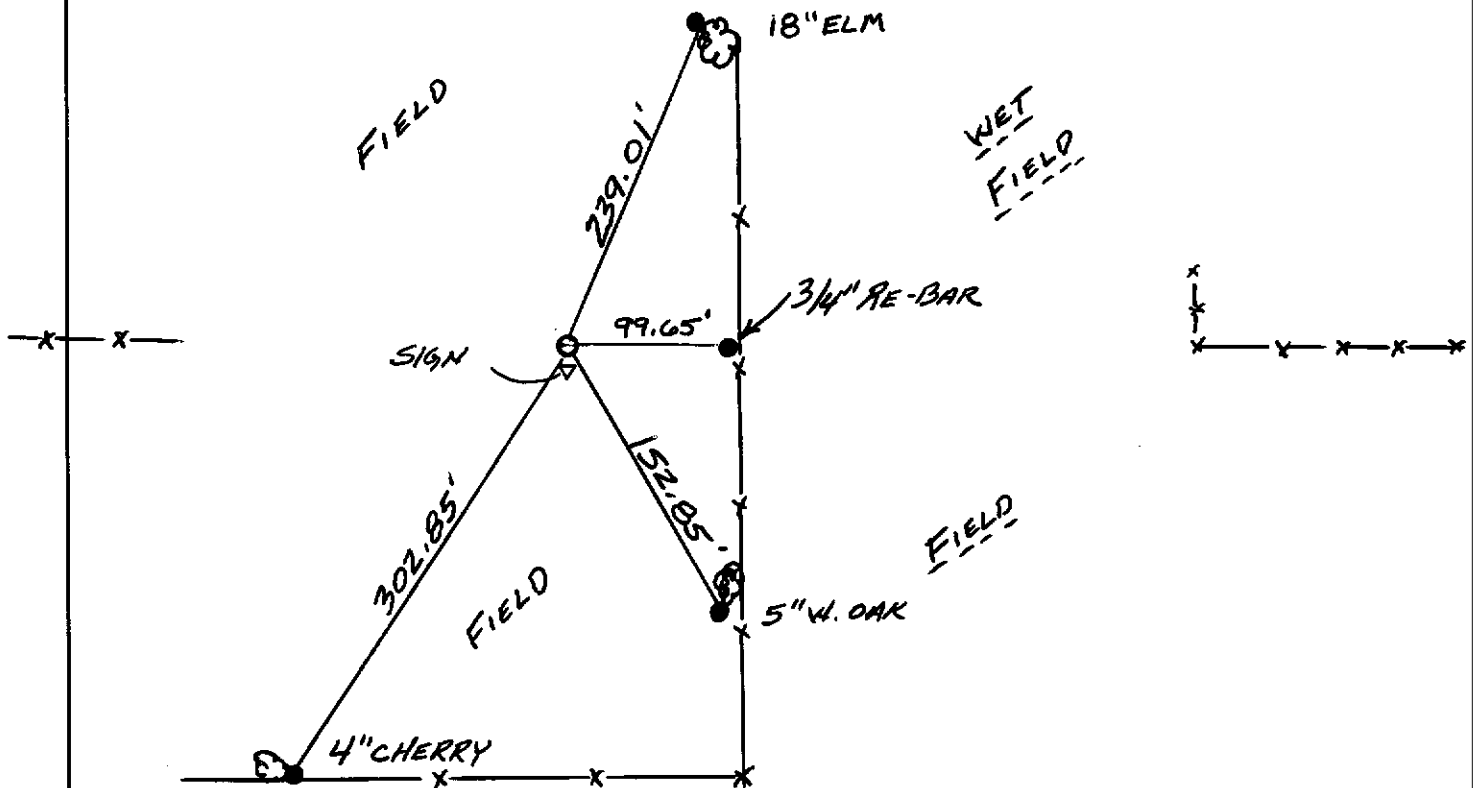
(B) DESCRIBE ANY RECORD EVIDENCE, MONUMENT EVIDENCE, OCCUPATIONAL EVIDENCE, TESTIMONIAL EVIDENCE OR ANY OTHER MATERIAL EVIDENCE YOU CONSIDERED, AND WHETHER THE MONUMENT WAS FOUND OR PLACED.

Researched all Vernon County survey records regarding this corner. We could not find any record of this corner being perpetuated or used in any early surveys. Location has been disturbed by farming other than an old field edge hump. This hump is evidence that once there was an east-west fence running to this corners location. There is a deed to the East which calls for a strip of land 6 rods in width lying along the West line of the NW $\frac{1}{4}$ of Section 14, we used the property

(C) IN THE PLAN VIEW DRAWING BELOW, PROVIDE REFERENCE TIES TO AT LEAST 4 WITNESS MONUMENTS OR, IF THE LOCATION IS WITHIN A MUNICIPALITY, TO AT LEAST 2 WITNESS MONUMENTS. (WITNESS MONUMENTS SHALL BE MADE OF CONCRETE, NATURAL STONE, IRON, OR OTHER EQUALLY DURABLE MATERIAL.) DESCRIBE WITNESS MONUMENTS.

line fence 99' (6 rods) East to position this corners location East and West. This fits well with the occupied forty line East and a 1" Iron Pipe found and accepted

(D) SHOW A PLAN VIEW DRAWING, DEPICTING THE RELEVANT MONUMENTS AND REFERENCE TIES, WHICH IS SUFFICIENTLY DETAILED TO ENABLE ACCURATE RELOCATION OF THE CORNER MONUMENT IF IT IS DISTURBED.



All ties to trees made to 8" spike.

3/4" RE-BAR SET AT BASE.

Gov't sign 0.20 feet South

(E) DESCRIBE ANY MATERIAL DISCREPANCY BETWEEN THE LOCATION OF THE CORNER AS RESTORED OR REESTABLISHED AND THE LOCATION OF THAT CORNER AS PREVIOUSLY RESTORED OR REESTABLISHED BY DISTANCE AND DIRECTION. SHOW THE DISCREPANCY ON THE PLAN VIEW DRAWING UNDER (D), ABOVE. SHOW THE DISTANCES BETWEEN THE CORNER AS PREVIOUSLY RESTORED OR REESTABLISHED AND (1) THE CORNER AS RESTORED OR REESTABLISHED, AND (2) TO AT LEAST 2 OF THE WITNESS MONUMENTS AS SHOWN ON THE DRAWING IN (D), ABOVE.

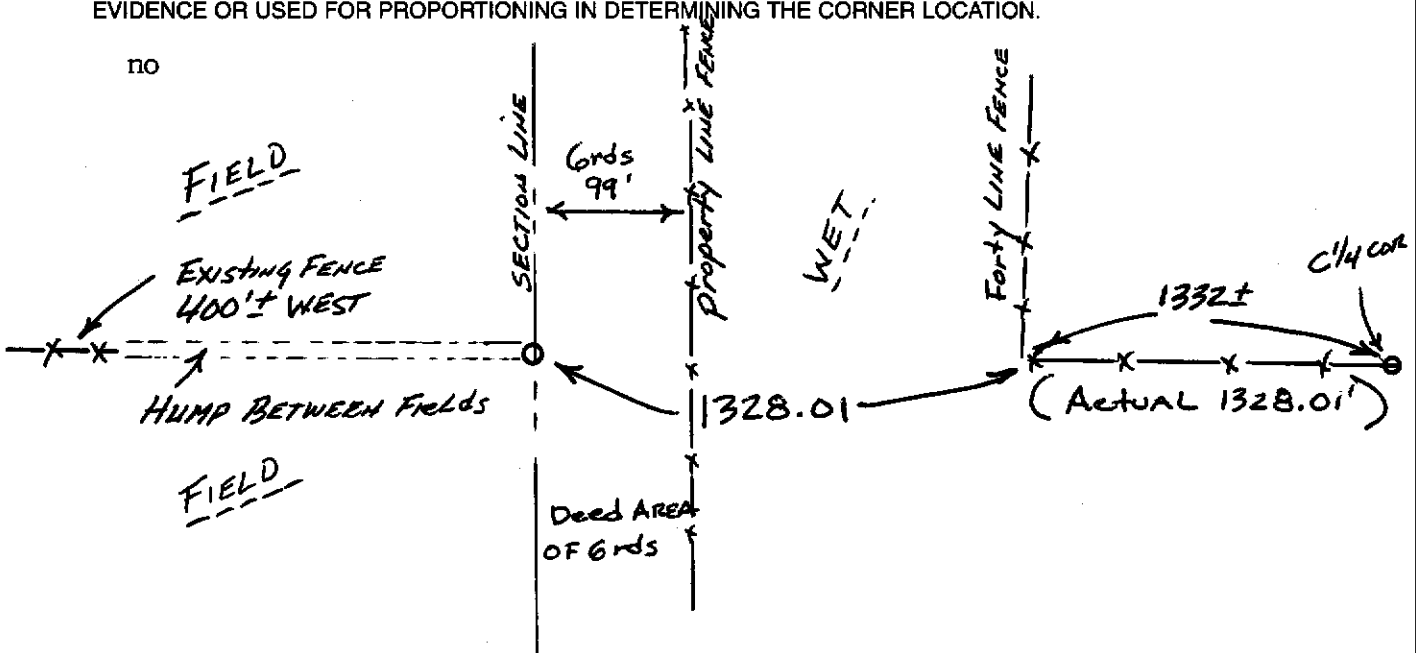
none

(F) WAS THE CORNER RESTORED THROUGH ACCEPTANCE OF (1) AN OBLITERATED EVIDENCE LOCATION, OR (2) A FOUND PERPETUATED LOCATION?

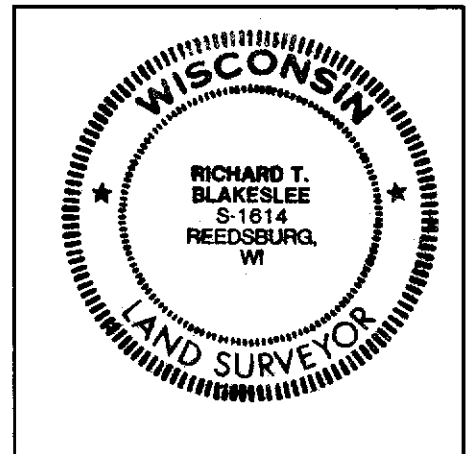
no

(G & H) WAS THE CORNER REESTABLISHED THROUGH LOST CORNER PROPORTIONATE METHODS? IF SO SHOW THE METHOD, INCLUDING THE DIRECTION AND DISTANCES TO OTHER PUBLIC LAND SURVEY CORNERS USED AS EVIDENCE OR USED FOR PROPORTIONING IN DETERMINING THE CORNER LOCATION.

no



AFFIX LAND SURVEYOR SEAL



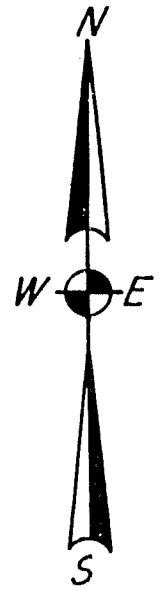
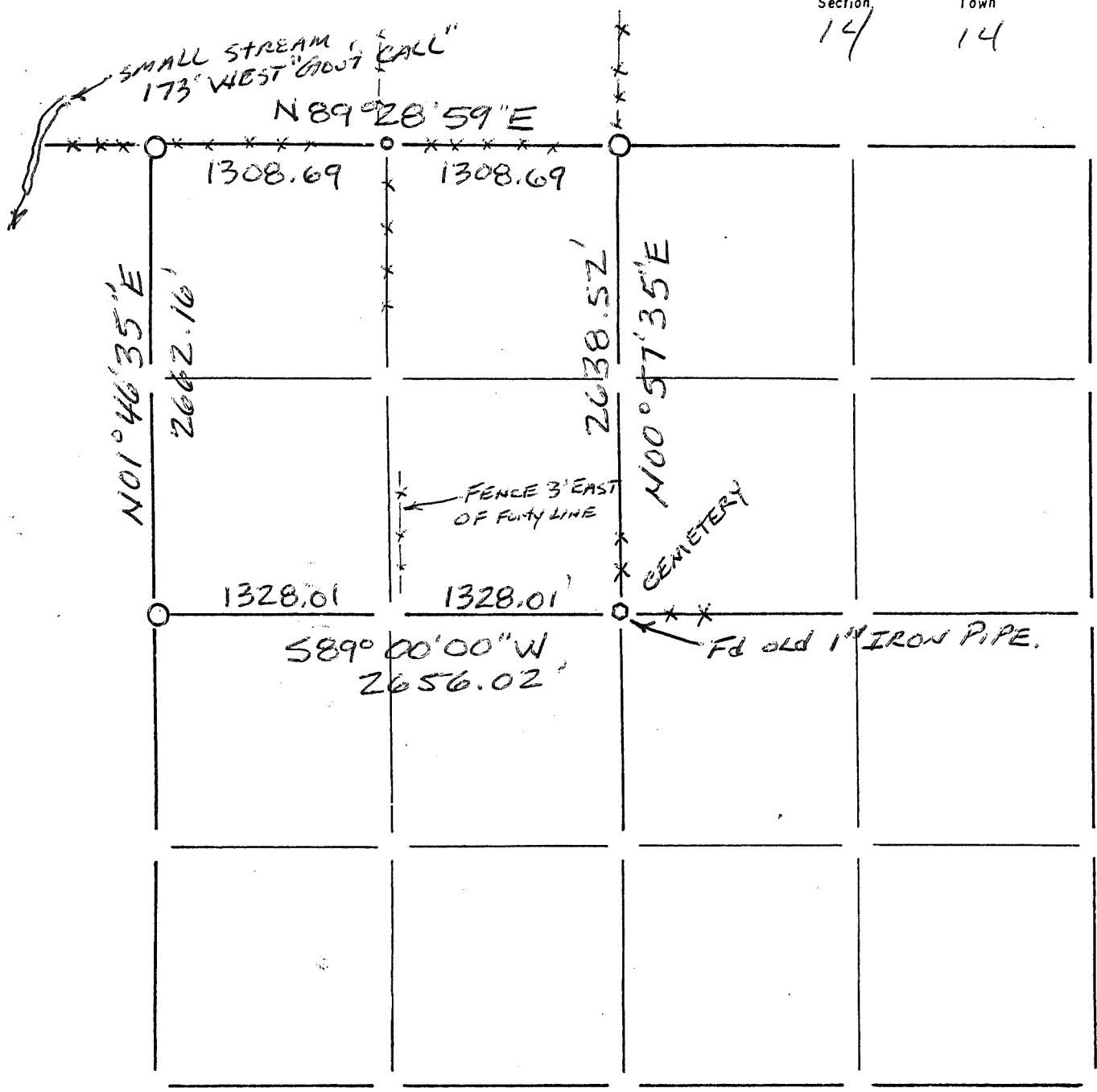
(I) I, Richard Blakeslee CERTIFY THAT THE LOCATION SHOWN ON THIS RECORD WAS DETERMINED BY ME OR UNDER MY DIRECTION AND CONTROL AND THAT THIS U.S. PUBLIC LAND SURVEY MONUMENT RECORD IS CORRECT AND COMPLETE TO THE BEST OF MY KNOWLEDGE AND BELIEF.

Richard T. Blakeslee 03-21-03
SIGNATURE DATE

REVISED 4-14-03 R.T.B.

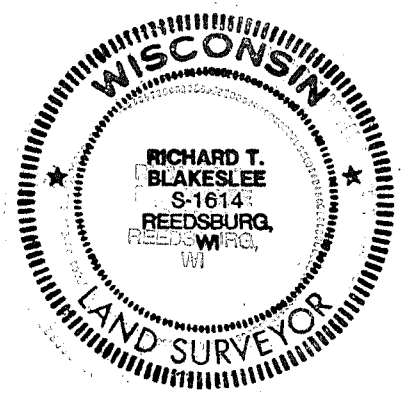
Section Summary and Index

Section 14 - 14 - 1E
 14 14 1E



LEGEND

- ⊕ - Harrison cast iron monument.
- - Stone or concrete monument.
- - Other 1/4" RE-BAR SET
- set 3/4" RE-BAR
- 1" IRON PIPE Fd.



Richard T. Blakeslee
 3-21-03

70