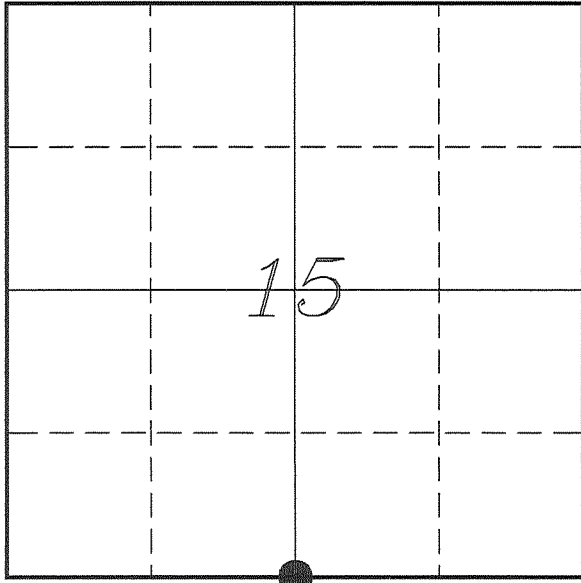


U. S. PUBLIC LAND SURVEY MONUMENT RECORD

**SECTION 15, T14N, R1E, TOWN OF HILLSBORO
VERNON COUNTY, WISCONSIN**



LOCATION OF LANDMARK

<i>VERNON COUNTY COORDINATE SYSTEM</i>	
<i>Northing</i>	<i>195792.872</i>
<i>Easting</i>	<i>841352.520</i>
<i>Datum</i>	<i>NAD 1983 (2011)</i>
<i>Elevation</i>	
<i>Datum</i>	
<i>TYPE OF LANDMARK:</i>	
<i>Set Lunde Monument</i>	
<i>4" Brass Capped</i>	
<i>Iron Pipe</i>	
<i>BEARINGS ARE REFERENCED TO:</i>	
<i>Vernon County Coordinates</i>	
<i>(Survey Grade)</i>	

Witnesses: Laurence E Johns III
Larry Handschy

Eagle Ridge Surveying
PO Box 213
Wilton, Wisconsin

Date: 5 August 2017

Describe any record evidence, monument evidence, testimonial evidence or any other material evidence you considered and whether the monument was found or restored through acceptance of an obliterated evidence location.

No bearing trees of record were located.

The entire area around this corner has been cleared and put into crop since Breneman's survey. There is no evidence of his corner other than the survey he performed.

I retraced his survey and found that his corner may not be correct. It appears that he may have went near due West from from his previously marked SE Corner (which was found in error as well). It also appears to be near due West from occupation at the S 1/4 Corner of Section 14. The East/West bearings in this part of the town run about a S 88° W bearing. His location would put this corner about 160' North of the straight line using his SE Corner. Once the SE Corner was corrected, his corner would be about 195' to far North.

It is of my opinion that the red oak tree stump he found was not an original bearing tree.

I re-established this corner on a straight line between the SW & SE Corners and extending a line from the N 1/4 Corner of Section 15 through the fence corner that is located 480' North.

Due to being in the crop field, I placed the Lunde Monument 18" below the surface. No sign was placed because of the crop field.

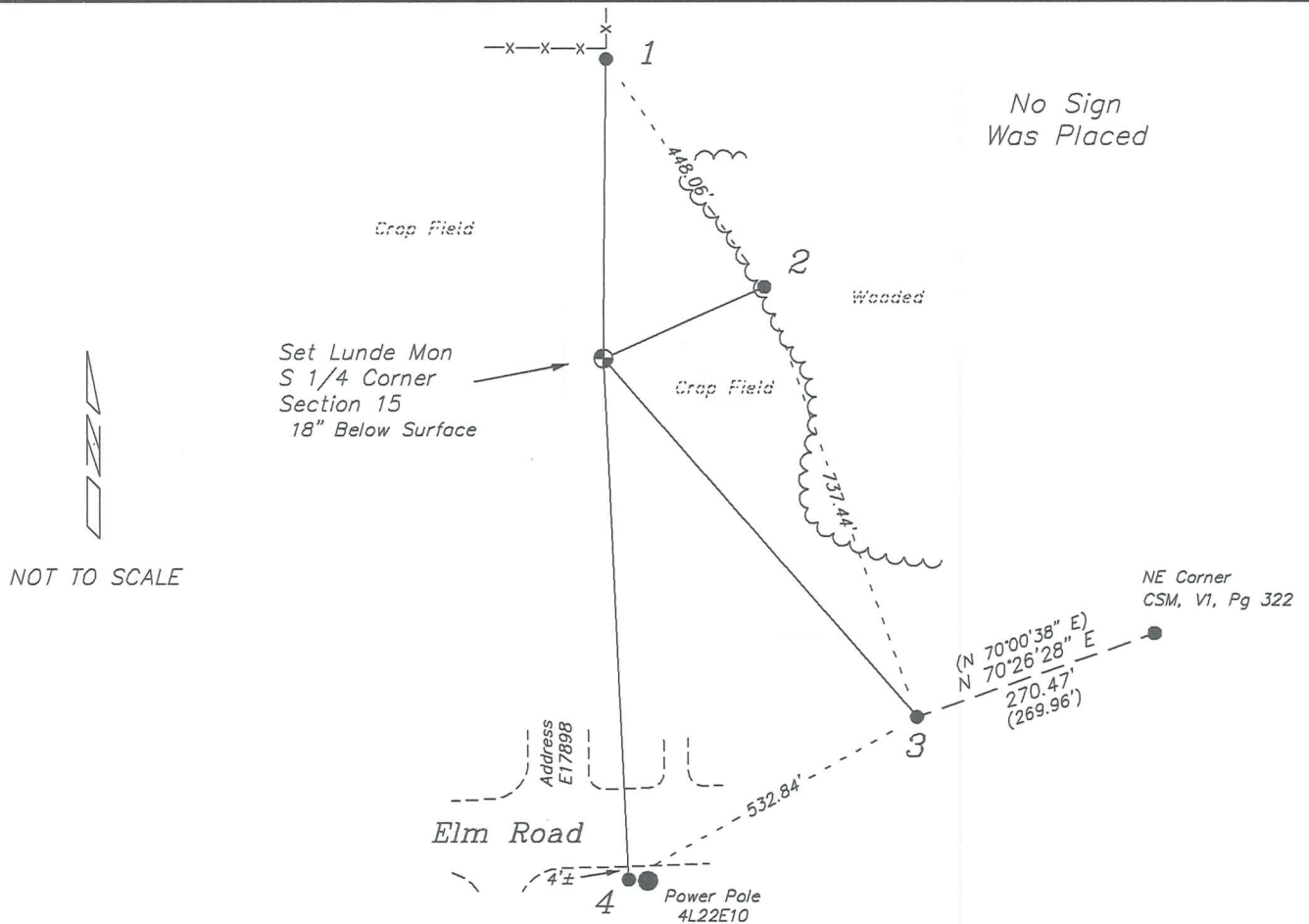
Describe or show any material discrepancy between the location of the restored corner and that of the corner previously restored or re-established.

John E Davidson established this corner in December 1852.

John Breneman was at this corner, in December 1989. He shows he set a 3/4" iron rod and prepared a tie sheet.

RECORD OF DURABLE WITNESS MONUMENTS

NO	DESCRIPTION	BEARING	DISTANCE
1	Set 3/4" x 18" Iron Rod 2' South of a 2-way Fence Corner	N 00°38'07" E	483.76'
2	Set 3/4" x 18" Iron Rod 5' West of a 12" Elm	N 66°08'10" E	284.09'
3	Existing 3/4" Iron Rod NW Corner of Lot 1, CSM, V1, P322	S 40°59'59" E	769.36'
4	Set 3/4" x 18" Iron Rod 1' West of Power Pole 4K22E10	S 02°46'16" E	843.67'

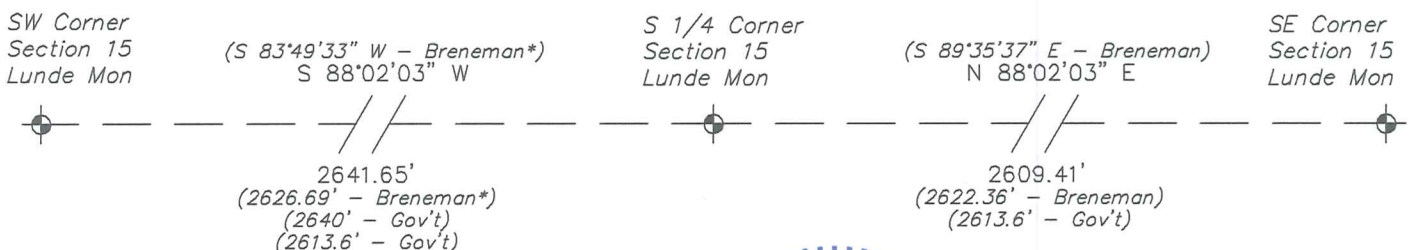


PLAN VIEW DRAWING OF REFERENCE TIES

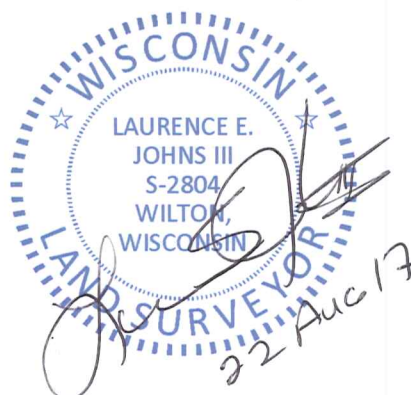
Map Showing Distance And Direction To Other Public Land Survey
Corners Used For Re-Establishing The Corner

* Note:
The Bearing & Distance shown for
Breneman to the West is based on
measurements from the computed
location of Breneman's corner.

This is shown for reference.



I, Laurence E Johns III PLS 2804, Professional
Land Surveyor, hereby certify that the corner
location shown on this record was determined
by me or under my direction and control, and
that this U.S. Public Land Survey Monument
Record is correct and complete to the best of
my knowledge and belief.



MAN 10 24

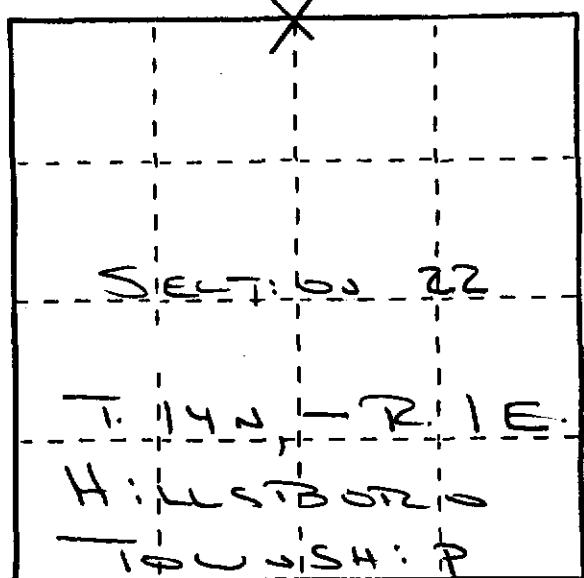
U. S. PUBLIC LAND SURVEY MONUMENT RECORD

VERNON COUNTY

INSTRUCTIONS: This record shall show the location of the corner and shall include all of the following nine elements (a through i).

- (a) Identify the corner by reference to the U.S. public land survey system.
- O = Corner monument restored.

The N. 1/4 corner of Section 22, T. 14 N. R. 1 E. Township of Hillsboro, Vernon County, Wisconsin.
 N 1/4 corner 22-14-1 E.



- (b) Describe any record evidence, monument evidence, occupational evidence, testimonial evidence or any other material evidence you considered, and whether the monument was found or placed.

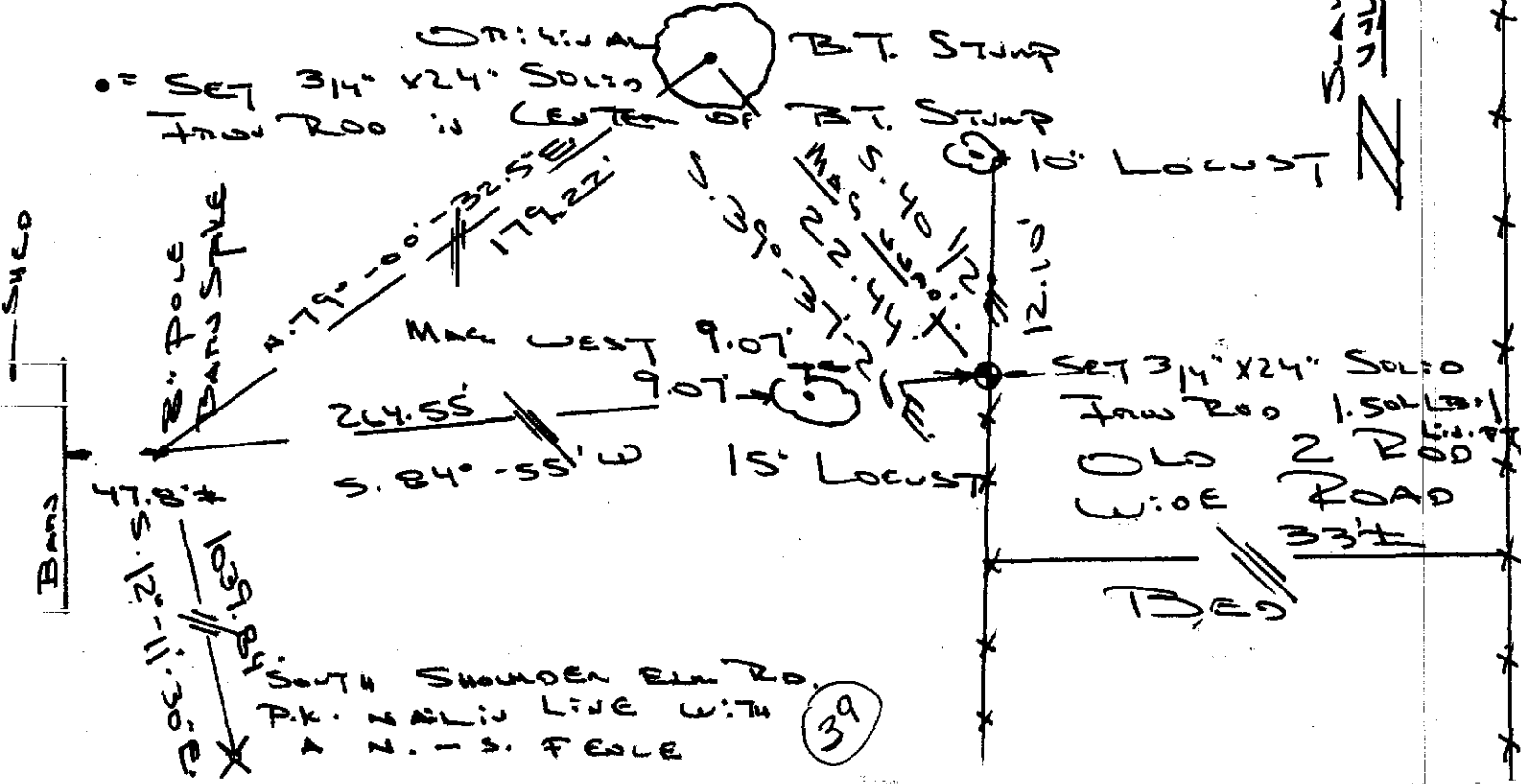
CONTINUES ON BACK

I made a thorough records search at office of Vernon Co. Register of Deeds for both Section 22 and adjoining Section 15. Found no recent surveys on file. Found no retracements in Old 2 volumes.

- (c) In the plan view drawing below, provide reference ties to at least 4 witness monuments, if the location is within a municipality, to at least 2 witness monuments. (Witness monuments shall be made of concrete, natural stone, iron or other equally durable material.) Describe witness monuments.

- (d) Show a plan view drawing depicting the relevant monuments and reference ties which is sufficient in detail to enable accurate relocation of the corner monument if the corner monument is disturbed. Indicate north.

3.75' CIRCUMFERENCE



SCALE 1" = 10'
 UNLESS PROVED OTHERWISE

(e) Describe any material discrepancy between the location of the corner as restored or reestablished and the location of that corner as previously restored or reestablished by distance and direction. Show the discrepancy on the plan view drawing under (d), above. Show the distances between the corner as previously restored or reestablished and (1) the corner as restored or reestablished, and (2) to at least 2 of the witness monuments shown on the drawing in (d), above.

None!

(f) Was the corner restored through acceptance of (1) an obliterated evidence location, or, (2) a found perpetuated location?

(2) a FOUND PERPETUATED LOCATION FROM ORIGINAL B.T. STUMP

(g&h) Was the corner reestablished through lost corner proportionate methods? If so, show the method, including the directions and distances to other public land survey corners used as evidence or used for proportioning in determining the corner location?

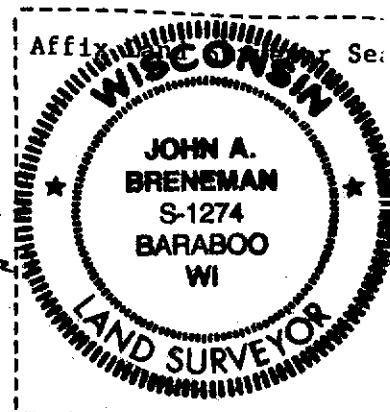
No!

(b) CONTINUED

FROM RESEARCH RECORDS OF ORIGINAL RUNNING NOTES B.L.M. SUBDIVISION OF HILLSTOWN TWP. EAST RANGE BET. SECTIONS 15 & 22 R. 1 E. 4TH PRINCIPAL MERIDIAN AT 39.60 CH. SET. 1/4 SEC. POST BEARINGS (RED OAK 16" N. 40 1/2 W. 34 LINKS WHITE OAK 20" S. 30 E. 90 LINKS. FROM AN E.D.M. 96" SLEWS THE OPPOSITE TRAVERSE OF NORTH LINE OF SECTION 22 FOUND ORIGINAL RED OAK 16" B.T.

NOW ALL THAT REMAINS IS A HOLLOW STUMP 3.75' FEET IN CIRCUMFERENCE. I BARKED OFF THIS B.T. STUMP AND FIT OLD NORTH-SOUTH FENCE LINE OF WEST LINE OF OLD ABANDONED TOWN ROAD. ALSO FIT IN LINE WITH OLD FENCE ON WEST SIDE OF OLD ROAD WEST OF 1/4 CORNER.

(1) I, John A. Breneman (type or print name) certify that the corner location shown on this record was determined by me or under my direction and control and that this U.S. Public Land Survey Monument Record is correct and complete to the best of my knowledge and belief.



John A. Breneman
Signature

Dec 26, 1989
Date