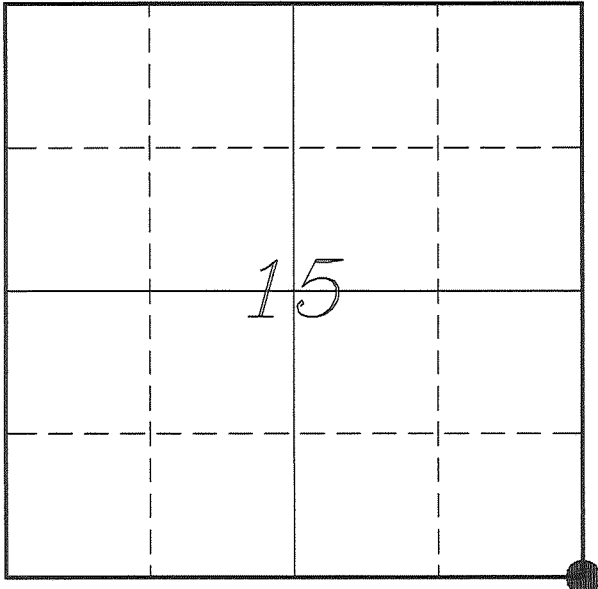


U. S. PUBLIC LAND SURVEY MONUMENT RECORD

**SECTION 15, T14N, R1E, TOWN OF HILLSBORO
VERNON COUNTY, WISCONSIN**



LOCATION OF LANDMARK

VERNON COUNTY COORDINATE SYSTEM	
Northing	195882.385
Easting	843960.399
Datum	NAD 1983 (2011)
Elevation	
Datum	
TYPE OF LANDMARK: Set Lunde Monument 4" Brass Capped Iron Pipe	
BEARINGS ARE REFERENCED TO: Vernon County Coordinates (Survey Grade)	

Witnesses: Larry Handschy
Al Hoff

Eagle Ridge Surveying
PO Box 213
Wilton, Wisconsin

Date: 13 July 2017

Describe any record evidence, monument evidence, testimonial evidence or any other material evidence you considered and whether the monument was found or restored through acceptance of an obliterated evidence location.

No bearing trees of record were located.

The quarter corners to the North and South were independently re-established without using this corner. Measurements would put this corner 2530.6 feet from the E 1/4 Corner of 15 and 2714.3 feet from the E 1/4 Corner of Section 22.

Hefner's has a note on his survey of 2004, that states that occupation in Section 23 does not fit this corner, but still used it. In my opinion, he was having an issue with the corner in relation to occupation.

Cornell's survey of 1998, shows that he found Breneman's 3/4" iron rod. On his survey also shows a monument near the '40' corner between this corner and the E 1/4 corner of Section 22. The distances shown are 1260.92 feet to the E 1/4 Corner of Section 22 and 1419.02 feet to this corner. Which also indicates that Breneman's corner may be too far North.

I measured occupation in all 4 sections, (14, 15, 22 & 23) and found that interior and exterior occupation at '40' corners and along section lines all disagree with the location of this corner.

I found that the difference would put this corner 67 feet further South.

Breneman's tie sheet states he found a fence corner. There is a fence going North and the only thing going to the West is a field fence that is of short distance. Ownership around this corner only supports a North/South fence.

I decided that it was best to re-establish this corner at the more appropriate location. I held the North/South fence and extended the fence along the North side of Section 23 East of Elm Road. This location fits well with other occupation.

I accepted this location as the best available evidence of the original government corner and placed a Lunde Monment.

Describe or show any material discrepancy between the location of the restored corner and that of the corner previously restored or re-established.

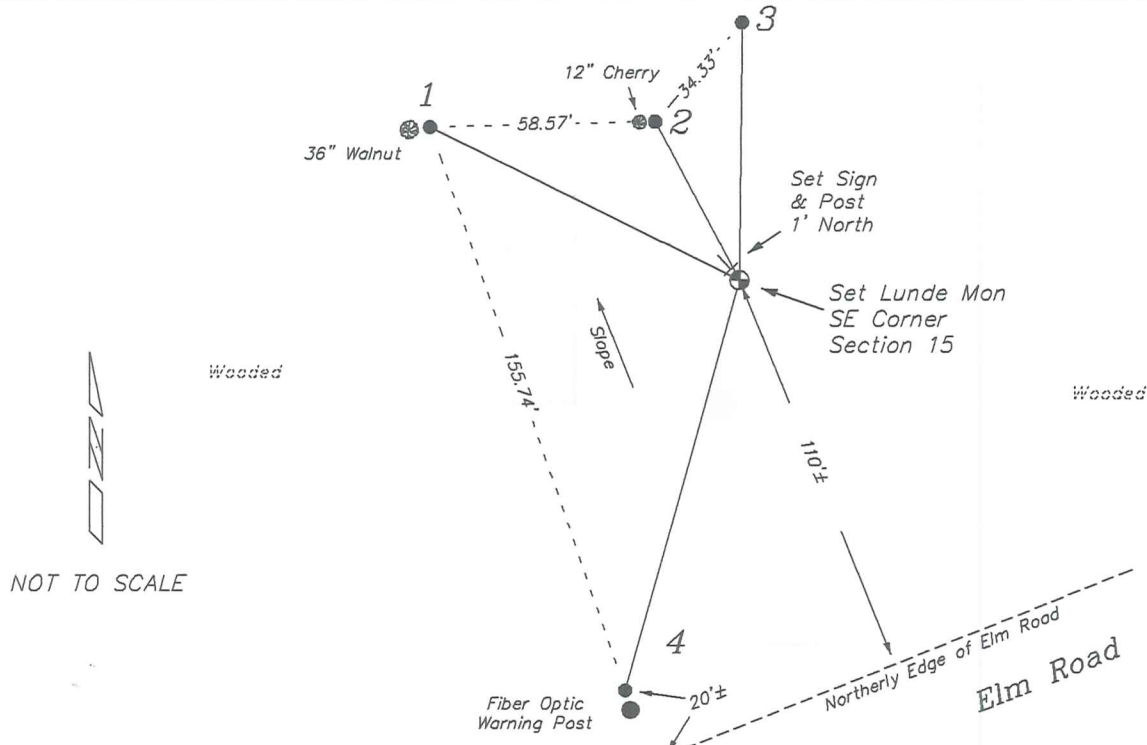
John E Davidson established this corner in December 1852.

John Breneman was at this corner, in December 1989, during a survey in Section 22. He shows that he set a 3/4" iron bar at a fence corner.

Terry Cornell was at this corner, in May 1998 during a survey in Section 23. He shows he found a 3/4" iron rod.

RECORD OF DURABLE WITNESS MONUMENTS

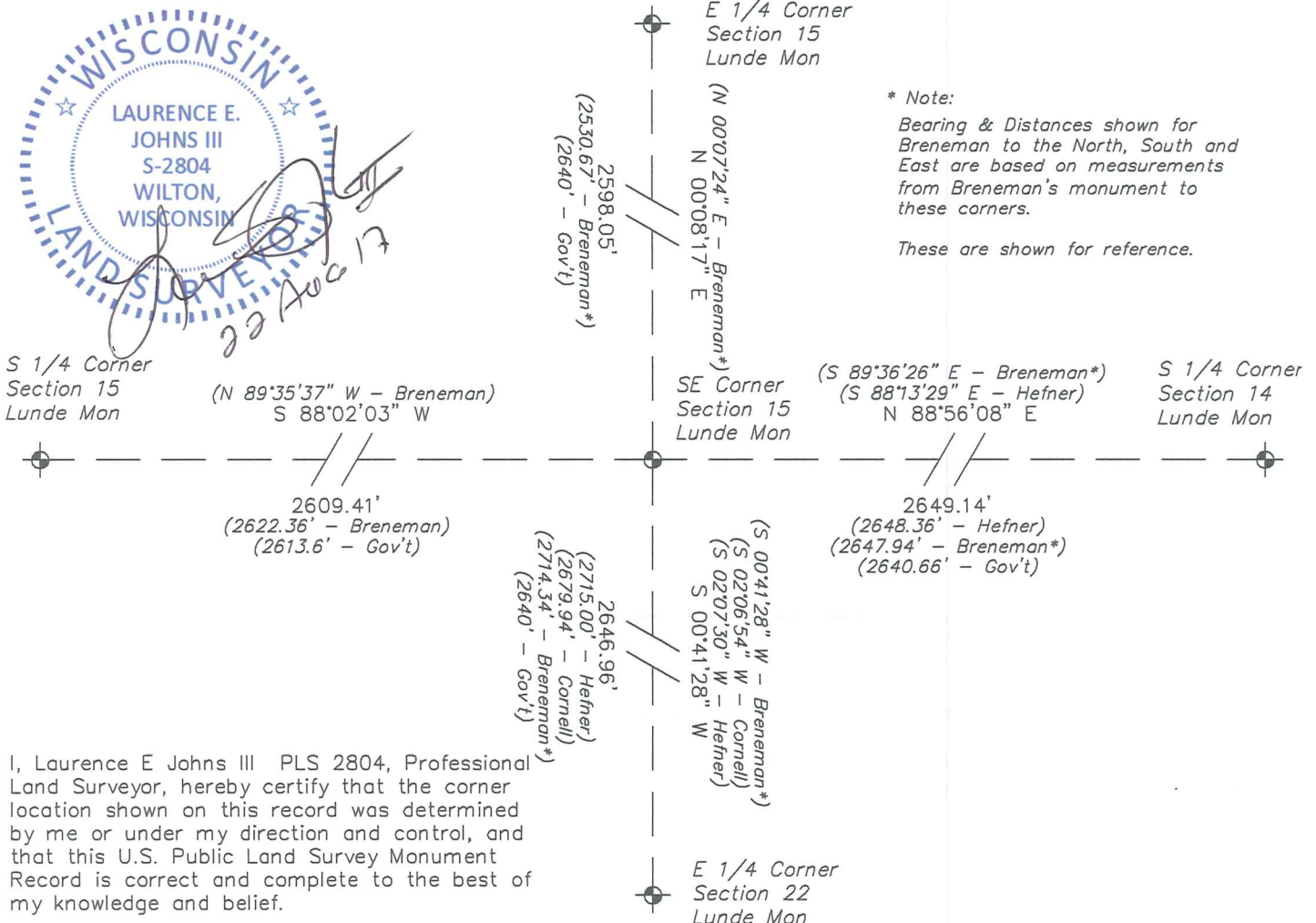
NO	DESCRIPTION	BEARING	DISTANCE
1	Set 3/4" x 18" Iron Rod 1' East of a 36" Walnut	N 63°27'58" W	89.82'
2	Set 3/4" x 18" Iron Rod 1' East of a 12" Cherry	N 27°41'49" W	46.92'
3	Existing 3/4" Iron Rod Corner from Breneman Tie Sheet	N 00°41'28" E	67.38'
4	Set 3/4" x 18" Iron Rod 2' North of Fiber Optic Warning Post	S 15°31'10" W	111.22'



NOT TO SCALE

PLAN VIEW DRAWING OF REFERENCE TIES

Map Showing Distance And Direction To Other Public Land Survey
Corners Used For Re-Establishing The Corner



I, Laurence E Johns III PLS 2804, Professional Land Surveyor, hereby certify that the corner location shown on this record was determined by me or under my direction and control, and that this U.S. Public Land Survey Monument Record is correct and complete to the best of my knowledge and belief.

JAN 16 1941

U. S. PUBLIC LAND SURVEY MONUMENT RECORD

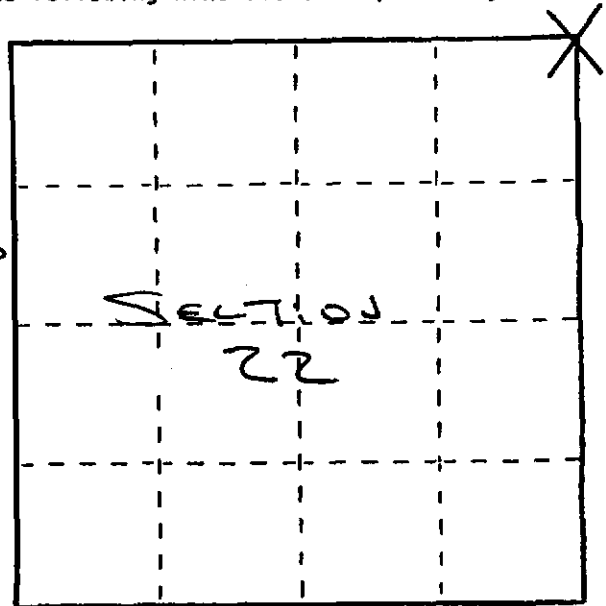
INSTRUCTIONS:

This record shall show the location of the corner and shall include all of the following nine elements (a through i).

(a) Identify the corner by reference to the U.S. public land survey system.

O = Corner monument restored.

NORTHEAST CORNER OF SECTION
22, T. 14N, R. 1E, TOWNSHIP
OF HILLSTON, VERMONT,
COUNTY, WIS.



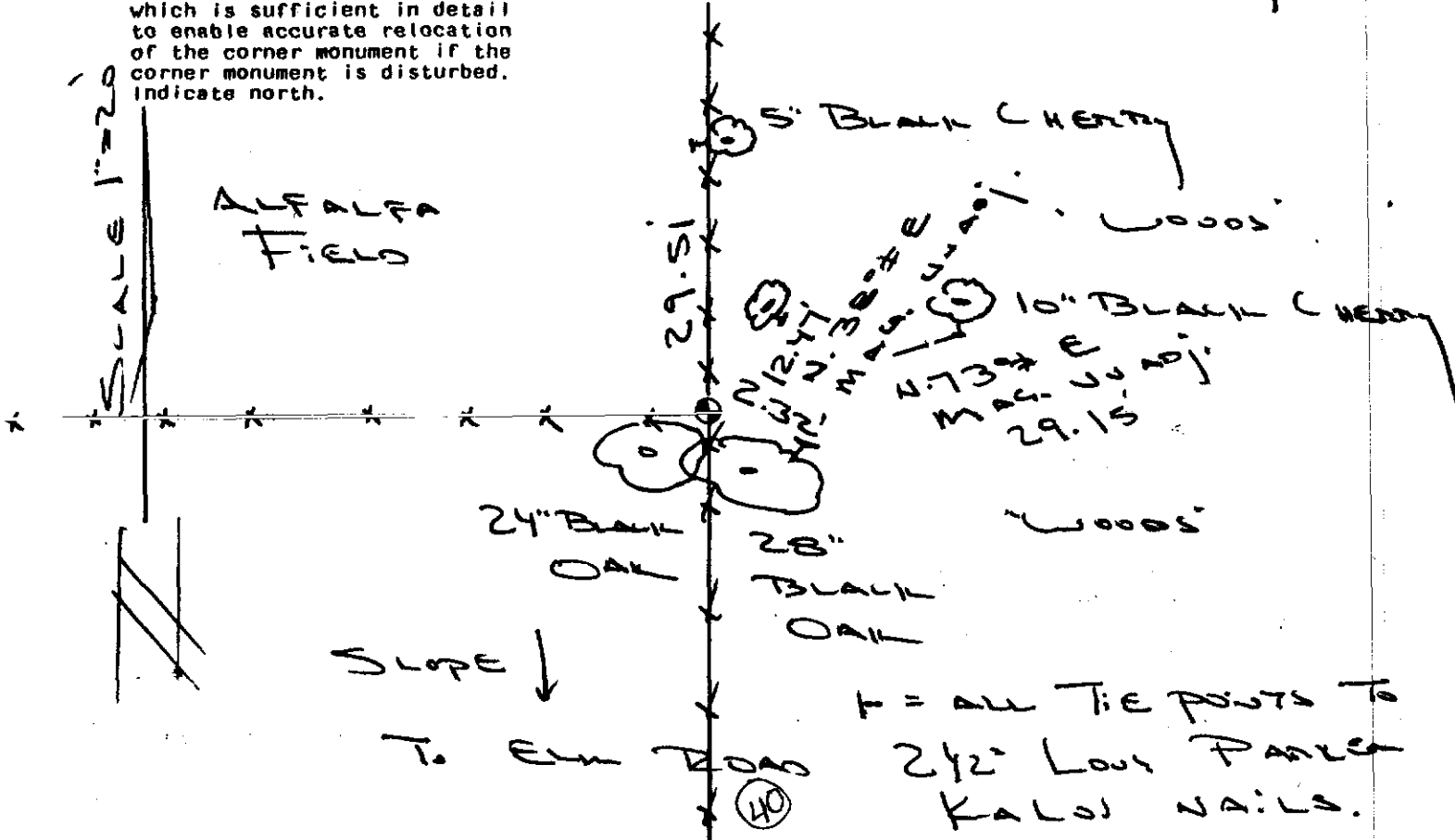
(b) Describe any record evidence, monument evidence, occupational evidence, testimonial evidence or any other material evidence you considered, and whether the monument was found or placed.

I MADE A THOROUGH RECORDS SEARCH AT
OFFICE OF VERMONT COUNTY REGISTER OF DEEDS.
FOR SECTIONS 14 - 15 - 22 AND 23 FOUND NO
RETRACEMENT SURVEYS OR RECORD SINCE
ORIGINAL T.B.L.M. SUBDIVISION OF HILLSTON
TOWNSHIP. SEARCHED FOR ORIGINAL BUT
DUE TO BLINDNESS NOT FOUND. ACCEPTED IN

(c) In the plan view drawing below, provide reference ties to at least 4 witness monuments, or, if the location is within a municipality, to at least 2 witness monuments. (Witness monuments shall be made of concrete, natural stone, iron or other equally durable material.) Describe witness monuments.

OCCUPIED FENCE CORNER LOCATION
AS CORNER AND SET A 3 1/4" X 2 1/4"
SOLID IRON ROD 1.502 IN DIAMETER 40 FT.

(d) Show a plan view drawing depicting the relevant monuments and reference ties which is sufficient in detail to enable accurate relocation of the corner monument if the corner monument is disturbed. Indicate north.



(e) Describe any material discrepancy between the location of the corner as restored or reestablished and the location of that corner as previously restored or reestablished by distance and direction. Show the discrepancy on the plan view drawing under (d), above. Show the distances between the corner as previously restored or reestablished and (1) the corner as restored or reestablished, and (2) to at least 2 of the witness monuments shown on the drawing in (d), above.

Does NOT Apply!

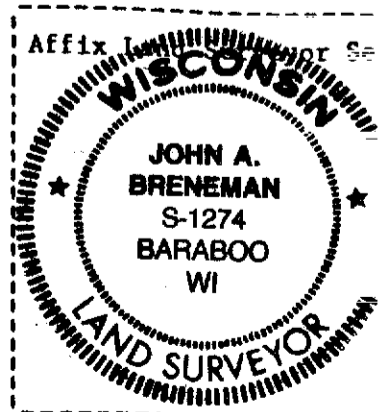
(f) Was the corner restored through acceptance of (1) an obliterated evidence location, or, (2) a found perpetuated location?

(2) A FOUND PERPETUATED OBLITERATED CORNER LOCATION!

(g&h) Was the corner reestablished through lost corner proportionate methods? If so, show the method, including the directions and distances to other public land survey corners used as evidence or used for proportioning in determining the corner location?

No!

(i) I, John A. Breneman
(type or print name) certify that the corner location shown on this record was determined by me or under my direction and control and that this U.S. Public Land Survey Monument Record is correct and complete to the best of my knowledge and belief.

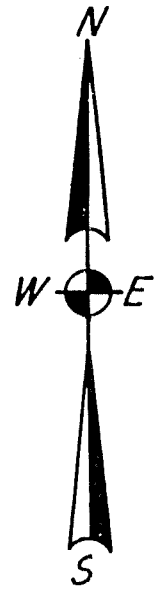
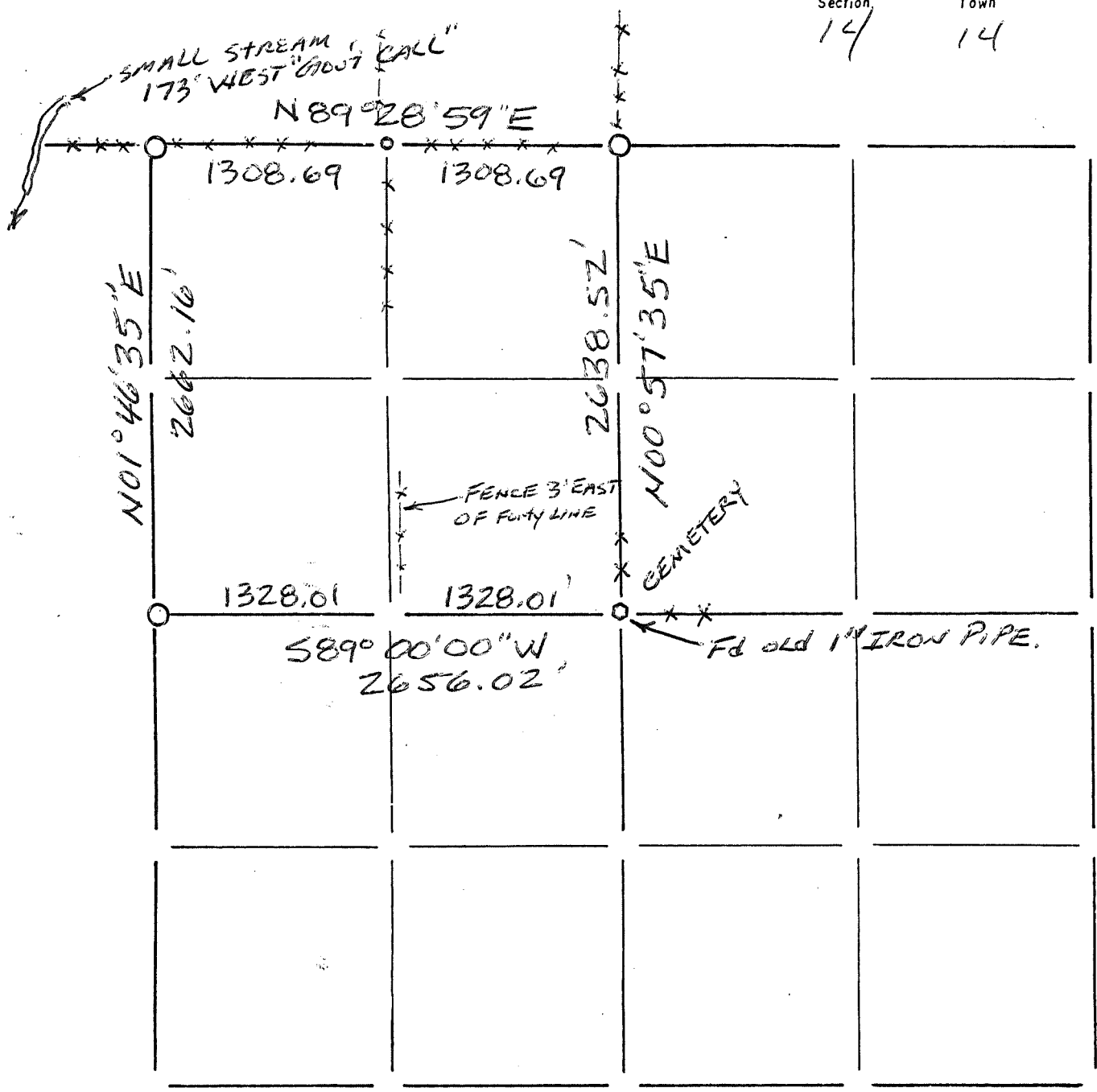


John A. Breneman
Signature

12/26/1989
Date

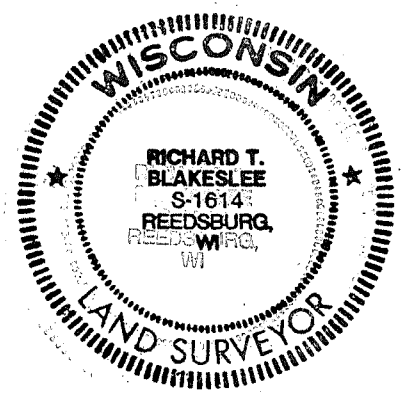
Section Summary and Index

Section 14 - 14 - 1E
 14 14 1E



LEGEND

- ⊕ - Harrison cast iron monument.
- - Stone or concrete monument.
- - Other 1/4" RE-BAR SET
- set 3/4" RE-BAR
- 1" IRON PIPE Fd.



Richard T. Blakeslee
 3-21-03

70