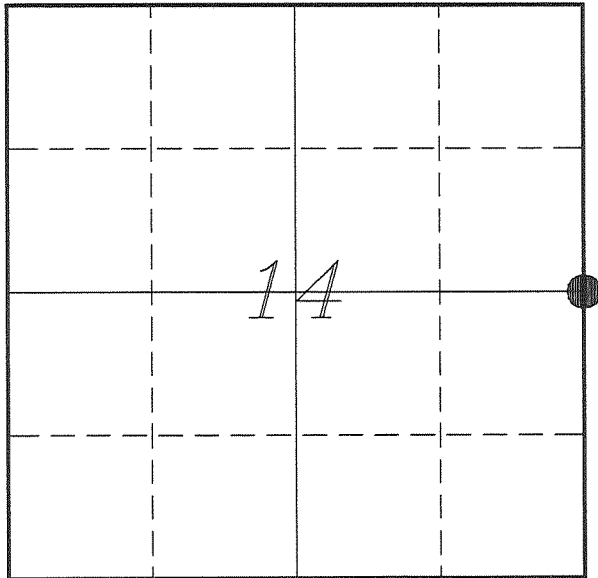

U. S. PUBLIC LAND SURVEY MONUMENT RECORD

SECTION 01, T14N, R1E, TOWN OF HILLSBORO VERNON COUNTY, WISCONSIN



LOCATION OF LANDMARK

Witnesses: Laurence E Johns III
Larry Handschy

Date: 2 October 2017

VERNON COUNTY COORDINATE SYSTEM	
Northing	198667.766
Easting	849308.072
Datum	NAD 1983 (2011)
Elevation	
Datum	
TYPE OF LANDMARK:	
Set 1 1/4" x 18" Iron Rod	
BEARINGS ARE REFERENCED TO:	
Vernon County Coordinates (Survey Grade)	

Eagle Ridge Surveying
PO Box 213
Wilton, Wisconsin

Describe any record evidence, monument evidence, testimonial evidence or any other material evidence you considered and whether the monument was found or restored through acceptance of an obliterated evidence location.

No bearing trees of record were located.

Sandsnes describes on his tie sheet that he found a 60d spike on the line between the NW and SW Corners of Section 13 and that it matches a government call to a creek and fence line occupation to the East.

Field inspection of this corner finds that this corner was set at the mid-point between corners. The only fence occupation to the East is a short pasture fence that is North of his location. The nearest fence to the East is at the center of section and that is well North of this location.

I find no record of the 60d spike that he found, unless it is one used by Carroll in an earlier survey in the East side of the Section 13, but that survey shows the center of section mentioned before. It does not match this corner. It may have been a temporary point used by a previous surveyor.

After measuring fence occupation throughout Sections 13 & 14, I have found the following evidence. Section 14 has occupation at every '40' corner along the quarter line, which all line up to a point north of Sandsnes' corner. The '40' occupation to the North and South also agree with that same point. Occupation at the Center of Section 13 points to a point a bit further North, as well.

As far as the government call to the creek. It appears to me that the creek crossing was changed to accommodate a culvert under Farro Road. Therefor its location was suspect for being in the same location as the government survey.

I decided that the location set by Sandsnes at the mid-point was incorrect in that there is much occupational evidence in both sections that seems to point to a different location.

I determined this location by extending the line from the W 1/4 Corner of Section 14 through the long standing monument at the Center of Section 14 and intersecting the line from the NE corner of Section 14 and the '40' occupation. This location does create equal '40' distances to the North and South that match occupation.

This location lands in the pavement of the road and I placed an 1 1/4" iron rod instead.

Describe or show any material discrepancy between the location of the restored corner and that of the corner previously restored or re-established.

John E Davidson established this corner in December 1852.

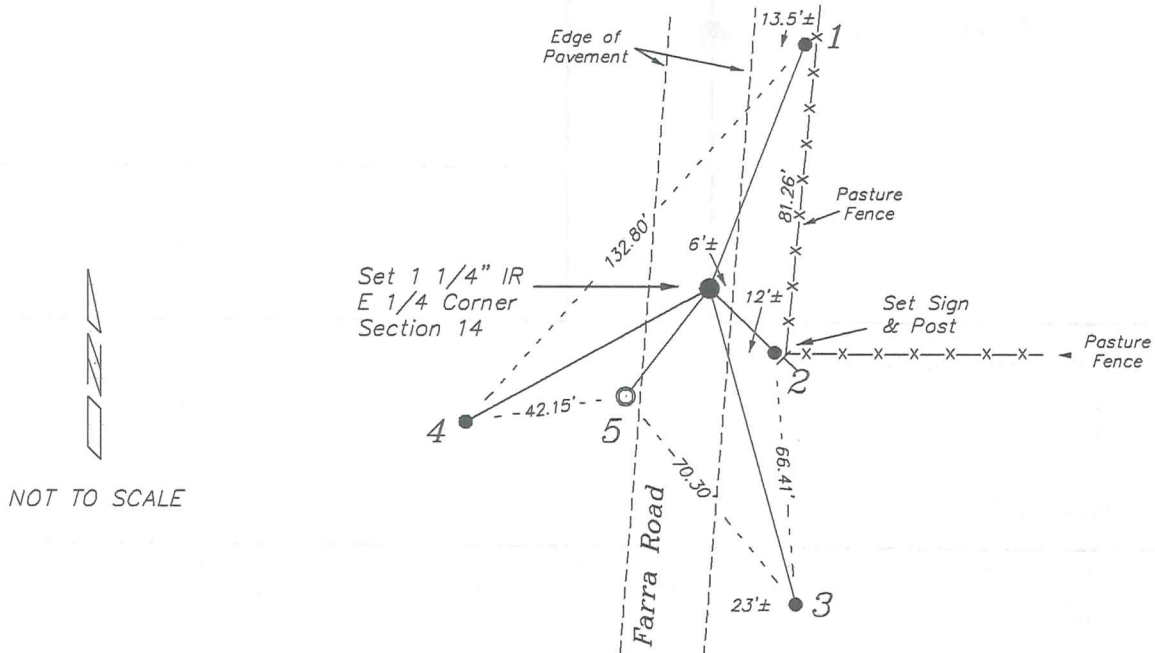
Carl Sandsnes was at this corner, in December 1998, during a remonumentation project. His tie sheet shows he set a Vernon County Monument.

John Brey was at this corner, in May 1999, during a survey in Section 13. He shows that he set a 3/4" iron rod.

Patrick Carroll was at this corner, in May 2005, during a survey in Section 13. He shows he found a Vernon County Monument.

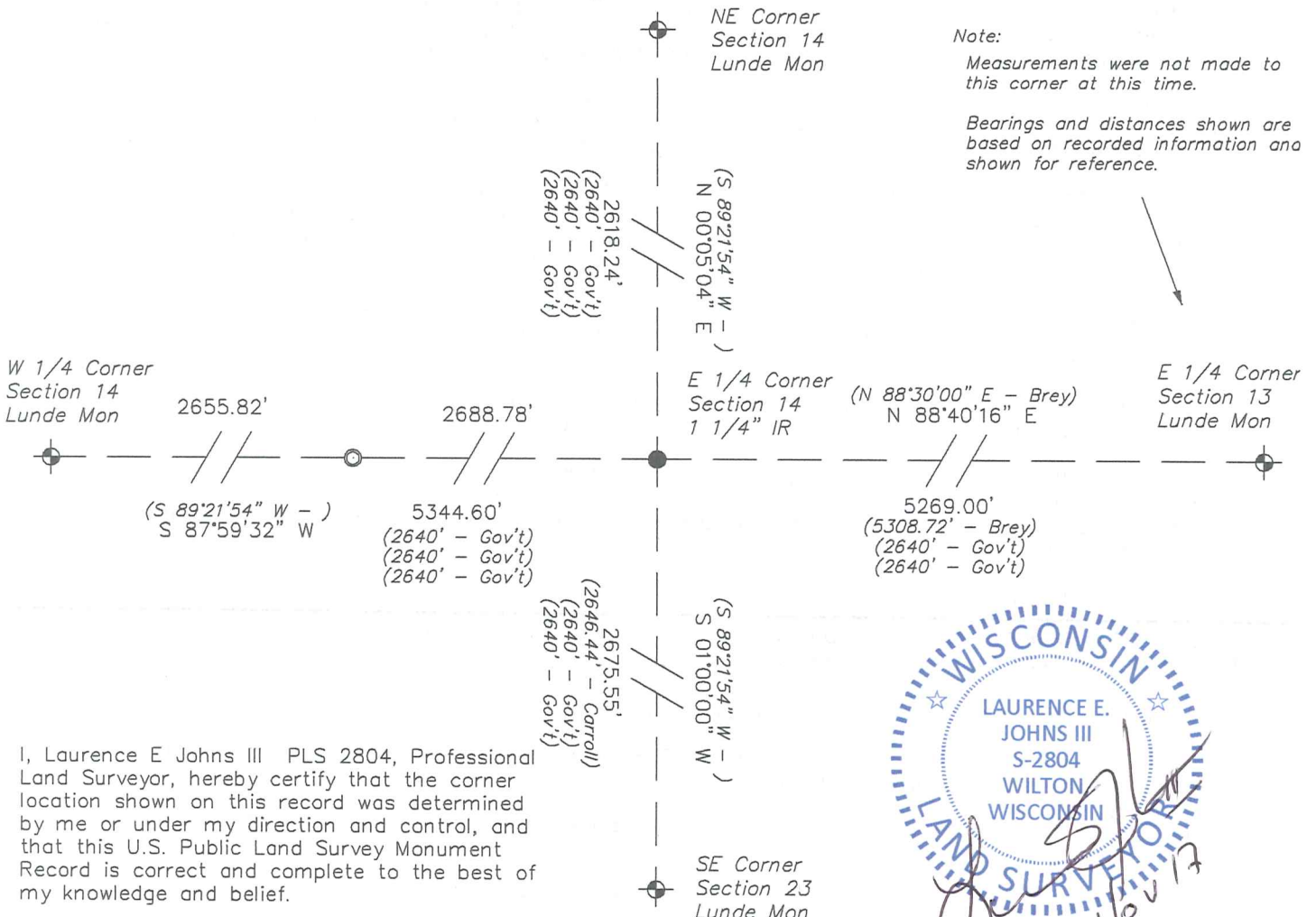
RECORD OF DURABLE WITNESS MONUMENTS

NO	DESCRIPTION	BEARING	DISTANCE
1	Set 3/4" x 18" Iron Rod In Right-of-Way Fence	N 21°13'32" E	68.62'
2	Set 3/4" x 18" Iron Rod West Side of Fence Post	S 44°57'19" E	23.88'
3	Set 3/4" x 18" Iron Rod 2' West of a 22" Box Elder	S 15°04'15" E	86.04'
4	Set 3/4" x 18" Iron Rod 1' North of Power Pole #87	S 61°01'26" W	72.60'
5	Existing Lunde Mon with Cap Removed Sandsnes Corner	S 37°33'25" W	71.85'



PLAN VIEW DRAWING OF REFERENCE TIES

Map Showing Distance And Direction To Other Public Land Survey
Corners Used For Re-Establishing The Corner



I, Laurence E Johns III PLS 2804, Professional Land Surveyor, hereby certify that the corner location shown on this record was determined by me or under my direction and control, and that this U.S. Public Land Survey Monument Record is correct and complete to the best of my knowledge and belief.

LAURENCE E. JOHNS III
 S-2804
 WILTON
 WISCONSIN
 LAND SURVEYOR
 7 Nov 17

FOR VERNON COUNTY, WISCONSIN

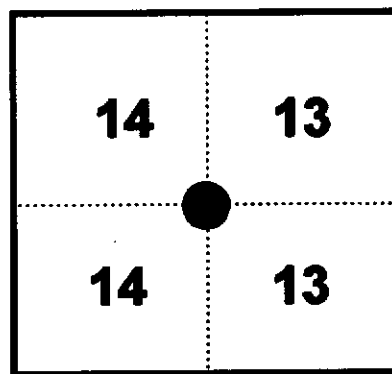
Note: This form is intended and designed to fulfill all requirements of Wisconsin Administrative Code, Chapter AE-7.08, U.S. Public Land Survey Monument Record (3)(a)(b)(c)(d)(e)(f)(g)(h)(i). Use additional sheets if necessary.

(a) The One Quarter corner common to Sections 13,14

Township(s) 14 North, Range(s) 1 East.

Vernon County Coordinates: N 198,639.315

Datum: _____ E 849,286.655

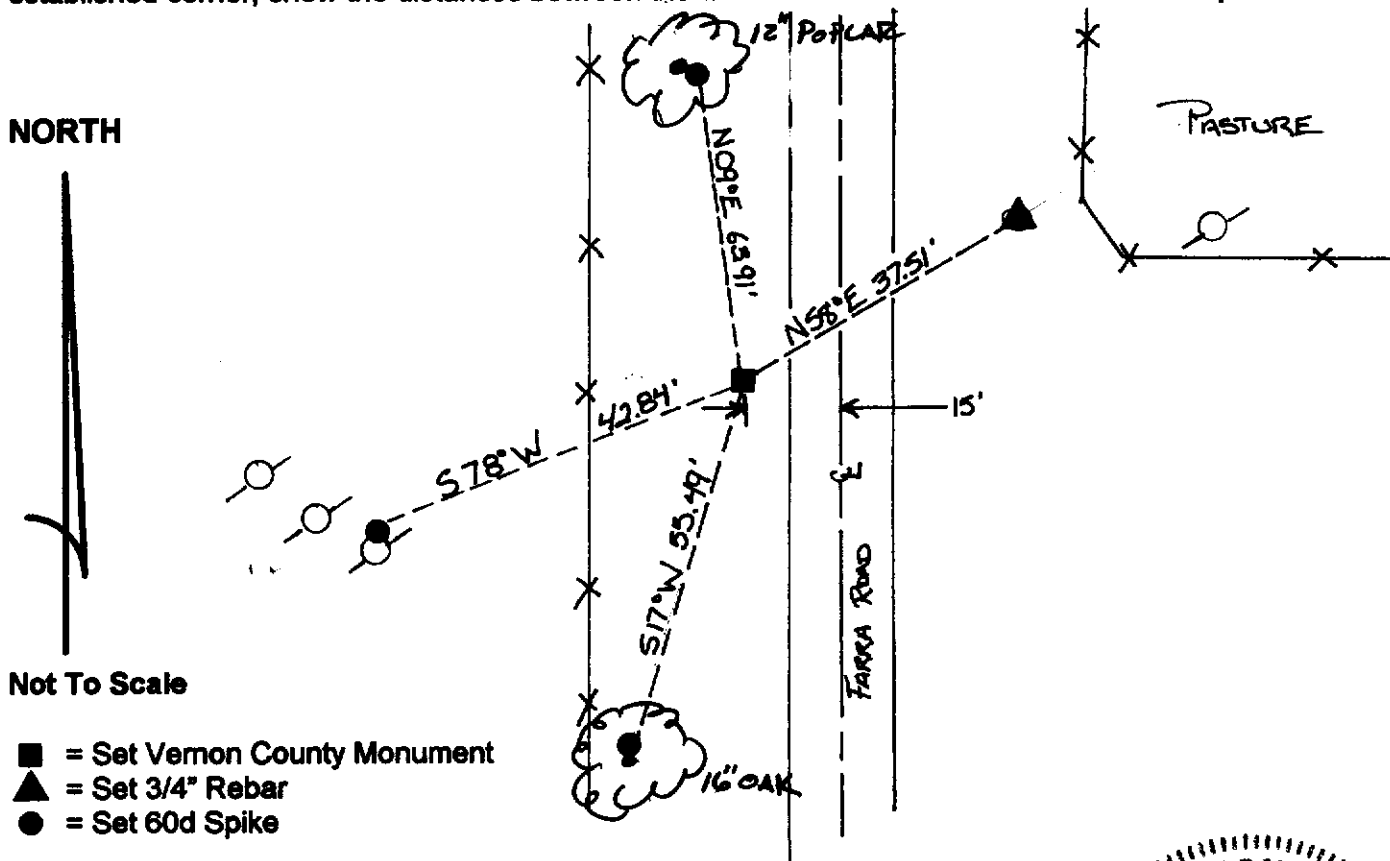


(b)(f)(h) Description of monument found at this corner and if it was accepted, state all evidence (material, testimonial, occupational, plats records, other monuments) used as a basis for accepting. If not accepted or nothing was found, state evidence used as basis for establishing location and what was set. If re-established through lost corner proportionate methods, indicate all monuments, distances and directions used.

1845 - ~~J. E. Davidson~~ established corner location 40 chains North of the Southwest of Section 13. Overall mile equals 80 chains.

11-5-98 - Found 60d spike on line between Northwest and Southwest corners of Sec. 13 and set a Vernon County Monument. Corner location matches fence line occupation to the east and Government notes for creek crossing 2 chains south of corner and set witness monuments as shown.

(c)(d)(e) Plan view of corner with ties to at least four (4) witness monuments. If in disagreement with previously established corner, show the distances between the two corners and also indicate ties to disputed corner.



Not To Scale

- = Set Vernon County Monument
- ▲ = Set 3/4" Rebar
- = Set 60d Spike

(I) Certify that the corner location on this record was determined by me or under my direction and control and that this U.S. Public Land survey Monument Record is correct and complete to the best of my knowledge and belief.



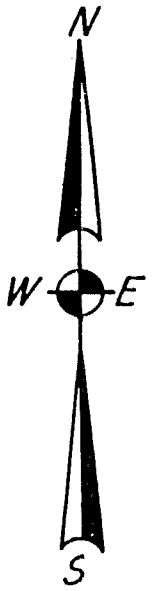
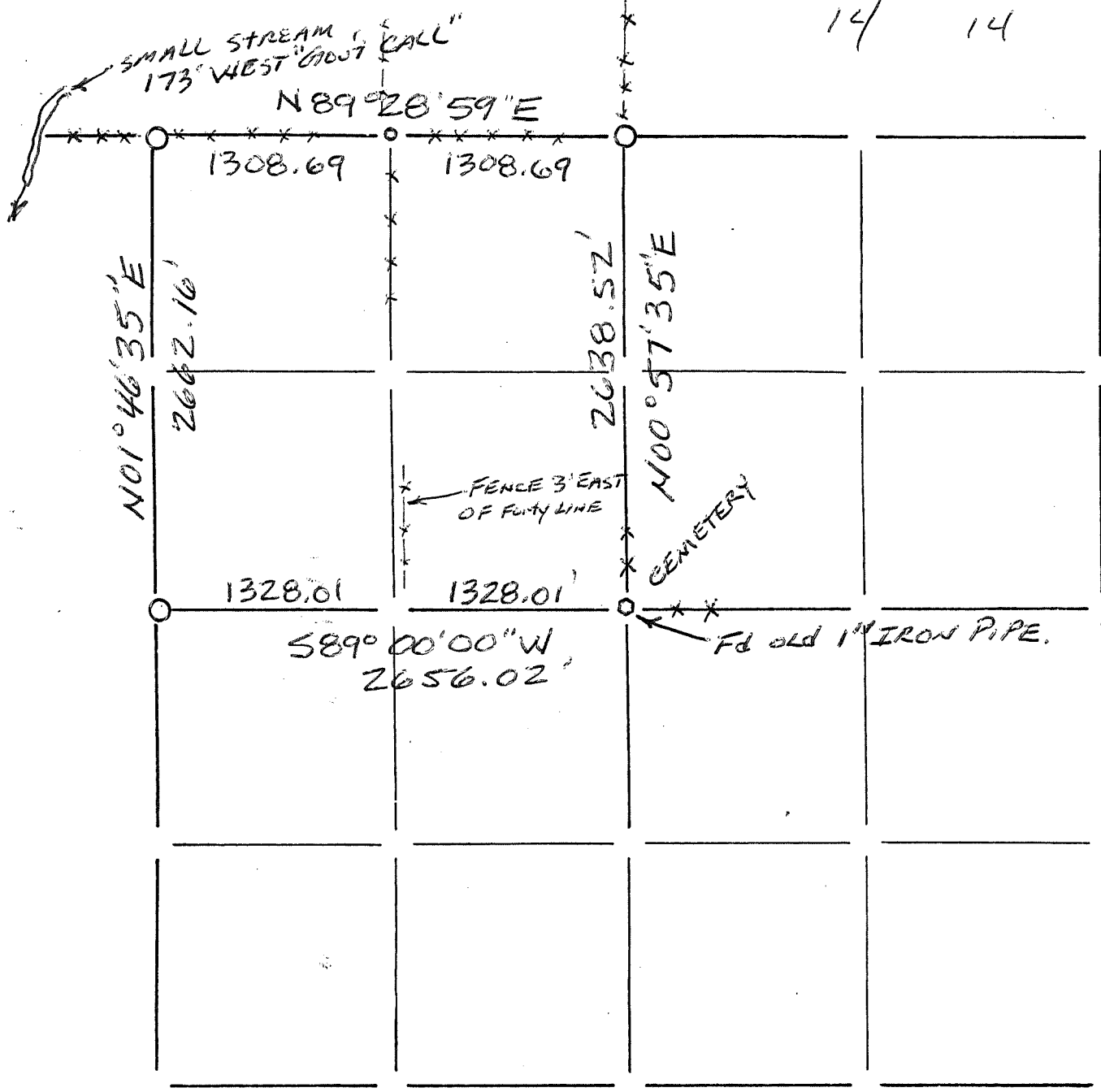
[Signature] _____ 12/22/98
 Signature Date

Filed for record in Vernon County Surveyor's Office on _____ INDEX NO. _____

22

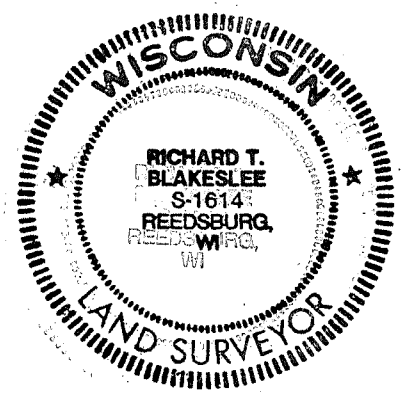
Section Summary and Index

Section 14 - 14 - 1E
 14 14 1E



LEGEND

- ⊕ - Harrison cast iron monument.
- - Stone or concrete monument.
- - Other 1/4" RE-BAR SET
- set 3/4" RE-BAR
- 1" IRON PIPE Fd.



Richard T. Blakeslee
 3-21-03

70