

VERNON COUNTY CERTIFIED U.S. PUBLIC LAND SURVEY MONUMENT RECORD

INSTRUCTIONS: THIS RECORD SHALL SHOW THE LOCATION OF THE CORNER AND SHALL INCLUDE ALL OF THE FOLLOWING ELEMENTS (A-I)

(A) IDENTIFY THE CORNER BY REFERENCE TO THE U.S. PUBLIC LAND SURVEY SYSTEM

■ = CORNER MONUMENT RESTORED

WITNESSES TO CORNER LOCATION:

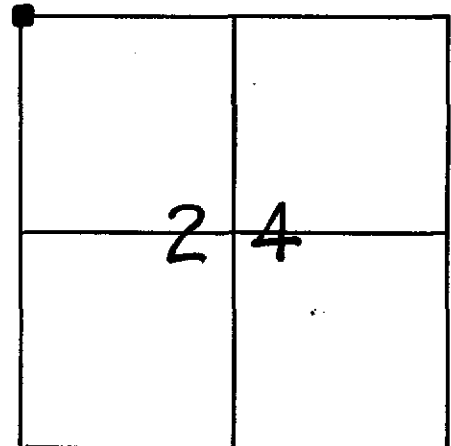
- 1) MARK C. CARLSON
- 2)
- 3)

STATE PLANE COORDINATES (WISCONSIN SOUTH ZONE)

NORTHING:
EASTING:

VERNON COUNTY COORDINATES

NORTHING: N 195992.623
EASTING: E 819261.974



SECTION 24, TOWN 14 NORTH, RANGE 7 EAST

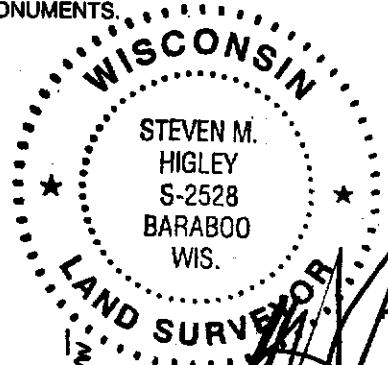
(24-14-1E)

(B) DESCRIBE ANY RECORD EVIDENCE, MONUMENT EVIDENCE, OCCUPATIONAL EVIDENCE, TESTIMONIAL EVIDENCE OR ANY OTHER MATERIAL EVIDENCE YOU CONSIDERED, AND WHETHER THE MONUMENT WAS FOUND OR PLACED.

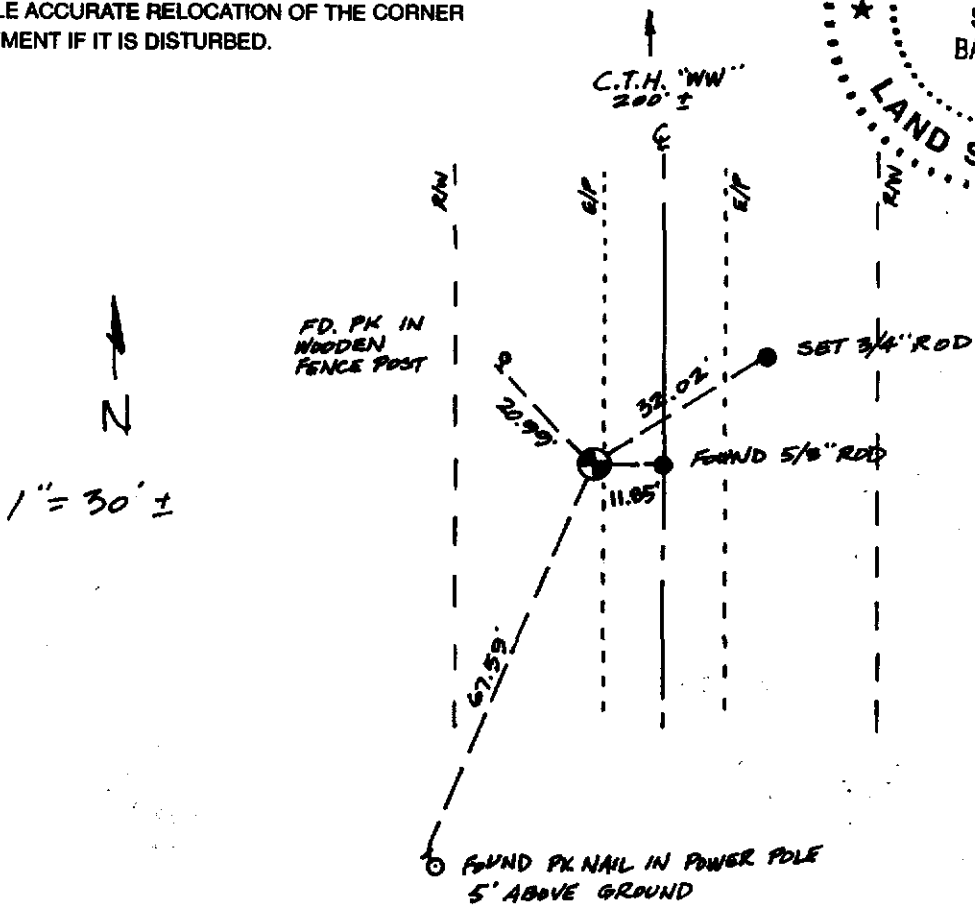
- 1845 - COR. EST. BY J.E. DAVIDSON 80.46 CL FROM RANGE LINES (REMDISTANT).
- 1977 - J.L. BRYE CALLS FOR 3/4" ROD FOUND (V. 1 CSM, P. 54)
- 1991 - J.J. CARROLL CALLS FOR 5/8" ROD FOUND (V. 2 CSM, P. 61)
- 1997 - P.C. CROOK REESTABLISHED BASED ON N 1/4 COR., SEC. 23 & N 1/4 COR. OF NW 1/4, SEC. 24 (SET LUNDE)
- 1998 - C.M. SANDNES FOUND MON. & TIES AS PART OF REMONUMENTATION PROJECT
- 2001 - FOUND & MADE NEW TIE.

(C) IN THE PLAN VIEW DRAWING BELOW, PROVIDE REFERENCE TIES TO AT LEAST 4 WITNESS MONUMENTS OR, IF THE LOCATION IS WITHIN A MUNICIPALITY, TO AT LEAST 2 WITNESS MONUMENTS. (WITNESS MONUMENTS SHALL BE MADE OF CONCRETE, NATURAL STONE, IRON, OR OTHER EQUALLY DURABLE MATERIAL.) DESCRIBE WITNESS MONUMENTS.

(D) SHOW A PLAN VIEW DRAWING, DEPICTING THE RELEVANT MONUMENTS AND REFERENCE TIES, WHICH IS SUFFICIENTLY DETAILED TO ENABLE ACCURATE RELOCATION OF THE CORNER MONUMENT IF IT IS DISTURBED.



27 NOV 2001



(E) DESCRIBE ANY MATERIAL DISCREPANCY BETWEEN THE LOCATION OF THE CORNER AS RESTORED OR REESTABLISHED AND THE LOCATION OF THAT CORNER AS PREVIOUSLY RESTORED OR REESTABLISHED BY DISTANCE AND DIRECTION. SHOW THE DISCREPANCY ON THE PLAN VIEW DRAWING UNDER (D), ABOVE. SHOW THE DISTANCES BETWEEN THE CORNER AS PREVIOUSLY RESTORED OR REESTABLISHED AND (1) THE CORNER AS RESTORED OR REESTABLISHED, AND (2) TO AT LEAST 2 OF THE WITNESS MONUMENTS AS SHOWN ON THE DRAWING IN (D), ABOVE.

N/A

(F) WAS THE CORNER RESTORED THROUGH ACCEPTANCE OF (1) AN OBLITERATED EVIDENCE LOCATION, OR (2) A FOUND PERPETUATED LOCATION?

N/A

(G & H) WAS THE CORNER REESTABLISHED THROUGH LOST CORNER PROPORTIONATE METHODS? IF SO, SHOW THE METHOD, INCLUDING THE DIRECTION AND DISTANCES TO OTHER PUBLIC LAND SURVEY CORNERS USED AS EVIDENCE OR USED FOR PROPORTIONING IN DETERMINING THE CORNER LOCATION.

N/A

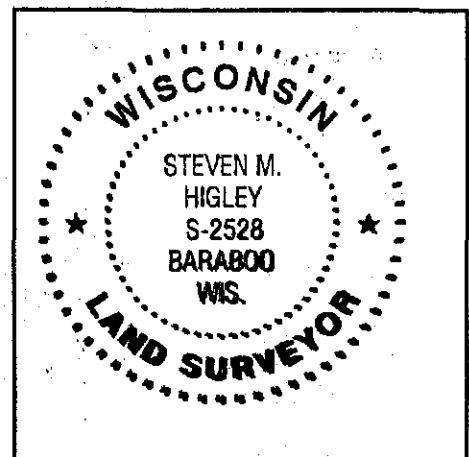
AFFIX LAND SURVEYOR SEAL

(I) I, STEVEN M. HIGLEY CERTIFY THAT THE LOCATION SHOWN ON THIS RECORD WAS DETERMINED BY ME OR UNDER MY DIRECTION AND CONTROL AND THAT THIS U.S. PUBLIC LAND SURVEY MONUMENT RECORD IS CORRECT AND COMPLETE TO THE BEST OF MY KNOWLEDGE AND BELIEF.

SIGNATURE

DATE

27 NOV 01



FOR VERNON COUNTY, WISCONSIN

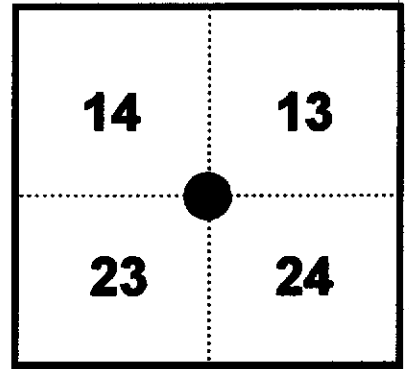
Note: This form is intended and designed to fulfill all requirements of Wisconsin Administrative Code, Chapter AE-7.08, U.S. Public Land Survey Monument Record (3)(a)(b)(c)(d)(e)(f)(g)(h)(i). Use additional sheets if necessary.

(a) The Section corner common to Sections 13,14,23,24

Township(s) 14 North, Range(s) 1 East.

Vernon County Coordinates: N 195992.623

Datum: _____ E 849261.374



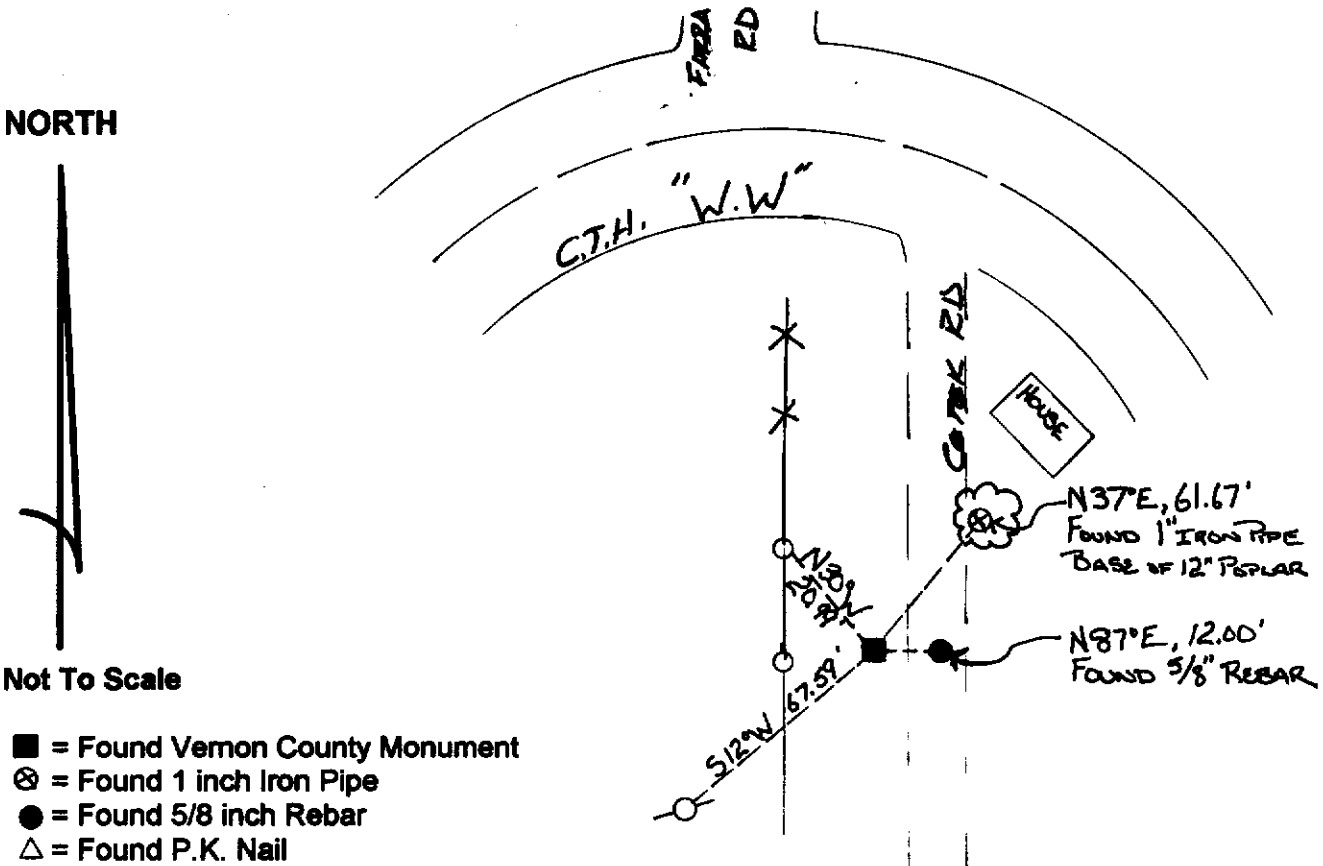
(b)(f)(h) Description of monument found at this corner and if it was accepted, state all evidence (material, testimonial, occupational, plats records, other monuments) used as a basis for accepting. If not accepted or nothing was found, state evidence used as basis for establishing location and what was set. If re-established through lost corner proportionate methods, indicate all monuments, distances and directions used.

1845 - Original corner established by J. E. Davidson 80.46 chains from range lines (Equa-distant).
 - Several surveys by James Carrol and John L. Brey refer to an existing 3/4" iron pipe at the corner.

12-15-1998 - F. Curtis Crook re-established corner location according to occupation from North quarter of Section 23 to the Northeast corner of the Northwest quarter of the Northwest quarter of Section 24 and set Vernon County Monument and set witness monuments as shown.

11-5-1998 - Found Vernon County Monument with witness monuments as per the F. Curtis tie sheet.

(c)(d)(e) Plan view of corner with ties to at least four (4) witness monuments. If in disagreement with previously established corner, show the distances between the two corners and also indicate ties to disputed corner.



Not To Scale

(I) Certify that the corner location on this record was determined by me or under my direction and control and that this U.S. Public Land survey Monument Record is correct and complete to the best of my knowledge and belief.

[Handwritten Signature]

 Signature

12/22/98

 Date



Filed for record in Vernon County Surveyor's Office on _____ INDEX NO. _____

③ See next pg. also

CERTIFIED LAND CORNER

STATE OF WISCONSIN)
 COUNTY OF VERNON) S.S.

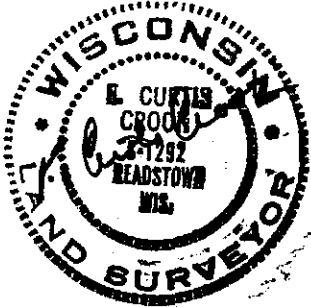
CERTIFICATE

I, F. CURTIS CROOK, do hereby certify that on the 27th day of OCTOBER 1997, I found (evidence) (~~no evidence~~) of the NW corner of SECTION 24, T 14 N, R 1 E, Fourth Principal Meridian, and I re-established said corner according to the Wisconsin Statutes as shown and described hereon.

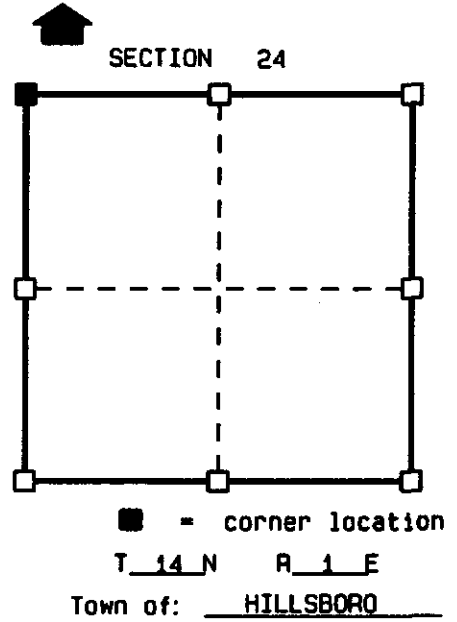
Dated this 15th day of Dec 1997

F. CURTIS CROOK R.L.S. S-1292

Title



Seal



History of original corner establishment:

ORIGINAL CORNER ESTABLISHED BY JAMES M. MARSH IN 1845.
 FOUND SEVERAL SURVEYS BY JAMES J. CARROLL AND JOHN L. BREY WHICH REFER TO AN EXISING 3/4" IRON ROD AT THE CORNER.

Description of corner evidence found:

FOUND IRON BAR AT CENTERLINE OF TOWN ROAD. ITS DIMENSION IS 5/8".
 A TRAVERSE FROM OCCUPATION AT THE N 1/4 OF SECTION 23 TO OCCUPATION AT THE NE CORNER OF THE NW 1/4-NW 1/4 OF SECTION 25 SHOWED THE 5/8" IRON BAR FOUND WAS 12 FEET TOO FAR EAST. RE-ESTABLISHED LOCATION FOR THE SECTION CORNER ACCORDING TO SAID OCCUPATION, SET A VERNON COUNTY MONUMENT AND MADE TIES AS SHOWN BELOW.

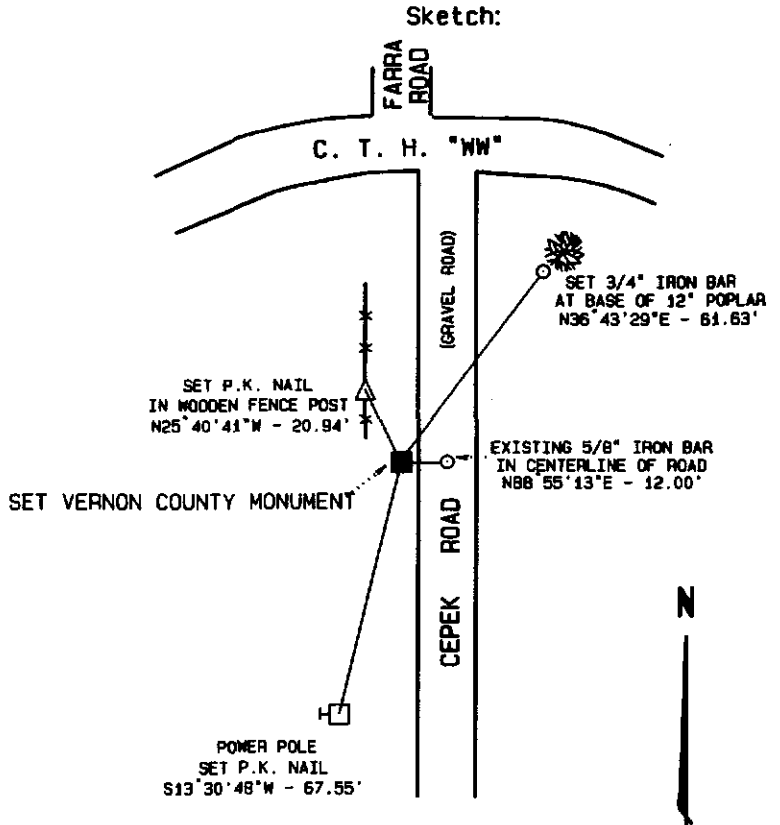
Description of corner and witness monuments, references and accessories used to perpetuate the original or re-established location of this corner:

Witnesses to corner location:

CHAD CROOK
WADE CROOK
MIKE EWING

NOTES:
 DRAWING IS NOT TO SCALE.
 BEARINGS ARE REFERENCED TO PROJECT.
 VERNON COUNTY MONUMENTS ARE LUNDE MONUMENTS.
 SET SURVEY MARKER SIGN NEAR MONUMENT.

(THIS CORNER SET AS PART OF
 VERNON COUNTY'S 1997
 REMONUMENTATION PROJECT.)



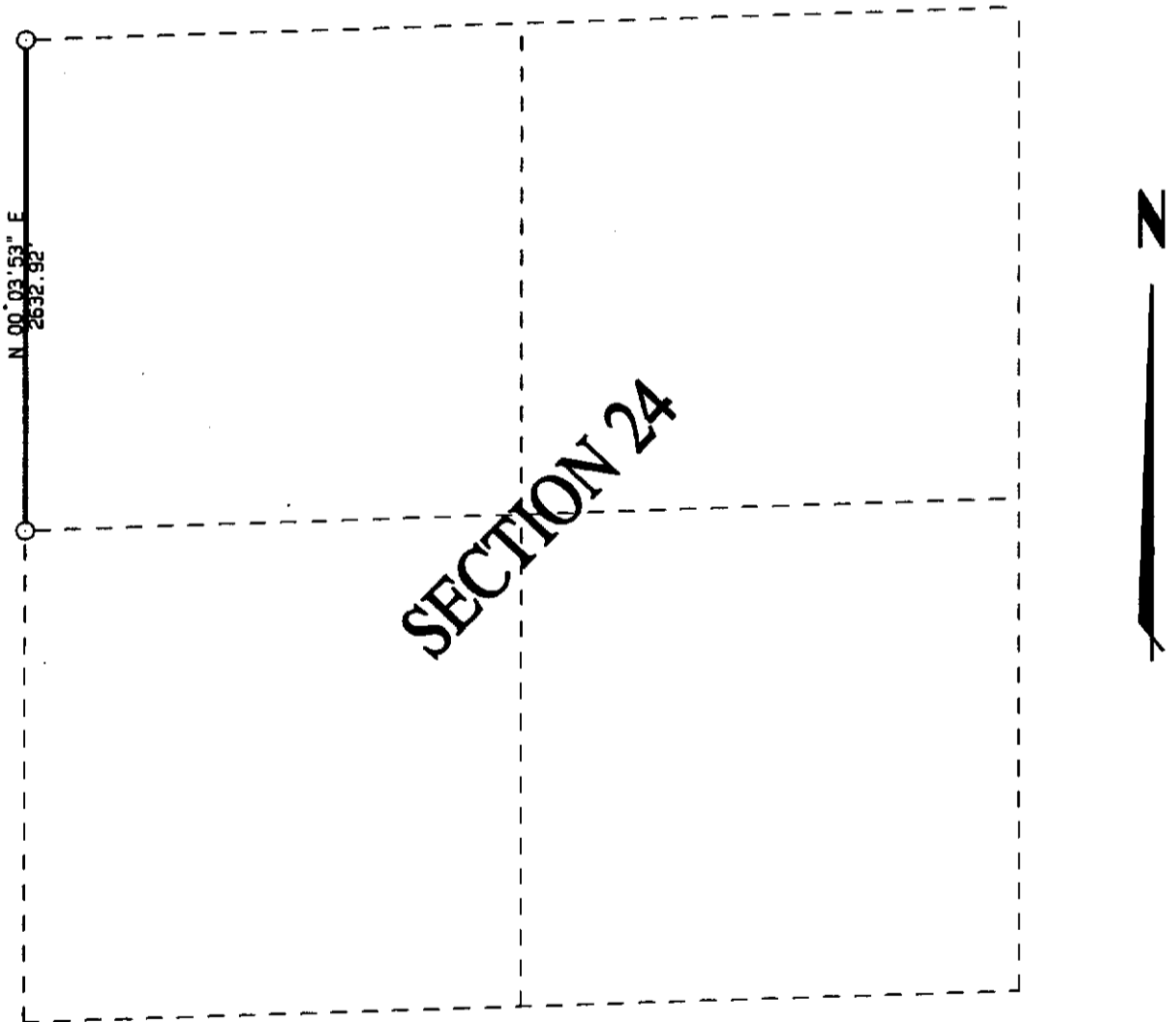
VERNON COUNTY COORDINATES

North (Y)	East (X)
195992.584	849261.356

3A

DATA SHEET

SECTION 24, T14N, R1E
TOWN OF HILLSBORO, VERNON COUNTY

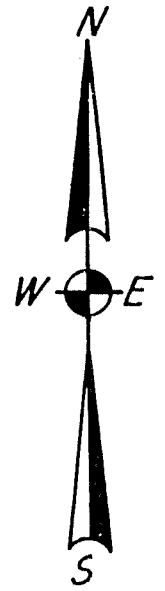
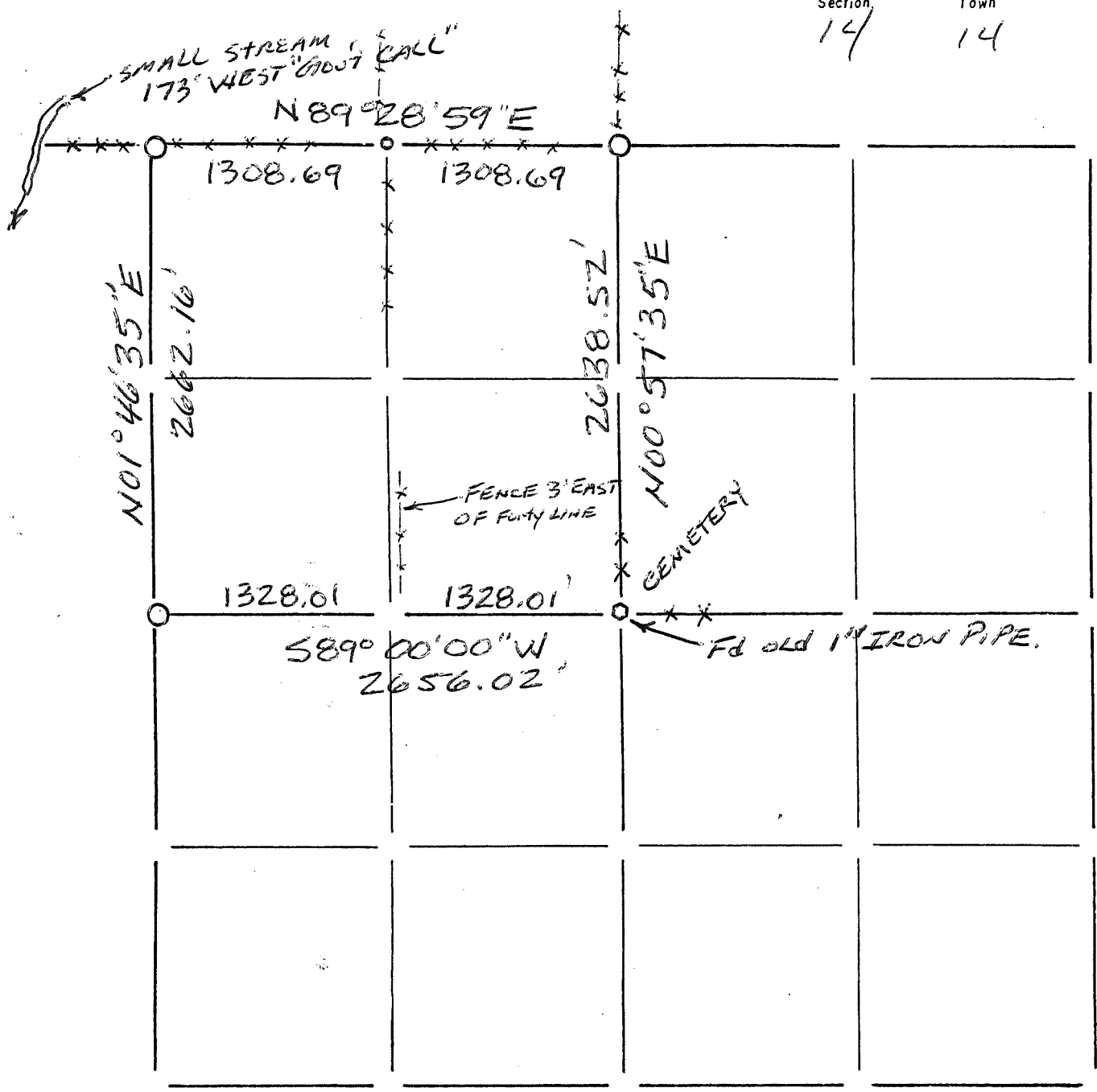


NOTE: BOTH CORNERS ARE VERNON COUNTY MONUMENTS.

THIS DATA SHEET PREPARED AS PART OF
VERNON COUNTY'S 1997 REMONUMENTATION PROJECT.

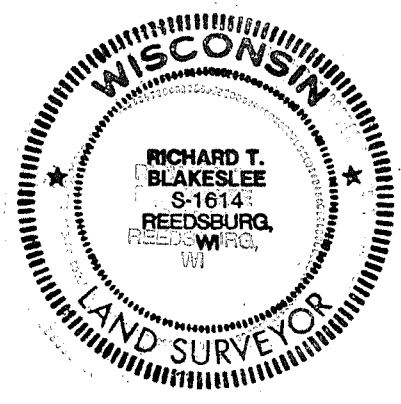
Section Summary and Index

Section 14 - 14 - 1E
 14 14 1E



LEGEND

- ⊕ - Harrison cast iron monument.
- - Stone or concrete monument.
- - Other 1/4" RE-BAR SET
- set 3/4" RE-BAR
- 1" IRON PIPE Fd.



Richard T. Blakeslee
 3-21-03

70