

# JUNEAU COUNTY SURVEY MONUMENT RECORD

CORNER NO. 54  
SECTION 18  
TOWN 14N.  
RANGE 2E.

TYPE OF MONUMENT: VERNON COUNTY MONUMENT

JUNEAU COUNTY COORDINATES  
NORTHING: 118,600.94  
EASTING: 400,373.75

■ = CORNER MONUMENT RESTORED

BASIS FOR MONUMENT LOCATION  
(USE REVERSE SIDE IF NECESSARY)

SHOW INFO SUCH AS: HISTORY OF CORNER, WITH REFERENCE TO VOLUME AND PAGE DATES, SURVEYOR, EXACT DESCRIPTION OF MONUMENT PLACED OR FOUND, IF LOCATION COMPUTED, BY TAPED OR EDM TRAVERSE, LANDOWNER REMARKS, ETC.



VERNON COUNTY MONUMENT FOUND AS PER TIE SHEET DATED 12/22/1998 BY CARL SANDSNES.

## LEGEND

- = VERNON COUNTY MONUMENT FOUND
- = 3/4" X 24" IRON ROD SET
- = 3/4" DIAMETER IRON ROD FOUND
- ( ) = PREVIOUSLY RECORDED AS



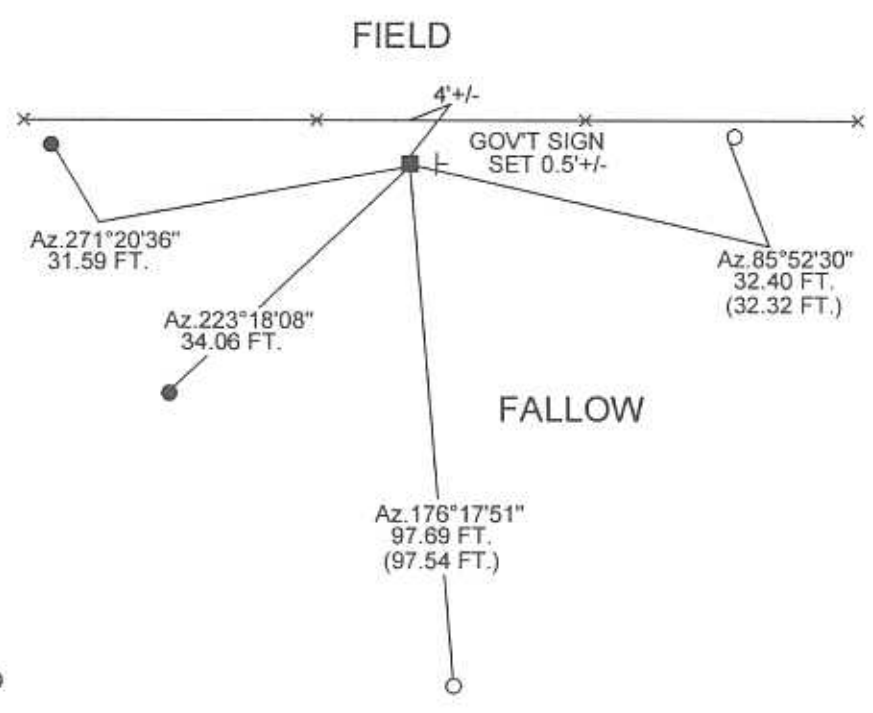
TIE SKETCH  
(SHOW AT LEAST FOUR TIES)

CERTIFIED CORRECT  
*Patrick J. Dederich*  
REGISTERED LAND SURVEYOR  
DATE 6/18/2004

NOT TO SCALE



BEARINGS ARE BASED ON THE JUNEAU COUNTY COORDINATE SYSTEM UNLESS OTHERWISE NOTED



# FOR VERNON COUNTY, WISCONSIN

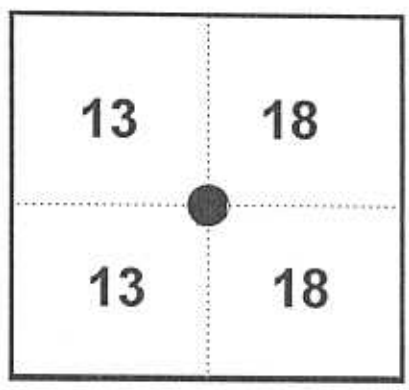
Note: This form is intended and designed to fulfill all requirements of Wisconsin Administrative Code, Chapter AE-7.08, U.S. Public Land Survey Monument Record (3)(a)(b)(c)(d)(e)(f)(g)(h)(i). Use additional sheets if necessary.

(a) The One Quarter corner common to Sections 13, 18

Township(s) 14 North, Range(s) 1, 2 East.

Vernon County Coordinates: N 198789.963

Datum: \_\_\_\_\_ E 854575.660



(b)(f)(h) Description of monument found at this corner and if it was accepted, state all evidence (material, testimonial, occupational, plats records, other monuments) used as a basis for accepting. If not accepted or nothing was found, state evidence used as basis for establishing location and what was set. If re-established through lost corner proportionate methods, indicate all monuments, distances and directions used.

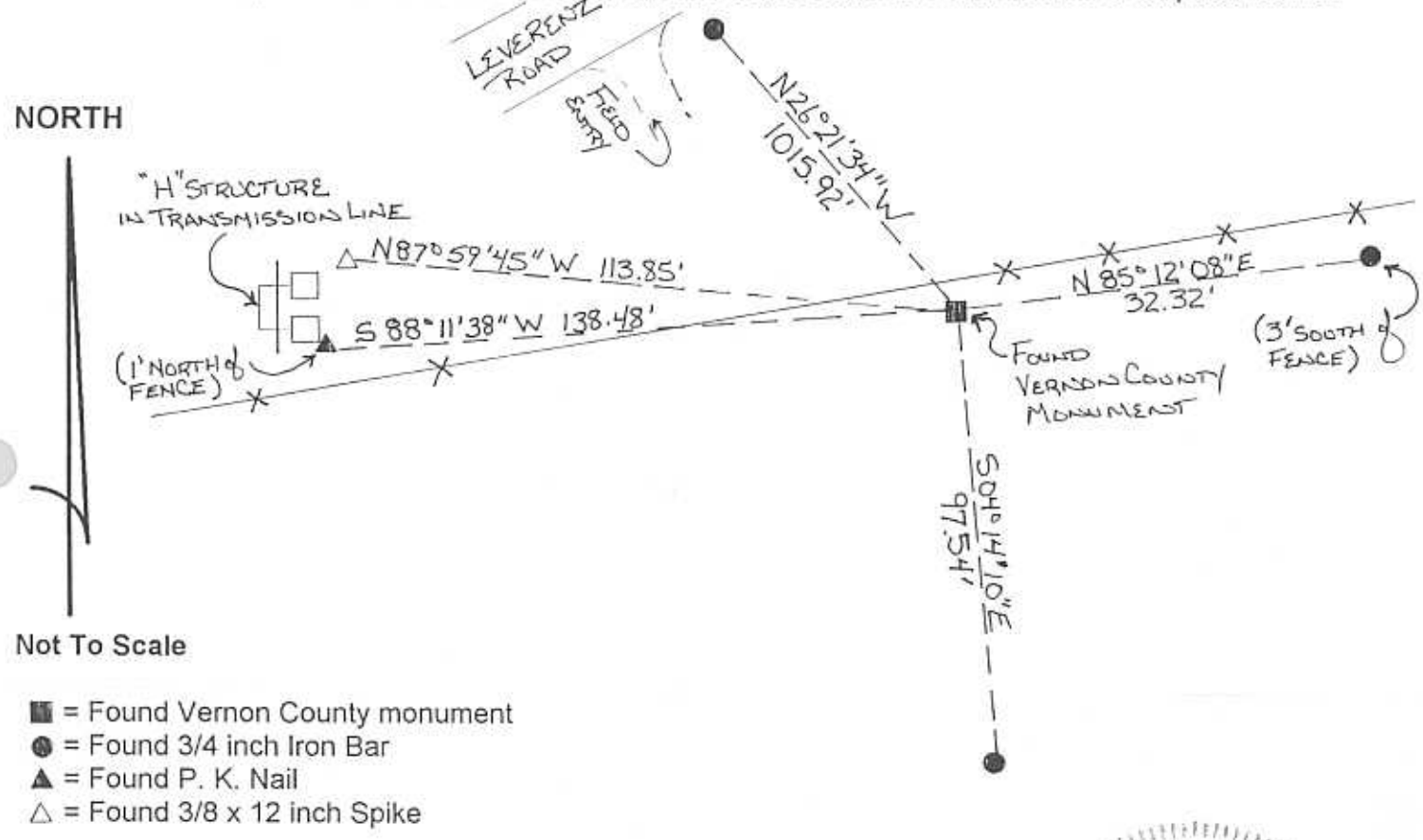
1845 - J.E. Witcher established original corner

1979 - John L. Brey set a 3/4 inch Iron Bar at corner location. ( C.S.M. Vol 1, page 68)

11-12-1997 - F. Curtis Crook found and accepted 3/4 inch Iron Bar. Replaced said Iron Bar with a Vernon county monument and set reference monuments.

11-10-98 - I found Vernon County Monument with reference monuments in place as shown.

(c)(d)(e) Plan view of corner with ties to at least four (4) witness monuments. If in disagreement with previously established corner, show the distances between the two corners and also indicate ties to disputed corner.



Not To Scale

- = Found Vernon County monument
- = Found 3/4 inch Iron Bar
- ▲ = Found P. K. Nail
- △ = Found 3/8 x 12 inch Spike

(I) Certify that the corner location on this record was determined by me or under my direction and control and that this U.S. Public Land survey Monument Record is correct and complete to the best of my knowledge and belief.

*[Handwritten Signature]*  
Signature

12/22/98  
Date



DEC 17 1997

CERTIFIED LAND CORNER

STATE OF WISCONSIN )  
COUNTY OF VERNON ) S.S.

CERTIFICATE

I, F. CURTIS CROOK do hereby certify  
that on the 12th day of NOVEMBER 1997,  
I found (evidence) ~~(no evidence)~~ of the E 1/4  
corner of SECTION 13, T 14 N, R 1 E,  
Fourth Principal Meridian, and I re-established  
said corner according to the Wisconsin Statutes  
as shown and described hereon.

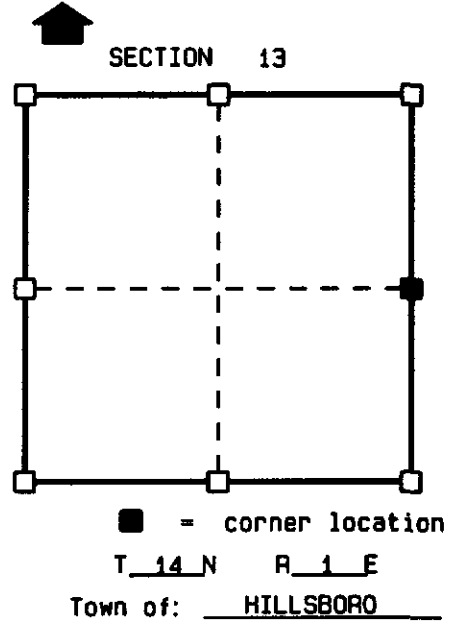
Dated this 15th day of Dec 1997

F. CURTIS CROOK R.L.S. S-1292

Title



Seal



History of original corner establishment:

ORIGINAL CORNER ESTABLISHED BY J.E. WHITCHER IN 1845.  
JOHN L. BREY SET A 3/4" IRON BAR AT THE CORNER IN 1979 (C.S.M. V.1, P.68).

Description of corner evidence found:

FOUND AND ACCEPTED LOCATION OF 3/4" IRON BAR AS MENTIONED ABOVE.  
REPLACED SAID BAR WITH A VERNON COUNTY MONUMENT AND MADE TIES AS SHOWN BELOW.

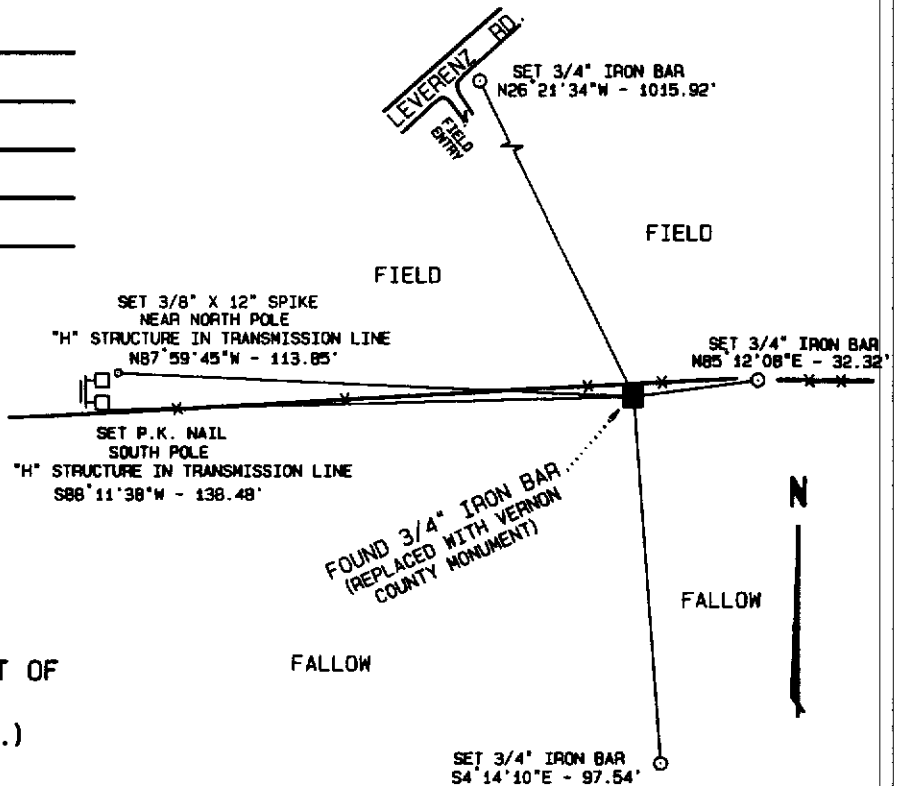
Description of corner and witness monuments, references and accessories used to perpetuate the original or re-established location of this corner:

Witnesses to corner location:

- F. CURTIS CROOK
- CHAD CROOK
- BRENT EWING

NOTES:  
DRAWING IS NOT TO SCALE.  
BEARINGS ARE REFERENCED TO PROJECT.  
VERNON COUNTY MONUMENTS ARE  
LUNDE MONUMENTS.  
SET SURVEY MARKER SIGN NEAR MONUMENT.

Sketch:



(THIS CORNER SET AS PART OF  
VERNON COUNTY'S 1997  
REMONUMENTATION PROJECT.)

VERNON COUNTY COORDINATES

North (Y)	East (X)
198789.654	854575.737

17A