



(E) DESCRIBE ANY MATERIAL DISCREPANCY BETWEEN THE LOCATION OF THE CORNER AS RESTORED OR REESTABLISHED AND THE LOCATION OF THAT CORNER AS PREVIOUSLY RESTORED OR REESTABLISHED BY DISTANCE AND DIRECTION. SHOW THE DISCREPANCY ON THE PLAN VIEW DRAWING UNDER (D), ABOVE. SHOW THE DISTANCES BETWEEN THE CORNER AS PREVIOUSLY RESTORED OR REESTABLISHED AND (1) THE CORNER AS RESTORED OR REESTABLISHED, AND (2) TO AT LEAST 2 OF THE WITNESS MONUMENTS AS SHOWN ON THE DRAWING IN (D), ABOVE.

NONE.

(F) WAS THE CORNER RESTORED THROUGH ACCEPTANCE OF (1) AN OBLITERATED EVIDENCE LOCATION, OR (2) A FOUND PERPETUATED LOCATION?

(2)

(G & H) WAS THE CORNER REESTABLISHED THROUGH LOST CORNER PROPORTIONATE METHODS? IF SO SHOW THE METHOD, INCLUDING THE DIRECTION AND DISTANCES TO OTHER PUBLIC LAND SURVEY CORNERS USED AS EVIDENCE OR USED FOR PROPORTIONING IN DETERMINING THE CORNER LOCATION.

No.

### CORNER HISTORY

- 1) ORIG. SUBDIVISION OF TOWN 14 NORTH, RANGE 1 EAST BY JOHNE. DAVIDSON, DEC. 1851 - JAN 1852.
- 2) CORNER VISITED BY COUNTY SURVEYOR STERLING, OCT. 19-21, 1897, WHILE WORKING IN SECTION 24.
- 3) MODERN TIE SHEET E CORNER SET BY CARL SANDS NRS PLS, 12/24/98.
- 4) SANDS NRS REMONUMENTATION DOCUMENTATION SHEET DATED 12/31/98.

AFFIX LAND SURVEYOR SEAL

(I) I, GREG FAUERBACH CERTIFY THAT THE LOCATION SHOWN ON THIS RECORD WAS DETERMINED BY ME OR UNDER MY DIRECTION AND CONTROL AND THAT THIS U.S. PUBLIC LAND SURVEY MONUMENT RECORD IS CORRECT AND COMPLETE TO THE BEST OF MY KNOWLEDGE AND BELIEF.

Greg A. Fauerbach 9-10-21  
SIGNATURE DATE



**FOR VERNON COUNTY, WISCONSIN**

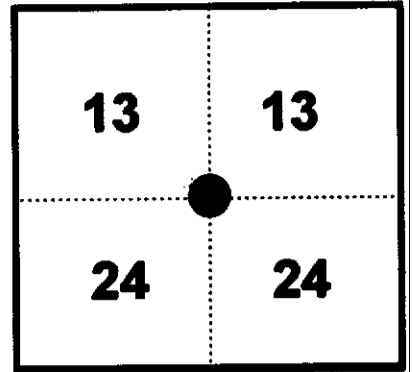
Note: This form is intended and designed to fulfill all requirements of Wisconsin Administrative Code, Chapter AE-7.08, U.S. Public Land Survey Monument Record (3)(a)(b)(c)(d)(e)(f)(g)(h)(i). Use additional sheets if necessary.

(a) The One Quarter corner common to Sections 13.24

Township(s) 14 North, Range(s) 1 East.

Vernon County Coordinates: N 19605.229

Datum: \_\_\_\_\_ E 851920.384

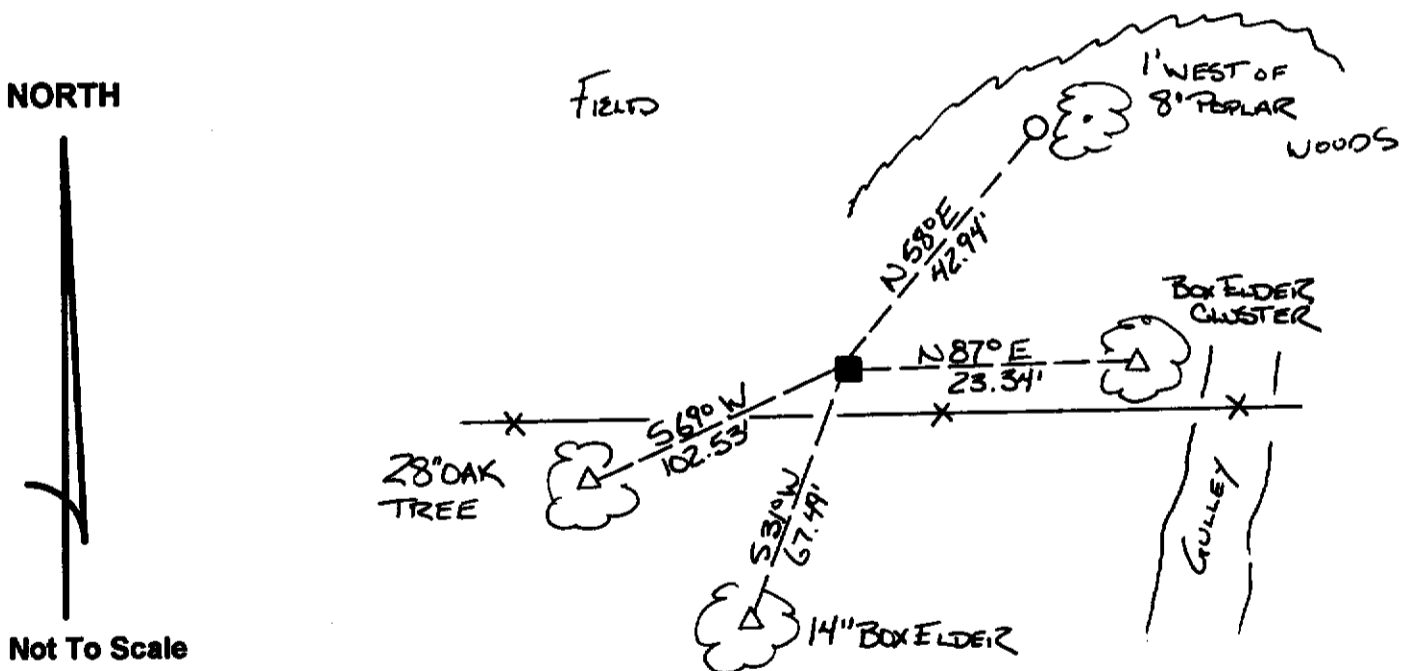


(b)(f)(h) Description of monument found at this corner and if it was accepted, state all evidence (material, testimonial, occupational, plats records, other monuments) used as a basis for accepting. If not accepted or nothing was found, state evidence used as basis for establishing location and what was set. If re-established through lost corner proportionate methods, indicate all monuments, distances and directions used.

1845 - James M. Marsh established corner location 40.23 chains (2655.18') west of the range line. Overall mile 80.46 chains.

11-9-98 - Set Vernon County Monument by holding East - West fence line and an Equal - distant split between Southwest and Southeast corners and set witness monuments as shown.

(c)(d)(e) Plan view of corner with ties to at least four (4) witness monuments. If in disagreement with previously established corner, show the distances between the two corners and also indicate ties to disputed corner.



Not To Scale

- = Set Vernon County Monument
- = Set 3/8 inch Rebar
- △ = Set 60d Nail (as noted)

(I) Certify that the corner location on this record was determined by me or under my direction and control and that this U.S. Public Land survey Monument Record is correct and complete to the best of my knowledge and belief.



*[Handwritten Signature]*  
Signature

12/22/98  
Date

Filed for record in Vernon County Surveyor's Office on \_\_\_\_\_ INDEX NO. \_\_\_\_\_

①