

JUNEAU COUNTY SURVEY MONUMENT RECORD

CORNER NO. 34
SECTION 7
TOWN 14N.
RANGE 2E.

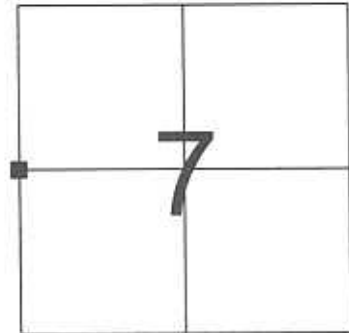
TYPE OF MONUMENT: 1 1/2" DIAMETER DRILL STEEL WVERNON COUNTY CAP

JUNEAU COUNTY COORDINATES
NORTHING: 123,901.53
EASTING: 400,410.05

■ = CORNER MONUMENT RESTORED

BASIS FOR MONUMENT LOCATION
(USE REVERSE SIDE IF NECESSARY)

SHOW INFO SUCH AS: HISTORY OF CORNER, WITH REFERENCE TO VOLUME AND PAGE DATES, SURVEYOR; EXACT DESCRIPTION OF MONUMENT PLACED OR FOUND, IF LOCATION COMPUTED, BY TAPED OR EDM TRAVERSE; LANDOWNER REMARKS, ETC.



LOCATION

FOUND 1 1/2" DIAMETER DRILL STEEL WITH VERNON COUNTY CAP AS PER TIE SHEET DATED 12/22/1998 BY CARL SANDSNES.

LEGEND

- = 1 1/2" DIAMETER DRILL STEEL WVERNON CO. CAP FOUND
- = 3/4" X 24" IRON ROD SET
- () = PREVIOUSLY RECORDED AS



TIE SKETCH
(SHOW AT LEAST FOUR TIES)

CERTIFIED CORRECT

Patrick J. Dederich
REGISTERED LAND SURVEYOR

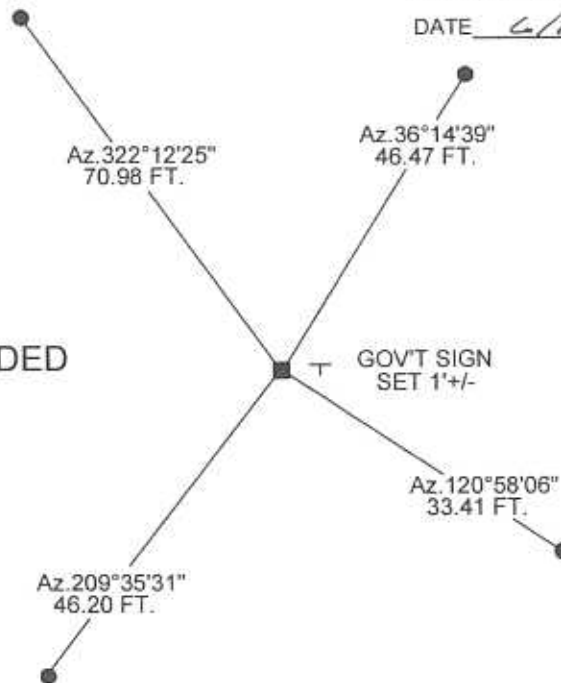
DATE 6/19/2004

NOT TO SCALE



BEARINGS ARE BASED
ON THE JUNEAU COUNTY
COORDINATE SYSTEM
UNLESS OTHERWISE NOTED

WOODED



MARSH

JUNEAU COUNTY

Survey Monument Record

TYPE OF MONUMENT: 1 1/2" x 60" Drill Steel

STATE PLANE COORDINATES: N _____
E _____

ELEVATION — M.S.L. DATUM: _____

THETA ANGLE: _____

FIELD BOOK: _____ PAGE _____

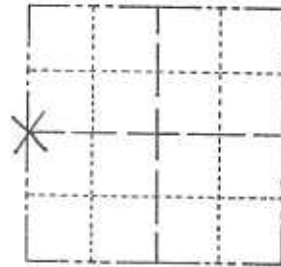
Page 1 34

CORNER NO. ~~34~~

SECTION 7

TOWN 14

RANGE 2



LOCATION
(Indicated by 'X')

SEAL:



BASIS FOR MONUMENT LOCATION

(Use reverse side if necessary)

Show info such as: History of corner, with reference to Vol. and pg. dates, surveyor; exact description of monument replaced; if location computed, by taped or EDM traverse; landowner remarks, etc.

*Set this corner from
Survey Map of
Millard's Prairie
Cemetery*

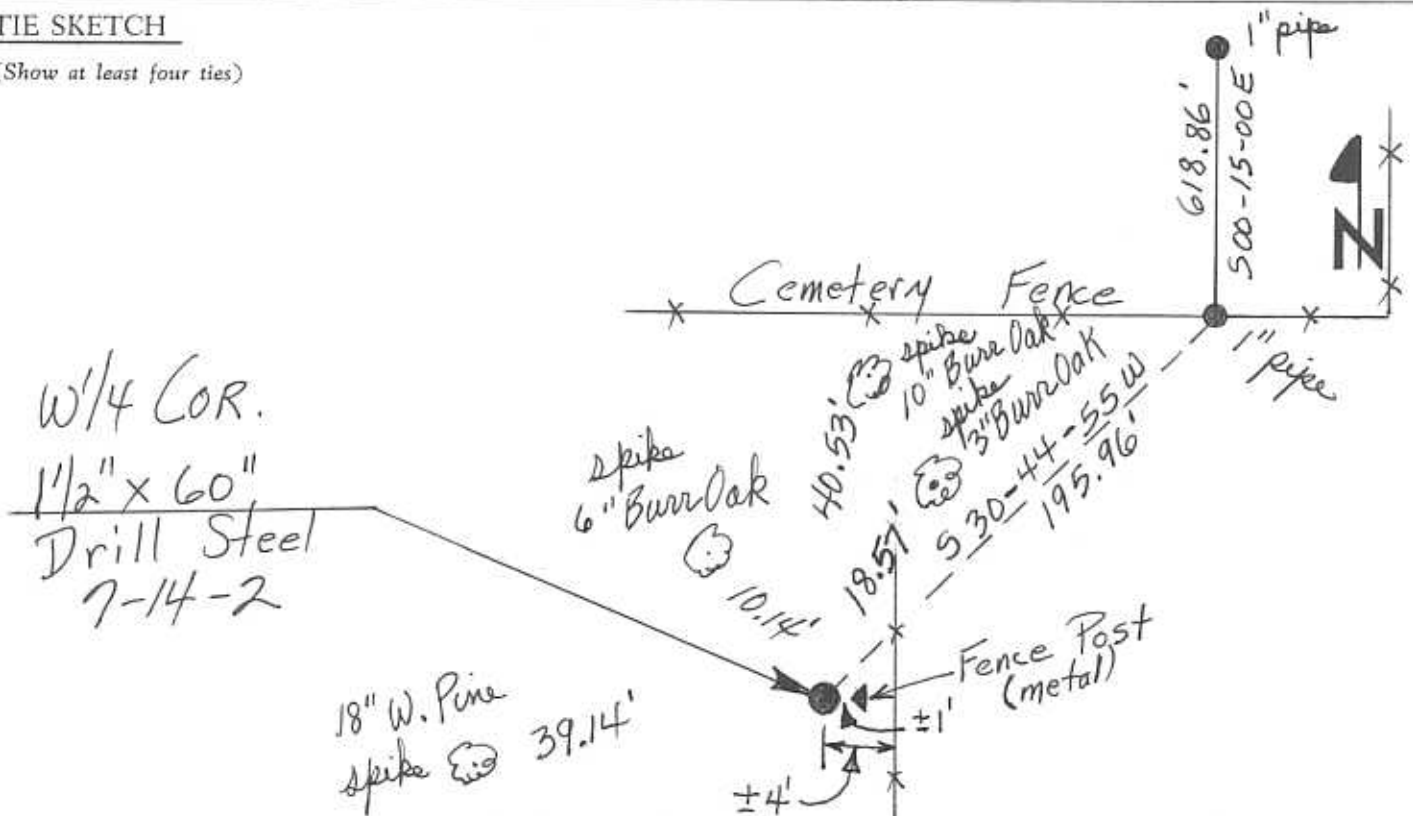
CERTIFIED CORRECT:

James J. Carroll
Registered Land Surveyor

DATE: 2-10-97

TIE SKETCH

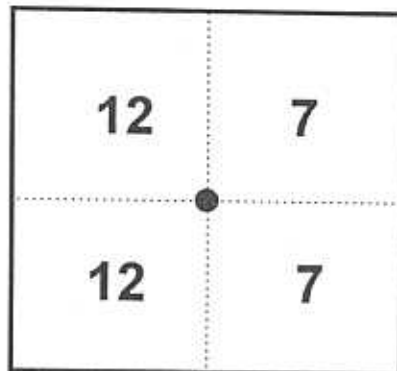
(Show at least four ties)



FOR VERNON COUNTY, WISCONSIN

Note: This form is intended and designed to fulfill all requirements of Wisconsin Administrative Code, Chapter AE-7.08, U.S. Public Land Survey Monument Record (3)(a)(b)(c)(d)(e)(f)(g)(h)(i). Use additional sheets if necessary.

(a) The One Quarter corner common to Sections 7,12



Township(s) 14 North, Range(s) 1,2 East.

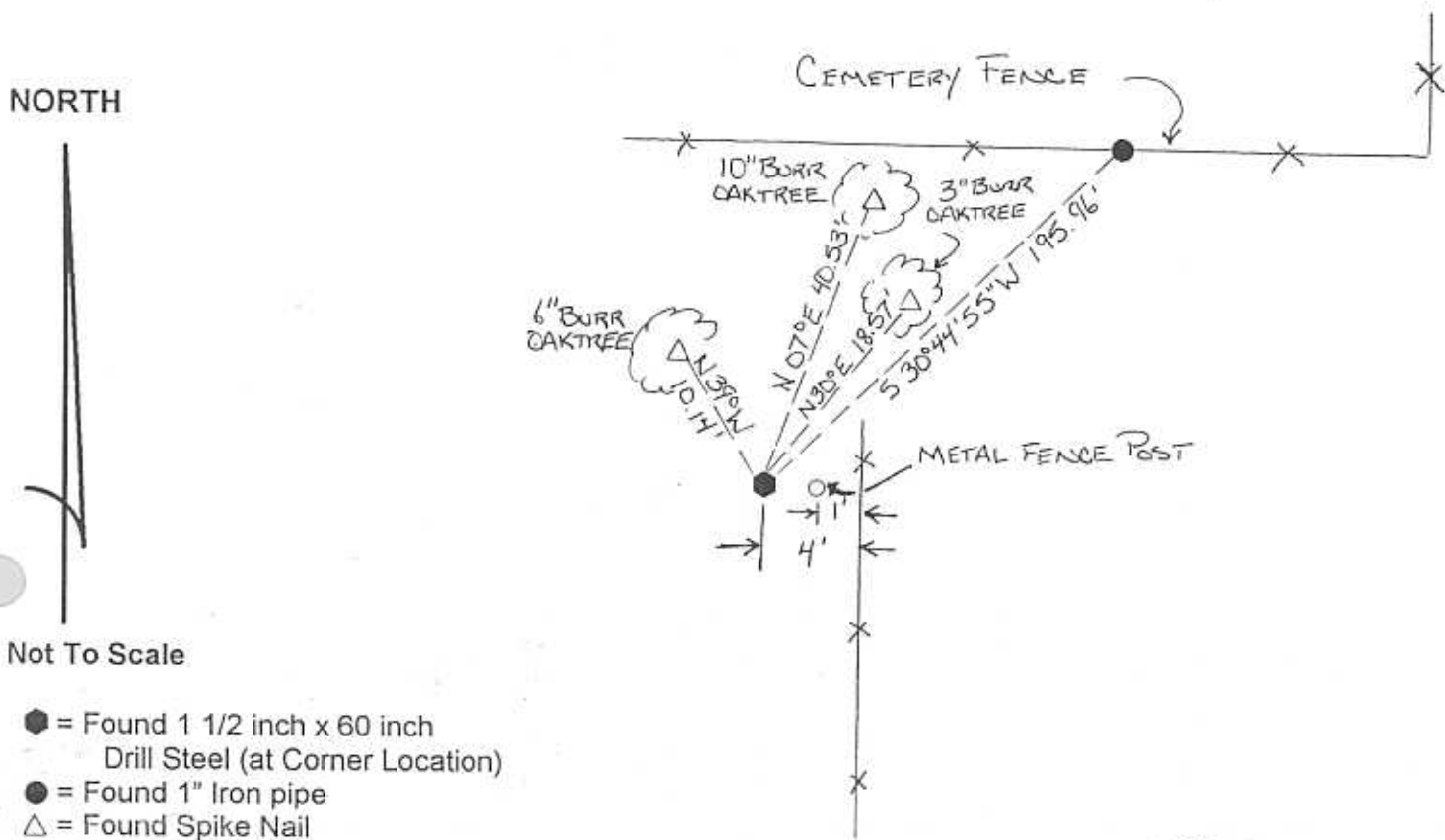
Vernon County Coordinates: N 204090.290

Datum: _____ E 854561.773

(b)(f)(h) Description of monument found at this corner and if it was accepted, state all evidence (material, testimonial, occupational, plats records, other monuments) used as a basis for accepting. If not accepted or nothing was found, state evidence used as basis for establishing location and what was set. If re-established through lost corner proportionate methods, indicate all monuments, distances and directions used.

1-5-98 - Found 1 1/2 inch x 60 inch Drill Steel and reference monuments as shown on Survey Monument Record No. 34, Juneau County by James J. Carroll dated 02-10-1997.

(c)(d)(e) Plan view of corner with ties to at least four (4) witness monuments. If in disagreement with previously established corner, show the distances between the two corners and also indicate ties to disputed corner.



Not To Scale

- = Found 1 1/2 inch x 60 inch Drill Steel (at Corner Location)
- = Found 1" Iron pipe
- △ = Found Spike Nail

(I) Certify that the corner location on this record was determined by me or under my direction and control and that this U.S. Public Land survey Monument Record is correct and complete to the best of my knowledge and belief.

[Handwritten Signature]
Signature

12/22/98
Date

