

**VERNON COUNTY**  
**CERTIFIED U.S. PUBLIC LAND SURVEY MONUMENT RECORD**

INSTRUCTIONS: THIS RECORD SHALL SHOW THE LOCATION OF THE CORNER AND SHALL INCLUDE ALL OF THE FOLLOWING ELEMENTS (A-I)

*FOUND 2 1/4" O.D. IRON PIPE @ QUARTER CORNER.*

(A) IDENTIFY THE CORNER BY REFERENCE *TOP OF PIPE* TO THE U.S. PUBLIC LAND SURVEY SYSTEM *IS MUSHROOMED.*

■ = CORNER MONUMENT RESTORED

WITNESSES TO CORNER LOCATION:

- 1)
- 2)
- 3)

STATE PLANE COORDINATES (WISCONSIN SOUTH ZONE)

NORTHING:

EASTING:

*WISCORS NAD 83 (2011)*

VERNON COUNTY COORDINATES

NORTHING:

EASTING:

*N 201,386.95*  
*E 851,931.41*

*COORDINATES SHOWN COMPLY WITH "SURVEY GRADE" SPEC. PER WIS. CSA.*

(B) DESCRIBE ANY RECORD EVIDENCE, MONUMENT EVIDENCE, OCCUPATIONAL EVIDENCE, TESTIMONIAL EVIDENCE OR ANY OTHER MATERIAL EVIDENCE YOU CONSIDERED, AND WHETHER THE MONUMENT WAS FOUND OR PLACED.

*ACCEPTED THIS CORNER AS SET FORTH BY CARL SANDSNES IN HIS 12/22/98 TIE SHEET. I SET NEW TIES, A GOVT SIGN & REVISED THE COORDINATES.*

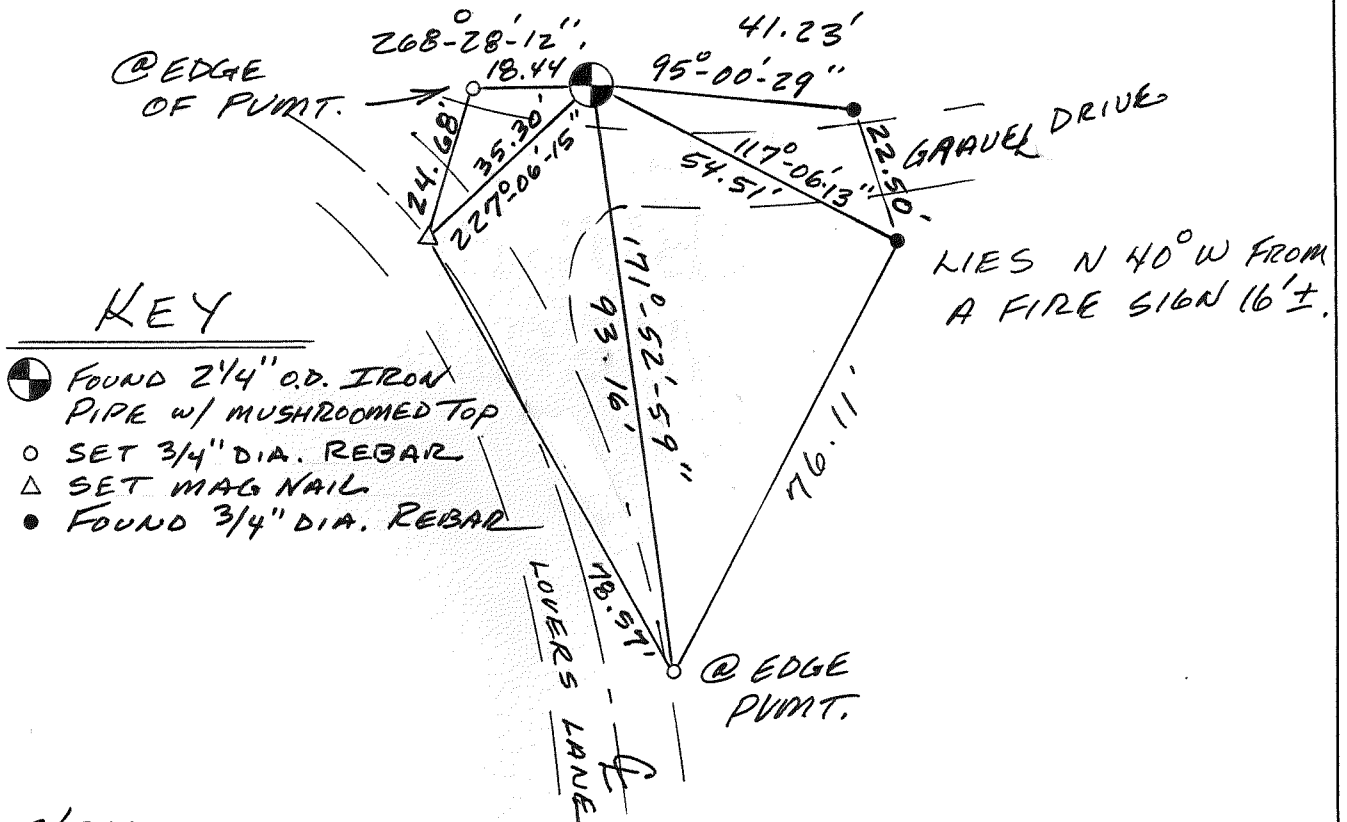
(C) IN THE PLAN VIEW DRAWING BELOW, PROVIDE REFERENCE TIES TO AT LEAST 4 WITNESS MONUMENTS OR, IF THE LOCATION IS WITHIN A MUNICIPALITY, TO AT LEAST 2 WITNESS MONUMENTS. (WITNESS MONUMENTS SHALL BE MADE OF CONCRETE, NATURAL STONE, IRON, OR OTHER EQUALLY DURABLE MATERIAL.) DESCRIBE WITNESS MONUMENTS.

*ALL AZIMUTHS SHOWN ARE VERNON Co. WISCORS NAD 83 (2011).*

*\* GOVT. SIGN SET 0.6' SSWLY OF CORNER*

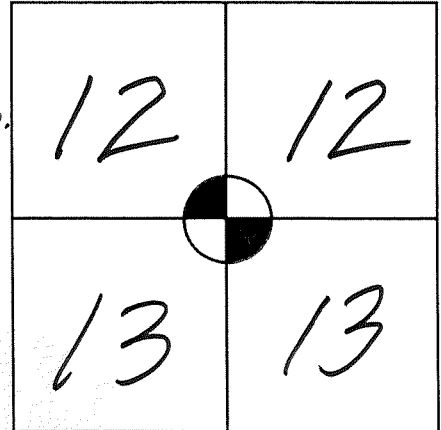
(D) SHOW A PLAN VIEW DRAWING, DEPICTING THE RELEVANT MONUMENTS AND REFERENCE TIES, WHICH IS SUFFICIENTLY DETAILED TO ENABLE ACCURATE RELOCATION OF THE CORNER MONUMENT IF IT IS DISTURBED.

*30 SCALE*



*53615/54417*

*TOWN OF HILLSBORO*  
*R 1 E*



(E) DESCRIBE ANY MATERIAL DISCREPANCY BETWEEN THE LOCATION OF THE CORNER AS RESTORED OR REESTABLISHED AND THE LOCATION OF THAT CORNER AS PREVIOUSLY RESTORED OR REESTABLISHED BY DISTANCE AND DIRECTION. SHOW THE DISCREPANCY ON THE PLAN VIEW DRAWING UNDER (D), ABOVE. SHOW THE DISTANCES BETWEEN THE CORNER AS PREVIOUSLY RESTORED OR REESTABLISHED AND (1) THE CORNER AS RESTORED OR REESTABLISHED, AND (2) TO AT LEAST 2 OF THE WITNESS MONUMENTS AS SHOWN ON THE DRAWING IN (D), ABOVE.

NONE.

(F) WAS THE CORNER RESTORED THROUGH ACCEPTANCE OF (1) AN OBLITERATED EVIDENCE LOCATION, OR (2) A FOUND PERPETUATED LOCATION?

(2)

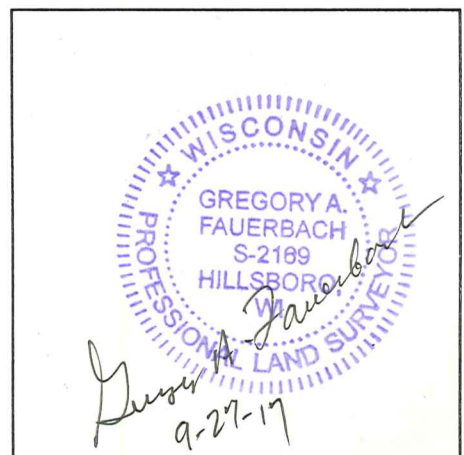
(G & H) WAS THE CORNER REESTABLISHED THROUGH LOST CORNER PROPORTIONATE METHODS? IF SO SHOW THE METHOD, INCLUDING THE DIRECTION AND DISTANCES TO OTHER PUBLIC LAND SURVEY CORNERS USED AS EVIDENCE OR USED FOR PROPORTIONING IN DETERMINING THE CORNER LOCATION.

No.

(I) I, GREG FAUERBACH CERTIFY THAT THE LOCATION SHOWN ON THIS RECORD WAS DETERMINED BY ME OR UNDER MY DIRECTION AND CONTROL AND THAT THIS U.S. PUBLIC LAND SURVEY MONUMENT RECORD IS CORRECT AND COMPLETE TO THE BEST OF MY KNOWLEDGE AND BELIEF.

Greg Faerbach 9-28-17  
SIGNATURE DATE

AFFIX LAND SURVEYOR SEAL



53615/54417

**FOR VERNON COUNTY, WISCONSIN**

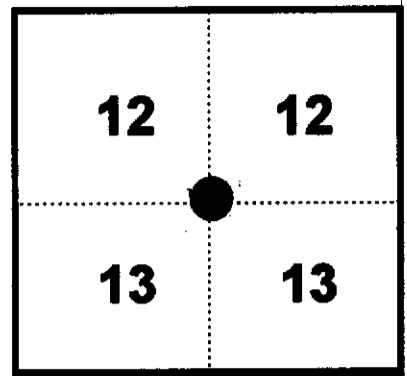
Note: This form is intended and designed to fulfill all requirements of Wisconsin Administrative Code, Chapter AE-7.08, U.S. Public Land Survey Monument Record (3)(a)(b)(c)(d)(e)(f)(g)(h)(i). Use additional sheets if necessary.

(a) The One Quarter corner common to Sections 12,13

Township(s) 14 North, Range(s) 1 East.

~~VERNON COUNTY~~  
Coordinates: N 201387.228

Datum: \_\_\_\_\_ E 851931.762



(b)(f)(h) Description of monument found at this corner and if it was accepted, state all evidence (material, testimonial, occupational, plats records, other monuments) used as a basis for accepting. If not accepted or nothing was found, state evidence used as basis for establishing location and what was set. If re-established through lost corner proportionate methods, indicate all monuments, distances and directions used.

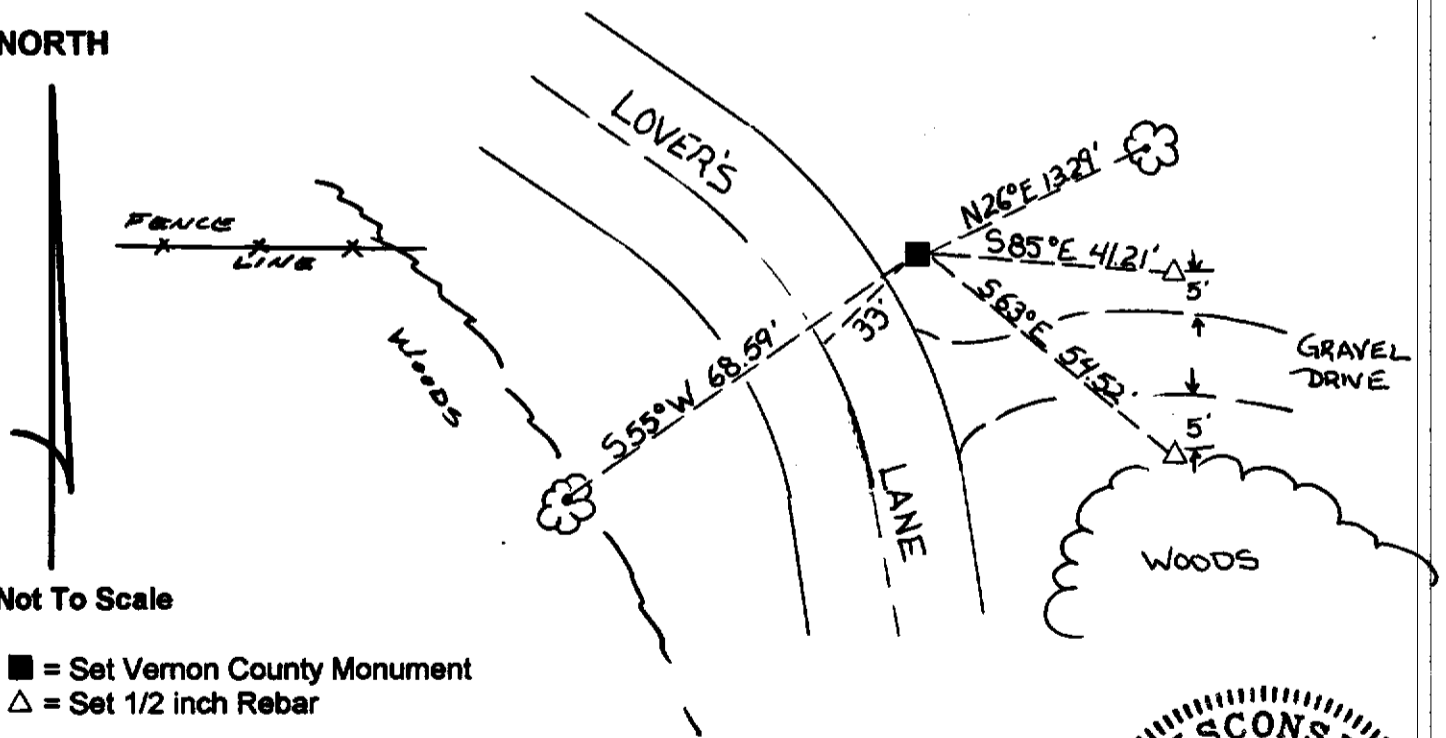
1845 - ~~J. E. Day~~ established original corner location 39.86 chains from the S.W. corner of Sec. 24 overall mile 79.72 chains (equal distant split).

04-28-1990 - James J. Carroll Plat of Survey placed an 1 inch Iron Pipe marking corner location. 1/2 mile of South 1/4 of section 12 to Southeast corner of said Section shown to measure 2638.56 feet.

11-5-1998 - I found 1inch Iron Pipe, replaced it with Vernon County Monument and set reference monuments as shown.

(c)(d)(e) Plan view of corner with ties to at least four (4) witness monuments. If in disagreement with previously established corner, show the distances between the two corners and also indicate ties to disputed corner.

**NORTH**



Not To Scale

- = Set Vernon County Monument
- △ = Set 1/2 inch Rebar

(I) Certify that the corner location on this record was determined by me or under my direction and control and that this U.S. Public Land survey Monument Record is correct and complete to the best of my knowledge and belief.



*[Handwritten Signature]*  
Signature

12/22/98  
Date

Filed for record in Vernon County Surveyor's Office on \_\_\_\_\_ INDEX NO. \_\_\_\_\_