

# VERNON COUNTY CERTIFIED U.S. PUBLIC LAND SURVEY MONUMENT RECORD

INSTRUCTIONS: THIS RECORD SHALL SHOW THE LOCATION OF THE CORNER AND SHALL INCLUDE ALL OF THE FOLLOWING ELEMENTS (A-I)

(A) IDENTIFY THE CORNER BY REFERENCE TO THE U.S. PUBLIC LAND SURVEY SYSTEM

■ = CORNER MONUMENT RESTORED

WITNESSES TO CORNER LOCATION:

- 1) RICHARD BLAKESLEE
- 2) JOSH MURPHY

VERNON COUNTY COORDINATES

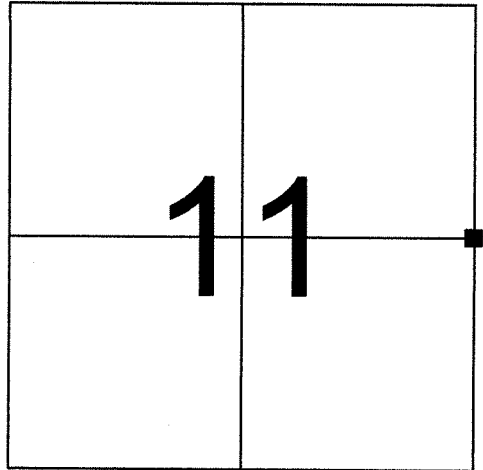
NORTHING: 203928.11

EASTING: 849285.96

G.P.S. DONE ON 12-20-2018 11:00 AM (NAD 83/2011) USING VRS

COORDINATES MEET THE WISCONSIN COUNTY SURVEYOR'S ASSOCIATION SURVEY GRADE STANDARD AND CORRESPONDING DATUM.

SECTION 11, TOWN 14 NORTH, RANGE 1 EAST  
TOWN OF HILLSBORO



(B) DESCRIBE ANY RECORD EVIDENCE, MONUMENT EVIDENCE, OCCUPATIONAL EVIDENCE, TESTIMONIAL EVIDENCE OR ANY OTHER MATERIAL EVIDENCE YOU CONSIDERED, AND WHETHER THE MONUMENT WAS FOUND OR PLACED.

CORNER HISTORY:

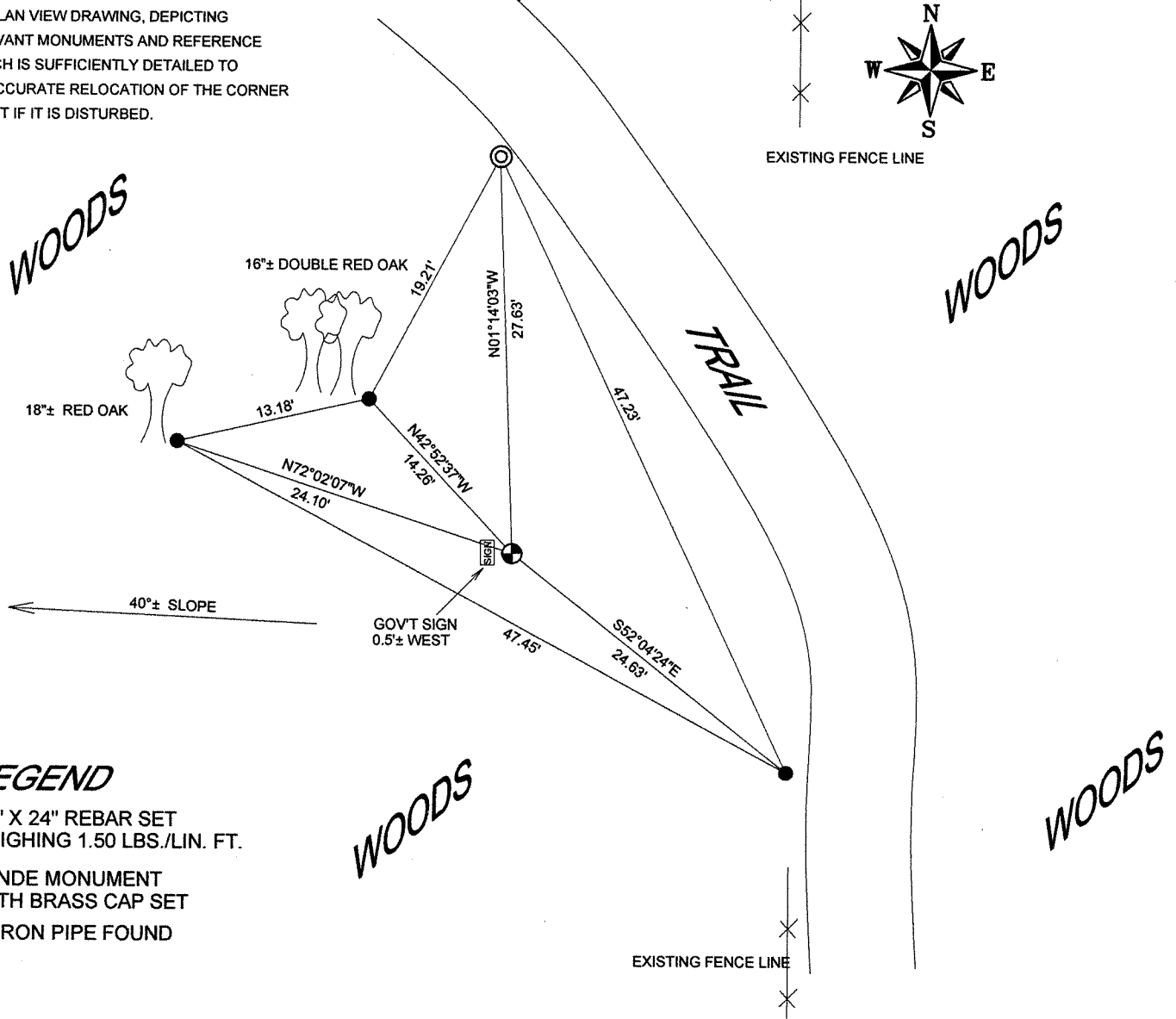
ORIGINAL GOVERNMENT CORNER LOCATION ESTABLISHED BY J.E. DAVIDSON, DECEMBER 1851.

DECEMBER 22, 1998 SURVEYOR CARL SANDSNES SET A VERNON COUNTY MONUMENT WITH A BRASS CAP PER HIS TIE SHEET ON FILE.

WE FOUND SANDSNES MONUMENT DISTURBED AND RE-SET THE CORNER USING THE SAME METHOD AS SANDSNES USED IN 1998.

(C) IN THE PLAN VIEW DRAWING BELOW, PROVIDE REFERENCE TIES TO AT LEAST 4 WITNESS MONUMENTS OR, IF THE LOCATION IS WITHIN A MUNICIPALITY, TO AT LEAST 2 WITNESS MONUMENTS. (WITNESS MONUMENTS SHALL BE MADE OF CONCRETE, NATURAL STONE, IRON, OR OTHER EQUALLY DURABLE MATERIAL.) DESCRIBE WITNESS MONUMENTS.

(D) SHOW A PLAN VIEW DRAWING, DEPICTING THE RELEVANT MONUMENTS AND REFERENCE TIES, WHICH IS SUFFICIENTLY DETAILED TO ENABLE ACCURATE RELOCATION OF THE CORNER MONUMENT IF IT IS DISTURBED.



### LEGEND

- 3/4" X 24" REBAR SET WEIGHING 1.50 LBS./LIN. FT.
- ⊕ LUNDE MONUMENT WITH BRASS CAP SET
- ⊙ 2" IRON PIPE FOUND

(E) DESCRIBE ANY MATERIAL DISCREPANCY BETWEEN THE LOCATION OF THE CORNER AS RESTORED OR REESTABLISHED AND THE LOCATION OF THAT CORNER AS PREVIOUSLY RESTORED OR REESTABLISHED BY DISTANCE AND DIRECTION. SHOW THE DISCREPANCY ON THE PLAN VIEW DRAWING UNDER (D), ABOVE. SHOW THE DISTANCES BETWEEN THE CORNER AS PREVIOUSLY RESTORED OR REESTABLISHED AND (1) THE CORNER AS RESTORED OR REESTABLISHED, AND (2) TO AT LEAST 2 OF THE WITNESS MONUMENTS AS SHOWN ON THE DRAWING IN (D), ABOVE.

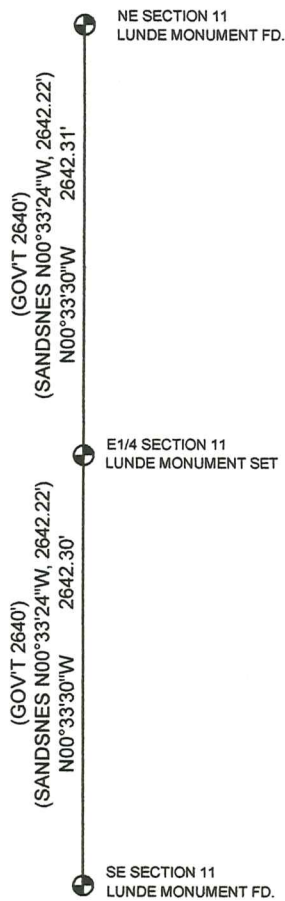
NONE

(F) WAS THE CORNER RESTORED THROUGH ACCEPTANCE OF (1) AN OBLITERATED EVIDENCE LOCATION, OR (2) A FOUND PERPETUATED LOCATION?

SANDSNES TIES WERE NOT VISIBLE DUE TO 20 YEARS OF TREE GROWTH. WE DETERMINED THAT IT WOULD BE MORE ACCURATE TO REESTABLISH THIS CORNER'S LOCATION BY USING THE SAME PROPORTIONATE METHOD AS HE USED IN 1998.

(G & H) WAS THE CORNER REESTABLISHED THROUGH LOST CORNER PROPORTIONATE METHODS? IF SO SHOW THE METHOD, INCLUDING THE DIRECTIONS AND DISTANCES TO OTHER PUBLIC LAND SURVEY CORNERS USED AS EVIDENCE OR USED FOR PROPORTIONING IN DETERMINING THE CORNER LOCATION.

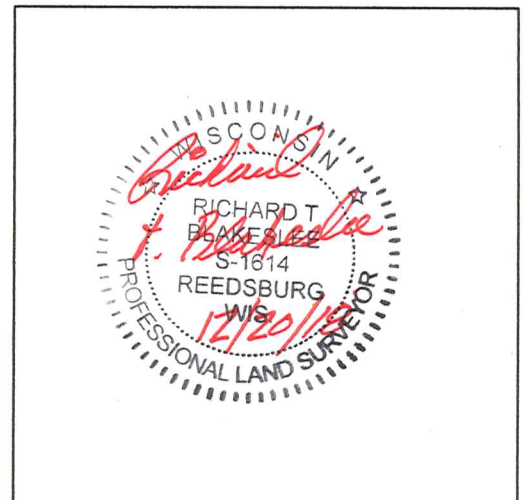
YES, SINGLE PROPORTIONATE MEASUREMENT



AFFIX LAND SURVEYOR SEAL

(I) I, RICHARD T. BLAKESLEE CERTIFY THAT THE LOCATION SHOWN ON THIS RECORD WAS DETERMINED BY ME OR UNDER MY DIRECTION AND CONTROL AND THAT THIS U.S. PUBLIC LAND SURVEY MONUMENT RECORD IS CORRECT AND COMPLETE TO THE BEST OF MY KNOWLEDGE AND BELIEF.

Richard T. Blakeslee      12/20/18  
SIGNATURE                      DATE



**FOR VERNON COUNTY, WISCONSIN**

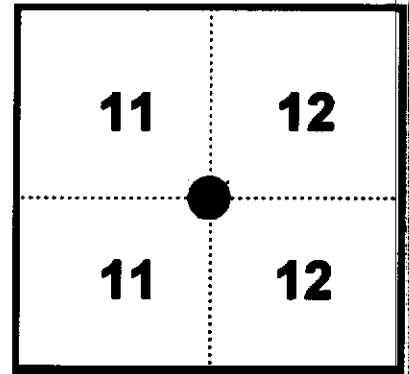
Note: This form is intended and designed to fulfill all requirements of Wisconsin Administrative Code, Chapter AE-7.08, U.S. Public Land Survey Monument Record (3)(a)(b)(c)(d)(e)(f)(g)(h)(i). Use additional sheets if necessary.

(a) The One Quarter corner common to Sections 11,12

Township(s) 14 North, Range(s) 1 East.

Vernon County Coordinates: N 203928.099

Datum: \_\_\_\_\_ E 849286.266

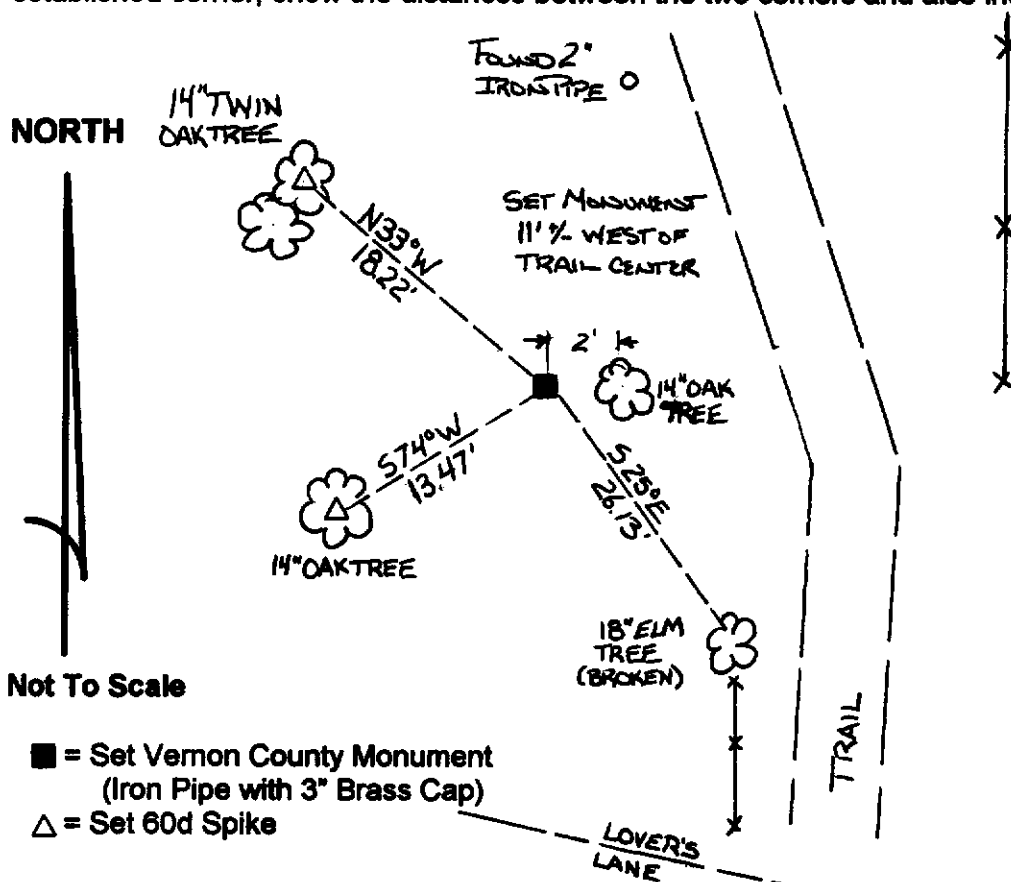


(b)(f)(h) Description of monument found at this corner and if it was accepted, state all evidence (material, testimonial, occupational, plats records, other monuments) used as a basis for accepting. If not accepted or nothing was found, state evidence used as basis for establishing location and what was set. If re-established through lost corner proportionate methods, indicate all monuments, distances and directions used.

12-26-1851- J. E. Davidson established corner location 40 chains North of the Northwest of Section 13. Overall mile equals 80 chains.

11-11-1998 - Set Vernon County monument equidistance split and reference monuments as shown.

(c)(d)(e) Plan view of corner with ties to at least four (4) witness monuments. If in disagreement with previously established corner, show the distances between the two corners and also indicate ties to disputed corner.



■ = Set Vernon County Monument (Iron Pipe with 3" Brass Cap)  
 △ = Set 60d Spike

(I) Certify that the corner location on this record was determined by me or under my direction and control and that this U.S. Public Land survey Monument Record is correct and complete to the best of my knowledge and belief.

Signature \_\_\_\_\_ Date 12/22/98



Filed for record in Vernon County Surveyor's Office on \_\_\_\_\_ INDEX NO. \_\_\_\_\_

15