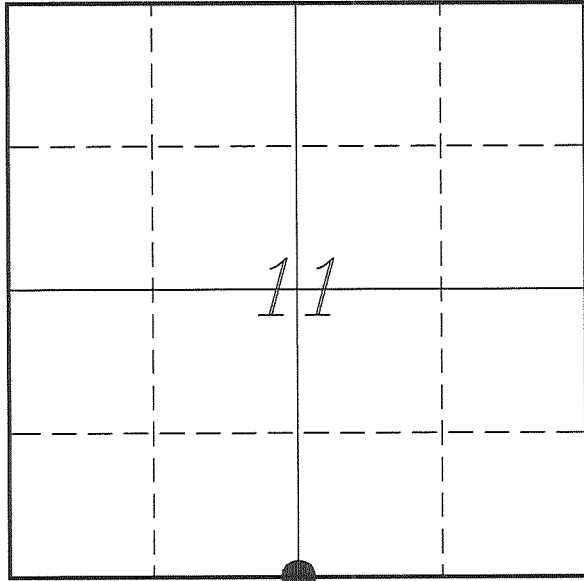

U. S. PUBLIC LAND SURVEY MONUMENT RECORD

SECTION 11, T14N, R1E, TOWN OF HILLSBORO VERNON COUNTY, WISCONSIN



LOCATION OF LANDMARK

Witnesses: Larry Handschy

VERNON COUNTY COORDINATE SYSTEM	
Northing	201212.198
Easting	846618.775
Datum	NAD 1983 (2011)
Elevation	
Datum	
TYPE OF LANDMARK:	
Set Lunde Monument 4" Brass Capped Iron Pipe	
BEARINGS ARE REFERENCED TO:	
Vernon County Coordinates (Survey Grade)	

Eagle Ridge Surveying
PO Box 213
Wilton, Wisconsin

Date: 12 April 2017

Describe any record evidence, monument evidence, testimonial evidence or any other material evidence you considered and whether the monument was found or restored through acceptance of an obliterated evidence location.

No bearing trees of record were located.

Found the 1 1/4" iron bar set by Blakeslee at the fence corner, could not find any of his local ties.

This monument is 38 feet West and 2 feet South of the mid-point between section corners.

The fence corner is a long standing occupation and it fits well with occupation to the North and the cemetery at the Center of Section 14.

It is possible that the government survey at dropped a half-chain when measuring back to establish this corner.

I accepted the location determined by Blakeslee as the best available evidence of the original government corner and replaced it with a Lunde Monument.

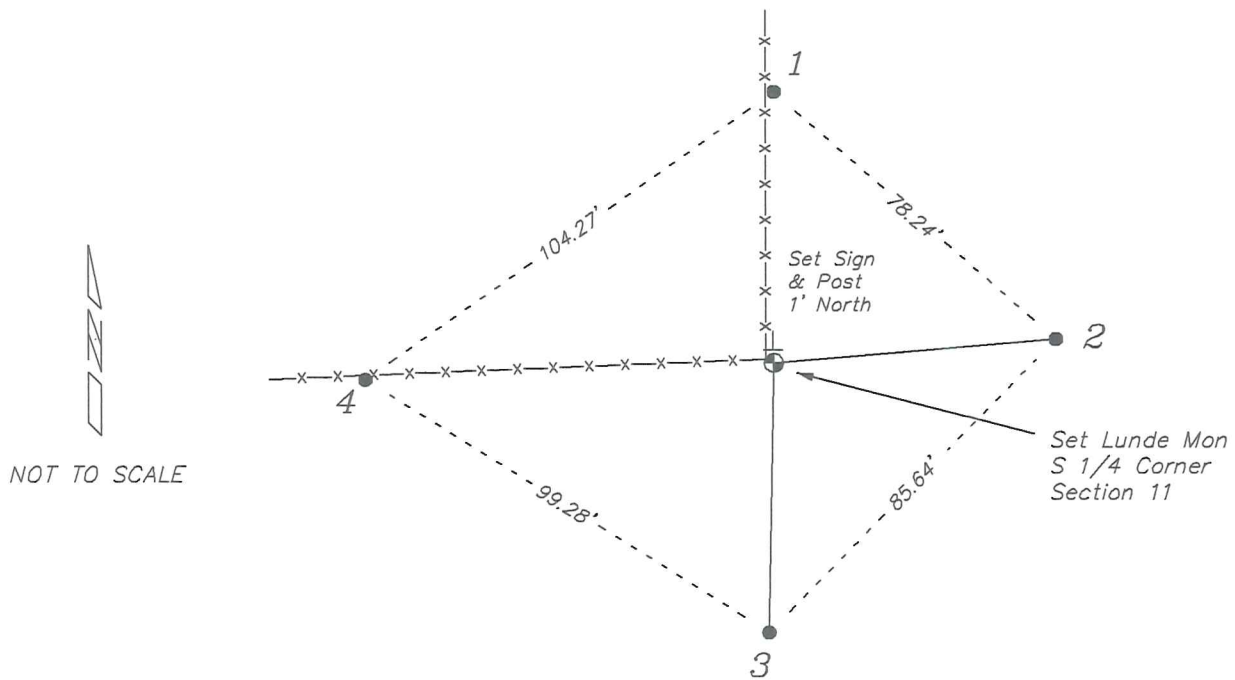
Describe or show any material discrepancy between the location of the restored corner and that of the corner previously restored or re-established.

John E Davidson established this corner in December 1852.

Richard Blakeslee was at this corner, in March 2003, during a survey in Section 14. He shows he set a 1 1/4" iron bar and prepared a tie sheet.

RECORD OF DURABLE WITNESS MONUMENTS

NO	DESCRIPTION	BEARING	DISTANCE
1	Set 3/4" x 18" Iron Rod In Fence Line	N 00°05'39" E	56.84'
2	Set 3/4" x 18" Iron Rod In Fence Line	N 85°11'11" E	58.85'
3	Set 3/4" x 18" Iron Rod In Field - 16" Below Surface	S 01°02'13" W	56.50'
4	Set 3/4" x 18" Iron Rod In Field - 16" Below Surface	S 87°39'32" W	85.03'



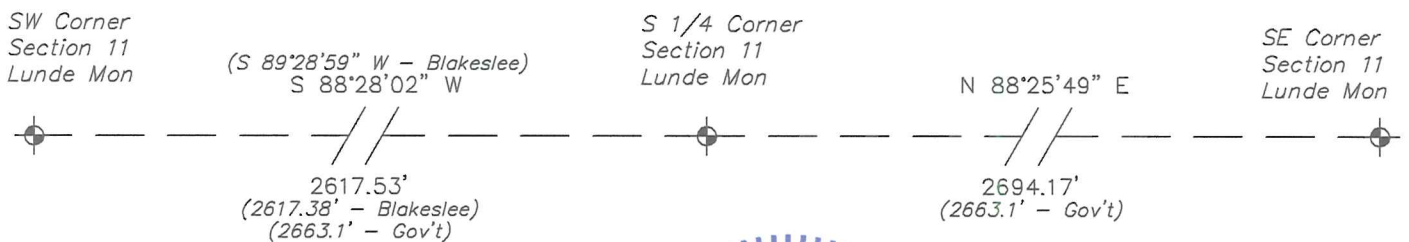
PLAN VIEW DRAWING OF REFERENCE TIES

Map Showing Distance And Direction To Other Public Land Survey
Corners Used For Re-Establishing The Corner

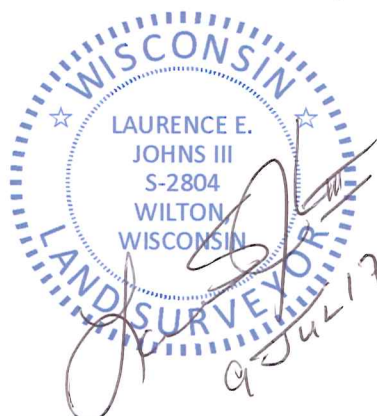
Note:

Measurements were not made to this corner at this time.

Bearings and distances shown are based on recorded information and shown for reference.



I, Laurence E Johns III PLS 2804, Professional Land Surveyor, hereby certify that the corner location shown on this record was determined by me or under my direction and control, and that this U.S. Public Land Survey Monument Record is correct and complete to the best of my knowledge and belief.



VERNON COUNTY CERTIFIED U.S. PUBLIC LAND SURVEY MONUMENT RECORD

INSTRUCTIONS: THIS RECORD SHALL SHOW THE LOCATION OF THE CORNER AND SHALL INCLUDE ALL OF THE FOLLOWING ELEMENTS (A-I)

(A) IDENTIFY THE CORNER BY REFERENCE TO THE U.S. PUBLIC LAND SURVEY SYSTEM
N $\frac{1}{2}$ corner of Section 14, T14N, R1E

■ = CORNER MONUMENT RESTORED
set 1 $\frac{1}{4}$ " x 24" Re-Bar

WITNESSES TO CORNER LOCATION:

- 1) Richard Blakeslee
- 2)
- 3) Josh Murphy

STATE PLANE COORDINATES (WISCONSIN SOUTH ZONE)

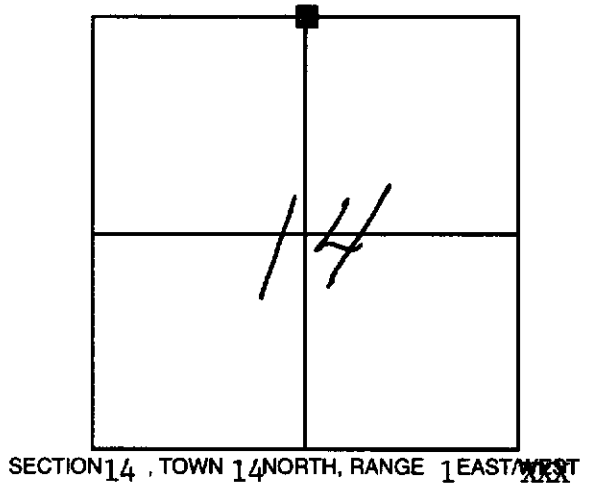
NORTHING:

EASTING:

VERNON COUNTY COORDINATES

NORTHING:

EASTING:

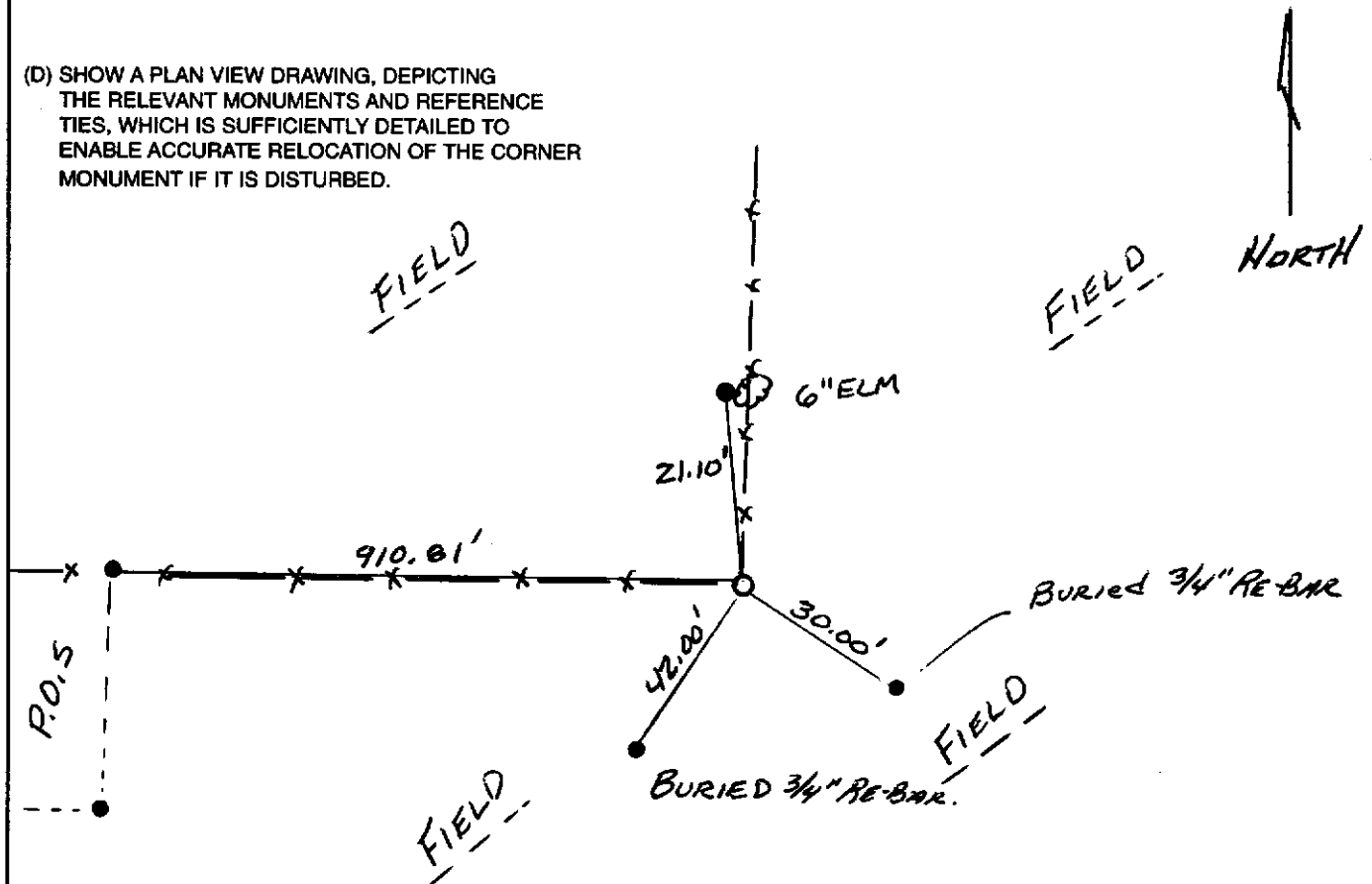


(B) DESCRIBE ANY RECORD EVIDENCE, MONUMENT EVIDENCE, OCCUPATIONAL EVIDENCE, TESTIMONIAL EVIDENCE OR ANY OTHER MATERIAL EVIDENCE YOU CONSIDERED, AND WHETHER THE MONUMENT WAS FOUND OR PLACED.

Researched all Vernon County survey records. We could not find any record of this corner being used or surveys of record in Section 14 or Section 11 to the North. Local land owners stated that occupied fence corner had been accepted corner location for many years. we traversed the North line of Section 5 and found that the forty line fences fit well with this location. We monumented the occupied fence corner as the best evidence of this corners original position.

(C) IN THE PLAN VIEW DRAWING BELOW, PROVIDE REFERENCE TIES TO AT LEAST 4 WITNESS MONUMENTS OR, IF THE LOCATION IS WITHIN A MUNICIPALITY, TO AT LEAST 2 WITNESS MONUMENTS. (WITNESS MONUMENTS SHALL BE MADE OF CONCRETE, NATURAL STONE, IRON, OR OTHER EQUALLY DURABLE MATERIAL.) DESCRIBE WITNESS MONUMENTS.

(D) SHOW A PLAN VIEW DRAWING, DEPICTING THE RELEVANT MONUMENTS AND REFERENCE TIES, WHICH IS SUFFICIENTLY DETAILED TO ENABLE ACCURATE RELOCATION OF THE CORNER MONUMENT IF IT IS DISTURBED.



Note: all ties to trees made to 8" spike. WITH 3/4" RE-BAR AT BASE. Gov't Land Corner sign on fence post facing corner.

(E) DESCRIBE ANY MATERIAL DISCREPANCY BETWEEN THE LOCATION OF THE CORNER AS RESTORED OR REESTABLISHED AND THE LOCATION OF THAT CORNER AS PREVIOUSLY RESTORED OR REESTABLISHED BY DISTANCE AND DIRECTION. SHOW THE DISCREPANCY ON THE PLAN VIEW DRAWING UNDER (D), ABOVE. SHOW THE DISTANCES BETWEEN THE CORNER AS PREVIOUSLY RESTORED OR REESTABLISHED AND (1) THE CORNER AS RESTORED OR REESTABLISHED, AND (2) TO AT LEAST 2 OF THE WITNESS MONUMENTS AS SHOWN ON THE DRAWING IN (D), ABOVE.

none

(F) WAS THE CORNER RESTORED THROUGH ACCEPTANCE OF (1) AN OBLITERATED EVIDENCE LOCATION, OR (2) A FOUND PERPETUATED LOCATION?

occupied location

(G & H) WAS THE CORNER REESTABLISHED THROUGH LOST CORNER PROPORTIONATE METHODS? IF SO SHOW THE METHOD, INCLUDING THE DIRECTION AND DISTANCES TO OTHER PUBLIC LAND SURVEY CORNERS USED AS EVIDENCE OR USED FOR PROPORTIONING IN DETERMINING THE CORNER LOCATION.

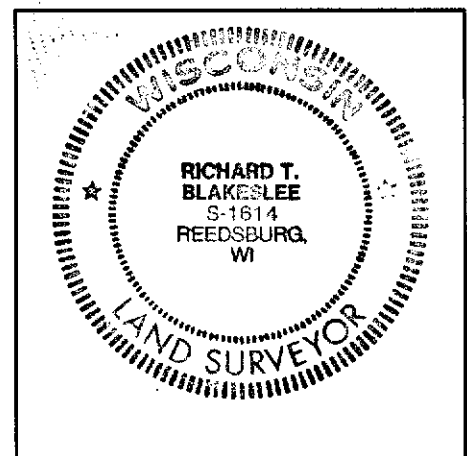
no

AFFIX LAND SURVEYOR SEAL

(I) I, Richard Blakeslee CERTIFY THAT THE LOCATION SHOWN ON THIS RECORD WAS DETERMINED BY ME OR UNDER MY DIRECTION AND CONTROL AND THAT THIS U.S. PUBLIC LAND SURVEY MONUMENT RECORD IS CORRECT AND COMPLETE TO THE BEST OF MY KNOWLEDGE AND BELIEF.

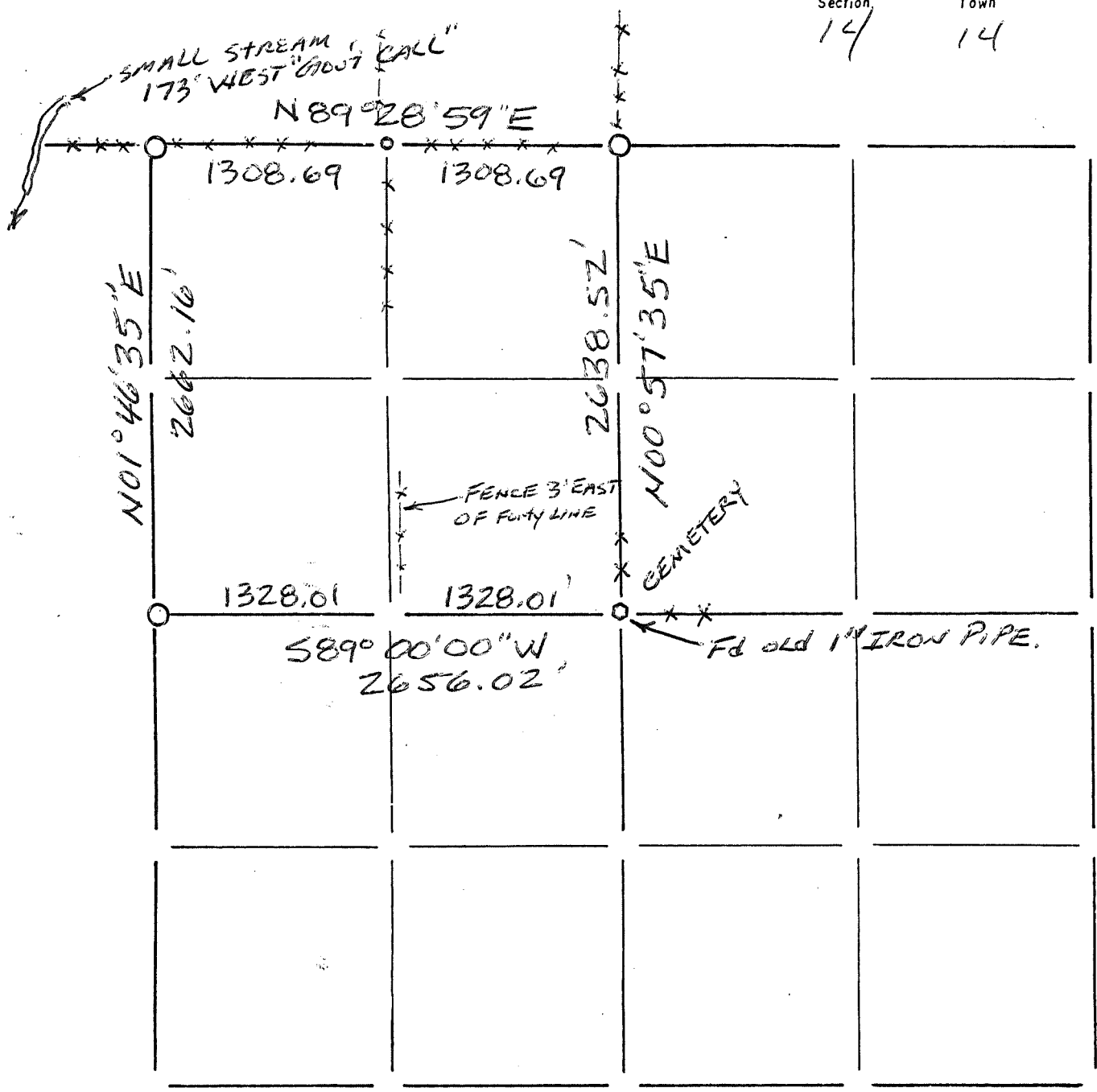

SIGNATURE DATE 03-20-03

REVISED 4-14-03 R.T.B.



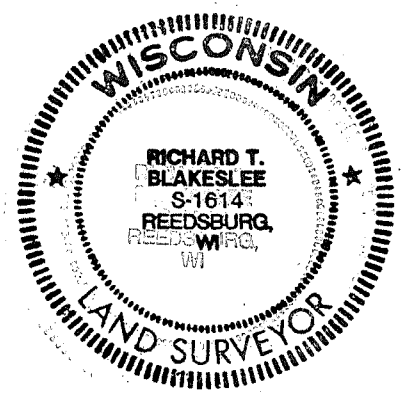
Section Summary and Index

Section 14 - 14 - 1E
 14 14 1E



LEGEND

- ⊕ - Harrison cast iron monument.
- - Stone or concrete monument.
- - Other 1/4" RE-BAR SET
- set 3/4" RE-BAR
- 1" IRON PIPE FD.



Richard T. Blakeslee
 3-21-03

70