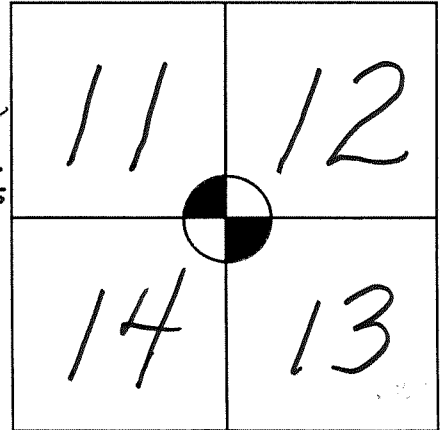


**VERNON COUNTY  
CERTIFIED U.S. PUBLIC LAND SURVEY MONUMENT RECORD**

INSTRUCTIONS: THIS RECORD SHALL SHOW THE LOCATION OF THE CORNER AND SHALL INCLUDE ALL OF THE FOLLOWING ELEMENTS (A-I)

**TOWN OF HILLSBORO  
R 1 E**

**BRASS VERNON COUNTY,  
LUNDE MONUMENT FOUND 0.5' BELOW  
PAVEMENT @ SECTION CORNER.**



(A) IDENTIFY THE CORNER BY REFERENCE TO THE U.S. PUBLIC LAND SURVEY SYSTEM

**@ NORTHERLY TERMINUS OF FARRA ROAD CENTERLINE.**

WITNESSES TO CORNER LOCATION:

- 1)
- 2)
- 3)

STATE PLANE COORDINATES (WISCONSIN SOUTH ZONE)

NORTHING:  
EASTING:

**WISCONSIN NAD83(2011)**

VERNON COUNTY COORDINATES  
NORTHING:  
EASTING:

**N 201,285.94  
E 849,311.71**

**COORDINATES SHOWN COMPLY WITH "SURVEY GRADE" SPEC. PER WIS. CSA.**

(B) DESCRIBE ANY RECORD EVIDENCE, MONUMENT EVIDENCE, OCCUPATIONAL EVIDENCE, TESTIMONIAL EVIDENCE OR ANY OTHER MATERIAL EVIDENCE YOU CONSIDERED, AND WHETHER THE MONUMENT WAS FOUND OR PLACED.

**ACCEPTED CORNER PER TIE SHEET SET FORTH BY CARL SANDNES DATED 12/22/98. I UPDATED COORDINATES AND TIES. ACCEPTED AS WELL WAS ORIGINAL TIE SHEET BY CURTIS CROOK DATED 12/1/97.**

(C) IN THE PLAN VIEW DRAWING BELOW, PROVIDE REFERENCE TIES TO AT LEAST 4 WITNESS MONUMENTS OR, IF THE LOCATION IS WITHIN A MUNICIPALITY, TO AT LEAST 2 WITNESS MONUMENTS. (WITNESS MONUMENTS SHALL BE MADE OF CONCRETE, NATURAL STONE, IRON, OR OTHER EQUALLY DURABLE MATERIAL.) DESCRIBE WITNESS MONUMENTS.

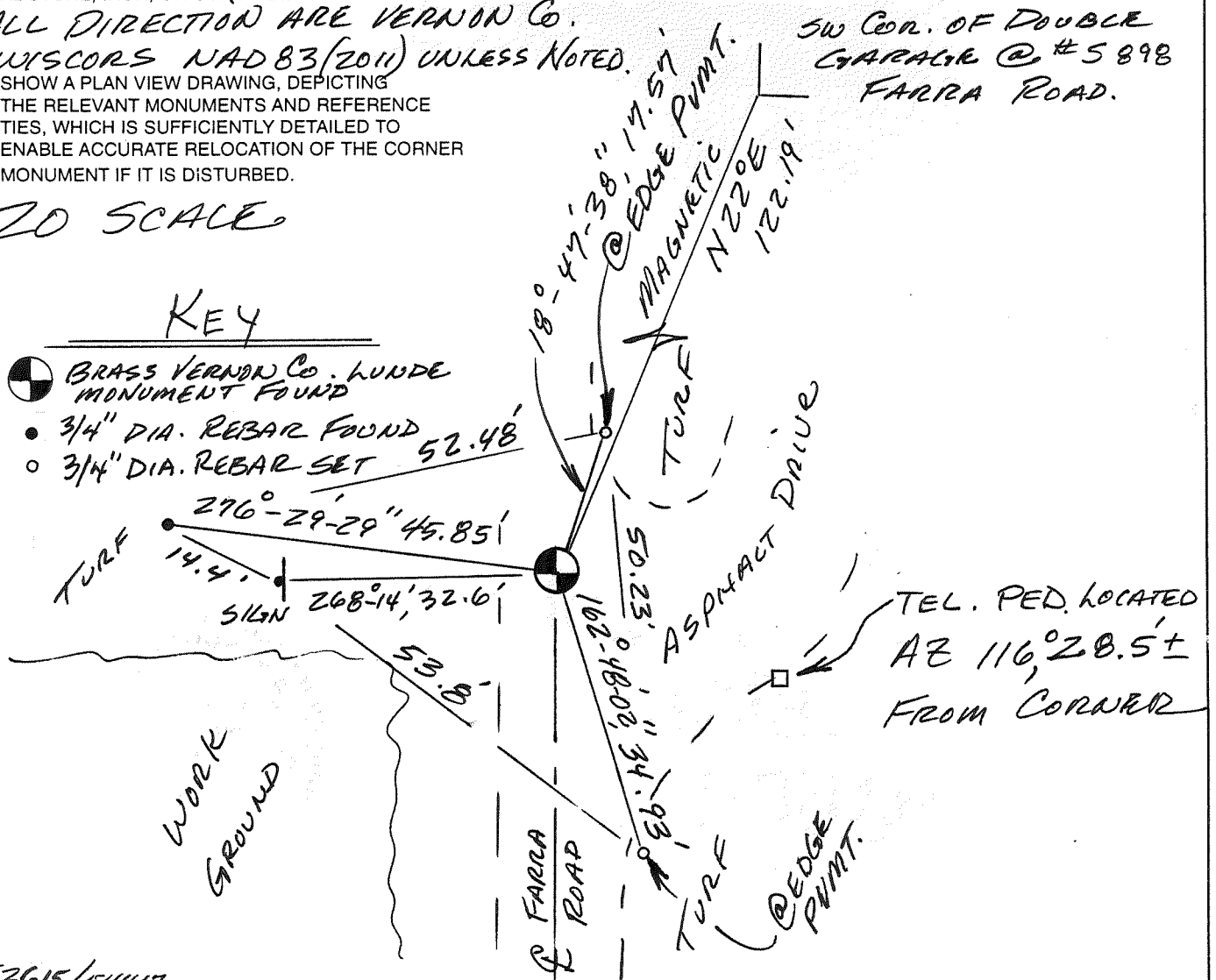
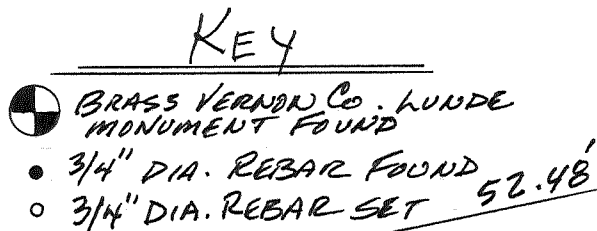
**ALL DIRECTION ARE VERNON CO.**

**WISCONSIN NAD83(2011) UNLESS NOTED.**

**SW COR. OF DOUBLE GARAGE @ #5898 FARRA ROAD.**

(D) SHOW A PLAN VIEW DRAWING, DEPICTING THE RELEVANT MONUMENTS AND REFERENCE TIES, WHICH IS SUFFICIENTLY DETAILED TO ENABLE ACCURATE RELOCATION OF THE CORNER MONUMENT IF IT IS DISTURBED.

**20 SCALE**



53615/54417

(E) DESCRIBE ANY MATERIAL DISCREPANCY BETWEEN THE LOCATION OF THE CORNER AS RESTORED OR REESTABLISHED AND THE LOCATION OF THAT CORNER AS PREVIOUSLY RESTORED OR REESTABLISHED BY DISTANCE AND DIRECTION. SHOW THE DISCREPANCY ON THE PLAN VIEW DRAWING UNDER (D), ABOVE. SHOW THE DISTANCES BETWEEN THE CORNER AS PREVIOUSLY RESTORED OR REESTABLISHED AND (1) THE CORNER AS RESTORED OR REESTABLISHED, AND (2) TO AT LEAST 2 OF THE WITNESS MONUMENTS AS SHOWN ON THE DRAWING IN (D), ABOVE.

*NONE.*

(F) WAS THE CORNER RESTORED THROUGH ACCEPTANCE OF (1) AN OBLITERATED EVIDENCE LOCATION, OR (2) A FOUND PERPETUATED LOCATION?

*(2)*

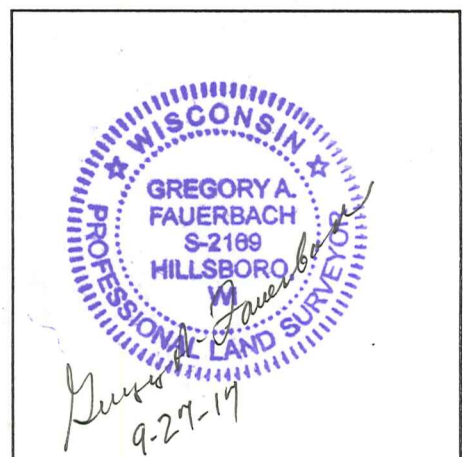
(G & H) WAS THE CORNER REESTABLISHED THROUGH LOST CORNER PROPORTIONATE METHODS? IF SO SHOW THE METHOD, INCLUDING THE DIRECTION AND DISTANCES TO OTHER PUBLIC LAND SURVEY CORNERS USED AS EVIDENCE OR USED FOR PROPORTIONING IN DETERMINING THE CORNER LOCATION.

*No.*

(I) I, *Greg Faerbach* CERTIFY THAT THE LOCATION SHOWN ON THIS RECORD WAS DETERMINED BY ME OR UNDER MY DIRECTION AND CONTROL AND THAT THIS U.S. PUBLIC LAND SURVEY MONUMENT RECORD IS CORRECT AND COMPLETE TO THE BEST OF MY KNOWLEDGE AND BELIEF.

*Greg Faerbach* *9-27-17*  
SIGNATURE DATE

AFFIX LAND SURVEYOR SEAL



*53615/54417*

**FOR VERNON COUNTY, WISCONSIN**

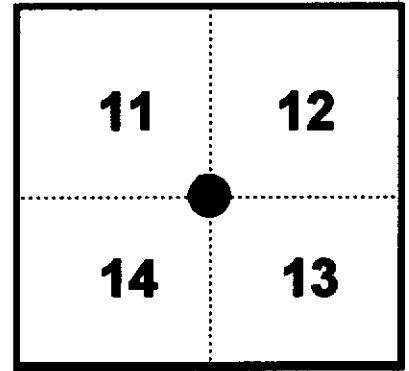
Note: This form is intended and designed to fulfill all requirements of Wisconsin Administrative Code, Chapter AE-7.08, U.S. Public Land Survey Monument Record (3)(a)(b)(c)(d)(e)(f)(g)(h)(i). Use additional sheets if necessary.

(a) The Section corner common to Sections 11,12,13,14

Township(s) 14 North, Range(s) 1 East.

Vernon County Coordinates: N 201286.007

Datum: \_\_\_\_\_ E 849311.936



(b)(f)(h) Description of monument found at this corner and if it was accepted, state all evidence (material, testimonial, occupational, plats records, other monuments) used as a basis for accepting. If not accepted or nothing was found, state evidence used as basis for establishing location and what was set. If re-established through lost corner proportionate methods, indicate all monuments, distances and directions used.

1845 - ~~J. E. Davidson~~ established original corner 79.72 chains from range line (equal distant).

- Several surveys by James J. Carol referred to a 1" iron pipe with Vernon County Monument.

12-15-97 - F. Curtis Crook found and accepted location of the 1" iron pipe and replaced it with a Vernon County Monument.

11-5-1998 - I found Vernon County Monument with reference monuments as per F. Curtis Crook tie sheet.

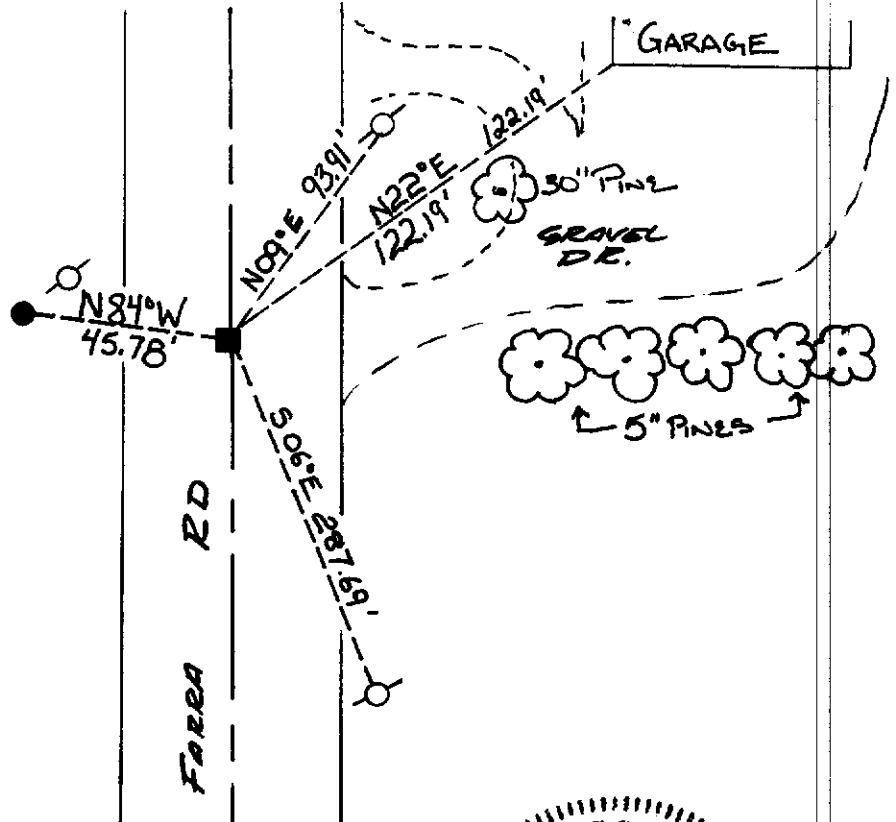
(c)(d)(e) Plan view of corner with ties to at least four (4) witness monuments. If in disagreement with previously established corner, show the distances between the two corners and also indicate ties to disputed corner.

NORTH



Not To Scale

- = Set Vernon County Monument
- = Found 3/4 inch Rebar
- = Utility Pole



(I) Certify that the corner location on this record was determined by me or under my direction and control and that this U.S. Public Land survey Monument Record is correct and complete to the best of my knowledge and belief.

*[Handwritten Signature]*  
 \_\_\_\_\_  
 Signature

12/22/98  
 \_\_\_\_\_  
 Date



Filed for record in Vernon County Surveyor's Office on \_\_\_\_\_ INDEX NO. \_\_\_\_\_

*(2) See next pg. also*

CERTIFIED LAND CORNER

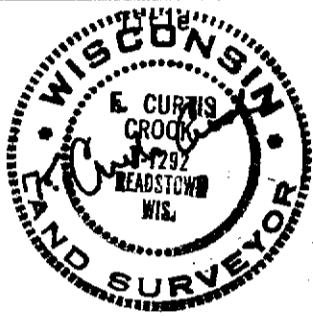
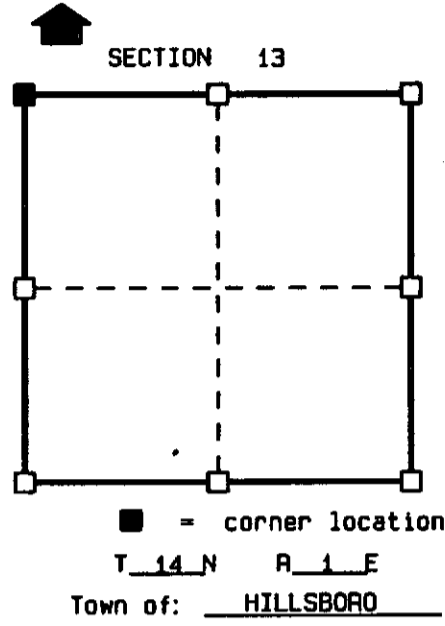
STATE OF WISCONSIN )  
 COUNTY OF VERNON ) S.S.

CERTIFICATE

I, F. CURTIS CROOK, do hereby certify that on the 28th day of OCTOBER 1997, I found (evidence) ~~(no evidence)~~ of the NW corner of SECTION 13, T 14 N, R 1 E, Fourth Principal Meridian, and I re-established said corner according to the Wisconsin Statutes as shown and described hereon.

Dated this 18th day of Dec 1997

F. CURTIS CROOK R.L.S. S-1292



Seal

History of original corner establishment:  
 ORIGINAL CORNER ESTABLISHED BY JAMES M. MARSH IN 1845.  
 SEVERAL SURVEYS BY JAMES J. CARROLL REFERRED TO A 1" IRON PIPE AT THE CORNER.

Description of corner evidence found:  
 FOUND AND ACCEPTED THE LOCATION OF THE 1" IRON PIPE MENTIONED ABOVE.  
 REPLACED SAID PIPE WITH A VERNON COUNTY MONUMENT AND MADE TIES AS SHOWN BELOW.

Description of corner and witness monuments, references and accessories used to perpetuate the original or re-established location of this corner:

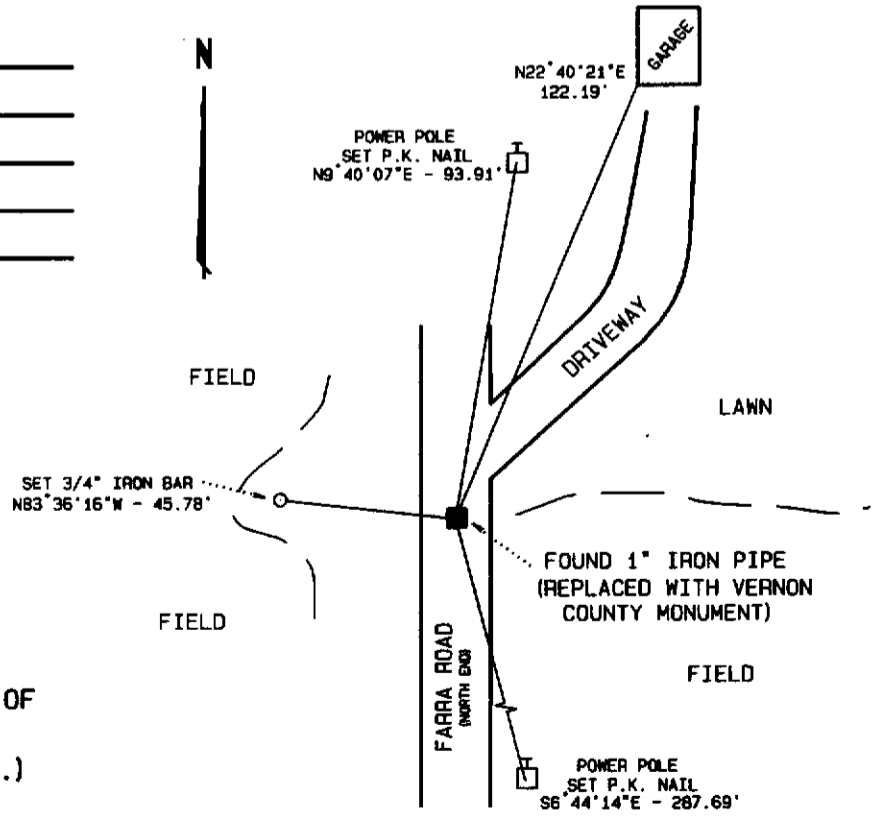
Witnesses to corner location:

CHAD CROOK

BRENT EWING

NOTES:  
 DRAWING IS NOT TO SCALE.  
 BEARINGS ARE REFERENCED TO PROJECT.  
 VERNON COUNTY MONUMENTS ARE LUNDE MONUMENTS.  
 SET SURVEY MARKER SIGN IN AREA.

Sketch:



(THIS CORNER SET AS PART OF VERNON COUNTY'S 1997 REMONUMENTATION PROJECT.)

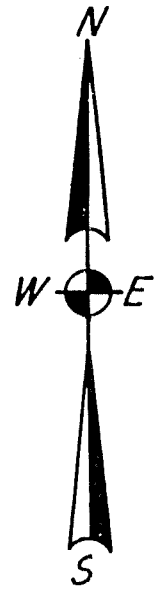
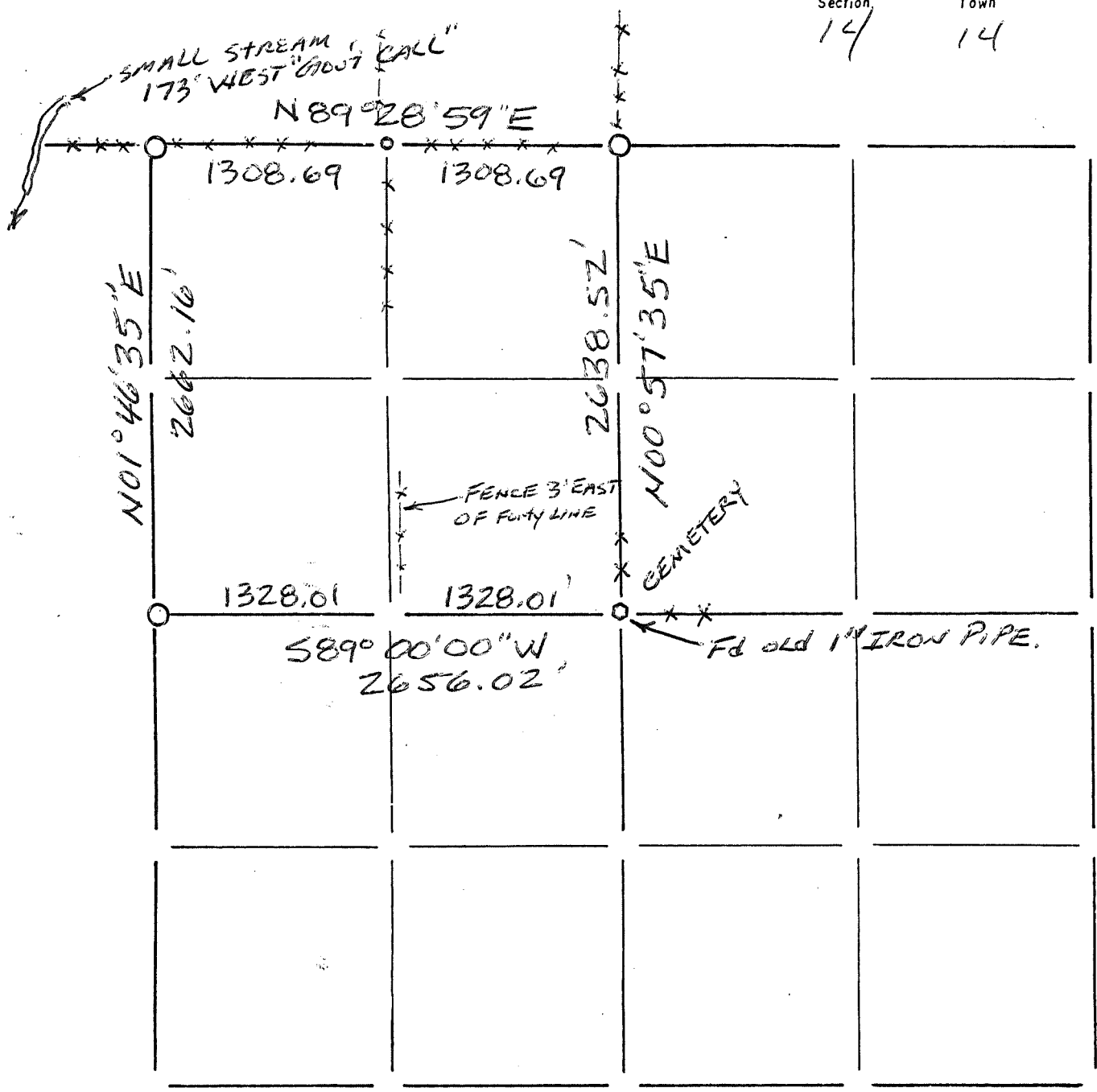
VERNON COUNTY COORDINATES

North (Y)	East (X)
201286.058	849311.900

21A

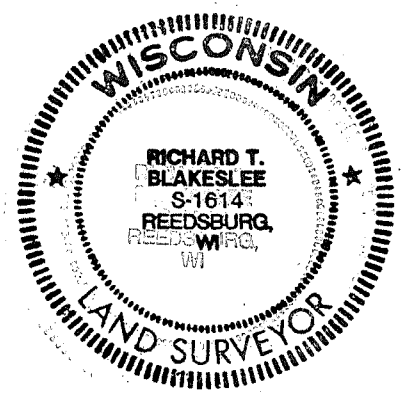
Section Summary and Index

Section 14 - 14 - 1E  
 14 14 1E



LEGEND

- ⊕ - Harrison cast iron monument.
- - Stone or concrete monument.
- - Other 1/4" RE-BAR SET
- set 3/4" RE-BAR
- 1" IRON PIPE FD.



*Richard T. Blakeslee*  
 3-21-03

70