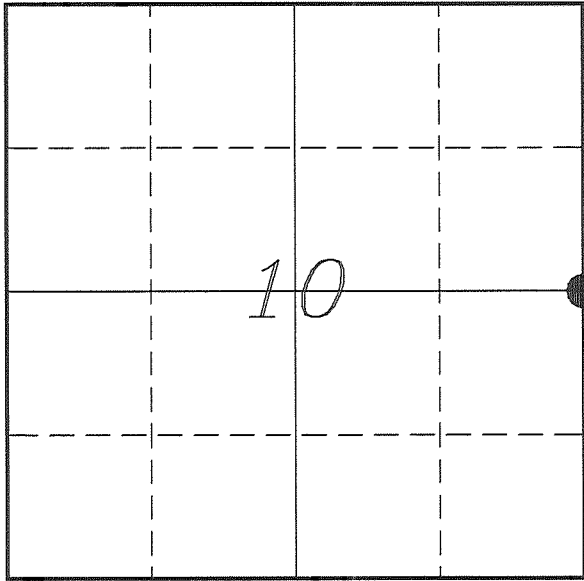


**U. S. PUBLIC LAND SURVEY MONUMENT RECORD**

**SECTION 10, T14N, R1E, TOWN OF HILLSBORO  
VERNON COUNTY, WISCONSIN**



*LOCATION OF LANDMARK*

<i>VERNON COUNTY COORDINATE SYSTEM</i>	
<i>Northing</i>	<i>203789.554</i>
<i>Easting</i>	<i>843969.900</i>
<i>Datum</i>	<i>NAD 1983 (2011)</i>
<i>Elevation</i>	
<i>Datum</i>	
<i>TYPE OF LANDMARK:</i>	
<i>Set 1 1/4" x 18" Iron Rod</i>	
<i>BEARINGS ARE REFERENCED TO:</i>	
<i>Vernon County Coordinates (Survey Grade)</i>	

*Witnesses:* Laurence E Johns III  
Larry Handschy

*Eagle Ridge Surveying*  
PO Box 213  
Wilton, Wisconsin

*Date:* 7 June 2017

*Describe any record evidence, monument evidence, testimonial evidence or any other material evidence you considered and whether the monument was found or restored through acceptance of an obliterated evidence location.*

No bearing trees of record were located.

I found no record of this corner being visited since the original government survey.

I re-established this corner on a straight lines between the NE & SE Corners and in line with the fences to the West & East.

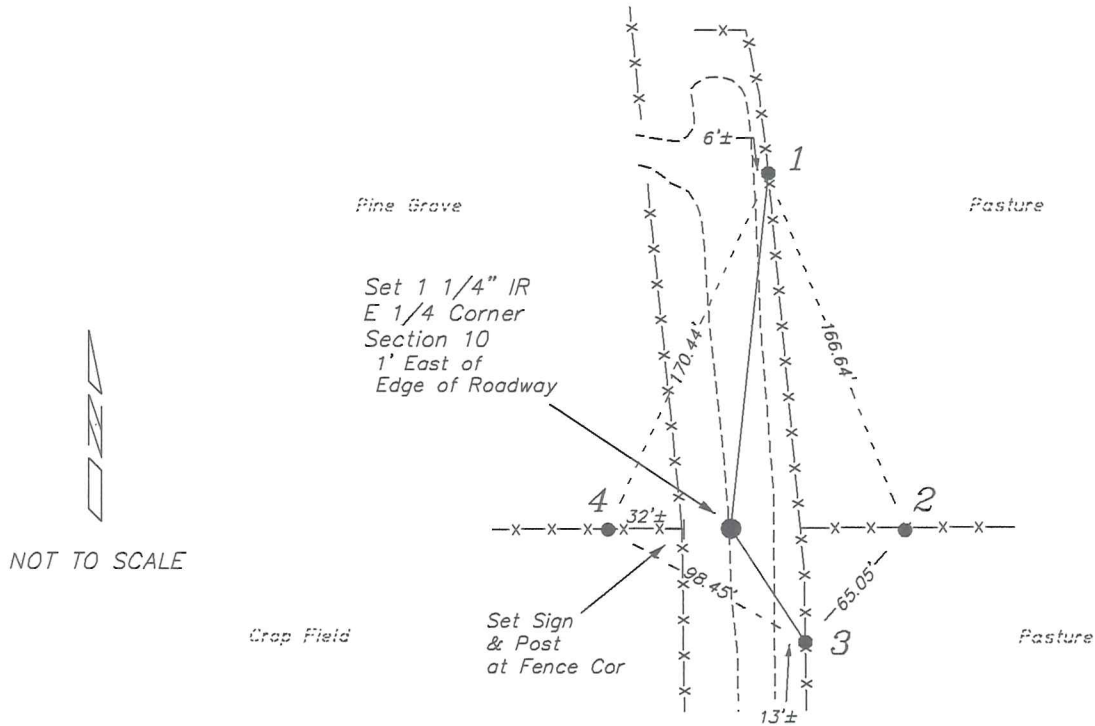
This location falls on the East edge of a gravel driveway and therefore placed an 1 1/4" iron rod instead of a Lunde Monument.

*Describe or show any material discrepancy between the location of the restored corner and that of the corner previously restored or re-established.*

John E Davidson established this corner in December 1852.

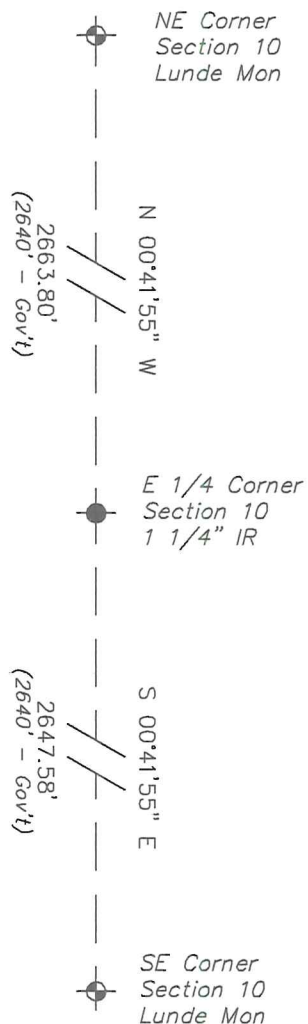
## RECORD OF DURABLE WITNESS MONUMENTS

NO	DESCRIPTION	BEARING	DISTANCE
1	Set 3/4" x 18" Iron Rod In Fence Line	N 05°56'12" E	155.95'
2	Set 3/4" x 18" Iron Rod In Fence Line	S 89°30'45" E	75.39'
3	Set 3/4" x 18" Iron Rod In Fence Line	S 33°10'16" E	58.92'
4	Set 3/4" x 18" Iron Rod In Fence Line	S 89°24'26" W	53.29'



### PLAN VIEW DRAWING OF REFERENCE TIES

Map Showing Distance And Direction To Other Public Land Survey Corners Used For Re-Establishing The Corner



I, Laurence E Johns III PLS 2804, Professional Land Surveyor, hereby certify that the corner location shown on this record was determined by me or under my direction and control, and that this U.S. Public Land Survey Monument Record is correct and complete to the best of my knowledge and belief.