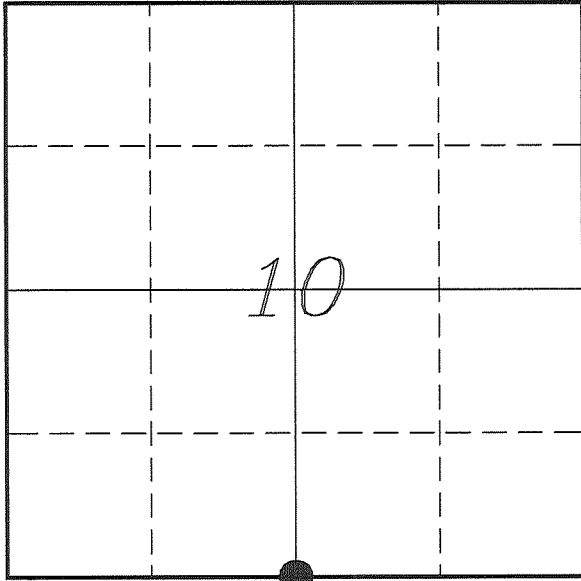


U. S. PUBLIC LAND SURVEY MONUMENT RECORD

**SECTION 10, T14N, R1E, TOWN OF HILLSBORO
VERNON COUNTY, WISCONSIN**



LOCATION OF LANDMARK

<i>VERNON COUNTY COORDINATE SYSTEM</i>	
<i>Northing</i>	<i>201028.750</i>
<i>Easting</i>	<i>841397.691</i>
<i>Datum</i>	<i>NAD 1983 (2011)</i>
<i>Elevation</i>	
<i>Datum</i>	
<i>TYPE OF LANDMARK:</i>	
<i>Set Lunde Monument</i>	
<i>4" Brass Capped</i>	
<i>Iron Pipe</i>	
<i>BEARINGS ARE REFERENCED TO:</i>	
<i>Vernon County Coordinates</i>	
<i>(Survey Grade)</i>	

Witnesses: Larry Handschy
Al Hoff

Eagle Ridge Surveying
PO Box 213
Wilton, Wisconsin

Date: 3 July 2017

Describe any record evidence, monument evidence, testimonial evidence or any other material evidence you considered and whether the monument was found or restored through acceptance of an obliterated evidence location.

No bearing trees of record were located.

I found no record of this corner being visited since the original government survey.

There is a 2-way fence corner that is approximately 20 feet East and 5 feet South of the mid-point between section corners.

This fence corner fits well with occupation to the North, West and East. It also fits occupation at the '40' corner to the East.

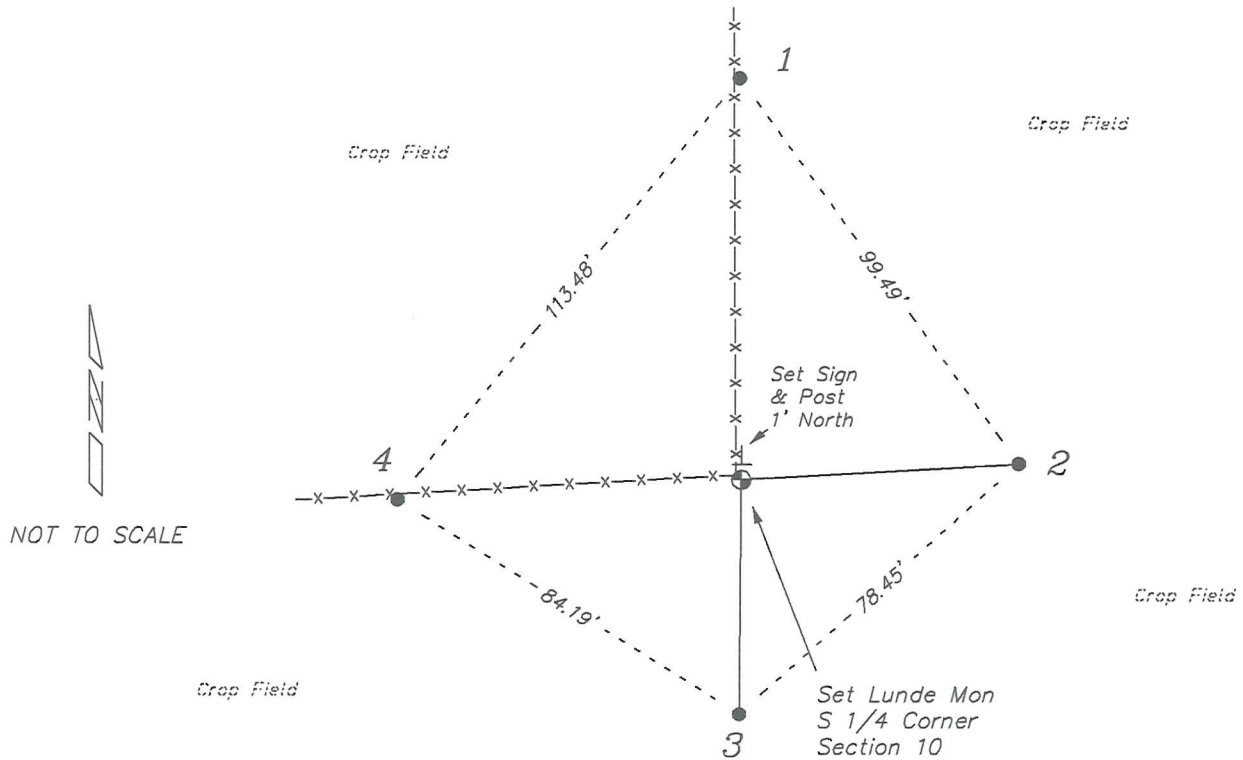
I accepted the location of this occupation as the best available evidence of the original government corner and placed a Lunde Monument at the corner.

Describe or show any material discrepancy between the location of the restored corner and that of the corner previously restored or re-established.

John E Davidson established this corner in December 1852.

RECORD OF DURABLE WITNESS MONUMENTS

NO	DESCRIPTION	BEARING	DISTANCE
1	Set 3/4" x 18" Iron Rod In Fence Line	N 00°15'38" W	84.25'
2	Set 3/4" x 18" Iron Rod In Field - 16" Below Surface	N 86°34'23" E	57.78'
3	Set 3/4" x 18" Iron Rod In Field - 16" Below Surface	S 00°31'04" W	49.24'
4	Set 3/4" x 18" Iron Rod In Fence Line	S 86°40'48" W	71.67'



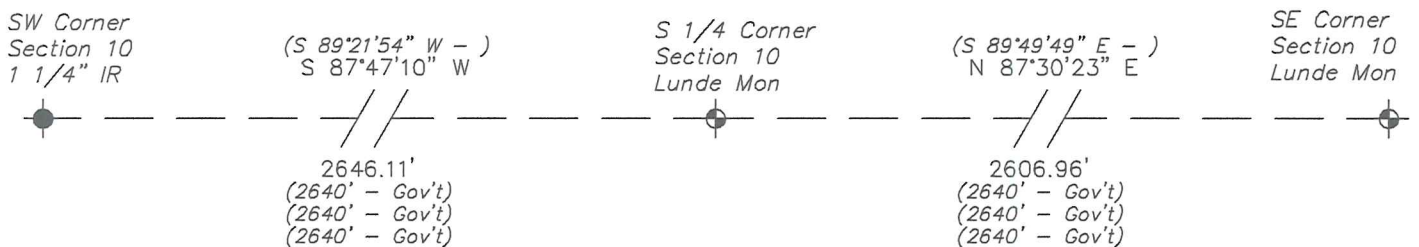
PLAN VIEW DRAWING OF REFERENCE TIES

Map Showing Distance And Direction To Other Public Land Survey Corners Used For Re-Establishing The Corner

Note:

Measurements were not made to this corner at this time.

Bearings and distances shown are based on recorded information and shown for reference.



I, Laurence E Johns III PLS 2804, Professional Land Surveyor, hereby certify that the corner location shown on this record was determined by me or under my direction and control, and that this U.S. Public Land Survey Monument Record is correct and complete to the best of my knowledge and belief.

