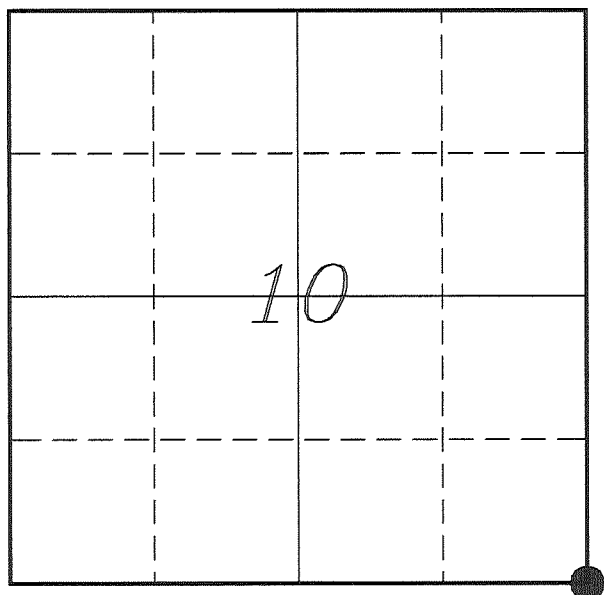


U. S. PUBLIC LAND SURVEY MONUMENT RECORD

**SECTION 10, T14N, R1E, TOWN OF HILLSBORO
VERNON COUNTY, WISCONSIN**



LOCATION OF LANDMARK

Witnesses: Larry Handschy

Date: 12 April 2017

<i>VERNON COUNTY COORDINATE SYSTEM</i>	
<i>Northing</i>	<i>201142.175</i>
<i>Easting</i>	<i>844002.183</i>
<i>Datum</i>	<i>NAD 1983 (2011)</i>
<i>Elevation</i>	
<i>Datum</i>	
<i>TYPE OF LANDMARK:</i>	
<i>Set Lunde Monument</i>	
<i>4" Brass Capped</i>	
<i>Iron Pipe</i>	
<i>BEARINGS ARE REFERENCED TO:</i>	
<i>Vernon County Coordinates</i>	
<i>(Survey Grade)</i>	

Eagle Ridge Surveying
PO Box 213
Wilton, Wisconsin

Describe any record evidence, monument evidence, testimonial evidence or any other material evidence you considered and whether the monument was found or restored through acceptance of an obliterated evidence location.

No bearing trees of record were located.

Found the 1 1/4" iron bar set by Blakeslee. His tie sheet states he set this corner on the fence line at a distance of 173' from the center of the creek as shown on the original government notes.

I have found no evidence to dispute the location of this corner, though the distance to the center of the creek is now 165'.

Accepted the location of the iron bar as the best available evidence of the original government corner and replaced it with a Lunde Monument.

Describe or show any material discrepancy between the location of the restored corner and that of the corner previously restored or re-established.

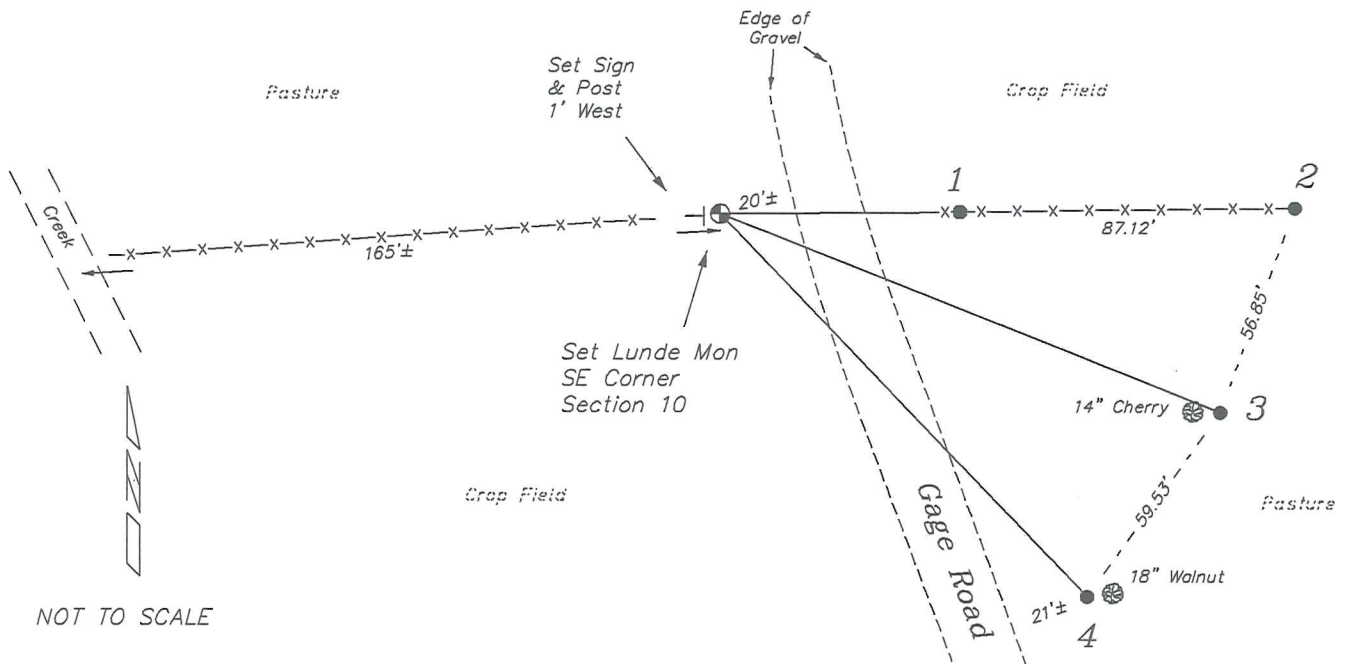
John E Davidson established this corner in December 1852.

Richard Blakeslee was at this corner, March 2003, during a survey in Section 14. He shows he set a 1 1/4" iron bar and prepared a tie sheet.

Gregory Fauerbach was at this corner, in July 2009, during a survey in Section 15. He shows he found a 1 1/4" rebar.

RECORD OF DURABLE WITNESS MONUMENTS

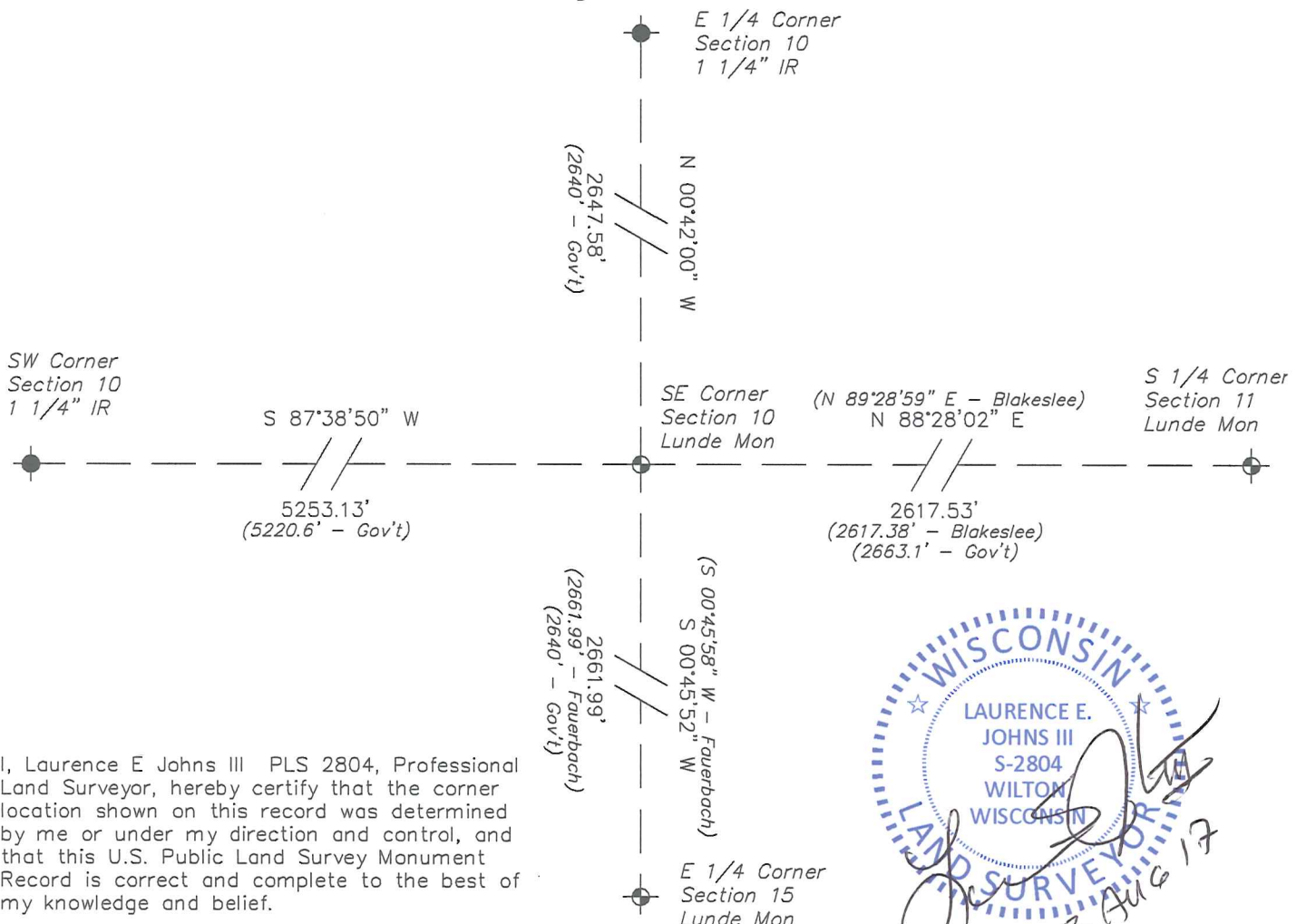
NO	DESCRIPTION	BEARING	DISTANCE
1	Set 3/4" x 18" Iron Rod In Fence Line	N 89°29'22" E	62.26'
2	Set 3/4" x 18" Iron Rod In Fence Line	N 89°23'15" E	149.38'
3	Set 3/4" x 18" Iron Rod 2' East of a 14" Cherry	S 68°15'22" E	139.94'
4	Set 3/4" x 18" Iron Rod 2' West of a 18" Walnut	S 43°34'25" E	138.49'



NOT TO SCALE

PLAN VIEW DRAWING OF REFERENCE TIES

Map Showing Distance And Direction To Other Public Land Survey Corners Used For Re-Establishing The Corner



I, Laurence E Johns III PLS 2804, Professional Land Surveyor, hereby certify that the corner location shown on this record was determined by me or under my direction and control, and that this U.S. Public Land Survey Monument Record is correct and complete to the best of my knowledge and belief.

VERNON COUNTY CERTIFIED U.S. PUBLIC LAND SURVEY MONUMENT RECORD

INSTRUCTIONS: THIS RECORD SHALL SHOW THE LOCATION OF THE CORNER AND SHALL INCLUDE ALL OF THE FOLLOWING ELEMENTS (A-I)

(A) IDENTIFY THE CORNER BY REFERENCE TO THE U.S. PUBLIC LAND SURVEY SYSTEM

Northwest corner of Section 14, T14N, R1E.

■ = CORNER MONUMENT RESTORED

1 1/4" x 24" Re-Bar set

WITNESSES TO CORNER LOCATION:

- 1) Richard Blakeslee
- 2) Josh Murphy
- 3)

STATE PLANE COORDINATES (WISCONSIN SOUTH ZONE)

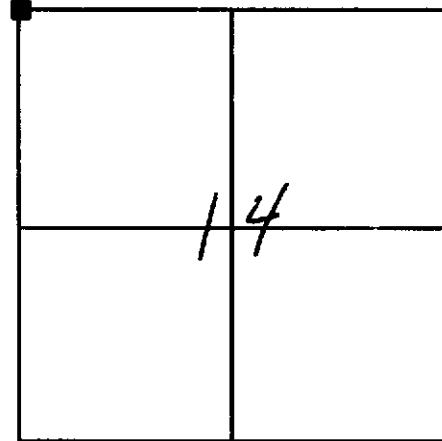
NORTHING:

EASTING:

VERNON COUNTY COORDINATES

NORTHING:

EASTING:



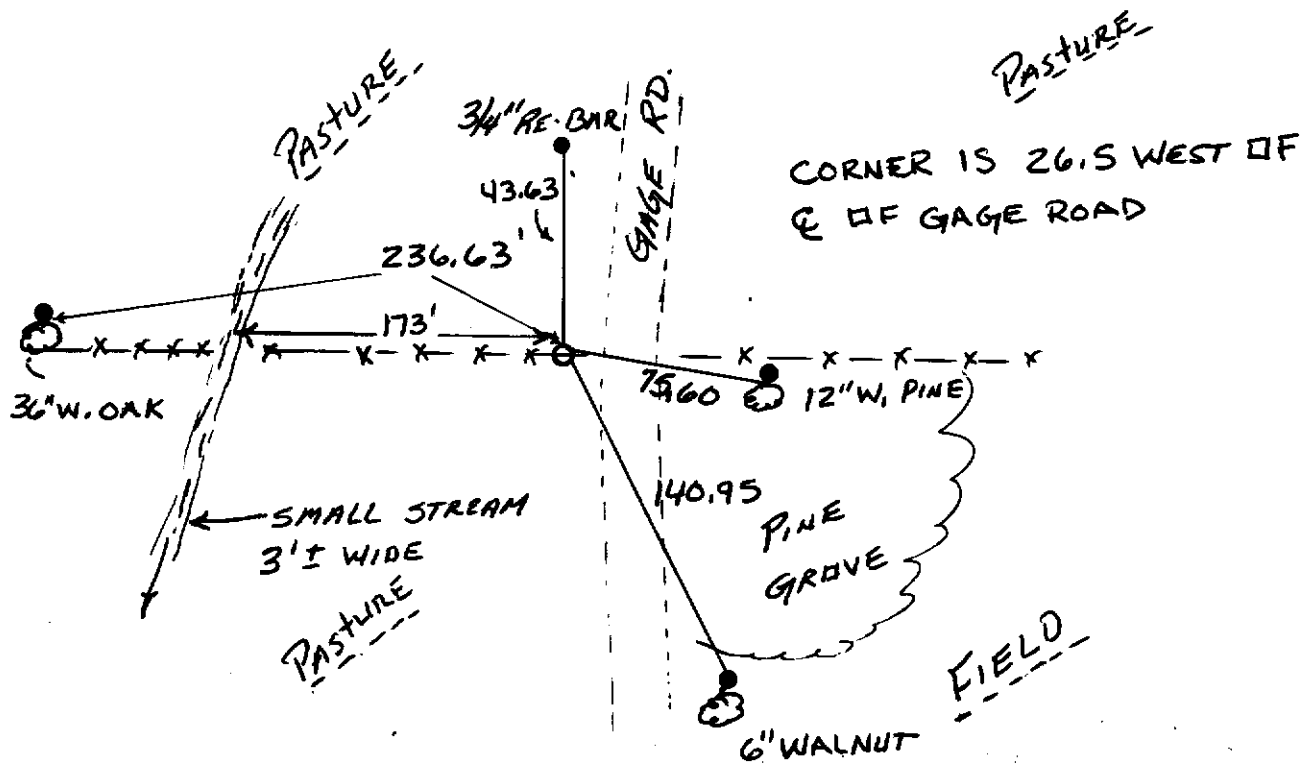
SECTION 14, TOWN 14 NORTH, RANGE 1 EAST, ~~WEST~~

(B) DESCRIBE ANY RECORD EVIDENCE, MONUMENT EVIDENCE, OCCUPATIONAL EVIDENCE, TESTIMONIAL EVIDENCE OR ANY OTHER MATERIAL EVIDENCE YOU CONSIDERED, AND WHETHER THE MONUMENT WAS FOUND OR PLACED.

Researched all Vernon County survey records regarding this corner. Could not find and records regarding this corner other than the Gov't notes. Call in Gov't notes for a small stream being West, 173 feet was used to position this corner along the occupied East-West fence line. This location fits well with other occupied fence corners east of this location.

(C) IN THE PLAN VIEW DRAWING BELOW, PROVIDE REFERENCE TIES TO AT LEAST 4 WITNESS MONUMENTS OR, IF THE LOCATION IS WITHIN A MUNICIPALITY, TO AT LEAST 2 WITNESS MONUMENTS. (WITNESS MONUMENTS SHALL BE MADE OF CONCRETE, NATURAL STONE, IRON, OR OTHER EQUALLY DURABLE MATERIAL.) DESCRIBE WITNESS MONUMENTS.

(D) SHOW A PLAN VIEW DRAWING, DEPICTING THE RELEVANT MONUMENTS AND REFERENCE TIES, WHICH IS SUFFICIENTLY DETAILED TO ENABLE ACCURATE RELOCATION OF THE CORNER MONUMENT IF IT IS DISTURBED.



Note: all ties to trees made with 8" spikes. WITH 3/4" RE-BAR AT BASE

Gov't Land corner sign on fence post facing corner.

(E) DESCRIBE ANY MATERIAL DISCREPANCY BETWEEN THE LOCATION OF THE CORNER AS RESTORED OR REESTABLISHED AND THE LOCATION OF THAT CORNER AS PREVIOUSLY RESTORED OR REESTABLISHED BY DISTANCE AND DIRECTION. SHOW THE DISCREPANCY ON THE PLAN VIEW DRAWING UNDER (D), ABOVE. SHOW THE DISTANCES BETWEEN THE CORNER AS PREVIOUSLY RESTORED OR REESTABLISHED AND (1) THE CORNER AS RESTORED OR REESTABLISHED, AND (2) TO AT LEAST 2 OF THE WITNESS MONUMENTS AS SHOWN ON THE DRAWING IN (D), ABOVE.

none

(F) WAS THE CORNER RESTORED THROUGH ACCEPTANCE OF (1) AN OBLITERATED EVIDENCE LOCATION, OR (2) A FOUND PERPETUATED LOCATION?

no

(G & H) WAS THE CORNER REESTABLISHED THROUGH LOST CORNER PROPORTIONATE METHODS? IF SO SHOW THE METHOD, INCLUDING THE DIRECTION AND DISTANCES TO OTHER PUBLIC LAND SURVEY CORNERS USED AS EVIDENCE OR USED FOR PROPORTIONING IN DETERMINING THE CORNER LOCATION.

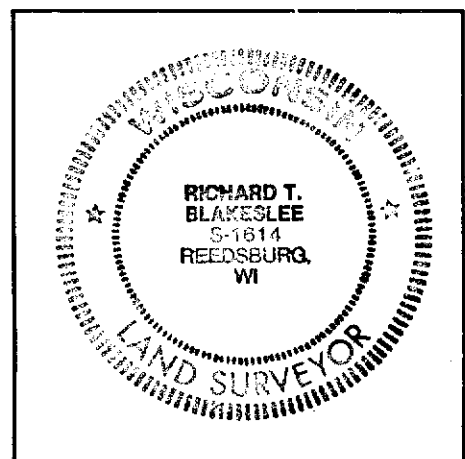
no

AFFIX LAND SURVEYOR SEAL

(I) I, Richard Blakeslee CERTIFY THAT THE LOCATION SHOWN ON THIS RECORD WAS DETERMINED BY ME OR UNDER MY DIRECTION AND CONTROL AND THAT THIS U.S. PUBLIC LAND SURVEY MONUMENT RECORD IS CORRECT AND COMPLETE TO THE BEST OF MY KNOWLEDGE AND BELIEF.

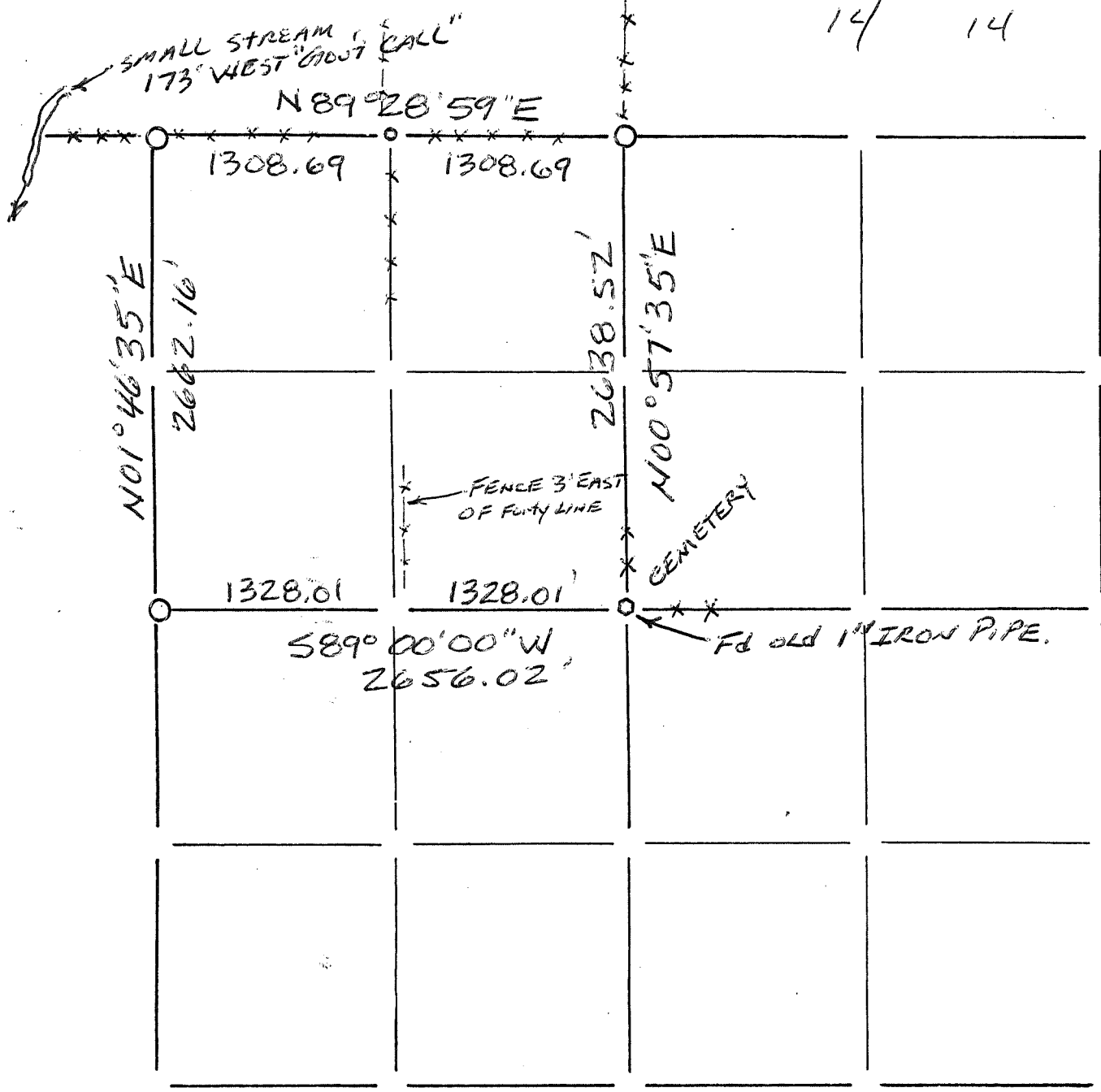
Richard T. Blakeslee 03-20-03
SIGNATURE DATE

REVISED 4-14-03 R.T.B.



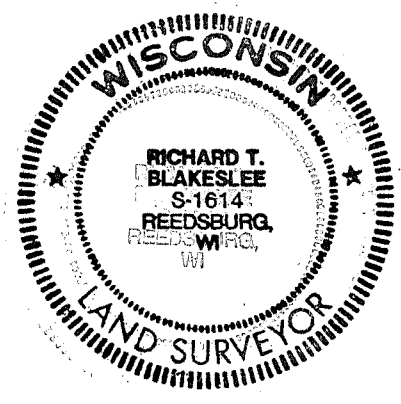
Section Summary and Index

Section 14 - 14 - 1E
 14 14 1E



LEGEND

- ⊕ - Harrison cast iron monument.
- - Stone or concrete monument.
- - Other 1/4" RE-BAR SET
- set 3/4" RE-BAR
- 1" IRON PIPE FD.



Richard T. Blakeslee
 3-21-03

70