

JAN 21 2002

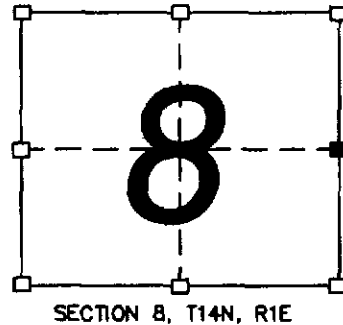
# VERNON COUNTY CERTIFIED U.S. PUBLIC LAND SURVEY MONUMENT RECORD

INSTRUCTIONS: THIS RECORD SHALL SHOW THE LOCATION OF THE CORNER AND SHALL INCLUDE ALL OF THE FOLLOWING NINE ELEMENTS (A THROUGH I)

- (A) IDENTIFY THE CORNER BY REFERENCE TO THE U.S. PUBLIC LAND SURVEY SYSTEM
- = CORNER MONUMENT RESTORED

WITNESSES TO CORNER LOCATION:  
CHRISTOPHER G. REEDY  
MICHAEL J. KAST

STATE PLANE COORDINATES (WISCONSIN SOUTH ZONE)  
NORTHING:  
EASTING:



SECTION 8, T14N, R1E

- (B) DESCRIBE ANY RECORD EVIDENCE, MONUMENT EVIDENCE, OCCUPATIONAL EVIDENCE, TESTIMONIAL EVIDENCE, OR ANY OTHER MATERIAL EVIDENCE YOU CONSIDERED, AND WHETHER THE MONUMENT WAS FOUND OR PLACED.

ALEX RISTOW FOUND THE ORIGINAL GOVERNMENT CORNER IN FEBRUARY 1907. JIM CARROLL TOLD ME HE FOUND A 2" PIPE HERE ABOUT 15 YEARS AGO. I FOUND THE PIPE THAT CARROLL FOUND AND ACCEPTED IT AS THE CORNER.

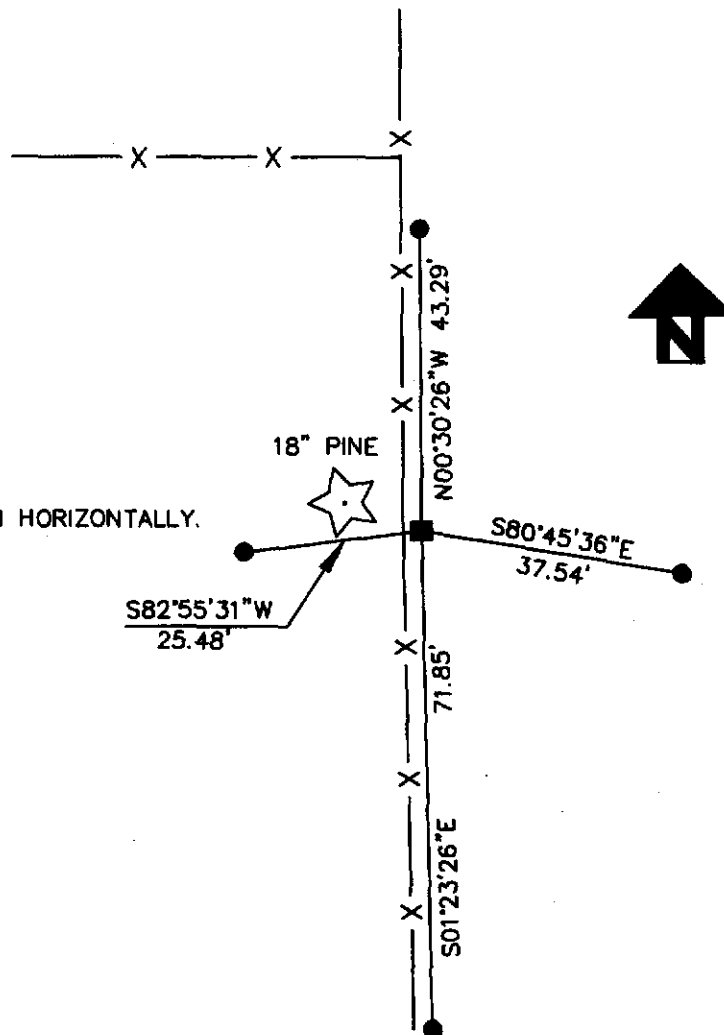
- (C) IN THE PLAN VIEW DRAWING BELOW, PROVIDE REFERENCE TIES TO AT LEAST 4 WITNESS MONUMENTS, OR, IF

- (D) SHOW A PLAN VIEW DRAWING DEPICTING THE RELEVANT MONUMENTS AND

### LEGEND

- 2" IRON PIPE FOUND
- 3/4" X 24" IRON ROD SET AS TIE

DISTANCES TO NEW TIES WERE MEASURED BY EDM HORIZONTALLY.



(E) DESCRIBE ANY MATERIAL DISCREPANCY BETWEEN THE LOCATION OF THE CORNER AS RESTORED OR REESTABLISHED AND THE LOCATION OF THAT CORNER AS PREVIOUSLY RESTORED OR REESTABLISHED BY DISTANCE AND DIRECTION. SHOW THE DISCREPANCY ON THE PLAN VIEW DRAWING UNDER (D), ABOVE. SHOW THE DISTANCES BETWEEN THE CORNER AS PREVIOUSLY RESTORED OR REESTABLISHED AND (1) THE CORNER AS RESTORED OR REESTABLISHED, AND (2) TO AT LEAST 2 OF THE WITNESS MONUMENTS SHOWN ON THE DRAWING IN (D) ABOVE.

NONE

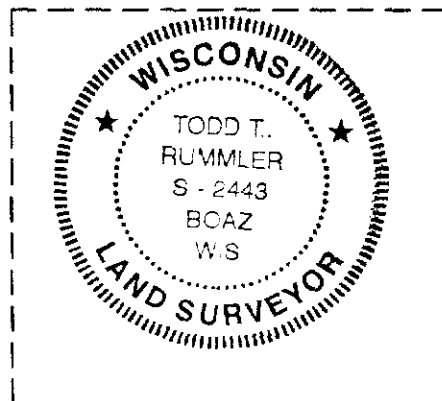
(F) WAS THE CORNER RESTORED THROUGH ACCEPTANCE OF (1) AN OBLITERATED EVIDENCE LOCATION, OR, (2) A FOUND PERPETUATED LOCATION?

(2) A FOUND PERPETUATED LOCATION

(G&H) WAS THE CORNER REESTABLISHED THROUGH LOST CORNER PROPORTIONATE METHODS? IF SO, SHOW THE METHOD, INCLUDING THE DIRECTIONS AND DISTANCES TO OTHER PUBLIC LAND SURVEY CORNERS USED AS EVIDENCE OR USED FOR PROPORTIONING IN DETERMINING THE CORNER LOCATION.

NO.

AFFIX LAND SURVEYOR SEAL



(I) I, TODD T. RUMMLER, R.L.S. - 2443  
CERTIFY THAT THE CORNER LOCATION SHOWN ON THIS RECORD WAS DETERMINED BY ME OR UNDER MY DIRECTION AND CONTROL AND THAT THIS U.S. PUBLIC LAND SURVEY MONUMENT RECORD IS CORRECT AND COMPLETE TO THE BEST OF MY KNOWLEDGE AND BELIEF.

SIGNATURE

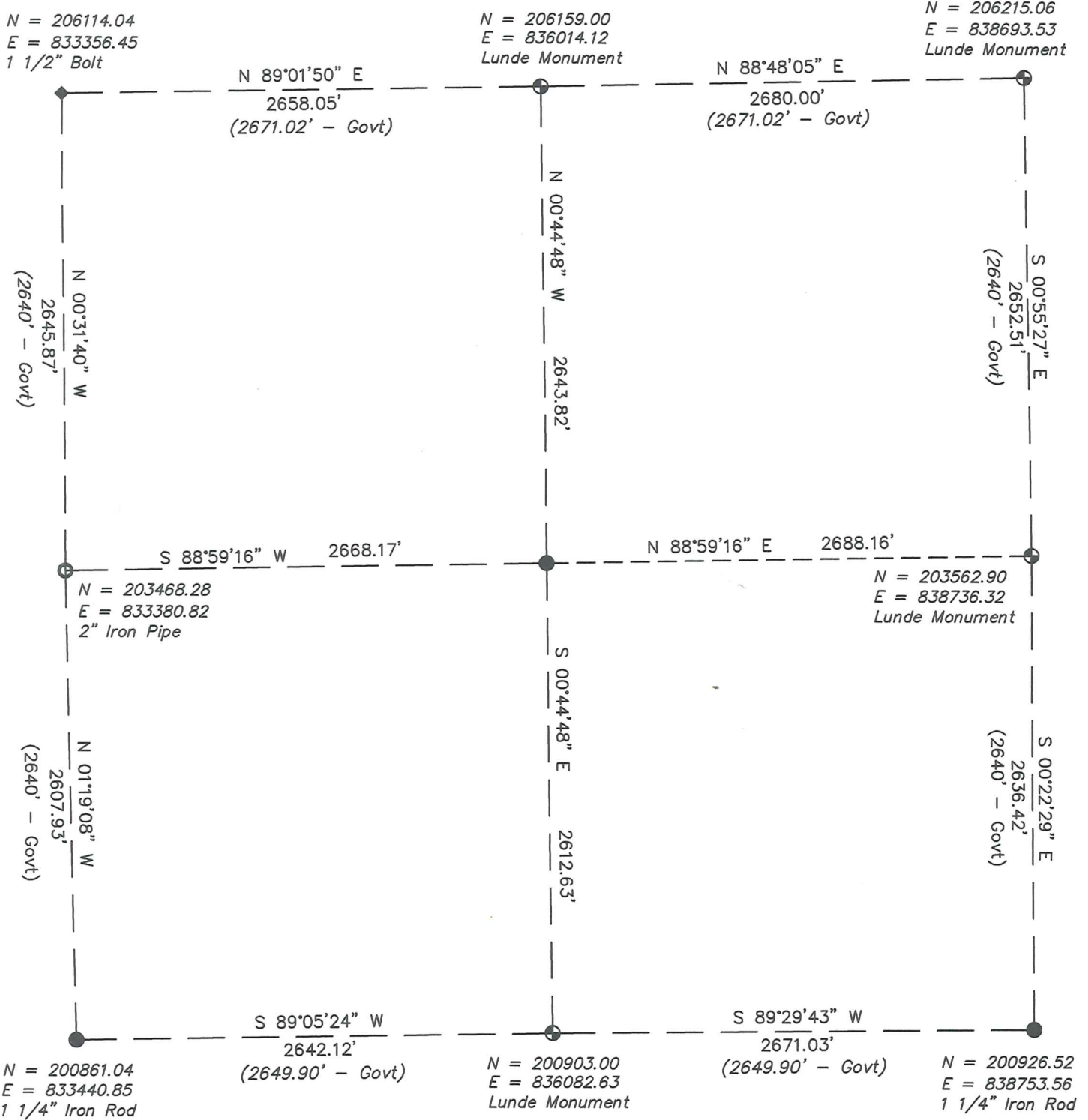
DATE

*Todd T. Rummel* 1/8/02

# Data Sheet

Section 9, T14N, R1E

Town of Hillsboro, Vernon County, Wisconsin



WISCONSIN  
 LAURENCE E. JOHNS III  
 S-2804  
 WILTON, WISCONSIN  
 LAND SURVEYOR  
 21 MAY 07

SCANNED

BB