

VERNON COUNTY CERTIFIED U.S. PUBLIC LAND SURVEY MONUMENT RECORD

INSTRUCTIONS: THIS RECORD SHALL SHOW THE LOCATION OF THE CORNER AND SHALL INCLUDE ALL OF THE FOLLOWING NINE ELEMENTS (A THROUGH I)

(A) IDENTIFY THE CORNER BY REFERENCE TO THE U.S. PUBLIC LAND SURVEY SYSTEM

■ = CORNER MONUMENT RESTORED

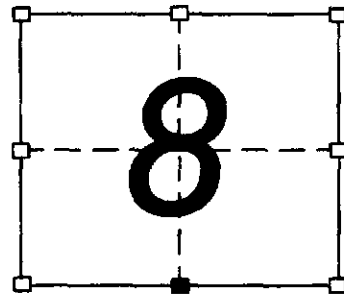
WITNESSES TO CORNER LOCATION:

CHRISTOPHER G. REEDY
MICHAEL J. KAST

STATE PLANE COORDINATES (WISCONSIN SOUTH ZONE)

NORTHING:

EASTING:



(B) DESCRIBE ANY RECORD EVIDENCE, MONUMENT EVIDENCE, OCCUPATIONAL EVIDENCE, TESTIMONIAL EVIDENCE, OR ANY OTHER MATERIAL EVIDENCE YOU CONSIDERED, AND WHETHER THE MONUMENT WAS FOUND OR PLACED.

THERE IS NO RECORD OF THIS CORNER SINCE THE ORIGINAL GOVERNMENT SURVEYS. I SET THIS CORNER BY SINGLE PROPORTIONATE MEASUREMENT BETWEEN THE SW CORNER AND THE SE CORNER. THIS LOCATION FIT WELL WITH FENCES IN THE AREA. THE CORNER FALLS IN A WORKING GRAVEL QUARRY, SO NO MONUMENT WAS SET AT THE CORNER LOCATION.

(C) IN THE PLAN VIEW DRAWING BELOW, PROVIDE REFERENCE TIES TO AT LEAST 4 WITNESS MONUMENTS, OR, IF

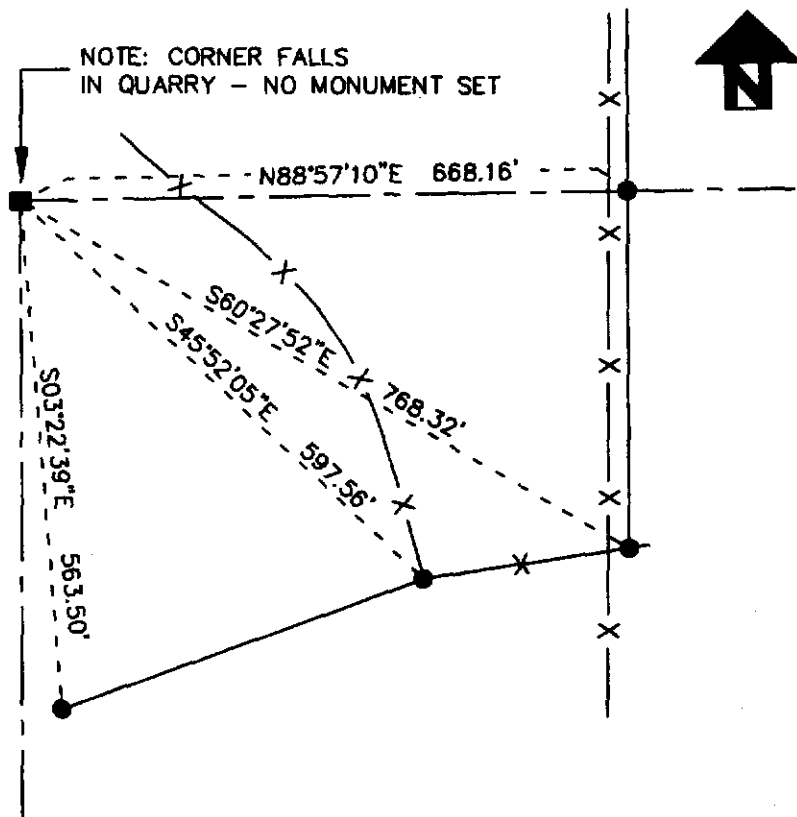
(D) SHOW A PLAN VIEW DRAWING DEPICTING THE RELEVANT MONUMENTS AND

LEGEND

■ LOCATION OF CORNER

● 3/4" X 24" IRON ROD
PROPERTY CORNER

DISTANCES TO NEW TIES
WERE MEASURED BY EDM
HORIZONTALLY.



(E) DESCRIBE ANY MATERIAL DISCREPANCY BETWEEN THE LOCATION OF THE CORNER AS RESTORED OR REESTABLISHED AND THE LOCATION OF THAT CORNER AS PREVIOUSLY RESTORED OR REESTABLISHED BY DISTANCE AND DIRECTION. SHOW THE DISCREPANCY ON THE PLAN VIEW DRAWING UNDER (D), ABOVE. SHOW THE DISTANCES BETWEEN THE CORNER AS PREVIOUSLY RESTORED OR REESTABLISHED AND (1) THE CORNER AS RESTORED OR REESTABLISHED, AND (2) TO AT LEAST 2 OF THE WITNESS MONUMENTS SHOWN ON THE DRAWING IN (D) ABOVE.

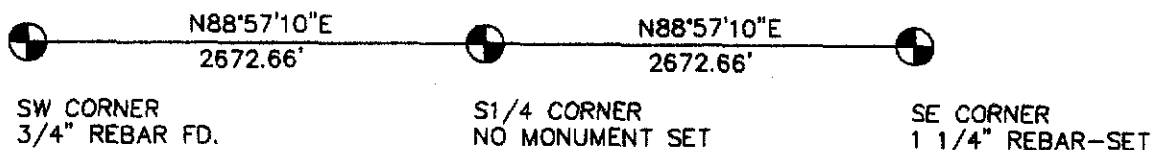
NONE

(F) WAS THE CORNER RESTORED THROUGH ACCEPTANCE OF (1) AN OBLITERATED EVIDENCE LOCATION, OR, (2) A FOUND PERPETUATED LOCATION?

(1) AN OBLITERATED EVIDENCE LOCATION

(G&H) WAS THE CORNER REESTABLISHED THROUGH LOST CORNER PROPORTIONATE METHODS? IF SO, SHOW THE METHOD, INCLUDING THE DIRECTIONS AND DISTANCES TO OTHER PUBLIC LAND SURVEY CORNERS USED AS EVIDENCE OR USED FOR PROPORTIONING IN DETERMINING THE CORNER LOCATION.

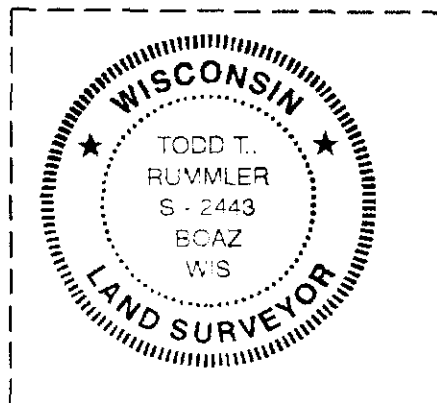
YES



AFFIX LAND SURVEYOR SEAL

(I) I, TODD T. RUMMLER, R.L.S. - 2443

CERTIFY THAT THE CORNER LOCATION SHOWN ON THIS RECORD WAS DETERMINED BY ME OR UNDER MY DIRECTION AND CONTROL AND THAT THIS U.S. PUBLIC LAND SURVEY MONUMENT RECORD IS CORRECT AND COMPLETE TO THE BEST OF MY KNOWLEDGE AND BELIEF.



SIGNATURE

DATE