

VERNON COUNTY CERTIFIED U.S. PUBLIC LAND SURVEY MONUMENT RECORD

INSTRUCTIONS: THIS RECORD SHALL SHOW THE LOCATION OF THE CORNER AND SHALL INCLUDE ALL OF THE FOLLOWING NINE ELEMENTS (A THROUGH I)

(A) IDENTIFY THE CORNER BY REFERENCE TO THE U.S. PUBLIC LAND SURVEY SYSTEM

■ = CORNER MONUMENT RESTORED

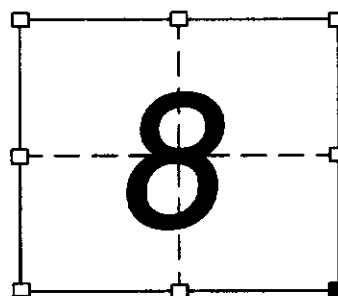
WITNESSES TO CORNER LOCATION:

DAN J. QUINN
MICHAEL J. KAST

STATE PLANE COORDINATES (WISCONSIN SOUTH ZONE)

NORTHING:

EASTING:



SECTION 8, T14N, R1E



(B) DESCRIBE ANY RECORD EVIDENCE, MONUMENT EVIDENCE, OCCUPATIONAL EVIDENCE, TESTIMONIAL EVIDENCE, OR ANY OTHER MATERIAL EVIDENCE YOU CONSIDERED, AND WHETHER THE MONUMENT WAS FOUND OR PLACED.

THERE IS NO RECORD OF THIS CORNER SINCE THE ORIGINAL GOVERNMENT SURVEYS. I FOUND A 2" IRON PIPE IN THIS AREA AS WELL AS A 44" SUGAR MAPLE. ORIGINAL GOVERNMENT SURVEY NOTES STATE THAT A 14" SUGAR MAPLE WAS ESTABLISHED AS A BEARING TREE FOR THIS CORNER. I BELIEVE THE 44" MAPLE IS THIS BEARING TREE AND SET THE CORNER PER THE ORIGINAL TIE STATED IN THE NOTES.

(C) IN THE PLAN VIEW DRAWING BELOW, PROVIDE REFERENCE TIES TO AT LEAST 4 WITNESS MONUMENTS, OR, IF

(D) SHOW A PLAN VIEW DRAWING DEPICTING THE RELEVANT MONUMENTS AND

LEGEND

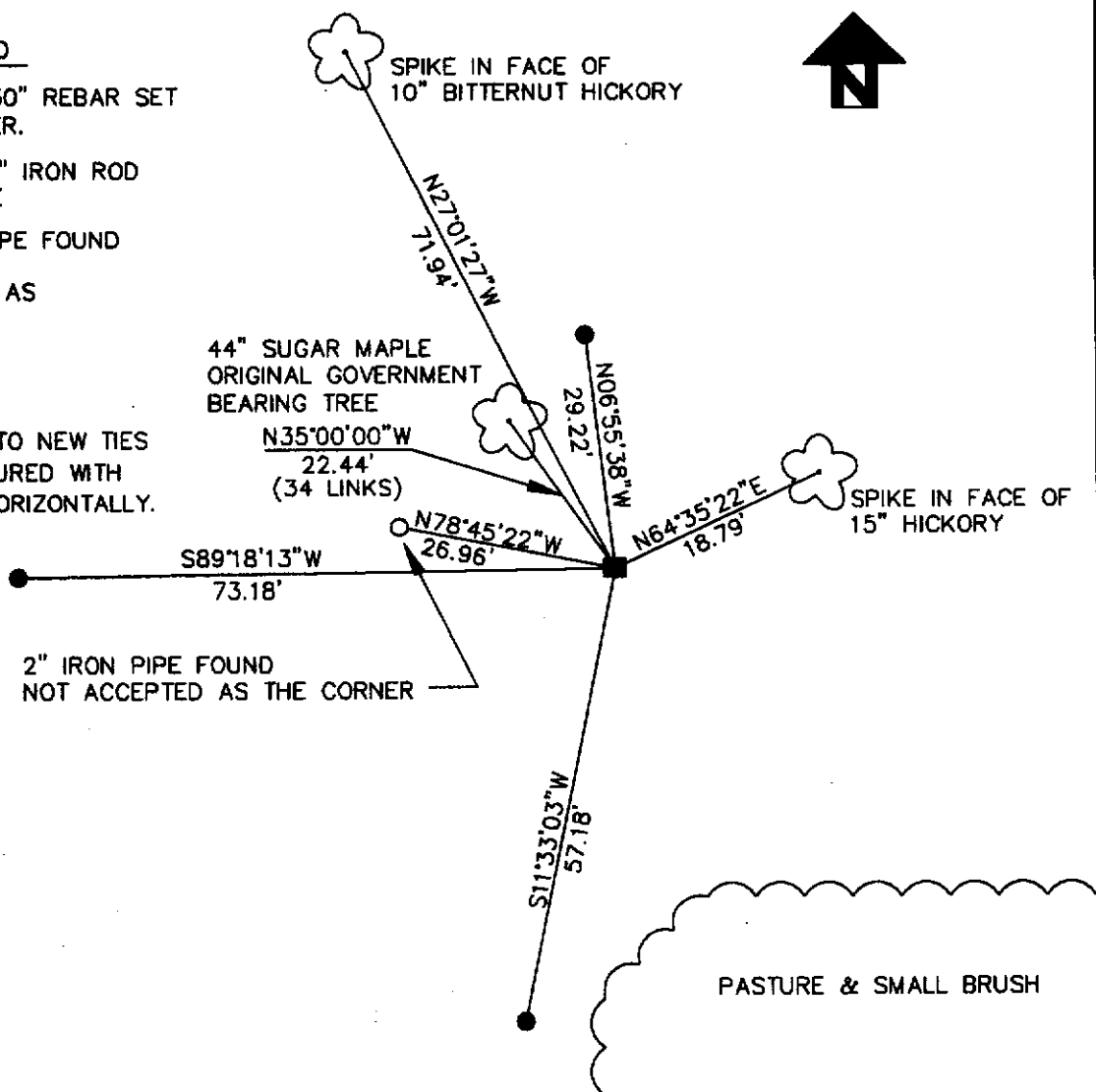
■ 1 1/4" X 30" REBAR SET FOR CORNER.

● 3/4" X 24" IRON ROD SET AS TIE

○ 2" IRON PIPE FOUND

() RECORDED AS

DISTANCES TO NEW TIES WERE MEASURED WITH AN E.D.M HORIZONTALLY.



(E) DESCRIBE ANY MATERIAL DISCREPANCY BETWEEN THE LOCATION OF THE CORNER AS RESTORED OR REESTABLISHED AND THE LOCATION OF THAT CORNER AS PREVIOUSLY RESTORED OR REESTABLISHED BY DISTANCE AND DIRECTION. SHOW THE DISCREPANCY ON THE PLAN VIEW DRAWING UNDER (D), ABOVE. SHOW THE DISTANCES BETWEEN THE CORNER AS PREVIOUSLY RESTORED OR REESTABLISHED AND (1) THE CORNER AS RESTORED OR REESTABLISHED, AND (2) TO AT LEAST 2 OF THE WITNESS MONUMENTS SHOWN ON THE DRAWING IN (D) ABOVE.

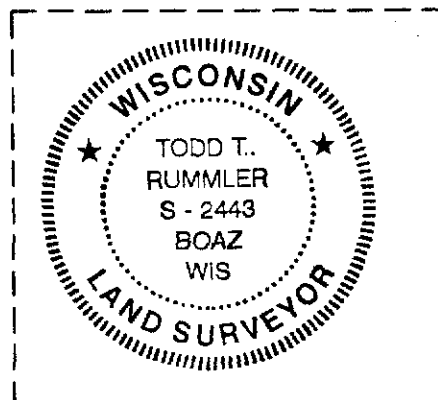
NONE

(F) WAS THE CORNER RESTORED THROUGH ACCEPTANCE OF (1) AN OBLITERATED EVIDENCE LOCATION, OR, (2) A FOUND PERPETUATED LOCATION?
(2) A FOUND PERPETUATED LOCATION

(G&H) WAS THE CORNER REESTABLISHED THROUGH LOST CORNER PROPORTIONATE METHODS? IF SO, SHOW THE METHOD, INCLUDING THE DIRECTIONS AND DISTANCES TO OTHER PUBLIC LAND SURVEY CORNERS USED AS EVIDENCE OR USED FOR PROPORTIONING IN DETERMINING THE CORNER LOCATION.

NO.

AFFIX LAND SURVEYOR SEAL



(I) I, TODD T. RUMMLER, R.L.S. - 2443

CERTIFY THAT THE CORNER LOCATION SHOWN ON THIS RECORD WAS DETERMINED BY ME OR UNDER MY DIRECTION AND CONTROL AND THAT THIS U.S. PUBLIC LAND SURVEY MONUMENT RECORD IS CORRECT AND COMPLETE TO THE BEST OF MY KNOWLEDGE AND BELIEF.

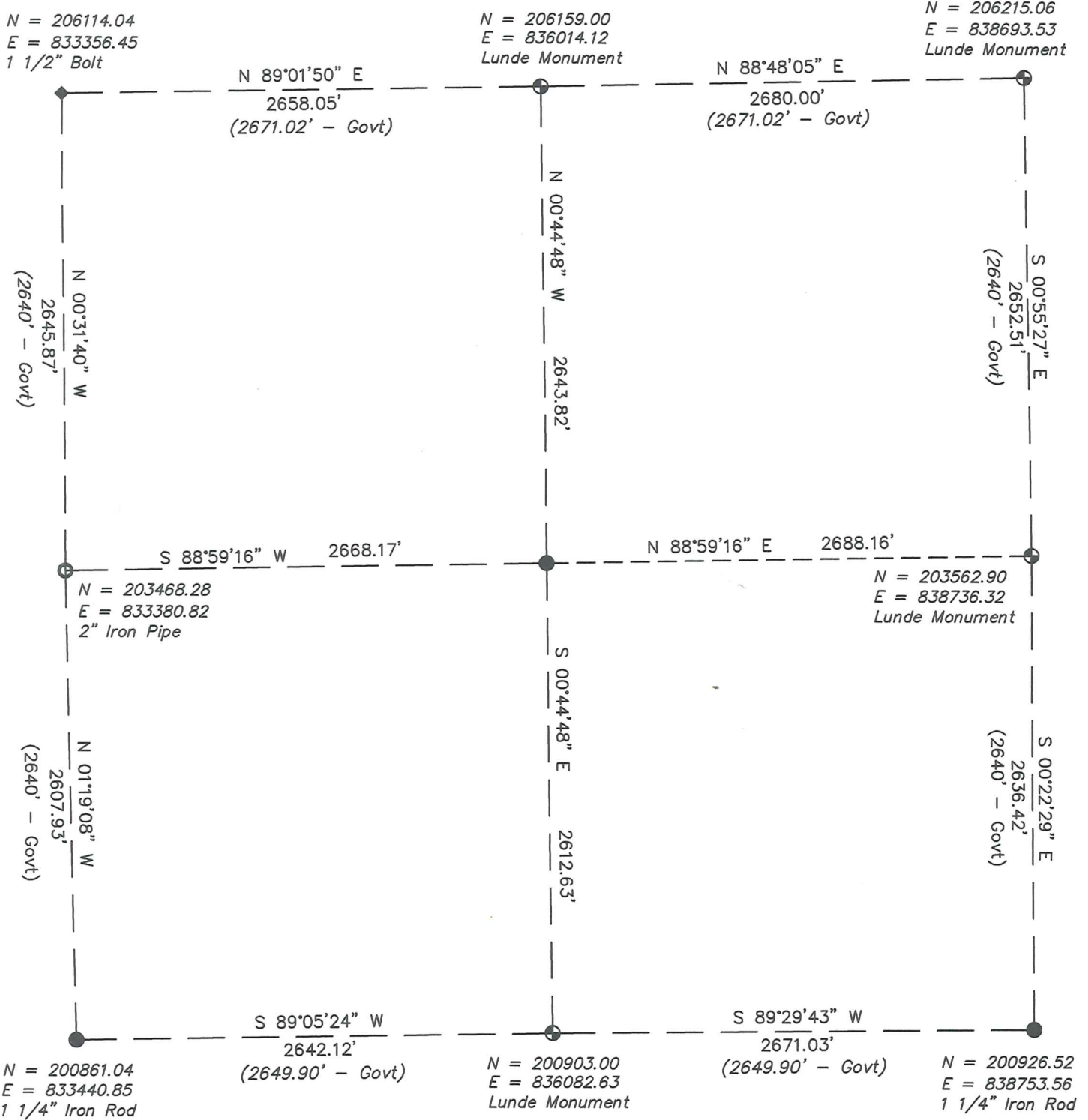

SIGNATURE

1/8/02
DATE

Data Sheet

Section 9, T14N, R1E

Town of Hillsboro, Vernon County, Wisconsin



WISCONSIN
 LAURENCE E. JOHNS III
 S-2804
 WILTON, WISCONSIN
 LAND SURVEYOR
 21 MAY 07

SCANNED

BB