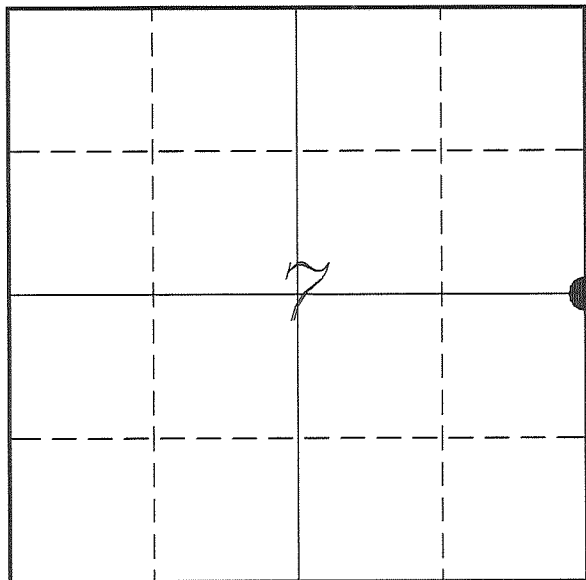


U. S. PUBLIC LAND SURVEY MONUMENT RECORD

**SECTION 7, T14N, R1E, TOWN OF HILLSBORO
VERNON COUNTY, WISCONSIN**



LOCATION OF LANDMARK

VERNON COUNTY COORDINATE SYSTEM	
Northing	203394.989
Easting	828077.638
Datum	NAD 1983 (2011)
Elevation	
Datum	
TYPE OF LANDMARK: Set Lunde Monument 4" Brass Capped Iron Pipe	
BEARINGS ARE REFERENCED TO: Vernon County Coordinates (Survey Grade)	

Witnesses: Larry Handschy
Al Hoff

Eagle Ridge Surveying
PO Box 213
Wilton, Wisconsin

Date: 13 June 2017

Describe any record evidence, monument evidence, testimonial evidence or any other material evidence you considered and whether the monument was found or restored through acceptance of an obliterated evidence location.

No bearing trees of record were located.

Found the 3/4" iron rod as shown on Rummler's tie sheet. I found no record of the origin of this rod. Rummler's tie sheet shows that he found spikes in trees and used them as ties. I found those trees as well.

Distances to the North and South fit very well with government distances.

The occupation at this corner is a long standing occupation and I accepted this monument as the best available evidence of the original government corner and replaced it with a Lunde Monument.

Describe or show any material discrepancy between the location of the restored corner and that of the corner previously restored or re-established.

John E Davidson established this corner in December 1852.

Alex Ristow was at this corner, in January 1907, during a survey in Section 8. He shows finding the government corner.

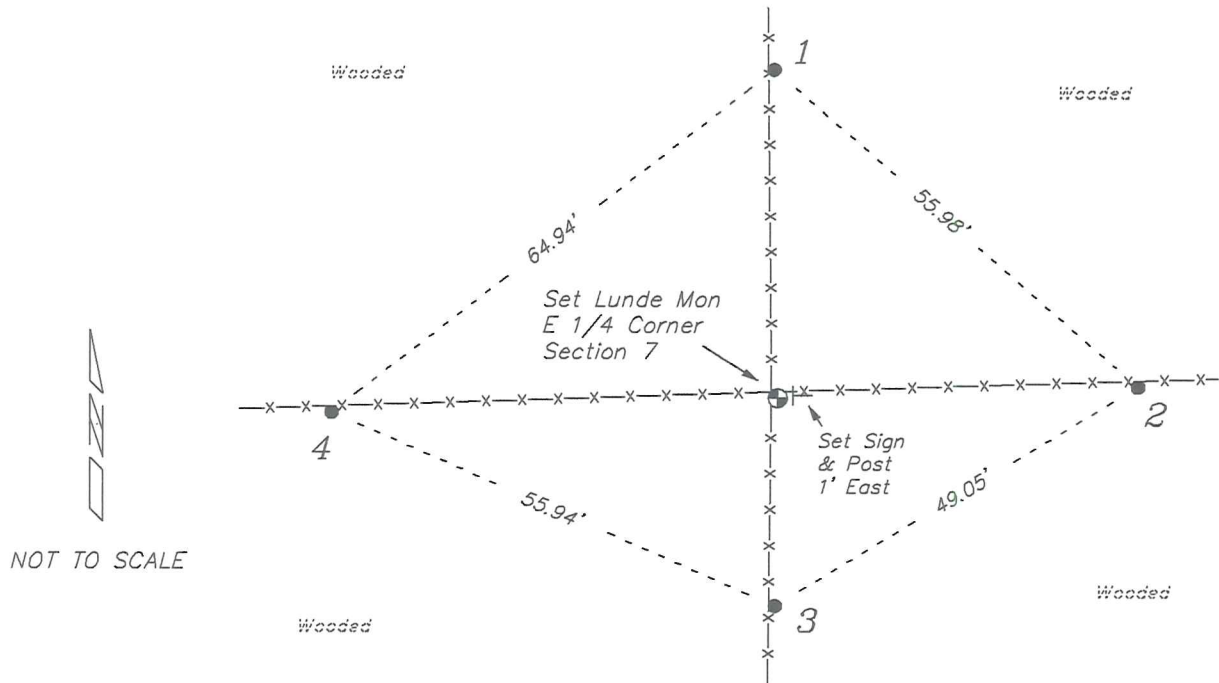
Richard Blakeslee was at this corner, in May 1999. He shows a found 3/4" iron rod on a section summary attached to the tie sheet for the SE Corner of Section 7.

Todd Rummler was at this corner, in January 2002, during a survey in Section 8. He shows that he found a 3/4" iron rod and prepared a tie sheet.

Wesley Kraemer was at this corner, in March 2014, during a survey in Section 8. He shows finding a 3/4" iron rod.

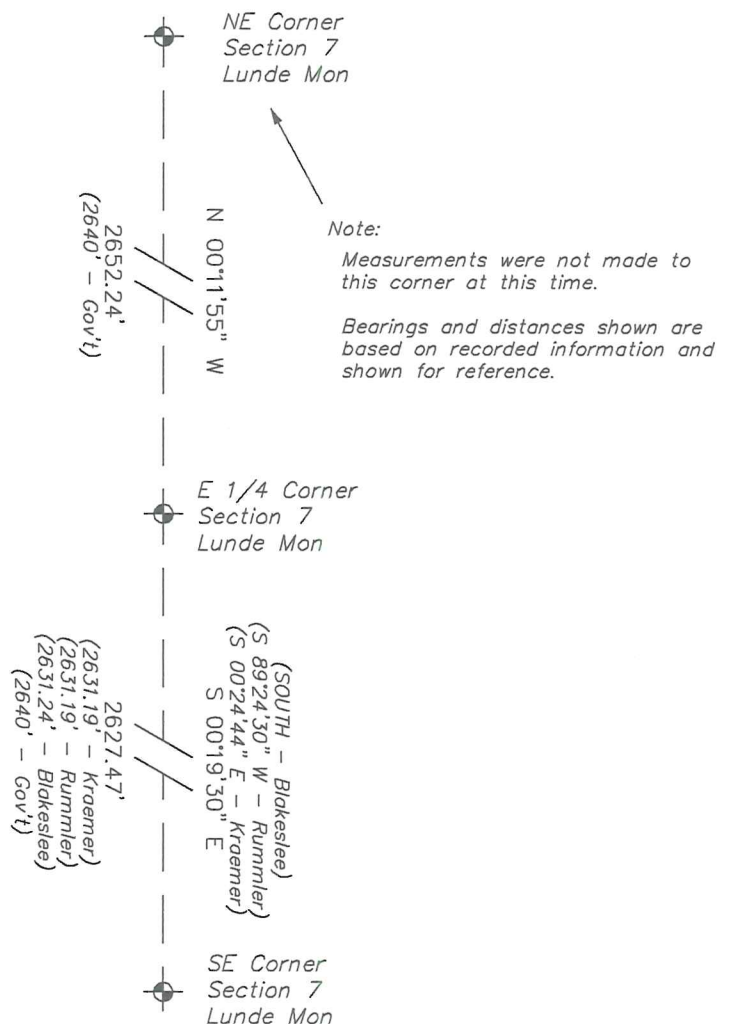
RECORD OF DURABLE WITNESS MONUMENTS

NO	DESCRIPTION	BEARING	DISTANCE
1	Set 3/4" x 18" Iron Rod In Fence Line	N 00°34'38" W	38.30'
2	Set 3/4" x 18" Iron Rod In Fence Line	N 88°11'32" E	41.66'
3	Set 3/4" x 18" Iron Rod In Fence Line	S 00°40'51" W	24.15'
4	Set 3/4" x 18" Iron Rod In Fence Line	S 88°05'43" W	51.56'



PLAN VIEW DRAWING OF REFERENCE TIES

Map Showing Distance And Direction To Other Public Land Survey
Corners Used For Re-Establishing The Corner



I, Laurence E Johns III PLS 2804, Professional Land Surveyor, hereby certify that the corner location shown on this record was determined by me or under my direction and control, and that this U.S. Public Land Survey Monument Record is correct and complete to the best of my knowledge and belief.

VERNON COUNTY CERTIFIED U.S. PUBLIC LAND SURVEY MONUMENT RECORD

INSTRUCTIONS: THIS RECORD SHALL SHOW THE LOCATION OF THE CORNER AND SHALL INCLUDE ALL OF THE FOLLOWING NINE ELEMENTS (A THROUGH I)

(A) IDENTIFY THE CORNER BY REFERENCE TO THE U.S. PUBLIC LAND SURVEY SYSTEM

■ = CORNER MONUMENT RESTORED

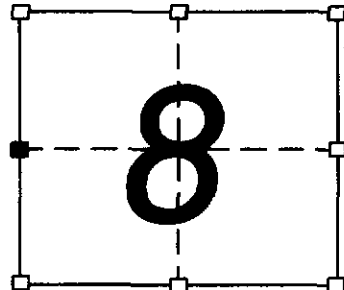
WITNESSES TO CORNER LOCATION:

DAN J. QUINN
MICHAEL J. KAST

STATE PLANE COORDINATES (WISCONSIN SOUTH ZONE)

NORTHING:

EASTING:



SECTION 8, T14N, R1E



(B) DESCRIBE ANY RECORD EVIDENCE, MONUMENT EVIDENCE, OCCUPATIONAL EVIDENCE, TESTIMONIAL EVIDENCE, OR ANY OTHER MATERIAL EVIDENCE YOU CONSIDERED, AND WHETHER THE MONUMENT WAS FOUND OR PLACED.

RICHARD BLAKESLEE NOTED THIS CORNER ON A SUMMARY OF SECTION 7 DATED MAY 17, 1999. I DID NOT FIND A TIE SHEET OF THIS CORNER IN THE VERNON COUNTY RECORDS BUT I DID FIND THE REBAR SHOWN ON BLAKESLEE'S SUMMARY AND ACCEPTED IT AS THE CORNER.

(C) IN THE PLAN VIEW DRAWING BELOW, PROVIDE REFERENCE TIES TO AT LEAST 4 WITNESS MONUMENTS, OR, IF

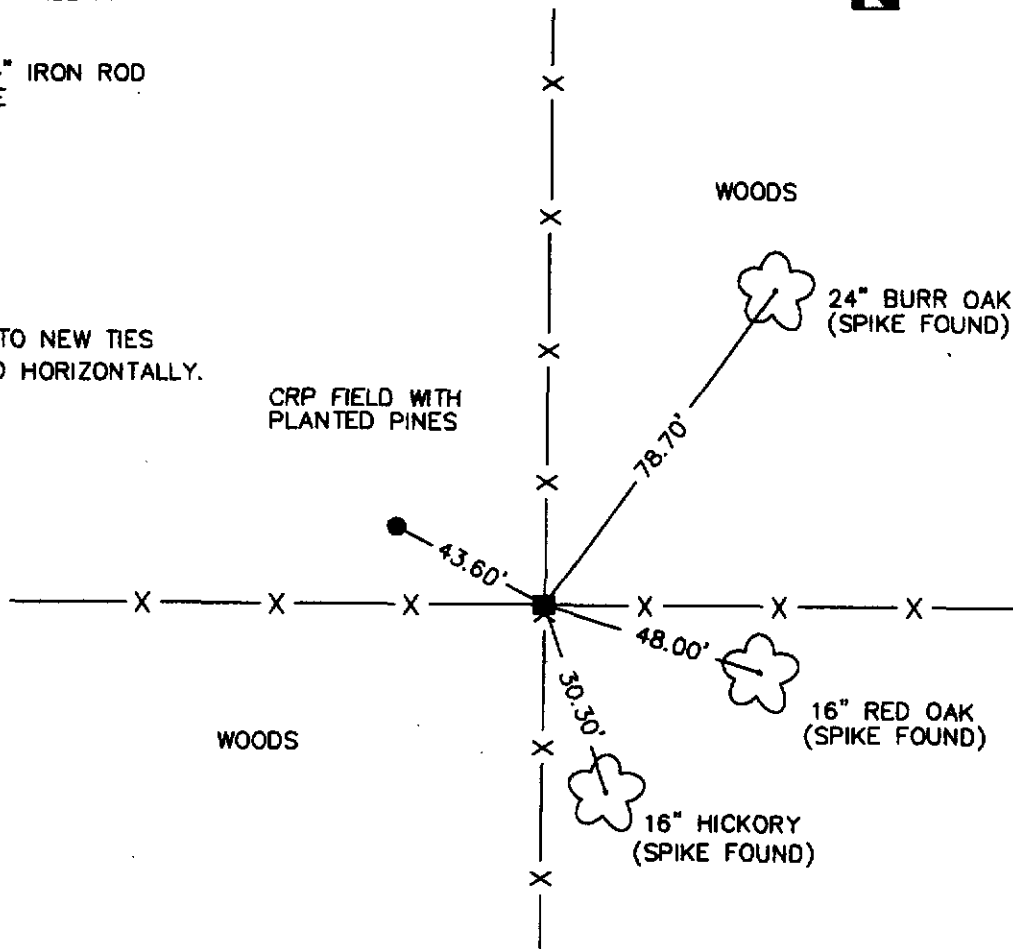
(D) SHOW A PLAN VIEW DRAWING DEPICTING THE RELEVANT MONUMENTS AND

LEGEND

■ FOUND 3/4" REBAR

● 3/4" X 24" IRON ROD SET AS TIE

DISTANCES TO NEW TIES WERE TAPED HORIZONTALLY.



(E) DESCRIBE ANY MATERIAL DISCREPANCY BETWEEN THE LOCATION OF THE CORNER AS RESTORED OR REESTABLISHED AND THE LOCATION OF THAT CORNER AS PREVIOUSLY RESTORED OR REESTABLISHED BY DISTANCE AND DIRECTION. SHOW THE DISCREPANCY ON THE PLAN VIEW DRAWING UNDER (D), ABOVE. SHOW THE DISTANCES BETWEEN THE CORNER AS PREVIOUSLY RESTORED OR REESTABLISHED AND (1) THE CORNER AS RESTORED OR REESTABLISHED, AND (2) TO AT LEAST 2 OF THE WITNESS MONUMENTS SHOWN ON THE DRAWING IN (D) ABOVE.

NONE

(F) WAS THE CORNER RESTORED THROUGH ACCEPTANCE OF (1) AN OBLITERATED EVIDENCE LOCATION, OR, (2) A FOUND PERPETUATED LOCATION?

(2) A FOUND PERPETUATED LOCATION

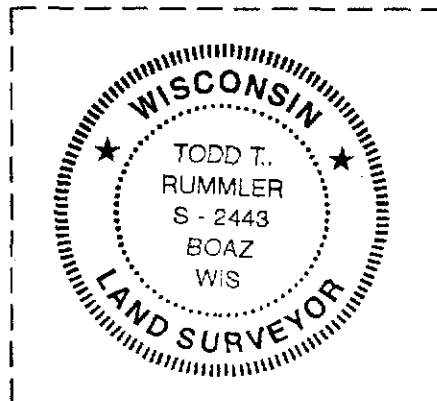
(G&H) WAS THE CORNER REESTABLISHED THROUGH LOST CORNER PROPORTIONATE METHODS? IF SO, SHOW THE METHOD, INCLUDING THE DIRECTIONS AND DISTANCES TO OTHER PUBLIC LAND SURVEY CORNERS USED AS EVIDENCE OR USED FOR PROPORTIONING IN DETERMINING THE CORNER LOCATION.

NO.

AFFIX LAND SURVEYOR SEAL

(I) I, TODD T. RUMMLER, R.L.S. - 2443

CERTIFY THAT THE CORNER LOCATION SHOWN ON THIS RECORD WAS DETERMINED BY ME OR UNDER MY DIRECTION AND CONTROL AND THAT THIS U.S. PUBLIC LAND SURVEY MONUMENT RECORD IS CORRECT AND COMPLETE TO THE BEST OF MY KNOWLEDGE AND BELIEF.



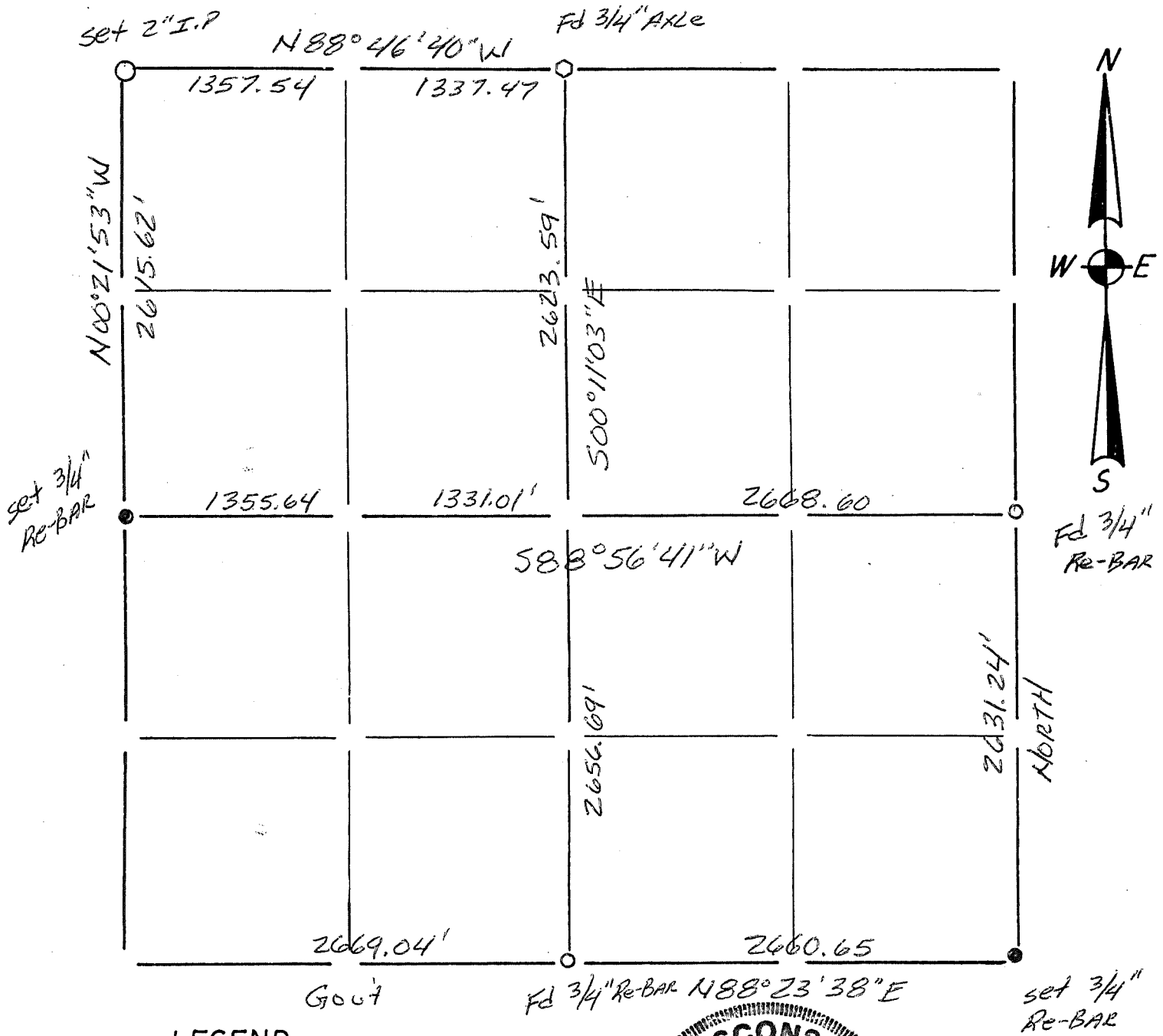
SIGNATURE

DATE

Todd T. Rummeler 1/8/02

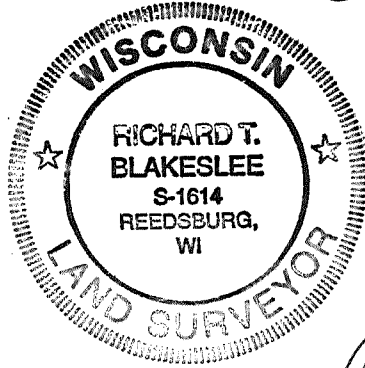
Section Summary and Index

7 - 14 - 1E
Section Town Range



LEGEND

- ⊕ - Harrison cast iron monument.
- - Stone or concrete monument.
- - Other _____
- _____
- _____
- _____



Richard T. Blakeslee
5/17/99

Summary of Pg. 30-32