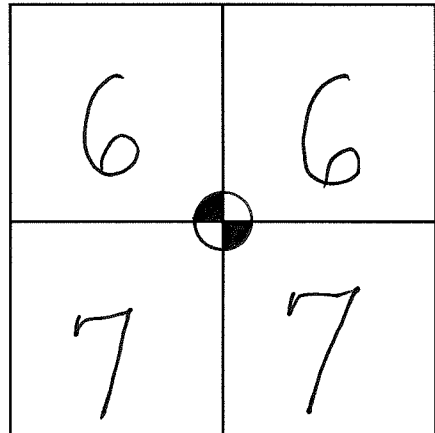


VERNON COUNTY CERTIFIED U.S. PUBLIC LAND SURVEY MONUMENT RECORD

INSTRUCTIONS: THIS RECORD SHALL SHOW THE LOCATION OF THE CORNER AND SHALL INCLUDE ALL OF THE FOLLOWING ELEMENTS (A-I)

TN. HILLSBORO

(A) IDENTIFY THE CORNER BY REFERENCE TO THE U.S. PUBLIC LAND SURVEY SYSTEM



■ = CORNER MONUMENT RESTORED

WITNESSES TO CORNER LOCATION:

- 1)
- 2)
- 3)

STATE PLANE COORDINATES (WISCONSIN SOUTH ZONE)

NORTHING:
EASTING:

SECTION , TOWN 14 NORTH, RANGE 1 EAST

VERNON COUNTY COORDINATES

NORTHING:
EASTING:

*N 205950.11
E 825382.90 NAD83(2007)*

(B) DESCRIBE ANY RECORD EVIDENCE, MONUMENT EVIDENCE, OCCUPATIONAL EVIDENCE, TESTIMONIAL EVIDENCE OR ANY OTHER MATERIAL EVIDENCE YOU CONSIDERED, AND WHETHER THE MONUMENT WAS FOUND OR PLACED.

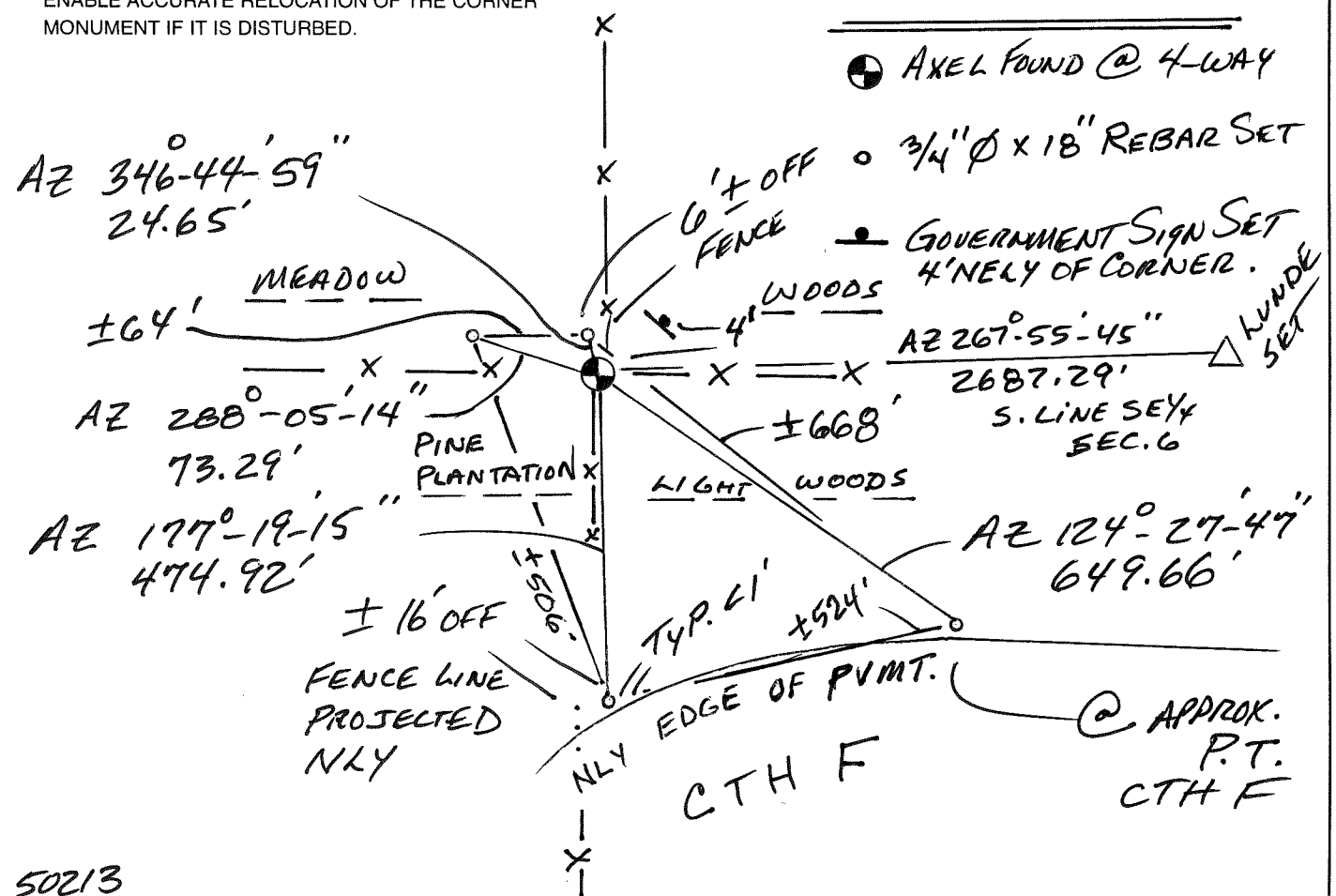
THE ACCEPTED MONUMENT IS AN IRON AXEL ADJACENT TO AND ON THE WESTERLY SIDE OF A STONE, @ 4-WAY FENCE LINE INTERSECTION. I TOOK INTO ACCOUNT ALL ITEMS IN THE BACK PAGE CORNER HISTORY. OCCUPATION & MEASUREMENT EVIDENCE TO THE SE COR. OF SEC. 6.

(C) IN THE PLAN VIEW DRAWING BELOW, PROVIDE REFERENCE TIES TO AT LEAST 4 WITNESS MONUMENTS OR, IF THE LOCATION IS WITHIN A MUNICIPALITY, TO AT LEAST 2 WITNESS MONUMENTS. (WITNESS MONUMENTS SHALL BE MADE OF CONCRETE, NATURAL STONE, IRON, OR OTHER EQUALLY DURABLE MATERIAL.) DESCRIBE WITNESS MONUMENTS.

*NOTE: ALL AZIMUTHS SHOWN BELOW BASED ON GRID NORTH.
DRAWING BELOW IS NOT TO SCALE.*

(D) SHOW A PLAN VIEW DRAWING, DEPICTING THE RELEVANT MONUMENTS AND REFERENCE TIES, WHICH IS SUFFICIENTLY DETAILED TO ENABLE ACCURATE RELOCATION OF THE CORNER MONUMENT IF IT IS DISTURBED.

KEY



(E) DESCRIBE ANY MATERIAL DISCREPANCY BETWEEN THE LOCATION OF THE CORNER AS RESTORED OR REESTABLISHED AND THE LOCATION OF THAT CORNER AS PREVIOUSLY RESTORED OR REESTABLISHED BY DISTANCE AND DIRECTION. SHOW THE DISCREPANCY ON THE PLAN VIEW DRAWING UNDER (D), ABOVE. SHOW THE DISTANCES BETWEEN THE CORNER AS PREVIOUSLY RESTORED OR REESTABLISHED AND (1) THE CORNER AS RESTORED OR REESTABLISHED, AND (2) TO AT LEAST 2 OF THE WITNESS MONUMENTS AS SHOWN ON THE DRAWING IN (D), ABOVE.

NONE.

(F) WAS THE CORNER RESTORED THROUGH ACCEPTANCE OF (1) AN OBLITERATED EVIDENCE LOCATION, OR (2) A FOUND PERPETUATED LOCATION?

A FOUND PERPETUATED POSITION.

(G & H) WAS THE CORNER REESTABLISHED THROUGH LOST CORNER PROPORTIONATE METHODS? IF SO SHOW THE METHOD, INCLUDING THE DIRECTION AND DISTANCES TO OTHER PUBLIC LAND SURVEY CORNERS USED AS EVIDENCE OR USED FOR PROPORTIONING IN DETERMINING THE CORNER LOCATION.

No.

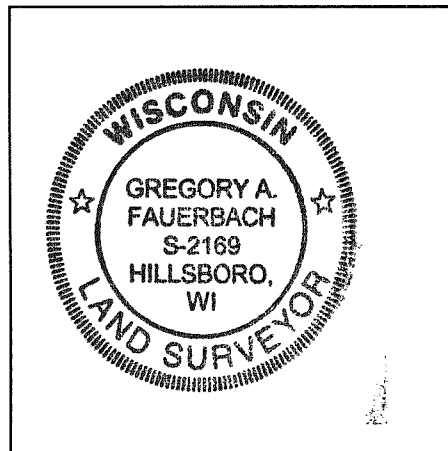
Corner History:

Town Lines by Stuntz & Sargent, July, 1851.
Josuah Hathaway did the West Side of Town Range Lines, May, 1839.
John E. Davidson subdivided the Town & on Jan. 10, 1851 ran the South line of Section 6 Measuring 80.30 Chains. Pg. 54-55 in Notes. He set a Post at this Corner. BT's Sugar 12, N 10degE, 7 links and Sugar 18, S 64degW, 44 links. Both Gone.
County Surveyor Alex Ristow visits the Corner April 28-30, 1903, Vol. 2, Pg. 87, #169.
County Surveyor E.J. Older visits the Corner Oct. 28-29, 1912 Vol. 2, Pg. 94, #187 and calls out a BT Red Oak 10, N 5.5degW, 26.5 links.
Surveyor Paul Chafer used this Corner in the Heding Realty Survey Dated 5-15-86.
Surveyor Rich Blakeslee used the Axel in his Section 7 CSM Doc. 376549 and Noted the Axel on Section 7 Summaries Dated May 17, 1999 and June 26, 2006.

AFFIX LAND SURVEYOR SEAL

(I) I, GREG FAUERBACH CERTIFY THAT THE LOCATION SHOWN ON THIS RECORD WAS DETERMINED BY ME OR UNDER MY DIRECTION AND CONTROL AND THAT THIS U.S. PUBLIC LAND SURVEY MONUMENT RECORD IS CORRECT AND COMPLETE TO THE BEST OF MY KNOWLEDGE AND BELIEF.

Greg A. Fauerbach 4/8/13
SIGNATURE DATE



50213

VERNON COUNTY COORDINATE FORM

"As An Addendum To"

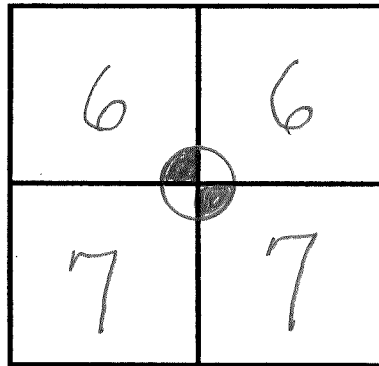
A CERTIFIED U.S. PUBLIC LAND SURVEY MONUMENT RECORD

FAX 637-3823

INSTRUCTIONS: THIS RECORD FORM SHOULD BE USED WHEN COORDINATES ARE PROVIDED FOR A PUBLIC LAND SURVEY CORNER AND SHALL INCLUDE ALL OF THE FOLLOWING ELEMENTS (A-D)

(A) IDENTIFY THE CORNER BY REFERENCE TO THE U.S. PUBLIC LAND SURVEY SYSTEM IN DIAGRAM AT RIGHT

■ = CORNER MONUMENT



(B) COORDINATES:

GEOGRAPHIC (Degrees Minutes Decimal Seconds to 4 places):

LATITUDE: 43°-42'-41.90966" N

LONGITUDE: 90°-25'-21.41442" W

ELLIPSOID HT (m): _____

HORIZONTAL DATUM: NADE83 (2007)

ORTHOMETRIC HT (U.S. ft): _____

VERTICAL DATUM: _____

CONTROL POINTS
Coord. Quality (+/-)

VERNON COUNTY (U.S. FEET)

NORTHING (Y): 205950.11

EASTING (X): 825382.90

02 LEICA NETWORK
02 POWER GS-09

T 14 N, R 1 E

METHOD USED TO COMPUTE COORDINATES (check and complete as applicable): ON CONTROL POINTS,

RTK Observations Static Baselines OPUS Solution (attach copy of OPUS report)

Combination of conventional procedures with GPS observations to set temporary control

Was a Least Squares Adjustment Used to Compute Coordinate? Yes No

For Non-OPUS Based Solutions, List the Control Stations Used for Coordinate Computations (a minimum of 2 different control stations or 2 different time combinations from the same control station are required):

Obs. #	Control Station Name	Station Coordinates (Lat/Long)	Date	Time

* Please List Additional Control Stations Used on Back of Form

When a direct observation of the corner is not possible, and a combination of different GPS and/or conventional procedures must be used to determine coordinate values, provide a brief description of your procedures on the back of form.

(C) REASON FOR COORDINATE SUBMITTAL (check one):

Being Filed With a New U.S. PLS Monument Record

To Correct the Coordinates Listed on a Previously Filed PLS Monument Record

To Provide Coordinates for a Previously Filed PLS Monument Record without Coordinates

To Provide Supplemental Coordinates for a Previously Filed PLS Monument Record

R.L.S. & DATE OF PLS MONUMENT RECORD: _____

(D) AGENT(S) PERFORMING GPS OBSERVATIONS & COORDINATE COMPUTATION

1) N/A G.F.

2) _____

I, GREG FAUERBACH

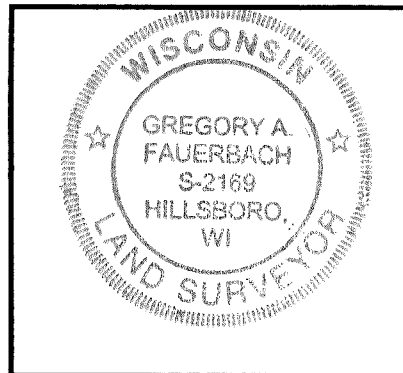
CERTIFY THAT THE COORDINATES PROVIDED ON THIS RECORD WERE DETERMINED BY ME OR UNDER MY DIRECTION AND CONTROL AND THAT THIS COORDINATE SUBMISSION FORM IS CORRECT AND COMPLETE TO THE BEST OF MY KNOWLEDGE AND BELIEF.

Guy Fauerbach 4-8-13

SIGNATURE

DATE

Seal



Mean report for point 310

Use	State	Reference	Date/Time	Posn.diff	Hgt. diff	Posn. + Hgt. diff	Posn. Qty	Hgt. Qty
<input checked="" type="checkbox"/>	Automatic	RTCM-Ref 0193	03/22/2013 15:35:38	0.0554	-0.1068	0.1203	0.0463	0.0776
<input checked="" type="checkbox"/>	Automatic	RTCM-Ref 0193	03/22/2013 15:35:47	0.0254	-0.0687	0.0733	0.0455	0.0843
<input checked="" type="checkbox"/>	Automatic	RTCM-Ref 0759	03/26/2013 14:40:23	0.0270	0.0337	0.0431	0.0293	0.0410
<input checked="" type="checkbox"/>	Automatic	RTCM-Ref 0759	03/26/2013 14:40:32	0.0351	0.0214	0.0411	0.0386	0.0540

Mean report for point 310

Posn. + Hgt. Qty	Northing	Easting	Ellip. Hgt.	Ortho. Hgt.	Geoid Sep.
0.0904	205972.8059	825313.2059	170.5595	1174.5956	-1004.0361
0.0958	205972.8290	825313.2289	170.5214	1174.5575	-1004.0361
0.0504	205972.8810	825313.2323	170.4190	1174.4551	-1004.0361
0.0664	205972.8852	825313.2493	170.4312	1174.4673	-1004.0361

DATE 3-22-13

T@ 310 BS 311
 322-H&R 159°-03'-12", 73.29', AXEL FOUND @ 4-WAY.
 310 - REBAR SET & USED AS NEWLY REF. TIE
 311 - 60d CP SET IN MEADOW

Mean report for point 311

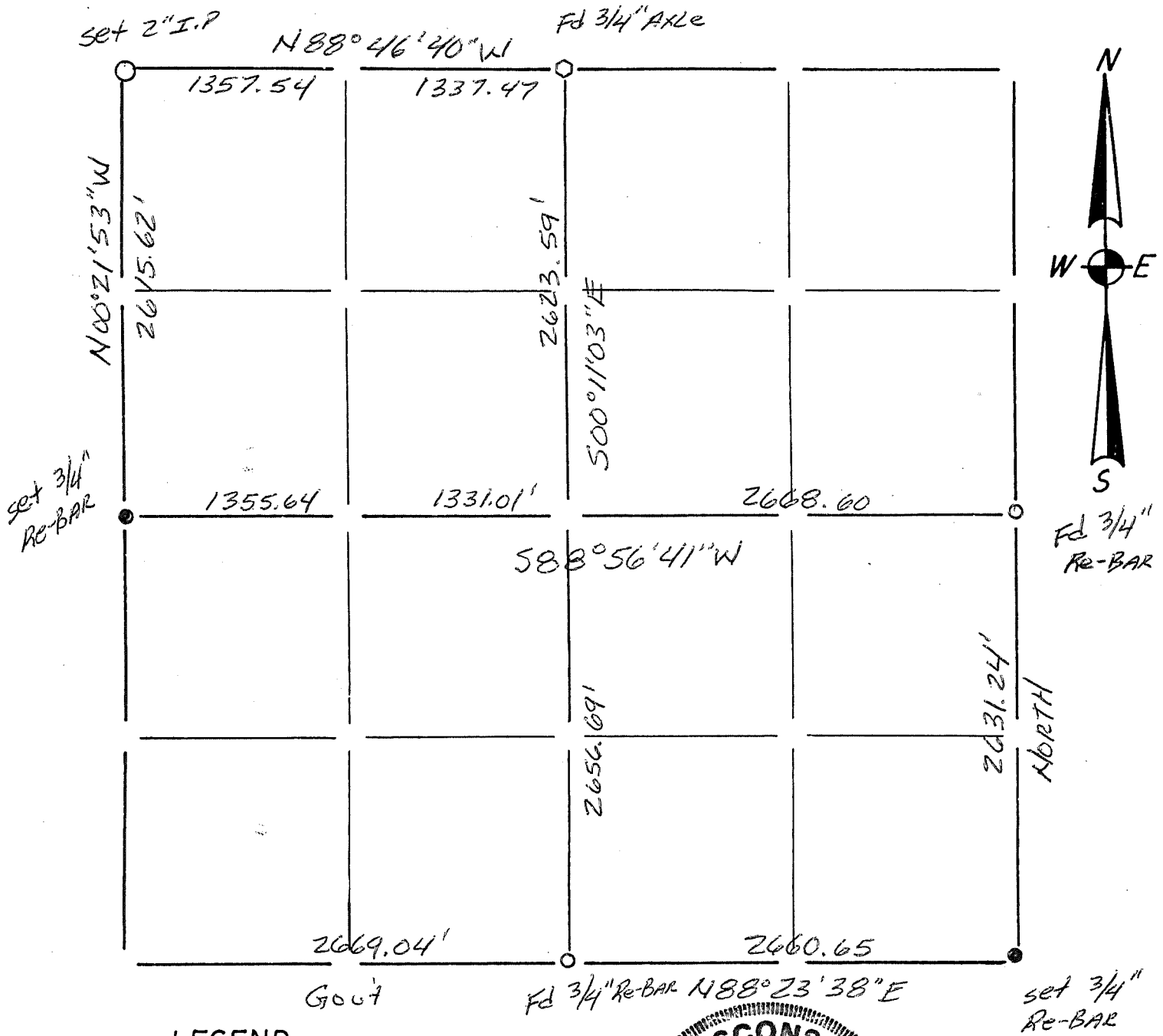
Use	State	Reference	Date/Time	Posn.diff	Hgt. diff	Posn. + Hgt. diff	Posn. Qty	Hgt. Qty
<input checked="" type="checkbox"/>	Automatic	RTCM-Ref 0193	03/22/2013 15:37:45	0.0332	-0.0199	0.0387	0.0275	0.0473
<input checked="" type="checkbox"/>	Automatic	RTCM-Ref 0193	03/22/2013 15:37:52	0.0196	-0.0289	0.0349	0.0273	0.0469
<input checked="" type="checkbox"/>	Automatic	RTCM-Ref 0193	03/22/2013 15:38:02	0.0286	0.0084	0.0298	0.0301	0.0542
<input checked="" type="checkbox"/>	Automatic	RTCM-Ref 0759	03/26/2013 14:41:46	0.0832	0.0124	0.0841	0.0429	0.0592
<input checked="" type="checkbox"/>	Automatic	RTCM-Ref 0759	03/26/2013 14:41:55	0.0554	0.0465	0.0724	0.0395	0.0545

Mean report for point 311

Posn. + Hgt. Qty	Northing	Easting	Ellip. Hgt.	Ortho. Hgt.	Geoid Sep.
0.0547	206023.6630	825250.5758	171.7988	1175.8326	-1004.0338
0.0543	206023.6596	825250.5615	171.8077	1175.8415	-1004.0338
0.0620	206023.6702	825250.5709	171.7705	1175.8043	-1004.0338
0.0731	206023.6589	825250.4597	171.7665	1175.8003	-1004.0338
0.0673	206023.6782	825250.4888	171.7323	1175.7661	-1004.0338

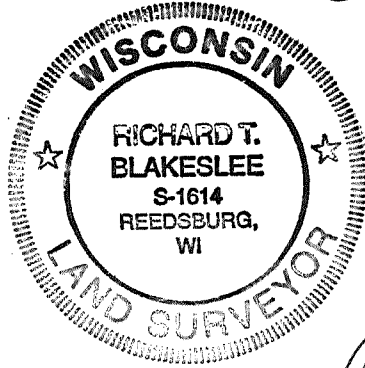
Section Summary and Index

Section 7 - 14 - 1E
Town Range



LEGEND

- ⊕ - Harrison cast iron monument.
- - Stone or concrete monument.
- - Other _____
- _____
- _____
- _____



Richard T. Blakeslee
5/17/99

Summary of Pg. 30-32