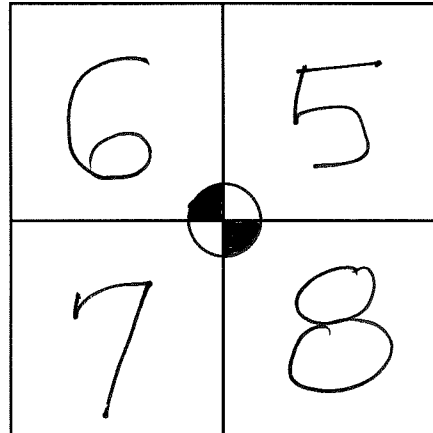


VERNON COUNTY CERTIFIED U.S. PUBLIC LAND SURVEY MONUMENT RECORD

INSTRUCTIONS: THIS RECORD SHALL SHOW THE LOCATION OF THE CORNER AND SHALL INCLUDE ALL OF THE FOLLOWING ELEMENTS (A-1)

TN. OF HILLSBORO

(A) IDENTIFY THE CORNER BY REFERENCE TO THE U.S. PUBLIC LAND SURVEY SYSTEM



■ = CORNER MONUMENT RESTORED

WITNESSES TO CORNER LOCATION:

- 1)
- 2)
- 3)

STATE PLANE COORDINATES (WISCONSIN SOUTH ZONE)

NORTHING:
EASTING:

SECTION , TOWN *14* NORTH, RANGE *1* EAST ~~14~~

VERNON COUNTY COORDINATES

NORTHING:
EASTING:

N 206047.21
E 828068.44 NAD 83 (2007)

(B) DESCRIBE ANY RECORD EVIDENCE, MONUMENT EVIDENCE, OCCUPATIONAL EVIDENCE, TESTIMONIAL EVIDENCE OR ANY OTHER MATERIAL EVIDENCE YOU CONSIDERED, AND WHETHER THE MONUMENT WAS FOUND OR PLACED.

RECORD EVIDENCE IS SHOWN ON PAGE 2. BLAKESLEE USED PAROLE EVIDENCE STATING THE LANDOWNER CLAIMED IT WAS SET LONG AGO BY A SURVEYOR. THERE IS SOME OCCUPATION EVIDENCE. MEASUREMENT EVIDENCE TO S 1/4 COR. SEC. 6 WAS USED AS WELL.

(C) IN THE PLAN VIEW DRAWING BELOW, PROVIDE REFERENCE TIES TO AT LEAST 4 WITNESS MONUMENTS OR, IF THE LOCATION IS WITHIN A MUNICIPALITY, TO AT LEAST 2 WITNESS MONUMENTS. (WITNESS MONUMENTS SHALL BE MADE OF CONCRETE, NATURAL STONE, IRON, OR OTHER EQUALLY DURABLE MATERIAL.) DESCRIBE WITNESS MONUMENTS.

DRAWING BELOW IS NOT TO SCALE

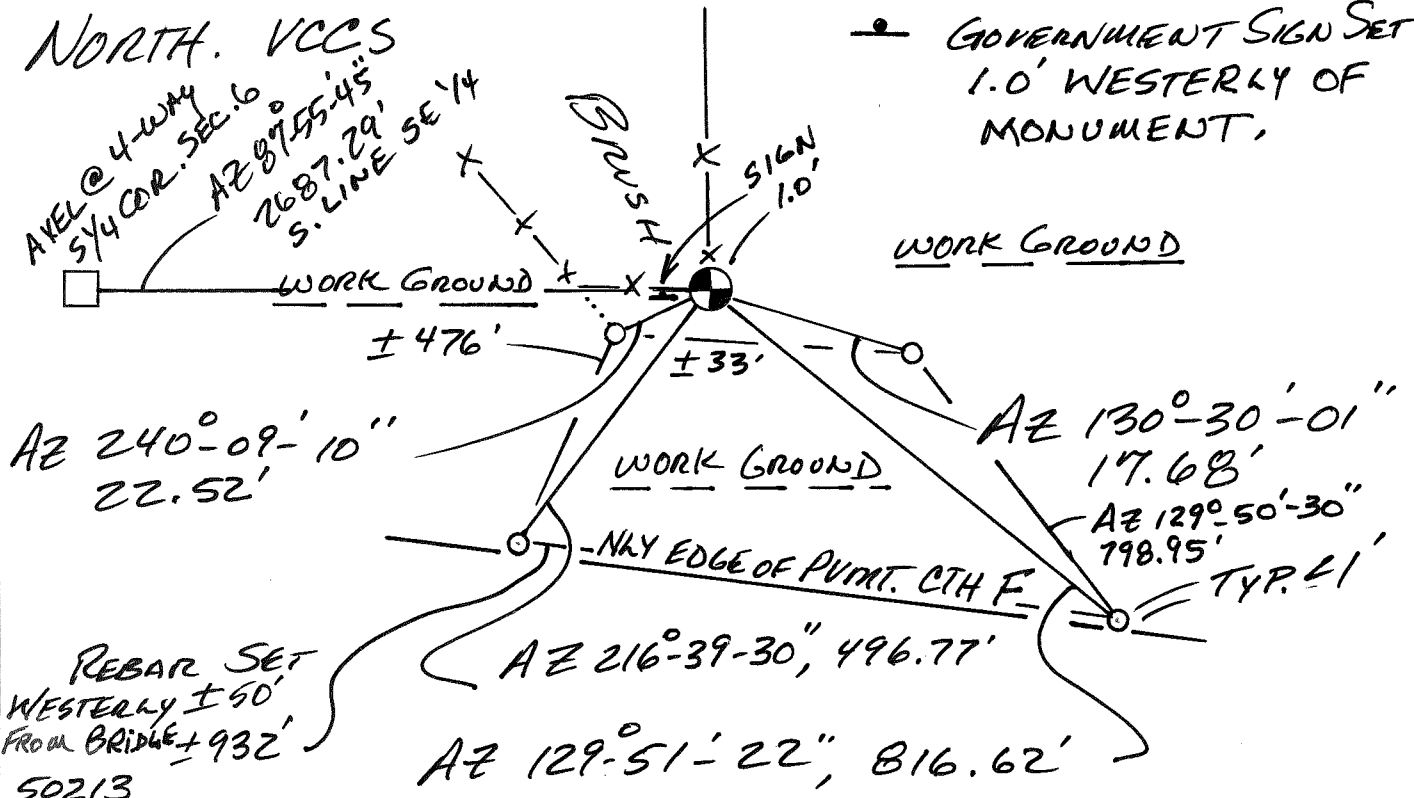
KEY

(D) SHOW A PLAN VIEW DRAWING, DEPICTING THE RELEVANT MONUMENTS AND REFERENCE TIES, WHICH IS SUFFICIENTLY DETAILED TO ENABLE ACCURATE RELOCATION OF THE CORNER MONUMENT IF IT IS DISTURBED.

- LUNDE MONUMENT SET
- 3/4" Ø X 18" REBAR SET
- GOVERNMENT SIGN SET
1.0' WESTERLY OF MONUMENT,

ALL AZIMUTHS SHOWN ARE BASED ON GRID NORTH. VCCS

WORK GROUND



(E) DESCRIBE ANY MATERIAL DISCREPANCY BETWEEN THE LOCATION OF THE CORNER AS RESTORED OR REESTABLISHED AND THE LOCATION OF THAT CORNER AS PREVIOUSLY RESTORED OR REESTABLISHED BY DISTANCE AND DIRECTION. SHOW THE DISCREPANCY ON THE PLAN VIEW DRAWING UNDER (D), ABOVE. SHOW THE DISTANCES BETWEEN THE CORNER AS PREVIOUSLY RESTORED OR REESTABLISHED AND (1) THE CORNER AS RESTORED OR REESTABLISHED, AND (2) TO AT LEAST 2 OF THE WITNESS MONUMENTS AS SHOWN ON THE DRAWING IN (D), ABOVE.

ACCEPTED THE FOUND 1-1/4" IRON PIPE. I WILL REPLACE IT WITH A VERNON Co. LUNDE MONUMENT.

(F) WAS THE CORNER RESTORED THROUGH ACCEPTANCE OF (1) AN OBLITERATED EVIDENCE LOCATION, OR (2) A FOUND PERPETUATED LOCATION?

A FOUND PERPETUATED POSITION.

(G & H) WAS THE CORNER REESTABLISHED THROUGH LOST CORNER PROPORTIONATE METHODS? IF SO SHOW THE METHOD, INCLUDING THE DIRECTION AND DISTANCES TO OTHER PUBLIC LAND SURVEY CORNERS USED AS EVIDENCE OR USED FOR PROPORTIONING IN DETERMINING THE CORNER LOCATION.

No.

CORNER HISTORY:

STUNTZ & SARGENT SURVEYED THE TOWN LINES JULY, 1851.
JOSUAH HATHAWAY SURVEYED RANGE LINE ON WEST SIDE OF TOWN
JOHN E. DAVIDSON Dep. Surveyor SUBDIVIDED THE TOWN AND MAY 1851.
SET A POST AT THIS CORNER JAN. 9, 1852 ON Pg 54
OF NOTES, BT WH. OAK 18, N 90° W, 51 LINKS AND
ELM 18, S 12° E, 37 LINKS. BOTH GONE.

COUNTY SURVEYOR ALEX RISTOW USED THIS CORNER IN SURVEY VOL. 2, Pg 87, #169 DATED APRIL 28-30, 1908.

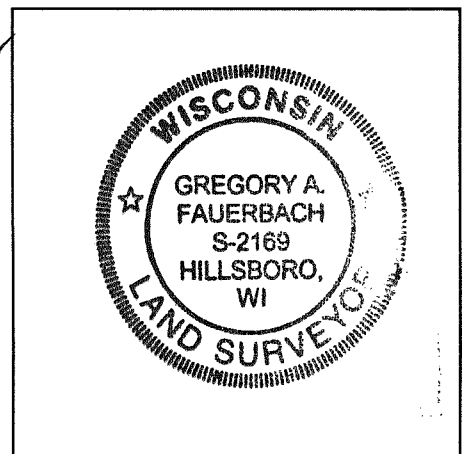
COUNTY SURVEYOR E. J. OLDER CALLED THE CORNER EXISTING IN SURVEY VOL. 2, Pg. 94, #187 DATED OCT. 28-29, 1912.

SURVEYOR PAUL CHAFER USED THIS CORNER IN HEDING REACTY JOB 5-15-86.

SURVEYOR RICH BLAKESLEE USED THIS CORNER IN A PLAT DATED 4-15-96 FOR DON SUMMA AND A CSM DOC. 354063 FOR DON DATED 4-4-96.

AFFIX LAND SURVEYOR SEAL

(I) I, GREG FAUERBACH CERTIFY THAT THE LOCATION SHOWN ON THIS RECORD WAS DETERMINED BY ME OR UNDER MY DIRECTION AND CONTROL AND THAT THIS U.S. PUBLIC LAND SURVEY MONUMENT RECORD IS CORRECT AND COMPLETE TO THE BEST OF MY KNOWLEDGE AND BELIEF.



Greg Fauerbach 4/8/13
SIGNATURE DATE

50213

VERNON COUNTY COORDINATE FORM

"As An Addendum To"

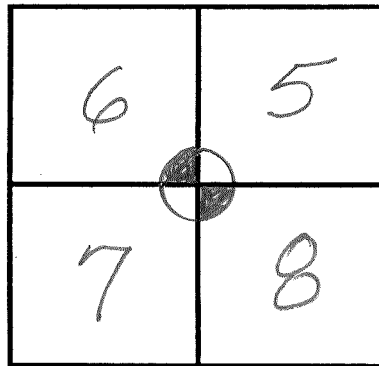
A CERTIFIED U.S. PUBLIC LAND SURVEY MONUMENT RECORD

FAX 637-3823

INSTRUCTIONS: THIS RECORD FORM SHOULD BE USED WHEN COORDINATES ARE PROVIDED FOR A PUBLIC LAND SURVEY CORNER AND SHALL INCLUDE ALL OF THE FOLLOWING ELEMENTS (A-D)

(A) IDENTIFY THE CORNER BY REFERENCE TO THE U.S. PUBLIC LAND SURVEY SYSTEM IN DIAGRAM AT RIGHT

■ = CORNER MONUMENT



T 14 N, R 1 E

(B) COORDINATES:

GEOGRAPHIC (Degrees Minutes Decimal Seconds to 4 places):

LATITUDE: 43-42-42.75187 N

LONGITUDE: 90-24-44.84684 W

ELLIPSOID HT (m):

HORIZONTAL DATUM: NAD 83 (2007)

ORTHOMETRIC HT (U.S. ft): 435

VERTICAL DATUM:

VERNON COUNTY (U.S. FEET)

NORTHING (Y): 206047.21

EASTING (X): 828068.44

Coord. Quality (+/-)

.0111

.0111

DIRECT SHOTS
w/ LEICA NETWORK
ROVER MODEL
GS-09.

METHOD USED TO COMPUTE COORDINATES (check and complete as applicable):

RTK Observations Static Baselines OPUS Solution (attach copy of OPUS report)

Combination of conventional procedures with GPS observations to set temporary control

Was a Least Squares Adjustment Used to Compute Coordinate? Yes/No

For Non-OPUS Based Solutions, List the Control Stations Used for Coordinate Computations (a minimum of 2 different control stations or 2 different time combinations from the same control station are required):

Obs. #	Control Station Name	Station Coordinates (Lat/Long)	Date	Time

* Please List Additional Control Stations Used on Back of Form

When a direct observation of the corner is not possible, and a combination of different GPS and/or conventional procedures must be used to determine coordinate values, provide a brief description of your procedures on the back of form.

(C) REASON FOR COORDINATE SUBMITTAL (check one):

- Being Filed With a New U.S. PLS Monument Record
- To Correct the Coordinates Listed on a Previously Filed PLS Monument Record
- To Provide Coordinates for a Previously Filed PLS Monument Record without Coordinates
- To Provide Supplemental Coordinates for a Previously Filed PLS Monument Record

R.L.S. & DATE OF PLS MONUMENT RECORD:

(D) AGENT(S) PERFORMING GPS OBSERVATIONS & COORDINATE COMPUTATION

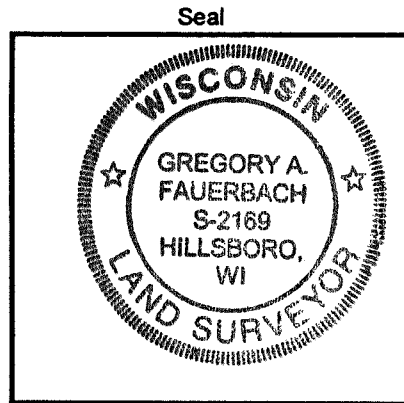
- 1) N/A G.F.
- 2)

I, GREG FAUERBACH

CERTIFY THAT THE COORDINATES PROVIDED ON THIS RECORD WERE DETERMINED BY ME OR UNDER MY DIRECTION AND CONTROL AND THAT THIS COORDINATE SUBMISSION FORM IS CORRECT AND COMPLETE TO THE BEST OF MY KNOWLEDGE AND BELIEF.

Greg Faerber
SIGNATURE

4-8-13
DATE



Mean report for point 306

Use	State	Reference	Date/Time	Posn.diff	Hgt. diff	Posn. + Hgt. diff	Posn. Qlty	Hgt. Qlty
<input checked="" type="checkbox"/>	Automatic	RTCM-Ref 0193	03/22/2013 14:45:43	0.0188	0.0323	0.0373	0.0393	0.0574
<input checked="" type="checkbox"/>	Automatic	RTCM-Ref 0193	03/22/2013 14:45:53	0.0169	0.0161	0.0234	0.0356	0.0519
<input checked="" type="checkbox"/>	Automatic	RTCM-Ref 0193	03/22/2013 14:46:04	0.0135	0.0437	0.0458	0.0400	0.0584
<input checked="" type="checkbox"/>	Automatic	RTCM-Ref 0722	03/26/2013 14:08:34	0.0283	-0.0190	0.0341	0.0399	0.0631
<input checked="" type="checkbox"/>	Automatic	RTCM-Ref 0722	03/26/2013 14:08:46	0.0245	-0.0451	0.0514	0.0382	0.0604
<input checked="" type="checkbox"/>	Automatic	RTCM-Ref 0722	03/26/2013 14:19:21	0.0336	-0.0133	0.0362	0.0303	0.0464
<input checked="" type="checkbox"/>	Automatic	RTCM-Ref 0722	03/26/2013 14:19:54	0.0388	-0.0128	0.0408	0.0327	0.0491

Mean report for point 306

Posn. + Hgt. Qlty	Northing	Easting	Ellip. Hgt.	Ortho. Hgt.	Geoid Sep.
0.0695	206047.1985	828068.4286	131.0305	1135.1705	-1004.1400
0.0629	206047.2085	828068.4248	131.0467	1135.1867	-1004.1400
0.0708	206047.2017	828068.4328	131.0191	1135.1591	-1004.1400
0.0747	206047.2036	828068.4143	131.0818	1135.2218	-1004.1400
0.0715	206047.1928	828068.4263	131.1079	1135.2480	-1004.1400
0.0555	206047.2203	828068.4739	131.0761	1135.2162	-1004.1400
0.0590	206047.2401	828068.4682	131.0756	1135.2157	-1004.1400

DIRECT NETWORK GPS SHOT ON 1/4" O.D.
 PIPE (NODE 306), TO BE REPLACED w/
 VERNON CO. LUNDE MONUMENT UPON
 FROST-OUT.

GF
 3-29-13

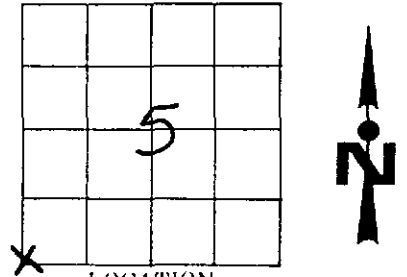
Government Land Corner Certificate

TYPE OF MONUMENT: 1" IRON PIPE (FOUND) ELEVATION -- M.S.L. DATUM: _____
 STATE PLANE COORDINATES: N _____ THETA ANGLE: _____
 Wis. South Zone E _____ FIELD BOOK: _____ PAGE _____

Basis for Monument Location

(Use reverse side if necessary.
 Show info such as: History of corner, with reference to Vol. and page, dates, surveyor; exact description of monument found; if location computed, by taped or EDM traverse; landowner remarks, witnesses, etc.)

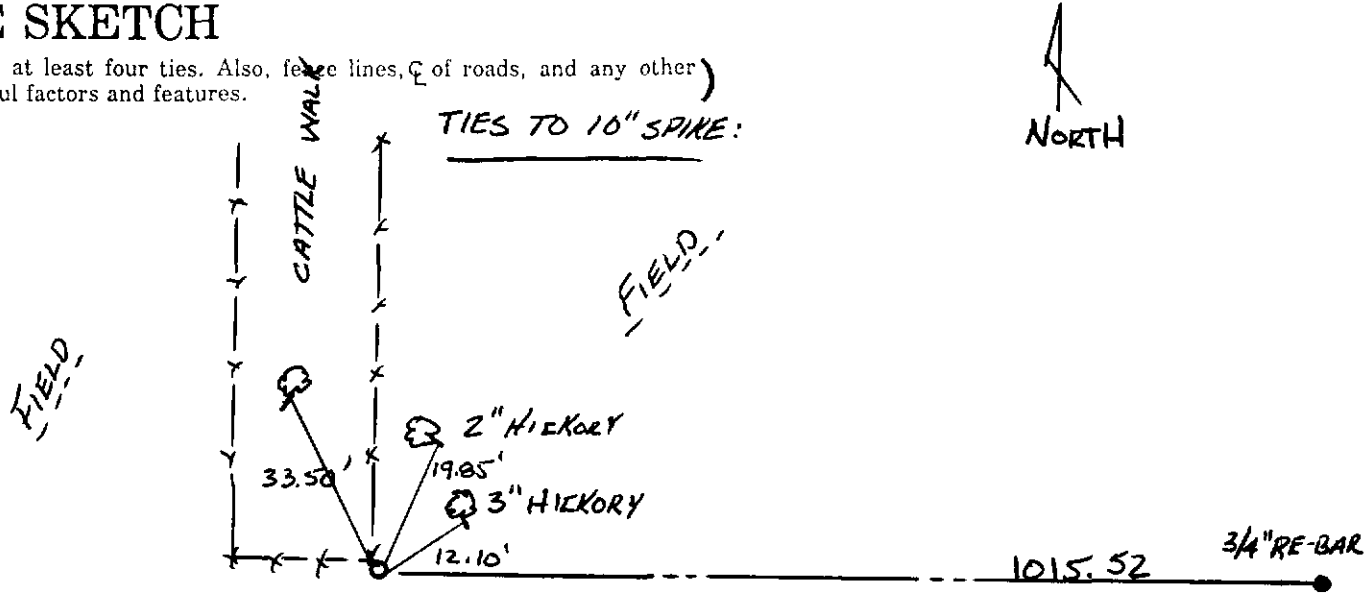
Researched Original Field Notes and all Vernon County Survey Records regarding this corner. We could not find any information of record which could aid us in establishing this corner's perpetuated location. At the occupied fence corner we found a 1" iron pipe which was reported to us by local land owners as being set there many years before by a surveyor. We accepted the position of the 1" iron pipe as the best evidence of this corner's original position.



LOCATION (Indicated by 'X')
 CITY, VILLAGE or TOWN HILLSBORO
 SECTION 5
 TOWN TIAN
 RANGE RIE
 DRAFTED BY BLAKESLEE
 FIELD CREW "

TIE SKETCH

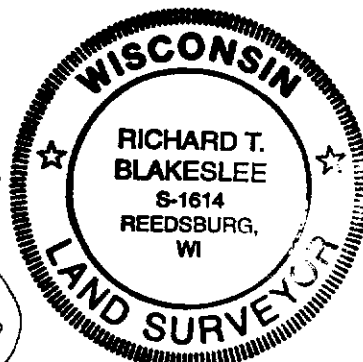
(Show at least four ties. Also, fence lines, C of roads, and any other helpful factors and features.)



CORNER MAINTENANCE INFO

DOWN FENCE

SEAL:



SEAL:
 CERTIFIED CORRECT:
Richard T. Blakeslee
 Registered Land Surveyor
 DATE: 4-29-96

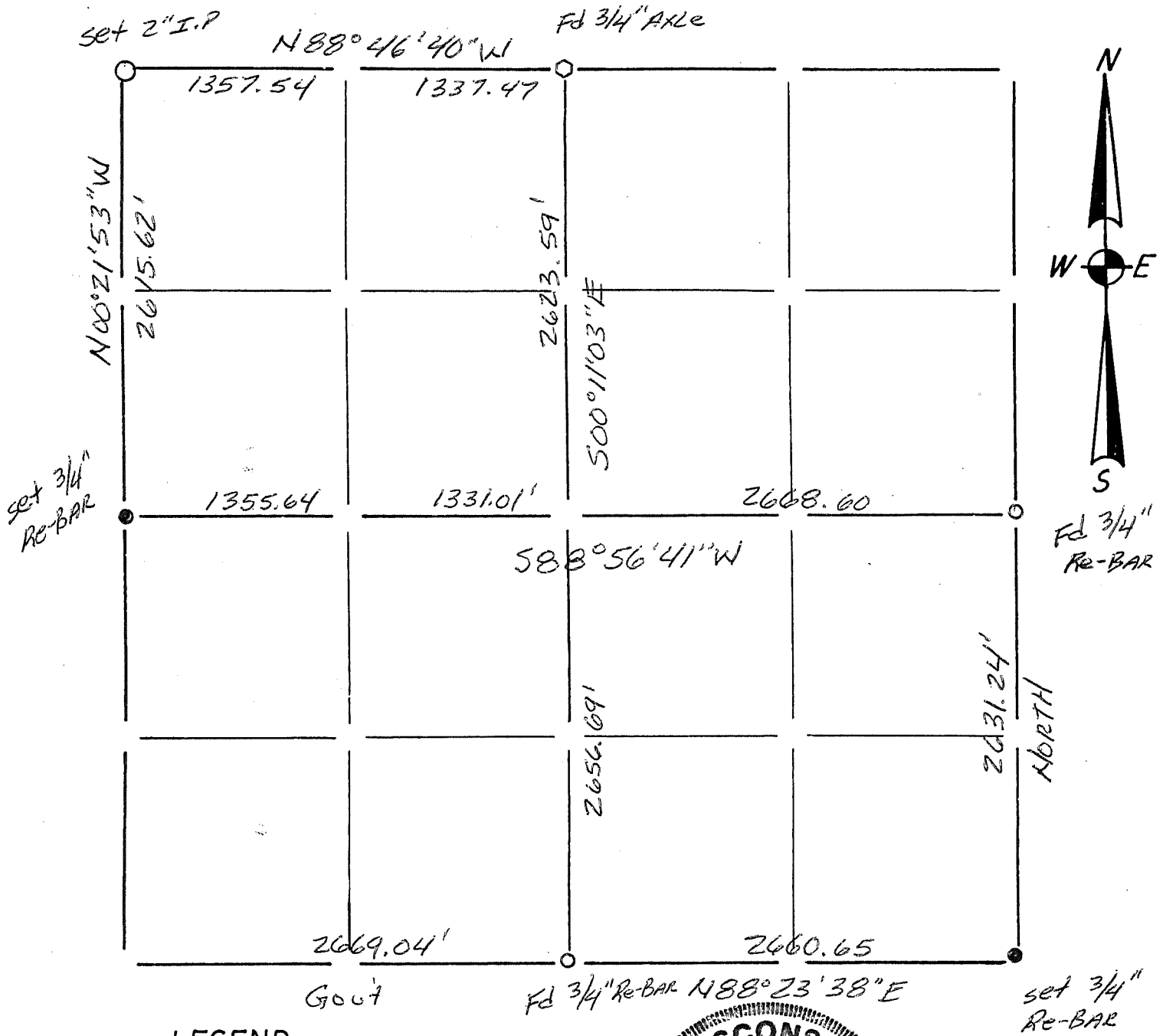
28

For Co. Surveyor Filing Use →

CORNER NO.

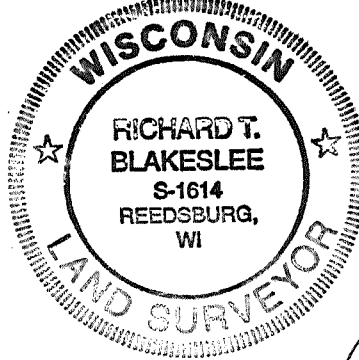
Section Summary and Index

Section 7 - 14 - 1E
Town Range



LEGEND

- ⊕ - Harrison cast iron monument.
- - Stone or concrete monument.
- - Other _____
- _____
- _____
- _____



Richard T. Blakeslee
5/17/99

Summary of Pg. 30-32