

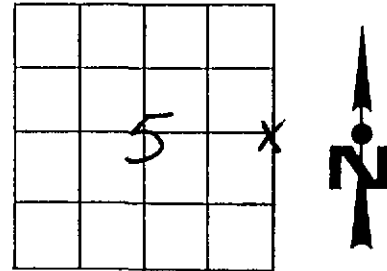
Government Land Corner Certificate

TYPE OF MONUMENT: 1 1/4" x 30" RE-BAR Set ELEVATION — M.S.L. DATUM: _____
 STATE PLANE COORDINATES: N _____ THETA ANGLE: _____
 Wis. South Zone E _____ FIELD BOOK: _____ PAGE _____

Basis for Monument Location

(Use reverse side if necessary.
 Show info such as: History of corner, with reference to Vol. and page, dates, surveyor; exact description of monument found; if location computed, by taped or EDM traverse; landowner remarks, witnesses, etc.)

Researched Original Field Notes and all Vernon County Survey Records regarding this corner. The area where this corner falls has been plowed as a field for years. All evidence such as bearing trees have been destroyed by farming. County Surveyor Kowner found the Original corner in 1888 and used it's position to establish the forty corner to the North as recorded on page 326 of Survey Records. We tied into the occupied forty corner to the North and the Northeast corner of Section 5. We found that our measured distance fit well with Kowner's recorded distance. We used the NE corner and the occupied forty corner to prorate this corner's position.

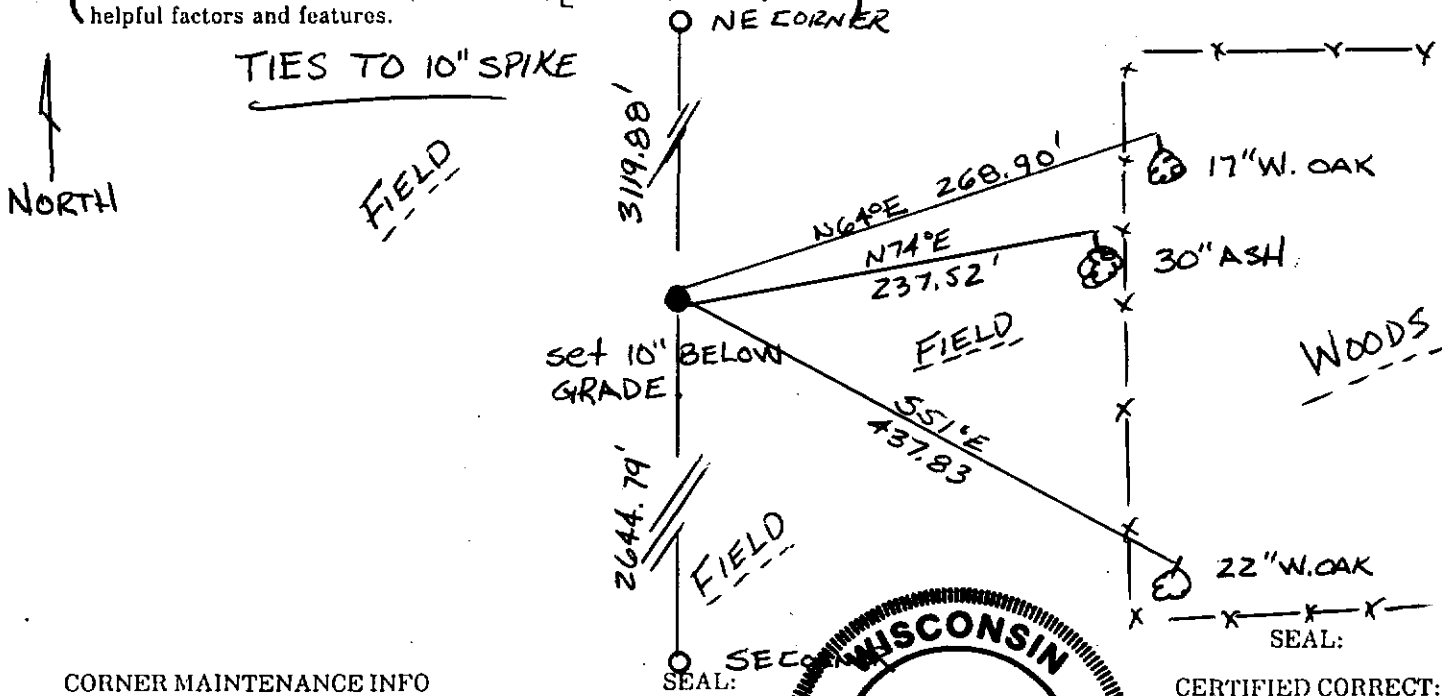


LOCATION
 (Indicated by 'X')

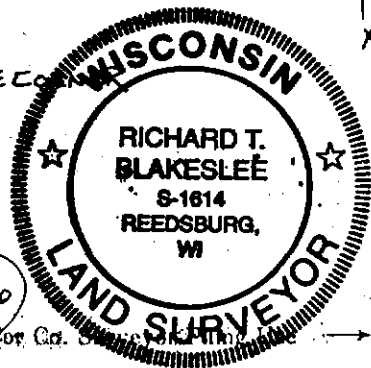
CITY, VILLAGE or TOWNSHIP: HILLS BORO
 SECTION: 5
 TOWN: TIAN
 RANGE: R1E
 DRAFTED BY: BLAKESLEE
 FIELD CREW: "

TIE SKETCH

(Show at least four ties. Also, fence lines, & of roads, and any other helpful factors and features.)



CORNER MAINTENANCE INFO



CERTIFIED CORRECT:

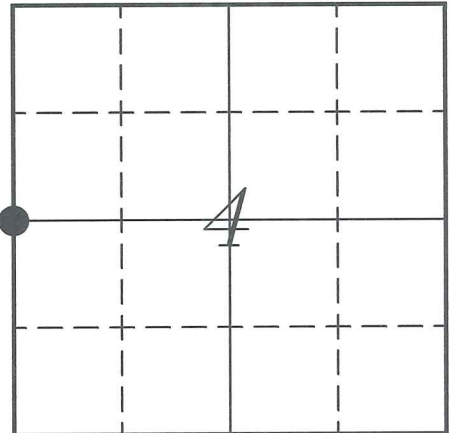
Richard T. Blakeslee
 Registered Land Surveyor
 DATE: 4-26-76
 CORNER NO. _____

VERNON COUNTY COORDINATE SUBMISSION FORM
"As An Addendum To"
VERNON COUNTY
CERTIFIED U.S. PUBLIC LAND SURVEY MONUMENT RECORD

INSTRUCTIONS: THIS RECORD FORM SHOULD BE USED WHEN COORDINATES ARE PROVIDED FOR A PUBLIC LAND SURVEY CORNER AND SHALL INCLUDE ALL OF THE FOLLOWING ELEMENTS (A-D)

(A) IDENTIFY THE CORNER BY REFERENCE TO THE U.S. PUBLIC LAND SURVEY SYSTEM IN DIAGRAM AT RIGHT

● = CORNER MONUMENT



T 14 N, R 1 E

(B) COORDINATES:

GEOGRAPHIC (Degrees Minutes Seconds)

LATITUDE: 43° 43' 09.2924" N

LONGITUDE: 90° 23' 32.3981" W

ELLIPSOID HT (m): _____

DATUM: NAD 1983 (2007)

GEOID03 ADJ: -34.124

ORTHOMETRIC HT: _____

VERNON COUNTY (U.S. FEET)

Coord Quality (+/-)

NORTHING (Y): 208759.083 _____

EASTING (X): 833377.201 _____

GPS METHOD USED TO COMPUTE COORDINATES (check as applicable)

- RTK Observations Static Baselines OPUS-RS Solution OPUS-S Solution
 Combination of GPS Observations & Conventional Procedures

Was a Least Squares Adjustment Used to Compute Coordinates? Yes / No

BASE CONTROL USED FOR COORDINATE COMPUTATION

Station Name	Station Coordinates	Date/Time
<u>GLENDALE SE GPS</u>	<u>43° 44' 23.8696" N 90° 20' 32.2186" W</u>	<u>09/08/2009 - 11:09</u>
	<u>N - 216375.957 E - 846569.776</u>	
<u>GLENDALE SE GPS</u>		<u>09/09/2009 - 10:25</u>

(C) REASON FOR COORDINATES SUBMITTAL (check one)

- Being Filed With a New U.S. PLS Monument Record
 To Correct the Coordinates Listed on a Previously Filed PLS Monument Record
 To Provide Coordinates for Previously Filed PLS Monument Record without Coordinates
 To Provide Supplemental Coordinates for a Previously Filed PLS Monument Record

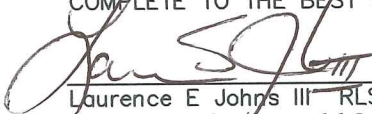
MOST RECENT PLS MONUMENT RECORD DATE:

R.L.S. WHO CREATED MOST RECENT PLS MONUMENT RECORD:

(D) AGENT(S) PERFORMING GPS OBSERVATIONS & COORDINATE COMPUTATION

- 1) LAURENCE E JOHNS III
 2) _____

I, LAURENCE E JOHNS III RLS 2804, REGISTERED LAND SURVEYOR, HEREBY CERTIFY THAT THE COORDINATES PROVIDED ON THIS RECORD WERE DETERMINED BY ME OR UNDER MY DIRECTION AND CONTROL AND THAT THIS COORDINATE SUBMISSION FORM IS CORRECT AND COMPLETE TO THE BEST OF MY KNOWLEDGE AND BELIEF.


 Laurence E Johns III RLS 2804
 Eagle Ridge Surveying, LLC
 PO Box 213
 Wilton, Wisconsin
 9 September 2010

