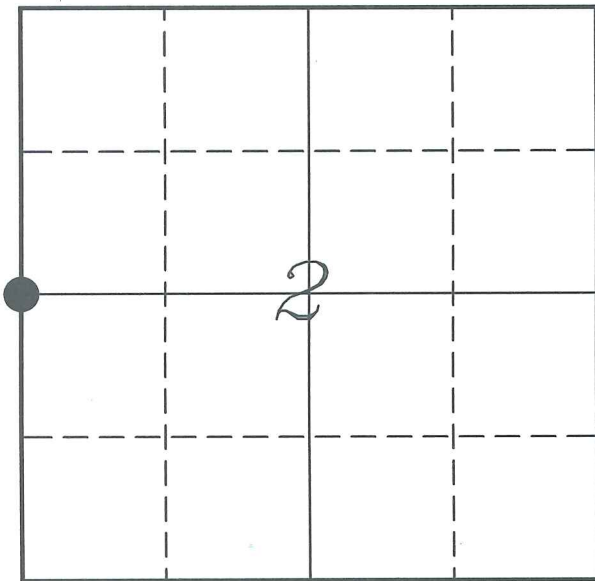


U. S. PUBLIC LAND SURVEY MOUMENT RECORD

**SECTION 2, T14N, R1E, TOWN OF HILLSBORO
VERNON COUNTY, WISCONSIN**



<i>WISCONSIN COORDINATE SYSTEM</i>	
<i>Northing</i>	<i>209103.938</i>
<i>Easting</i>	<i>843956.245</i>
<i>Elevation</i>	
<i>TYPE OF LANDMARK:</i>	
<i>Set 1 1/4" x 18" Iron Rod</i>	
<i>BEARINGS ARE REFERENCED TO:</i>	
<i>Vernon County Coordinates</i>	

LOCATION OF LANDMARK

Crew: Laurence E Johns III
Aaron Anderson

Date: 27 July 2007

Describe any record evidence, monument evidence, testimonial evidence or any other material evidence you considered and whether the monument was found or restored through acceptance of an obliterated evidence location.

The occupational ease/west fence lying east of CTH 'W' matches the prorated split between the NW Corner and the SW Corner.

The east/west fence at the 40 Corner south of this position also matches well.

Accepted the straight line, prorated split as the best available evidence of the original government corner.

Describe or show any material discrepancy between the location of the restored corner and that of the corner previously restored or re-established.

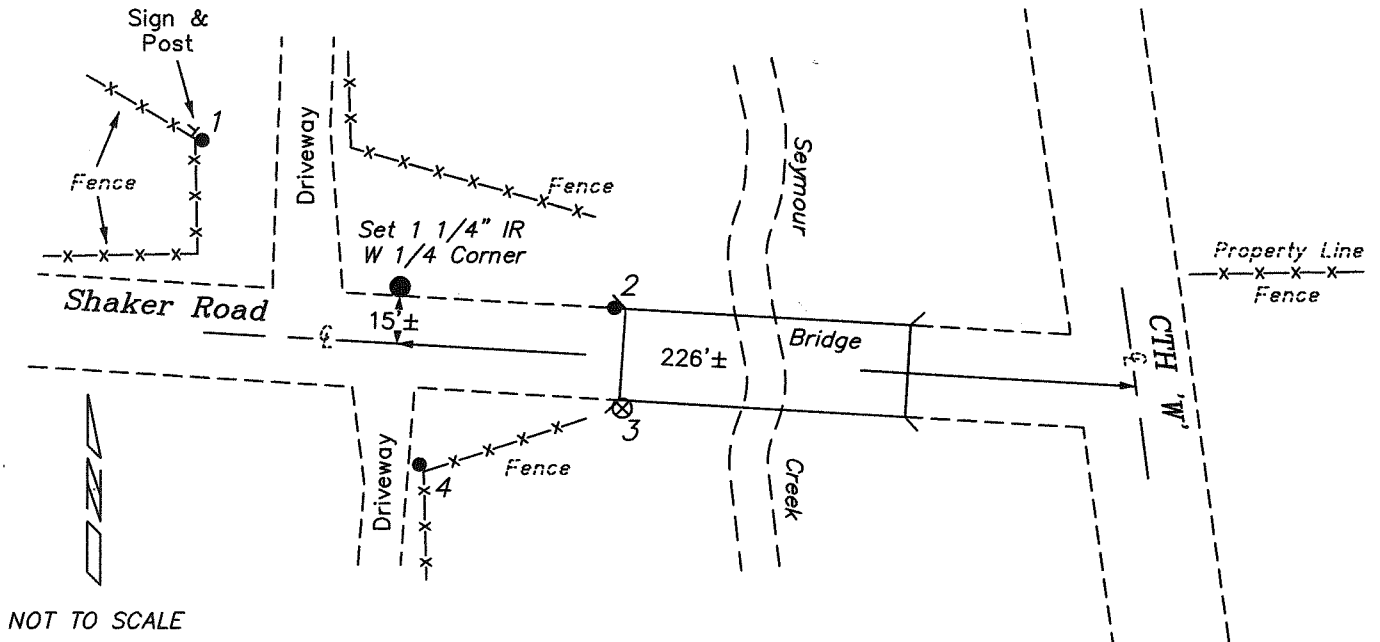
No record of corner being restored since original government survey.

SCANNED

BB

RECORD OF DURABLE WITNESS MONUMENTS

NO	DESCRIPTION	BEARING	DISTANCE
1	Set 3/4" x 18" Irod Rod	N 53°58'32" W	65.83'
2	Set 3/4" x 18" Irod Rod	S 85°00'14" E	57.97'
3	Bench Mark SW Wall of Bridge	S 61°37'17" E	66.23'
4	Set 3/4" x 18" Irod Rod	S 07°12'13" E	49.04'



NOT TO SCALE

PLAN VIEW DRAWING OF REFERENCE TIES

Map Showing Distance And Direction To Other Public Land Survey Corners Used For Re-Establishing The Corner



I, Laurence E Johns III RLS 2804, Registered Land Surveyor, hereby certify that the corner location shown on this record was determined by me or under my direction and control, and that this U.S. Public Land Survey Monument Record is correct and complete to the best of my knowledge and belief.

Laurence E Johns III RLS 2804
Eagle Ridge Surveying
PO Box 213
Wilton, Wisconsin
27 July 2007

