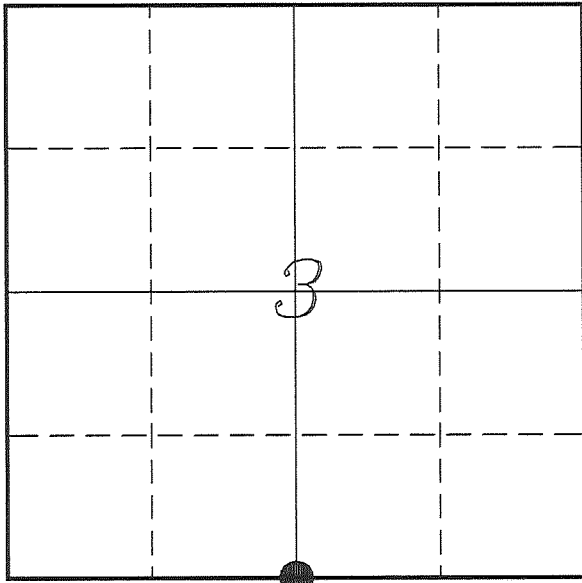

U. S. PUBLIC LAND SURVEY MONUMENT RECORD

**SECTION 3, T14N, R1E, TOWN OF HILLSBORO
VERNON COUNTY, WISCONSIN**


LOCATION OF LANDMARK

Witnesses: Larry Handschy
Al Hoff

Date: 2 August 2017

VERNON COUNTY COORDINATE SYSTEM	
Northing	206340.436
Easting	841328.045
Datum	NAD 1983 (2011)
Elevation	
Datum	
TYPE OF LANDMARK: Set Lunde Monument 4" Brass Capped Iron Pipe	
BEARINGS ARE REFERENCED TO: Vernon County Coordinates (Survey Grade)	

Eagle Ridge Surveying
PO Box 213
Wilton, Wisconsin

Describe any record evidence, monument evidence, testimonial evidence or any other material evidence you considered and whether the monument was found or restored through acceptance of an obliterated evidence location.

No bearing trees of record were located.

Knower's survey was the only record that was found that shows this corner being visited. Knower ran the North/South quarter line during his survey.

The only occupation in this area is a maintained East/West fence. There were fence corner occupation at the '40' corners to the North, South and West. These fence corners when extended met at a location that was 12.5'± East and 6'± North of the mid-point between SE & SW Corners of Section 3.

The distance to the N 1/4 Corner is less than 20' different than measured by Knower. And for a distance of over 6100', that is very acceptable.

I accepted this location as the best possible evidence of the original government corner and place a Lunde Monument on the South side of the fence.

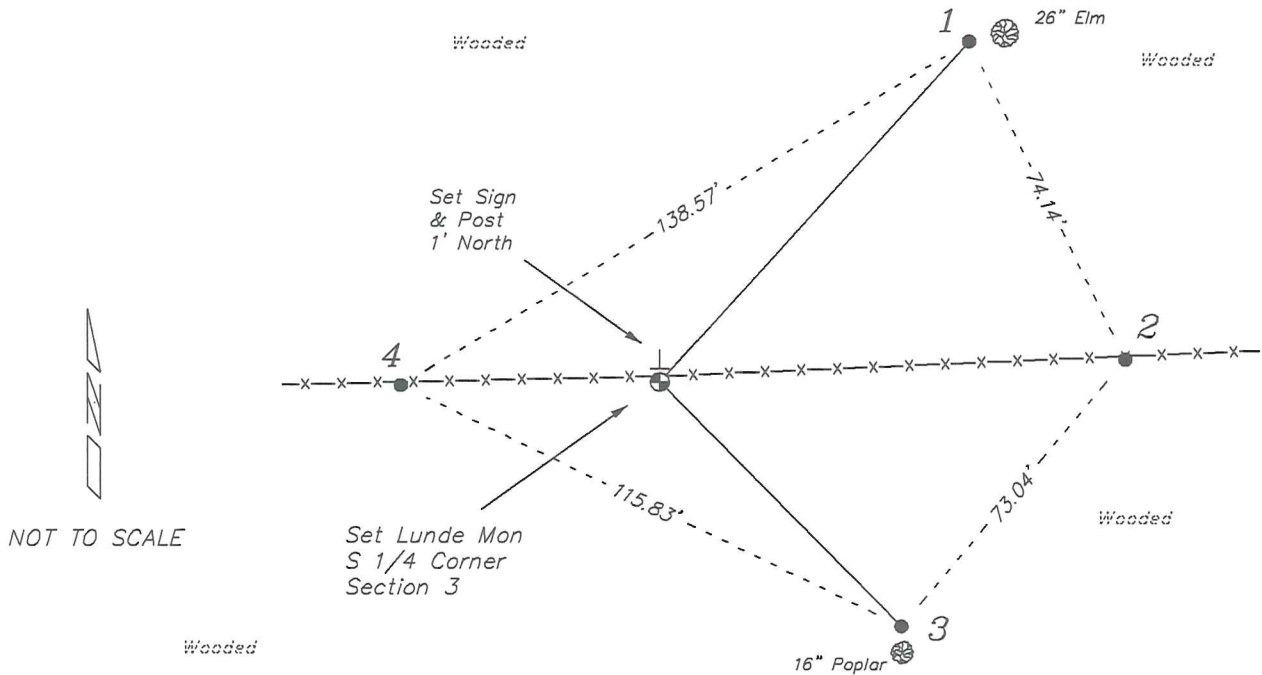
Describe or show any material discrepancy between the location of the restored corner and that of the corner previously restored or re-established.

John E Davidson established this corner in December 1852.

Wm Knower was at this corner, in July 1888, during a survey in Section 3. He shows he found the government corner.

RECORD OF DURABLE WITNESS MONUMENTS

NO	DESCRIPTION	BEARING	DISTANCE
1	Set 3/4" x 18" Iron Rod 1' West of a 26" Elm	N 42°03'19" E	96.23'
2	Set 3/4" x 18" Iron Rod In Fence Line	N 87°10'44" E	97.00'
3	Set 3/4" x 18" Iron Rod 1' North of a 16" Poplar	S 44°19'54" E	71.96'
4	Set 3/4" x 18" Iron Rod In Fence Line	S 89°13'38" W	53.84'



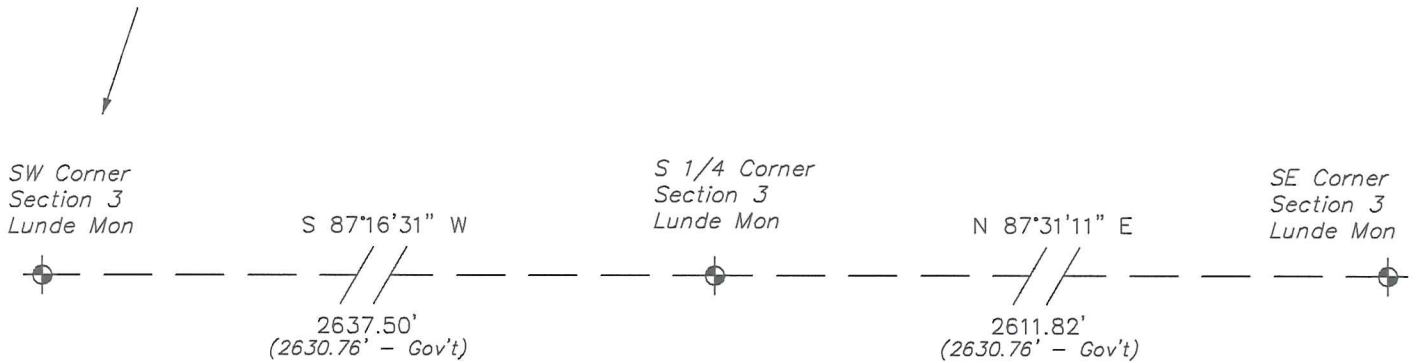
PLAN VIEW DRAWING OF REFERENCE TIES

Map Showing Distance And Direction To Other Public Land Survey Corners Used For Re-Establishing The Corner

Note:

Measurements were not made to this corner at this time.

Bearings and distances shown are based on recorded information and shown for reference.



I, Laurence E Johns III PLS 2804, Professional Land Surveyor, hereby certify that the corner location shown on this record was determined by me or under my direction and control, and that this U.S. Public Land Survey Monument Record is correct and complete to the best of my knowledge and belief.

