

FOR VERNON COUNTY, WISCONSIN

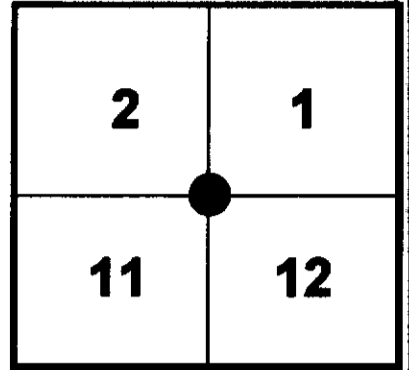
Note: This form is intended and designed to fulfill all requirements of Wisconsin Administrative Code, Chapter AE-7.08, U.S. Public Land Survey Monument Record (3)(a)(b)(c)(d)(e)(f)(g)(h)(i). Use additional sheets if necessary.

(a) The One Quarter corner common to Sections 1, 12

Township(s) 14 North, Range(s) 1 East.

Vernon County Coordinates: N 206570.190

Datum: _____ E 849260.595



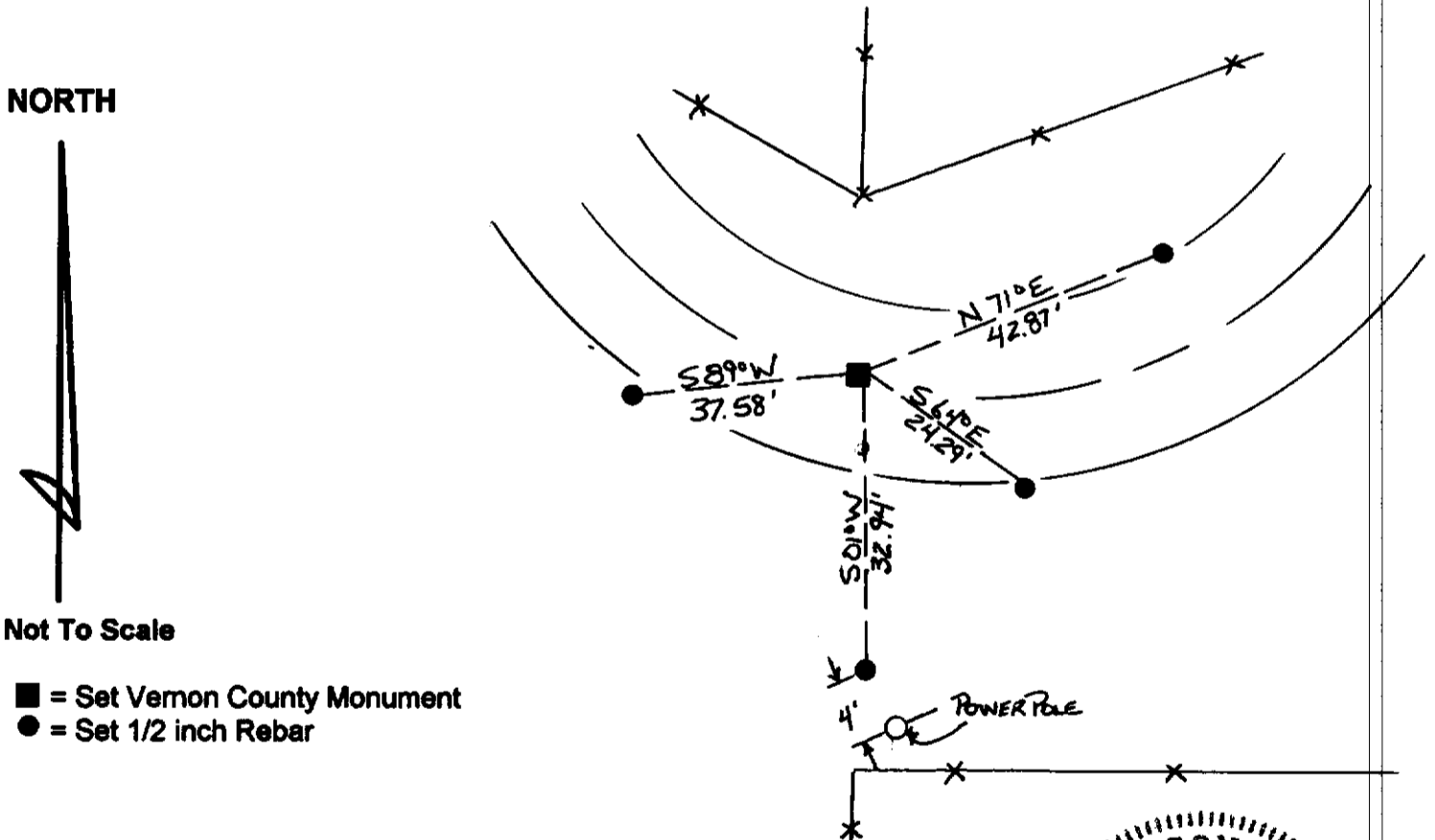
(b)(f)(h) Description of monument found at this corner and if it was accepted, state all evidence (material, testimonial, occupational, plats records, other monuments) used as a basis for accepting. If not accepted or nothing was found, state evidence used as basis for establishing location and what was set. If re-established through lost corner proportionate methods, indicate all monuments, distances and directions used.

1845 J. E. Davidson established original corner location 80.00 chains North of Southwest corner of Section 12.

06-10-1996 - Sean M. Walsh found a railroad spike and accepted it as the true corner location.

11-09-1998 - I found the Railroad spike as set by Walsh and replaced it with a Vernon County Monument and set reference monuments as shown.

(c)(d)(e) Plan view of corner with ties to at least four (4) witness monuments. If in disagreement with previously established corner, show the distances between the two corners and also indicate ties to disputed corner.



Not To Scale

- = Set Vernon County Monument
- = Set 1/2 inch Rebar

(I) Certify that the corner location on this record was determined by me or under my direction and control and that this U.S. Public Land survey Monument Record is correct and complete to the best of my knowledge and belief.

Signature _____ Date 12/22/98



Filed for record in Vernon County Surveyor's Office on _____ INDEX NO. _____

⑧ See next pg. also

JUL 30 1993

GOVERNMENT CORNER RECORD

NE CORNER, SECTION 11, TOWNSHIP 14 NORTH, RANGE 1 EAST - ~~WEST~~
TOWN/CITY/VILLAGE OF Hillsboro

TYPE OF MONUMENT: Railroad Spike Found ELEVATION - M.S.L. DATUM _____

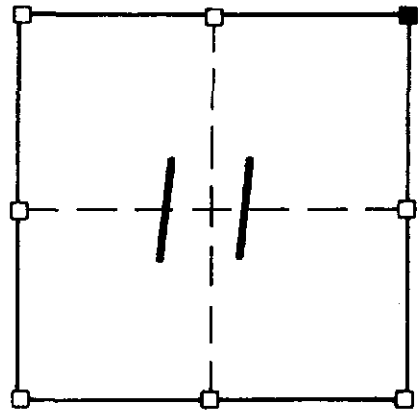
WITNESSES TO CORNER LOCATION

Sean M. Walsh

Jason D. Dobbs

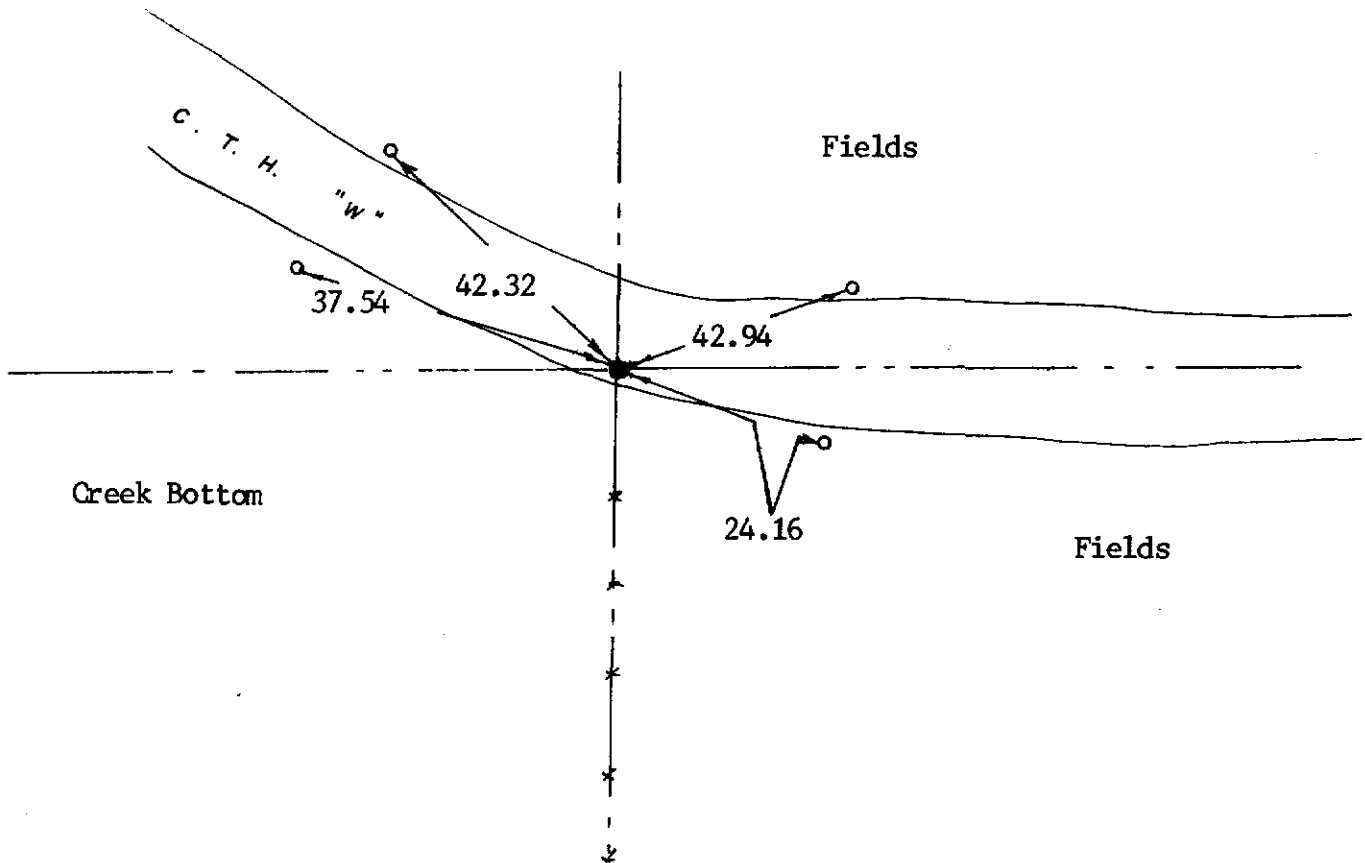
SECTION 11, T 14 N, R 1 ~~EWK~~

TOWN OF Hillsboro



TIE SKETCH
(SHOW ALL HELPFUL FEATURES)

Ties: 3/4" Iron Rods Set



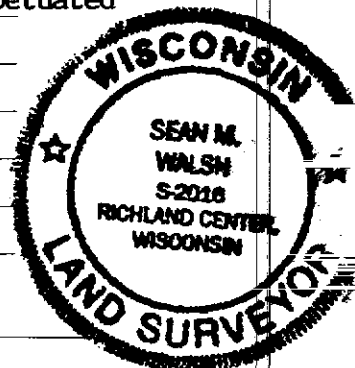
SURVEYOR'S CERTIFICATE

SEAL S- 2016

I, Sean M. Walsh, DO HEREBY CERTIFY THAT I have accepted and perpetuated
this corner as the best available evidence and that this
information is correct and true to the best of my information,
knowledge and belief.

DATED THIS 10 DAY OF JUNE, 19 93

Sean M. Walsh
REGISTERED LAND SURVEYOR



2A