

JUNEAU COUNTY SURVEY MONUMENT RECORD

CORNER NO. 14
SECTION 6
TOWN 14N.
RANGE 2E.

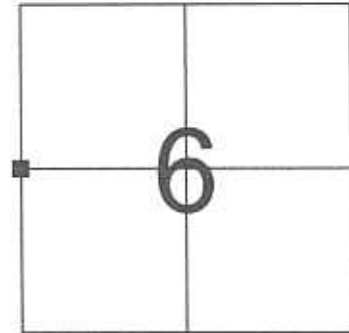
TYPE OF MONUMENT: STANDARD HARRISON MONUMENT

JUNEAU COUNTY COORDINATES
NORTHING: 129,162.35
EASTING: 400,460.13

■ = CORNER MONUMENT RESTORED

BASIS FOR MONUMENT LOCATION
(USE REVERSE SIDE IF NECESSARY)

SHOW INFO SUCH AS: HISTORY OF CORNER, WITH REFERENCE TO VOLUME AND PAGE DATES, SURVEYOR; EXACT DESCRIPTION OF MONUMENT PLACED OR FOUND, IF LOCATION COMPUTED, BY TAPED OR EDM TRAVERSE; LANDOWNER REMARKS, ETC.



LOCATION

HARRISON MONUMENT FOUND AS PER TIE SHEET DATED 12/22/1998 BY CARL SANDSNES.

LEGEND

- = HARRISON MONUMENT FOUND
 - = 3/4" X 24" IRON ROD SET
 - ⊥ = HARROW SPIKE FOUND IN TREE
 - () = PREVIOUSLY RECORDED AS
- AZIMUTHS ARE MAGNETIC

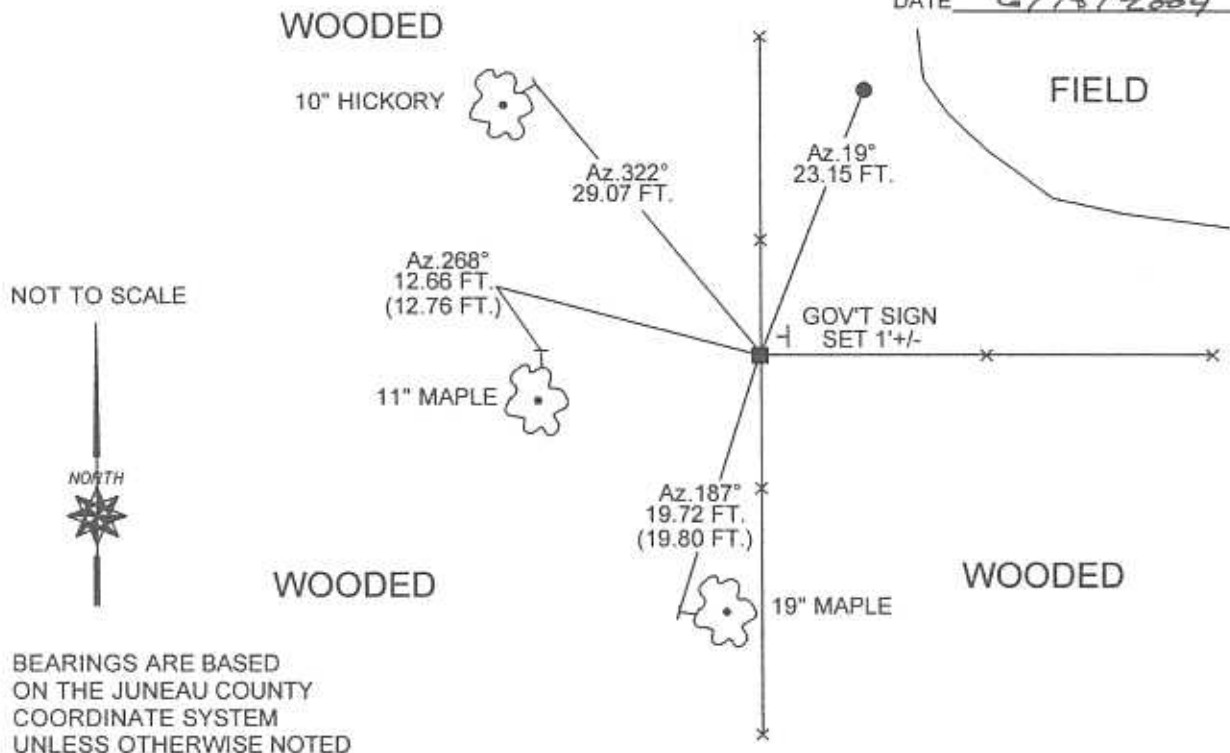


CERTIFIED CORRECT

Patrick J. Dederich
REGISTERED LAND SURVEYOR

DATE 6/18/2004

TIE SKETCH
(SHOW AT LEAST FOUR TIES)



JUNEAU COUNTY

Survey Monument Record

TYPE OF MONUMENT: HARRISON

STATE PLANE COORDINATES: N _____

E _____

ELEVATION — M.S.L. DATUM: _____

THETA ANGLE: _____

FIELD BOOK: _____ PAGE _____

Page (

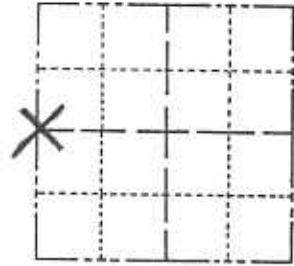
14

CORNER NO. _____

SECTION 6

TOWN 14

RANGE 2E



LOCATION
(Indicated by 'X')

SEAL:



BASIS FOR MONUMENT LOCATION

(Use reverse side if necessary)

Show info such as: History of corner, with reference to Vol. and pg. dates, surveyor; exact description of monument replaced; if location computed, by taped or EDM traverse; landowner remarks, etc.

REPLACED 3/4" ROD

Iron rod found in place at the fence corner set by other Surveyor.

Accepted as the true corner location.

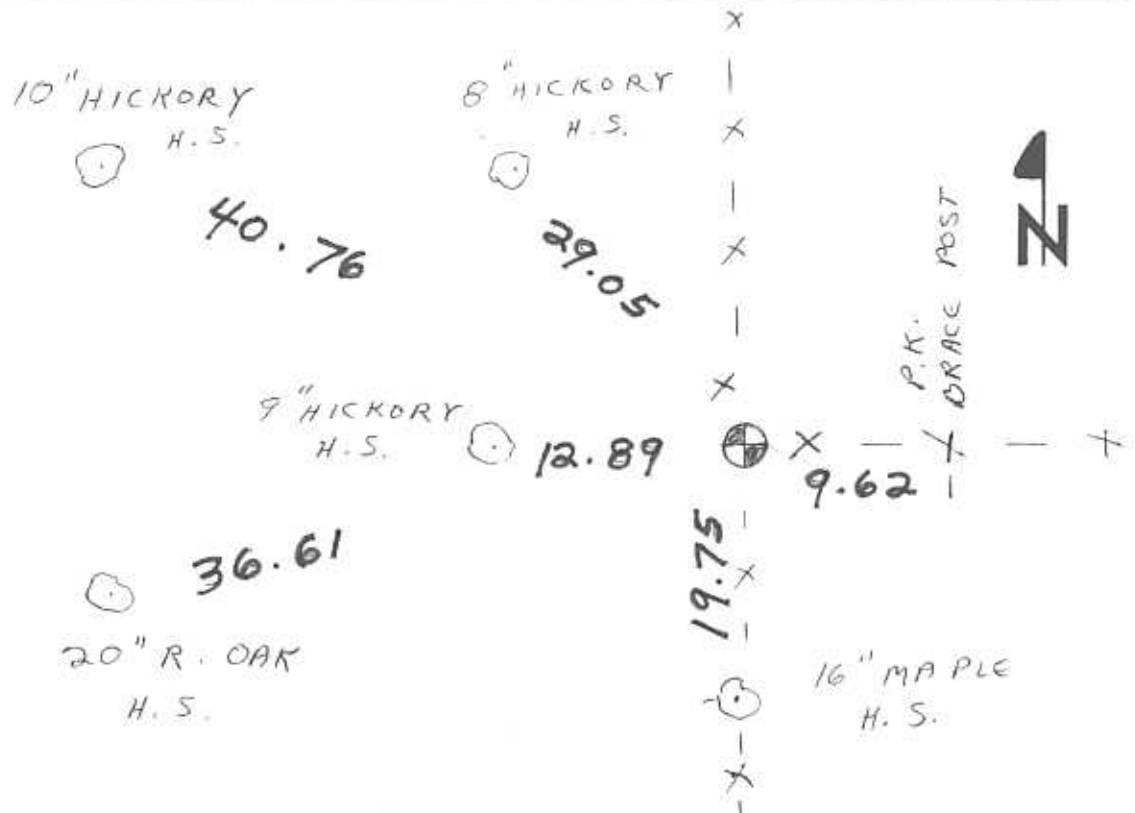
CERTIFIED CORRECT.

James J. Carroll
Registered Land Surveyor

DATE: 5/23/86

TIE SKETCH

(Show at least four ties)



FOR VERNON COUNTY, WISCONSIN

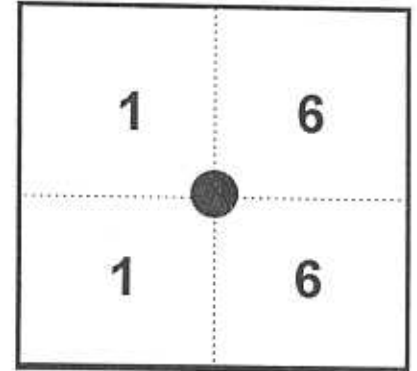
Note: This form is intended and designed to fulfill all requirements of Wisconsin Administrative Code, Chapter AE-7.08, U.S. Public Land Survey Monument Record (3)(a)(b)(c)(d)(e)(f)(g)(h)(i). Use additional sheets if necessary.

(a) The One Quarter corner common to Sections 1,6

Township(s) 14 North, Range(s) 1,2 East.

Vernon County Coordinates: N 209351.412

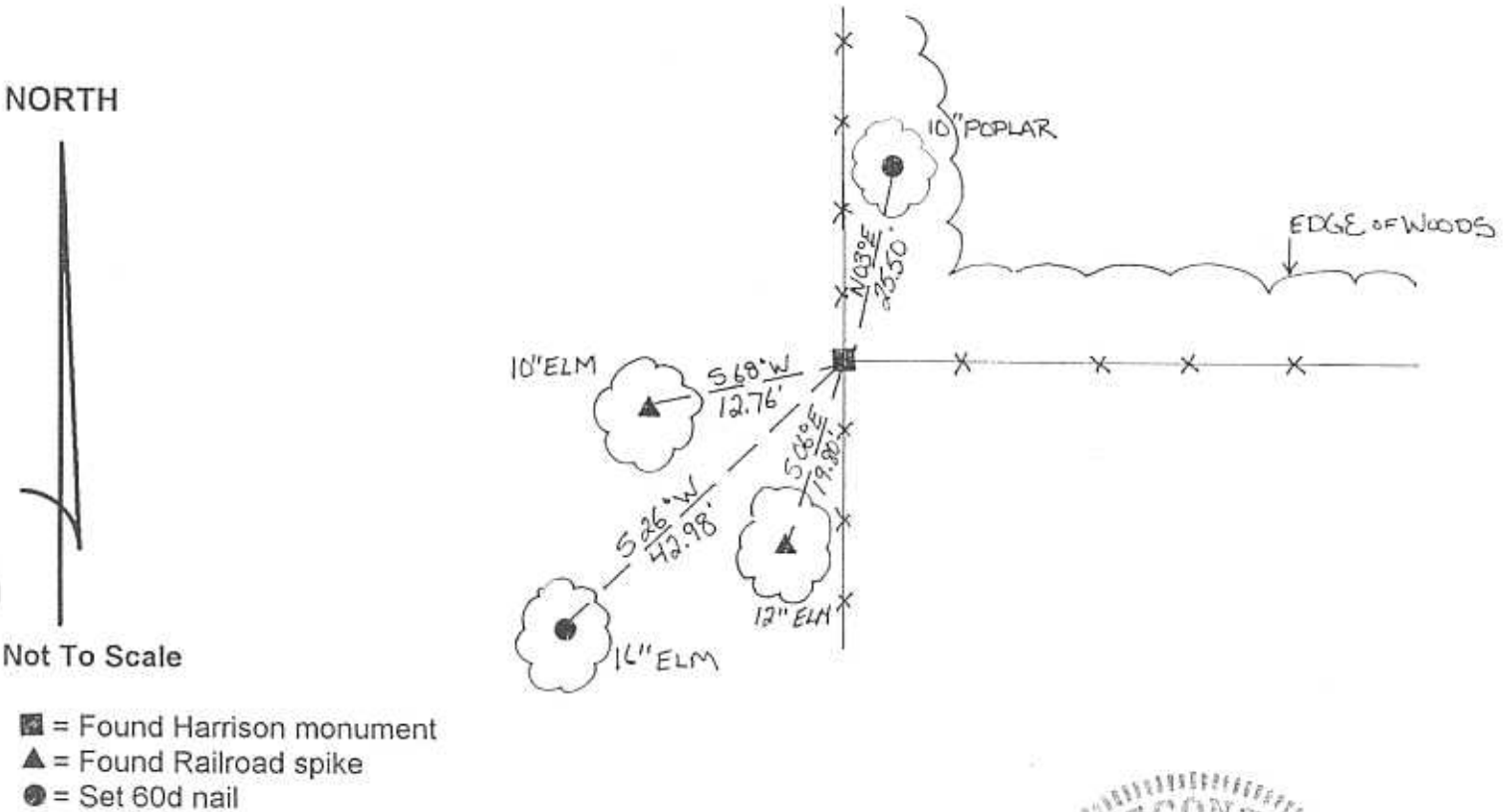
Datum: _____ E 854562.382



(b)(f)(h) Description of monument found at this corner and if it was accepted, state all evidence (material, testimonial, occupational, plats records, other monuments) used as a basis for accepting. If not accepted or nothing was found, state evidence used as basis for establishing location and what was set. If re-established through lost corner proportionate methods, indicate all monuments, distances and directions used.

11-5-98 - I found Harrison Monument at intersection of fence lines with reference monuments and set reference monuments as shown.

(c)(d)(e) Plan view of corner with ties to at least four (4) witness monuments. If in disagreement with previously established corner, show the distances between the two corners and also indicate ties to disputed corner.



(I) Certify that the corner location on this record was determined by me or under my direction and control and that this U.S. Public Land survey Monument Record is correct and complete to the best of my knowledge and belief.



[Signature]
Signature

12/22/98
Date

Filed for record in Vernon County Surveyor's Office on _____ INDEX NO. _____