

FOR VERNON COUNTY, WISCONSIN

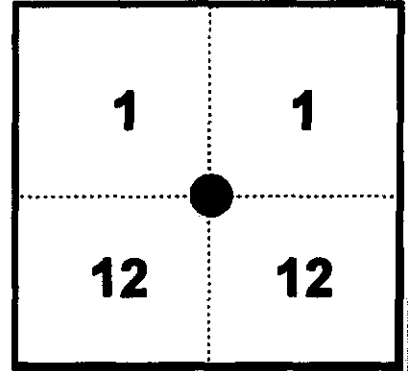
Note: This form is intended and designed to fulfill all requirements of Wisconsin Administrative Code, Chapter AE-7.08, U.S. Public Land Survey Monument Record (3)(a)(b)(c)(d)(e)(f)(g)(h)(i). Use additional sheets if necessary.

(a) The One Quarter corner common to Sections 1.12

Township(s) 14 North, Range(s) 1 East.

~~Vernon Co.~~ Coordinates: N 206643.102

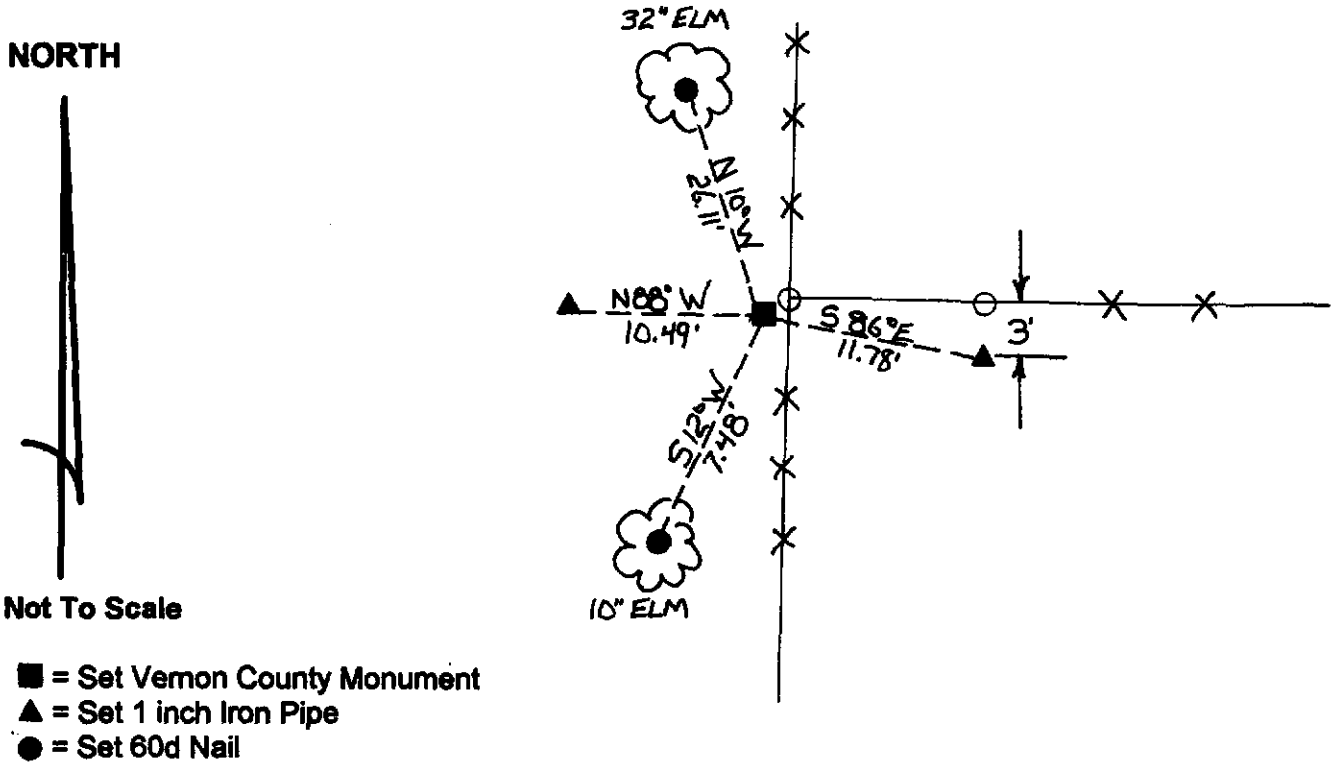
Datum: _____ E 851908.219



(b)(f)(h) Description of monument found at this corner and if it was accepted, state all evidence (material, testimonial, occupational, plats records, other monuments) used as a basis for accepting. If not accepted or nothing was found, state evidence used as basis for establishing location and what was set. If re-established through lost corner proportionate methods, indicate all monuments, distances and directions used.

11-5-98 - I placed Vernon County Monument by holding fence lines North, South, and East and set witness monuments as shown.
Set corner by occupational evidence.

(c)(d)(e) Plan view of corner with ties to at least four (4) witness monuments. If in disagreement with previously established corner, show the distances between the two corners and also indicate ties to disputed corner.



(I) Certify that the corner location on this record was determined by me or under my direction and control and that this U.S. Public Land survey Monument Record is correct and complete to the best of my knowledge and belief.



[Handwritten Signature]
Signature

12/22/98
Date

Filed for record in Vernon County Surveyor's Office on _____ INDEX NO. _____

9