

JUNEAU COUNTY SURVEY MONUMENT RECORD

CORNER NO. 21
SECTION 7
TOWN 14N.
RANGE 2E.

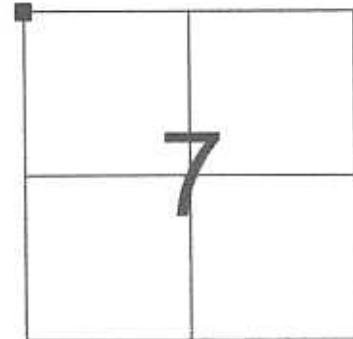
TYPE OF MONUMENT: VERNON COUNTY (LUNDE) MONUMENT

JUNEAU COUNTY COORDINATES
NORTHING: 126,531.49
EASTING: 400,434.22

■ = CORNER MONUMENT RESTORED

BASIS FOR MONUMENT LOCATION
(USE REVERSE SIDE IF NECESSARY)

SHOW INFO SUCH AS: HISTORY OF CORNER, WITH REFERENCE TO VOLUME AND PAGE DATES, SURVEYOR; EXACT DESCRIPTION OF MONUMENT PLACED OR FOUND, IF LOCATION COMPUTED, BY TAPED OR EDM TRAVERSE; LANDOWNER REMARKS, ETC.



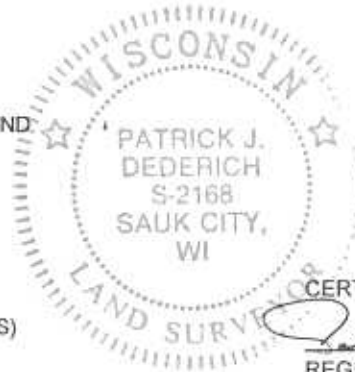
LOCATION

VERNON COUNTY (LUNDE) MONUMENT FOUND AS PER TIE SHEET DATED 12/22/1998 BY CARL SANDSNES.

LEGEND

- = VERNON COUNTY (LUNDE) MONUMENT FOUND
 - = 3/4" X 24" IRON ROD SET
 - = 1 1/4" DIAMETER IRON PIPE FOUND
 - ∅ = 1/2" DIAMETER IRON ROD FOUND
 - () = PREVIOUSLY RECORDED AS
- AZIMUTHS ARE MAGNETIC

TIE SKETCH
(SHOW AT LEAST FOUR TIES)



CERTIFIED CORRECT

REGISTERED LAND SURVEYOR

DATE 6/18/2004

NOT TO SCALE

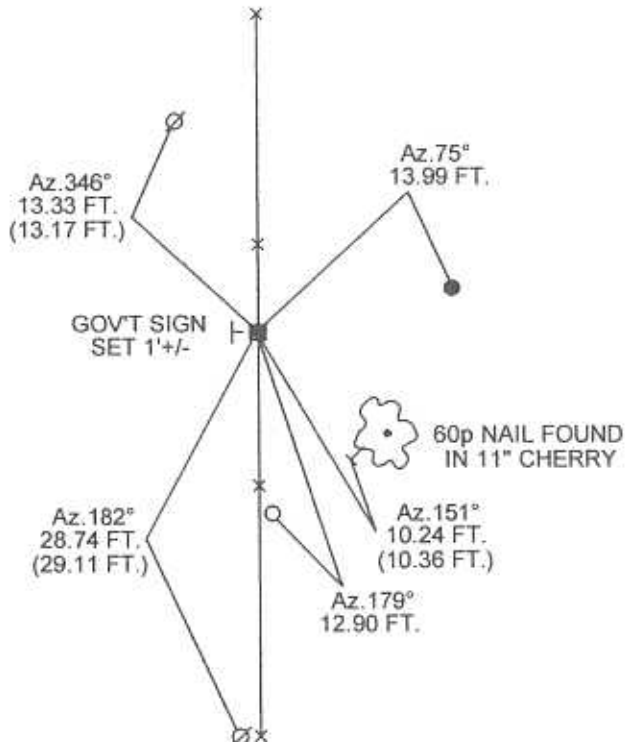


BEARINGS ARE BASED ON THE JUNEAU COUNTY COORDINATE SYSTEM UNLESS OTHERWISE NOTED

PASTURE

PASTURE

PINE PLANTATION



FOR VERNON COUNTY, WISCONSIN

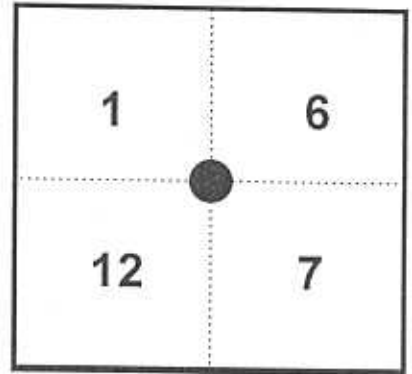
Note: This form is intended and designed to fulfill all requirements of Wisconsin Administrative Code, Chapter AE-7.08, U.S. Public Land Survey Monument Record (3)(a)(b)(c)(d)(e)(f)(g)(h)(i). Use additional sheets if necessary.

(a) The Section corner common to Sections 1,6,7,12

Township(s) 14 North, Range(s) 1,2 East.

Vernon County Coordinates: N 206720.851

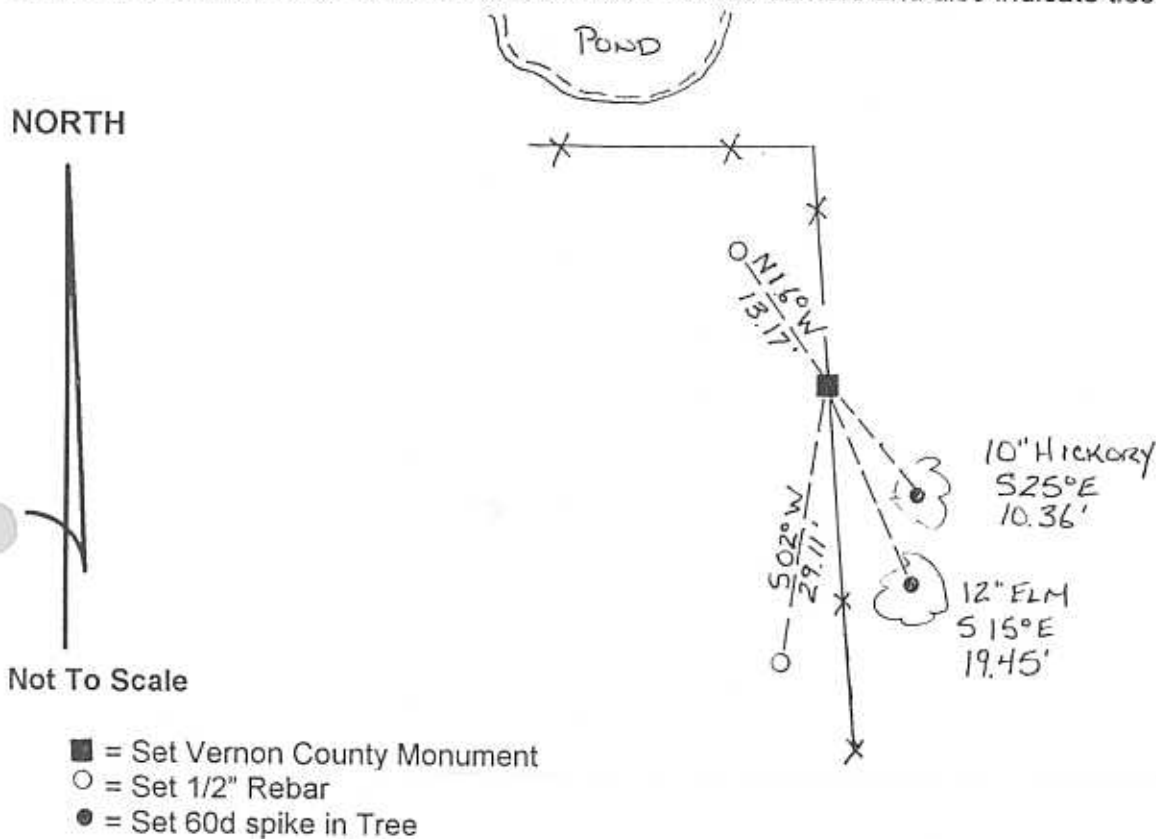
Datum: _____ E 854562.077



(b)(f)(h) Description of monument found at this corner and if it was accepted, state all evidence (material, testimonial, occupational, plats records, other monuments) used as a basis for accepting. If not accepted or nothing was found, state evidence used as basis for establishing location and what was set. If re-established through lost corner proportionate methods, indicate all monuments, distances and directions used.

11-5-98- I placed Vernon County Monument on a straight line intersection between the East 1/4 corners of Sections 1 and 12, set reference monuments as shown.

(c)(d)(e) Plan view of corner with ties to at least four (4) witness monuments. If in disagreement with previously established corner, show the distances between the two corners and also indicate ties to disputed corner.



(l) Certify that the corner location on this record was determined by me or under my direction and control and that this U.S. Public Land survey Monument Record is correct and complete to the best of my knowledge and belief.

[Signature]
Signature

12/22/98
Date

