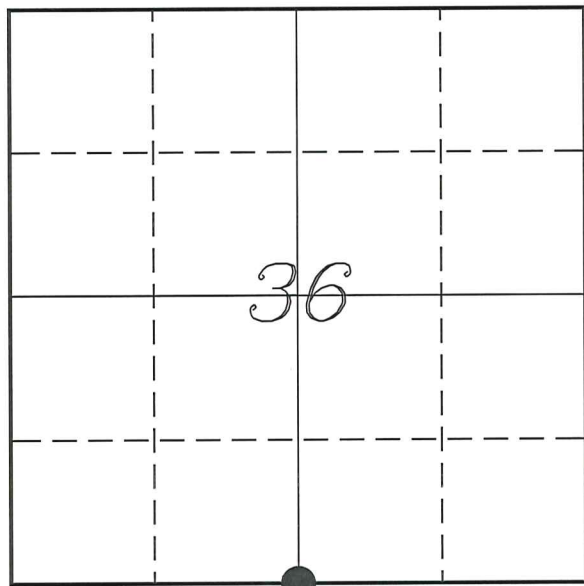


U. S. PUBLIC LAND SURVEY MONUMENT RECORD

*SECTION 36, T13N, R5W, TOWN OF JEFFERSON
VERNON COUNTY, WISCONSIN*



LOCATION OF LANDMARK

<i>VERNON COUNTY COORDINATE SYSTEM</i>	
<i>Northing</i>	<i>147887.416</i>
<i>Easting</i>	<i>693931.069</i>
<i>Datum</i>	<i>NAD 1983 (2011)</i>
<i>Elevation</i>	
<i>Datum</i>	
<i>TYPE OF LANDMARK:</i>	
<i>Existing 1 1/4" Iron Rod</i>	
<i>BEARINGS ARE REFERENCED TO:</i>	
<i>Vernon County Coordinates (Survey Grade)</i>	

Witnesses: Laurence E Johns III

Date: 12 June 2021

Describe or show any material discrepancy between the location of the restored corner and that of the corner previously restored or re-established.

Henry Maddin established this corner in December 1846.

Wm Knower was at this corner, in July 1882, during a survey in Section 36 and in November 1883, during a survey in Section 1. He shows he set a stone by agreement of the landowners.

Matthew Filus was at this corner, in January 1999. He shows he set a 2 1/2" masonry nail and prepared a tie sheet.

Curtis Cummer was at this corner, in June 2005. He shows he found a railroad spike and accepted it as the corner and prepared a tie sheet.

Curtis Cummer was at this corner again, in August 2006, during a survey in Section 36. He shows he found a railroad spike.

Robert Lampman was at this corner, in June 2007, during a survey in Section 36. He shows he found a railroad spike.

Steve Alt was at this corner, in May 2016, during a survey in Section 1. He shows he found a railroad spike.

Laurence Johns was at this corner, in November 2016, after reconstruction of CTH 'XX'. I placed an 1 1/4" iron rod at the previous location of the railroad spike.

Describe any record evidence, monument evidence, testimonial evidence or any other material evidence you considered and whether the monument was found or restored through acceptance of an obliterated evidence location.

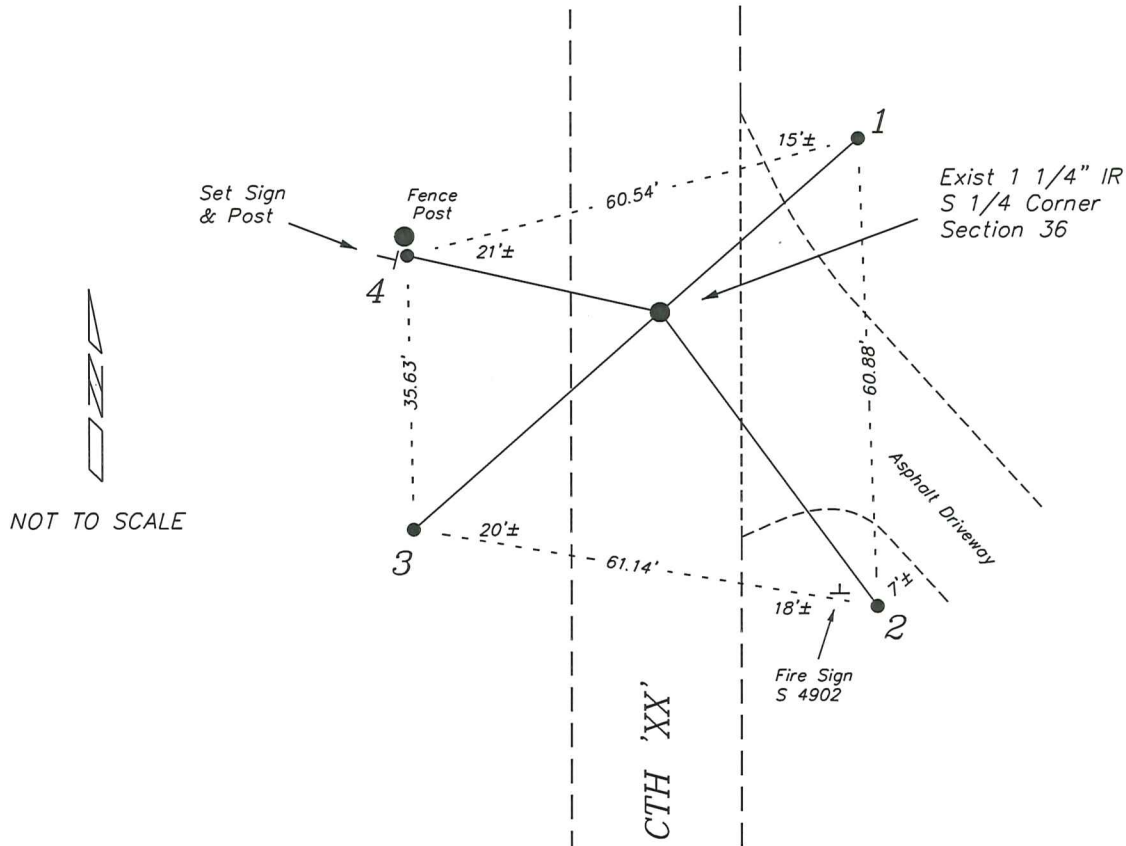
No bearing trees of record were located.

I found no tie sheet on file from 2016 in which I had reset the corner after road reconstruction work of CTH 'XX'.

I verified that the 1 1/4" iron rod was still in place and measured the existing ties. The sign had been destroyed by grass mowing and I replaced it with a new one.

RECORD OF DURABLE WITNESS MONUMENTS

NO	DESCRIPTION	BEARING	DISTANCE
1	Existing 3/4" Iron Rod	(N 51° E) N 48°48'53" E	34.25' (34.68')
2	Existing 3/4" Iron Rod 3' East of Fire Address sign	(S 35° E) S 36°25'15" E	47.56' (47.56')
3	Existing 3/4" Iron Rod	(S 49° W) S 48°41'54" W	42.67' (42.75')
4	Existing 3/4" Iron Rod South Side of Wood Fence Post	(N 76° W) N 77°13'08" W	33.68' (32.64')

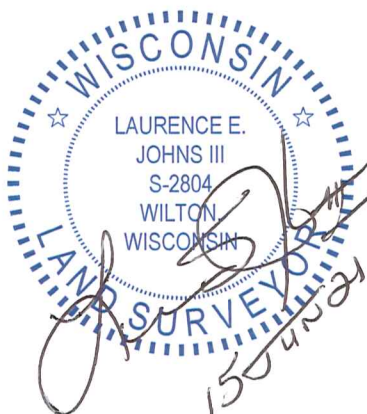


PLAN VIEW DRAWING OF REFERENCE TIES

Map Showing Distance And Direction To Other Public Land Survey
Corners Used For Re-Establishing The Corner

None

I, Laurence E Johns III PLS 2804, Professional Land Surveyor, hereby certify that the corner location shown on this record was determined by me or under my direction and control, and that this U.S. Public Land Survey Monument Record is correct and complete to the best of my knowledge and belief.



Vernon County Certified U.S. Public Land Survey Monument Record

INSTRUCTIONS: THIS RECORD SHALL SHOW THE LOCATION OF THE CORNER AND SHALL INCLUDE ALL OF THE FOLLOWING ELEMENTS (A-I)

(A) IDENTIFY THE CORNER BY REFERENCE TO THE U.S. PUBLIC LAND SURVEY SYSTEM

■ = CORNER MONUMENT RESTORED

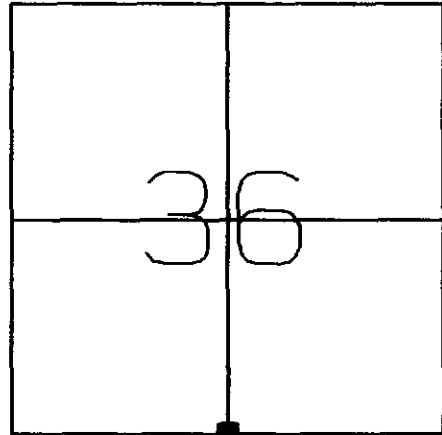
WITNESSES TO CORNER LOCATION:

- 1) Kenny Reinhart
- 2) Neil Baldwin
- 3) Chad Crook

STATE PLANE COORDINATES (WISCONSIN SOUTH ZONE)

NORTHING:
EASTING:

VERNON COUNTY COORDINATES
NORTHING: 147,887.04
EASTING: 693,930.94



SECTION 36, TOWN 13 NORTH, RANGE 5 WEST
Jefferson Township

(B) DESCRIBE ANY RECORD EVIDENCE, MONUMENT EVIDENCE, OCCUPATIONAL EVIDENCE, TESTIMONIAL EVIDENCE OR ANY OTHER MATERIAL EVIDENCE YOU CONSIDERED, AND WHETHER THE MONUMENT WAS FOUND OR PLACED.

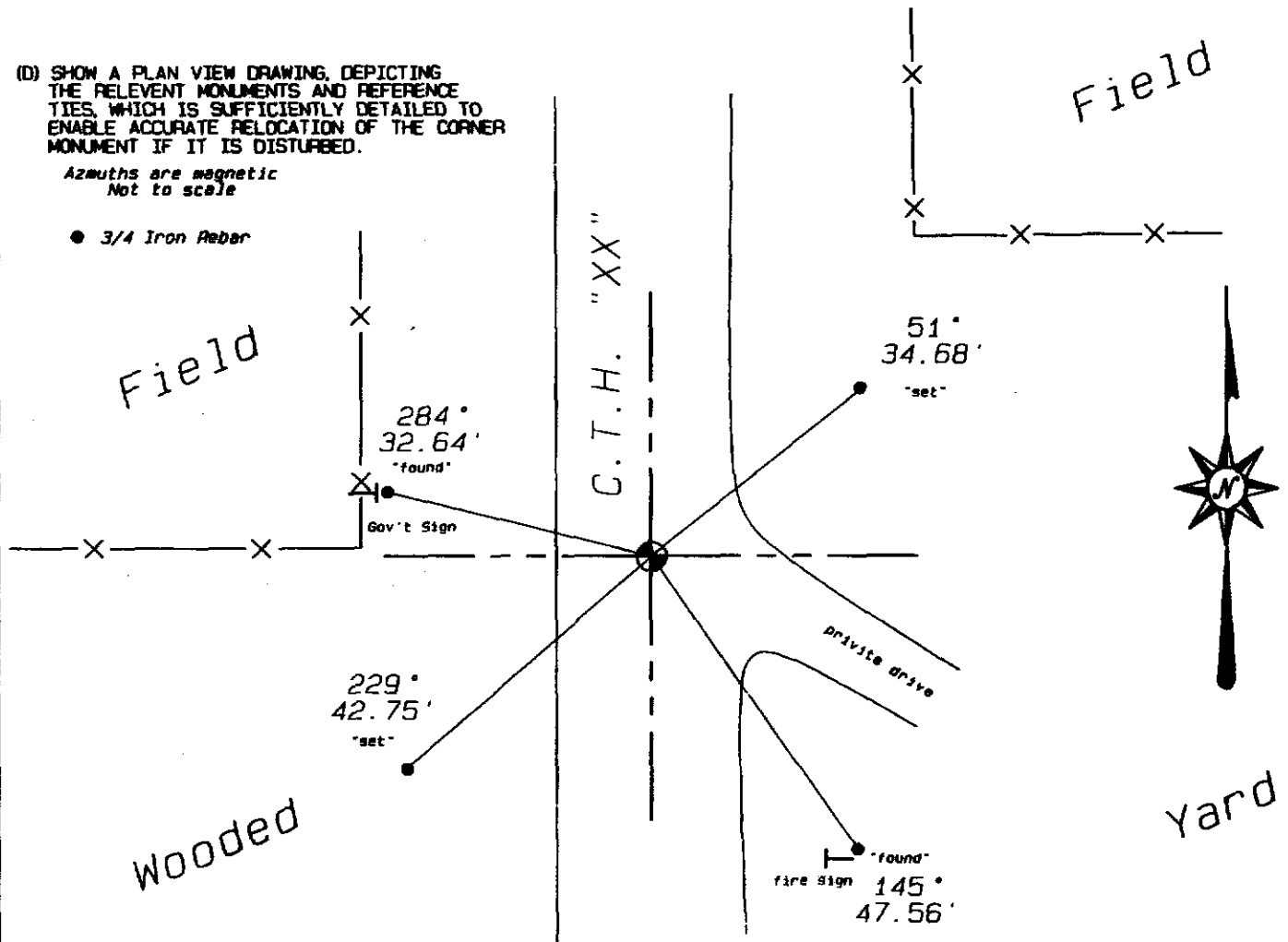
Matthew Filus set a 2 1/2" Masonary Nail here as called out in his Tie Sheet done in 1999. No evidence of nail was found. A Railroad spike was found at said location matching the ties done by Filus. The Railroad Spike was accepted as corner location.

(C) IN THE PLAN VIEW DRAWING BELOW, PROVIDE REFERENCE TIES TO AT LEAST 4 WITNESS MONUMENTS OR, IF THE LOCATION IS WITHIN A MUNICIPALITY, TO AT LEAST 2 WITNESS MONUMENTS. (WITNESS MONUMENTS SHALL BE MADE OF CONCRETE, NATURAL STONE, IRON, OR OTHER EQUALLY DURABLE MATERIAL.) DESCRIBE WITNESS MONUMENTS.

(D) SHOW A PLAN VIEW DRAWING, DEPICTING THE RELEVANT MONUMENTS AND REFERENCE TIES, WHICH IS SUFFICIENTLY DETAILED TO ENABLE ACCURATE RELOCATION OF THE CORNER MONUMENT IF IT IS DISTURBED.

Azimuths are magnetic
Not to scale

● 3/4 Iron Rebar



(E) DESCRIBE ANY MATERIAL DISCREPANCY BETWEEN THE LOCATION OF THE CORNER AS RESTORED OR REESTABLISHED AND THE LOCATION OF THAT CORNER AS PREVIOUSLY RESTORED OR REESTABLISHED BY DISTANCE AND DIRECTION. SHOW THE DISCREPANCY ON THE PLAN VIEW DRAWING UNDER (D), ABOVE. SHOW THE DISTANCES BETWEEN THE CORNER AS PREVIOUSLY RESTORED OR REESTABLISHED AND (1) THE CORNER AS RESTORED OR REESTABLISHED, AND (2) TO AT LEAST 2 OF THE WITNESS MONUMENTS AS SHOWN ON THE DRAWING IN (D), ABOVE.

(NA)

(F) WAS THE CORNER RESTORED THROUGH ACCEPTANCE OF (1) AN OBLITERATED EVIDENCE LOCATION, OR (2) A FOUND PERPETUATED LOCATION?

(2)

(G & H) WAS THE CORNER REESTABLISHED THROUGH LOST CORNER PROPORTIONATE METHODS? IF SO SHOW THE METHOD, INCLUDING THE DIRECTION AND DISTANCES TO THE OTHER PUBLIC LAND SURVEY CORNERS USED AS EVIDENCE OR USED FOR PROPORTIONING IN DETERMINING THE CORNER LOCATION.

(NA)

(I) I, Curtis J. Cummer, CERTIFY THAT THE LOCATION SHOWN ON THIS RECORD WAS DETERMINED BY ME OR UNDER MY DIRECTION AND CONTROL AND THAT THIS U.S. PUBLIC LAND SURVEY MONUMENT RECORD IS CORRECT AND COMPLETE TO THE BEST OF MY KNOWLEDGE AND BELIEF.

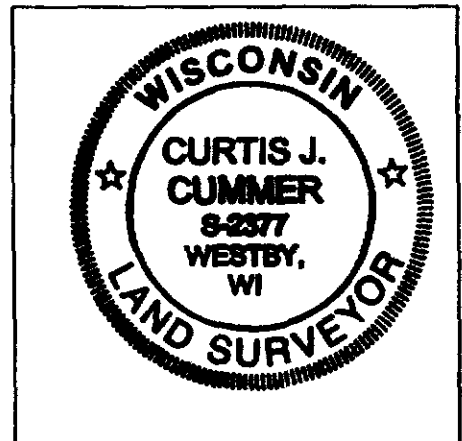


SIGNATURE

6/8/85

DATE

LAND SURVEYOR SEAL



TYPE OF MONUMENT: 2 1/2" LONG MASONRY NAIL

ELEVATION M.S.L. DATUM: _____

COUNTY COORDINATES: N _____

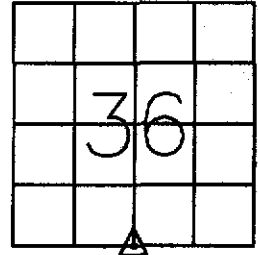
THETA ANGLE: _____

E _____

FIELD BOOK: S-33 PAGE: 22

Basis for Monument Location

(Use reverse side if necessary
Show info such as: History of corner, with reference to Vol. and page, dates, surveyor; exact description of monument found; if location computed, by taped or EDM traverse; landowner remarks, witnesses, etc.)



LOCATION
(Indicated by 'X')

NO ORIGINAL BLM EVIDENCE REMAINS.

NO EVIDENCE OF OCTOBER 28, 1882 SURVEY BY WM H KNOWER REMAINS.

DUE TO AREA OF CUT FROM ROAD CONSTRUCTION AND LOCATION OF CULVERT, THIS CORNER WAS CONSIDERED OBLITERATED AND WAS POSITIONED BY INTERSECTING AN ANCIENT FENCELINE ALONG THE SOUTH LINE OF SECTION 36 WITH THE CENTERLINE OF C.T.H. "XX".

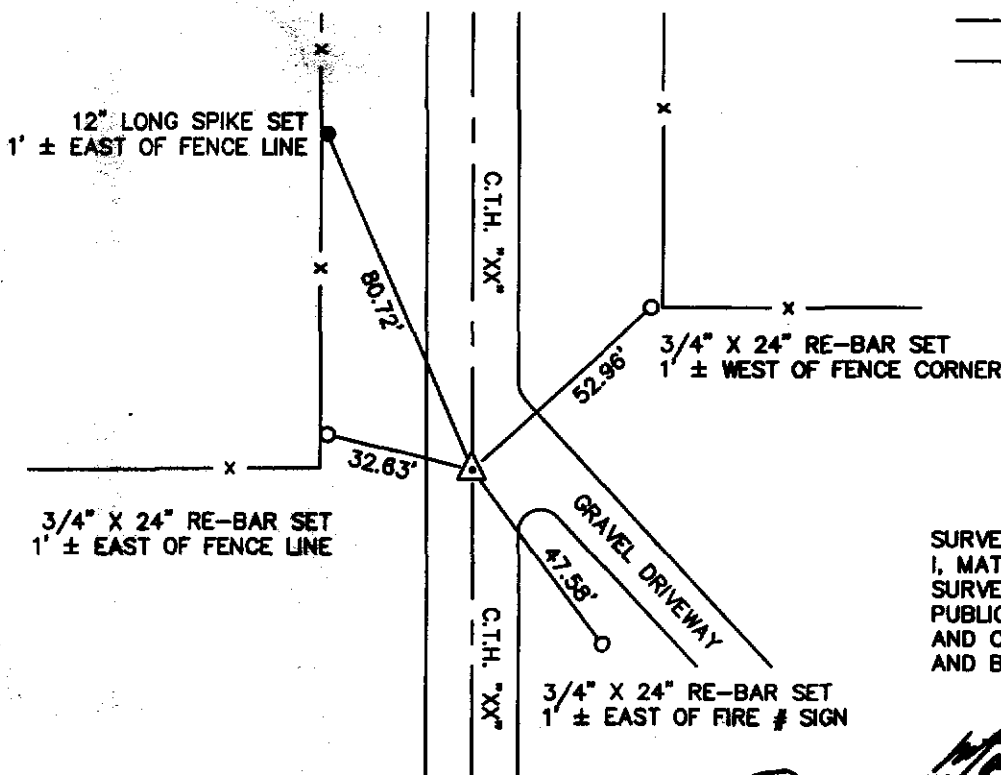
THE RESULTANT POSITION FITS THE OCCUPIED NORTH-SOUTH 1/4 LINE AND DIMENSIONS FROM THE 1882 SURVEY BY WM H KNOWER, COUNTY SURVEYOR, VERY WELL.

MONUMENTED THE CORNER WITH A 2 1/2" LONG MASONRY NAIL DUE TO CULVERT LOCATION AND WITNESSED AS SHOWN BELOW.

CITY, VILLAGE OR TOWN JEFFERSON
SECTION 36
TOWN 13 NORTH
RANGE 5 WEST
DRAFTED BY MM FILUS
FIELD CREW MM FILUS RH KURZ

TIE SKETCH

(Show at least four ties. Also, fence lines, center line of roads and any other helpful features.)



CORNER MAINTENANCE INFO



SURVEYORS' CERTIFICATE:
I, MATTHEW M FILUS, WISCONSIN REGISTERED LAND SURVEYOR #2185, HEREBY CERTIFY THAT THIS U.S. PUBLIC LAND SURVEY MONUMENT RECORD IS TRUE AND CORRECT TO THE BEST OF MY KNOWLEDGE AND BELIEF.

Matthew M. Filus
VERBICHER ASSOCIATES, INC. DATE JANUARY 6, 1999
MATTHEW M. FILUS, RLS #2185

43