

VERNON COUNTY CERTIFIED U.S. PUBLIC LAND SURVEY MONUMENT RECORD

INSTRUCTIONS: THIS RECORD SHALL SHOW THE LOCATION OF THE CORNER AND SHALL INCLUDE ALL OF THE FOLLOWING ELEMENTS (A-I)

(A) IDENTIFY THE CORNER BY REFERENCE TO THE U.S. PUBLIC LAND SURVEY SYSTEM

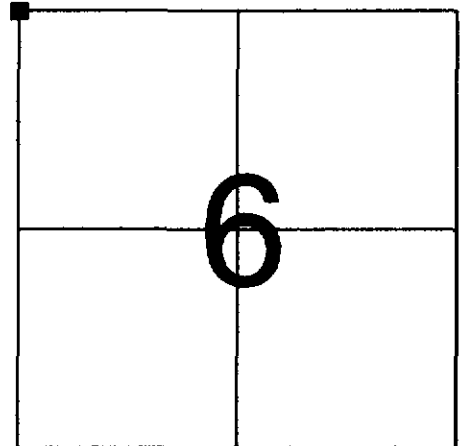
■ = CORNER MONUMENT RESTORED

WITNESSES TO CORNER LOCATION:

- 1) PATRICK J. DEDERICH
- 2) GREGG D. BATZER

VERNON COUNTY COORDINATES

NORTHING: 147,894.87
EASTING: 696,553.20



SECTION 6, TOWN 12 NORTH, RANGE 4 WEST

(B) DESCRIBE ANY RECORD EVIDENCE, MONUMENT EVIDENCE, OCCUPATIONAL EVIDENCE, TESTIMONIAL EVIDENCE OR ANY OTHER MATERIAL EVIDENCE YOU CONSIDERED, AND WHETHER THE MONUMENT WAS FOUND OR PLACED.

TOWN LINE ESTABLISHED BY J.E. WITCHER IN 1844.

IN 1988, RONALD HAYDEN FOUND REMAINS OF A STONE AT THIS CORNER AND SET A 3/4" DIA. IRON ROD.

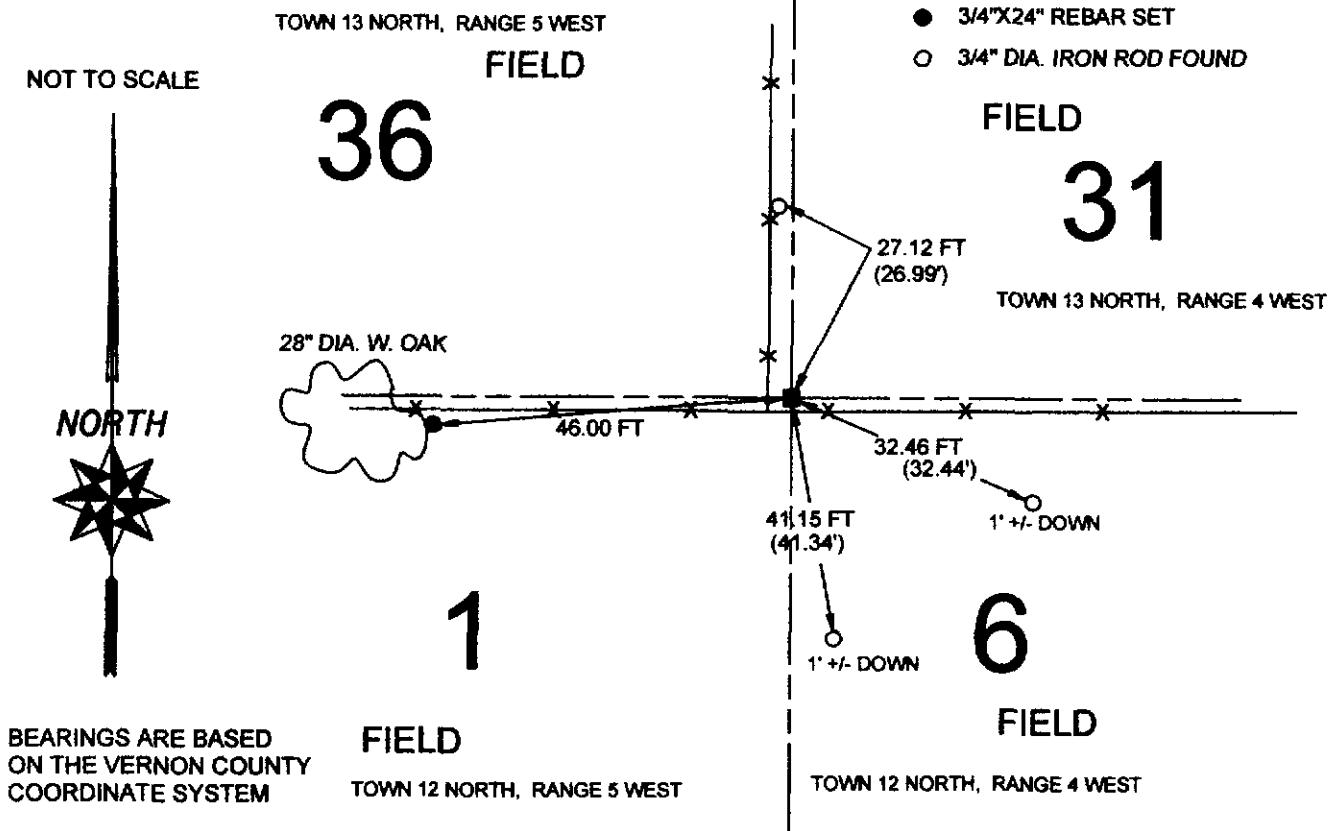
WE FOUND THAT IRON ROD AND, AS IT MEASURED WELL TO OTHER CORNERS ALONG THE TOWNSHIP LINES, REPLACED IT WITH A LUNDE MONUMENT.

(C) IN THE PLAN VIEW DRAWING BELOW, PROVIDE REFERENCE TIES TO AT LEAST 4 WITNESS MONUMENTS OR, IF THE LOCATION IS WITHIN A MUNICIPALITY, TO AT LEAST 2 WITNESS MONUMENTS. (WITNESS MONUMENTS SHALL BE MADE OF CONCRETE, NATURAL STONE, IRON, OR OTHER EQUALLY DURABLE MATERIAL.) DESCRIBE WITNESS MONUMENTS.

(D) SHOW A PLAN VIEW DRAWING, DEPICTING THE RELEVANT MONUMENTS AND REFERENCE TIES, WHICH IS SUFFICIENTLY DETAILED TO ENABLE ACCURATE RELOCATION OF THE CORNER MONUMENT IF IT IS DISTURBED.

LEDGEND

- ⊥ 2" CHANNEL POST W/GOV'T SIGN SET AT FENCE INTERSECTION
- 3/4"X24" REBAR SET
- 3/4" DIA. IRON ROD FOUND



(E) DESCRIBE ANY MATERIAL DISCREPANCY BETWEEN THE LOCATION OF THE CORNER AS RESTORED OR REESTABLISHED AND THE LOCATION OF THAT CORNER AS PREVIOUSLY RESTORED OR REESTABLISHED BY DISTANCE AND DIRECTION. SHOW THE DISCREPANCY ON THE PLAN VIEW DRAWING UNDER (D), ABOVE. SHOW THE DISTANCES BETWEEN THE CORNER AS PREVIOUSLY RESTORED OR REESTABLISHED AND (1) THE CORNER AS RESTORED OR REESTABLISHED, AND (2) TO AT LEAST 2 OF THE WITNESS MONUMENTS AS SHOWN ON THE DRAWING IN (D), ABOVE.

(F) WAS THE CORNER RESTORED THROUGH ACCEPTANCE OF (1) AN OBLITERATED EVIDENCE LOCATION, OR (2) A FOUND PERPETUATED LOCATION?

A FOUND, PERPETUATED LOCATION.

(G & H) WAS THE CORNER REESTABLISHED THROUGH LOST CORNER PROPORTIONATE METHODS? IF SO SHOW THE METHOD, INCLUDING THE DIRECTIONS AND DISTANCES TO OTHER PUBLIC LAND SURVEY CORNERS USED AS EVIDENCE OR USED FOR PROPORTIONING IN DETERMINING THE CORNER LOCATION.

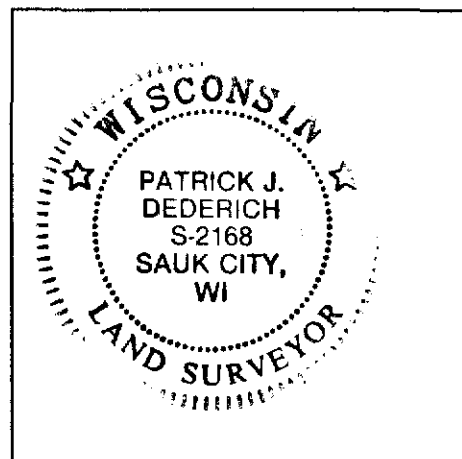
NO.

AFFIX LAND SURVEYOR SEAL

(I) I, PATRICK J. DEDERICH CERTIFY THAT THE LOCATION SHOWN ON THIS RECORD WAS DETERMINED BY ME OR UNDER MY DIRECTION AND CONTROL AND THAT THIS U.S. PUBLIC LAND SURVEY MONUMENT RECORD IS CORRECT AND COMPLETE TO THE BEST OF MY KNOWLEDGE AND BELIEF.


SIGNATURE

11/17/2000
DATE



CERTIFIED LAND CORNER

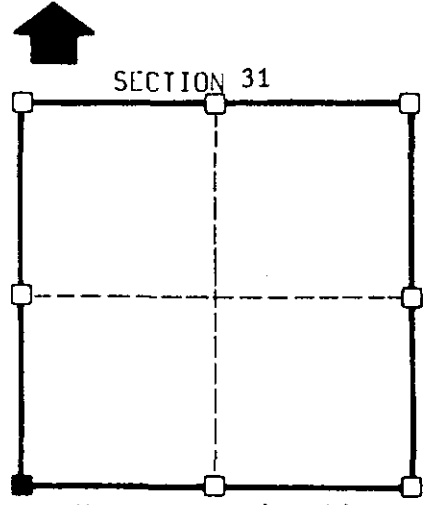
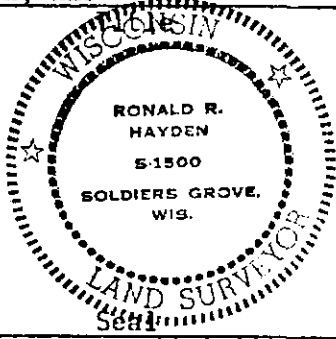
STATE OF WISCONSIN)
 COUNTY OF VERNON) S.S.

CERTIFICATE

I, Ronald R. Hayden, do hereby certify that on the 12 day of August 1988, I found (evidence) ~~(xxxxxx)~~ of the SW corner of Section 31, T13 N, R 4 W, Fourth Principal Meridian, and I re-established said corner according to the Wisconsin Statutes as shown and described hereon.

Dated this 16 day of August 1988

Ronald R. Hayden
 Ronald R. Hayden, RLS



■ = corner location
 T 13 N R 4 W
 Town of: Viroqua

History of original corner establishment:

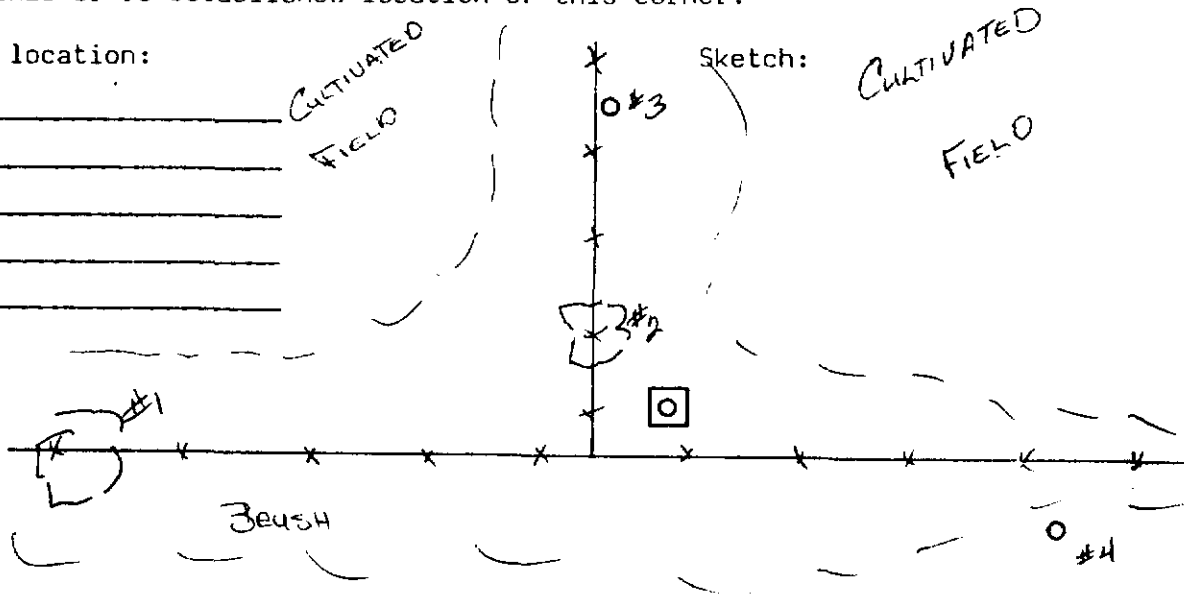
- Town lines established by whitcher in 1844.
- Subdivision by Dixon in 1845.
- Corner remonumented by county surveyors.

Description of corner evidence found: Found stone set by Knower 3.5' east and 1.4' north of the fence line. Top of stone had been broken, but did find small pieces of it. Found the base to be 0.8' north and south, and 1.0' east and west. When excavating for the stone we hit a very old fence line 1' below the surface and the original topsoil about 3' down. Excavated area was 11' (E&W) 12' (N&S) 4' deep. Set 3/4" X 30" iron bar on top of stone with mound.

Description of corner and witness monuments, references and accessories used to perpetuate the original or re-established location of this corner:

Witnesses to corner location:

- Ronald R. Hayden
- Robbie R. Hayden
- Steven E. Hayden
- Tom Henry
- Ken Johnson



(See back for witness descriptions)

LEVEL CONTROL ORDER

horizontal
vertical

WISCONSIN COORDINATE SYSTEM				
Corner	East (X)	North (Y)	Elevation (Z)	Zone
Control Sta. Name				

WITNESS DESCRIPTIONS

1. White oak being 2.0' in diameter with a spike set in the southeast side.
Witness bears: S 82° W 48.45'.
2. Black cherry being 6" in diameter with a spike set in the east side.
Witness bears: N 35° W 4.40'.
3. Drove 3/4" X 30" iron bar for witness and bears: N 08° W 26.99'.
4. Drove a 3/4" X 30" iron bar for witness and bears S 74° E 32.44'.
5. Drove a 3/4" X 30" iron bar for witness and bears S 7° E 41.34'.

Note: 4 and 5 were set and buried over 1 foot deep in a cultivated field.